



Mareeba Shire Council
P.O. Box 154
65 Rankin Street
Mareeba Qld 4880

Telephone (07) 4030 3900
Facsimile (07) 4092 3323
Email ceo@msc.qld.gov.au
Web www.msc.qld.gov.au

Integrated Planning Act 1997

Mareeba Shire Council

Planning Scheme Amendment No. 1 of 2007

Adopted

Mareeba Shire Council adopted this planning scheme amendment on 20 November 2007.

Commencement

This planning scheme amendment took effect on 23 November 2007.

Planning Scheme Amendment - Waste Management Facilities

The Planning Scheme for Mareeba Shire is amended in the following manner:

1. The six (6) allotments in Schedule 2, below are deleted from Part 7 Schedule 6 Land Designated for Community Infrastructure of the Planning Scheme for Mareeba Shire.

SCHEDULE 2

PROPERTY DESCRIPTION	CODE	PURPOSE	TENURE	ADDRESS	LOCALITY
Lot 3 LD109	P4	Reserve for Local Government Purposes	RE		ALMADEN
Lot 191 HG38	P1	Sanitary Reserve	RE		DIMBULAH
Lot 501 HG558	P4	Reserve for Local Government Purposes	RE		DIMBULAH
Lot 5 DA180	P22	Rubbish Reserve	RE		MOUNT CARBINE
Lot 2 DA36	P37	Rubbish & Sanitary Reserve	RE		MOUNT MOLLOY
Lot 185 NR8040	P37	Rubbish and Sanitary Reserve	RE	Kennedy Highway	SPEEWAH

2. The eleven (11) allotments in Schedule 3, below are included in Part 7 Schedule 6 Land Designated for Community Infrastructure of the Planning Scheme for Mareeba Shire.

This is the true and correct copy of Planning Scheme Amendment No. 1 of 2007 adopted by Council on 20 November 2007 and commencing on 23 November 2007.


Andy L. Smith
A/Chief Executive Officer

20 November 2007

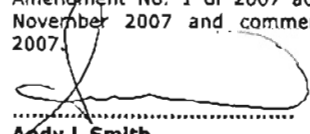
Mareeba Shire – a great place to live.
Mareeba - biggest town on the Tablelands of the Cairns Hinterland.

SCHEDULE 3

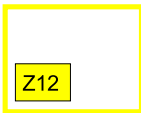
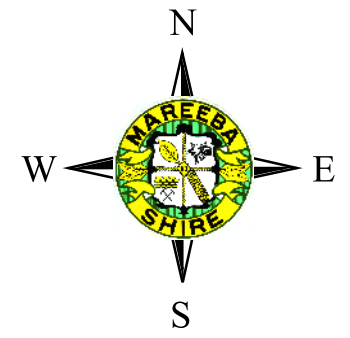
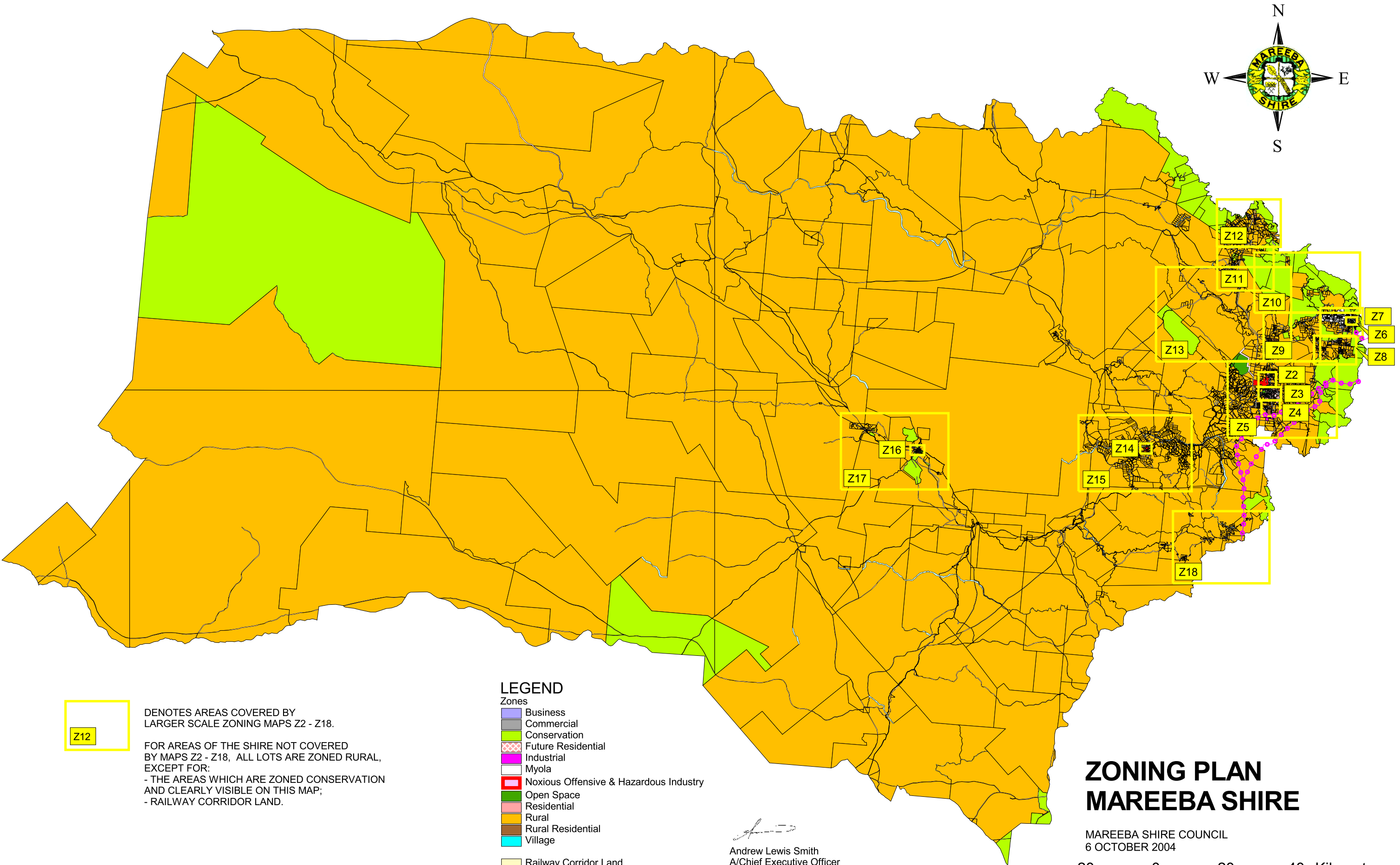
PROPERTY DESCRIPTION	CODE	PURPOSE	TENURE	ADDRESS	LOCALITY
Lot 3 LD109	P50	Waste Management Facilities	RE	Burke Development Road	ALMADEN
Lot 191 HG38	P50	Waste Management Facilities	RE	Mareeba/Dimbulah Road	MUTCHILBA
Lot 501 HG558	P50	Waste Management Facilities	RE	Raleigh Street	DIMBULAH
Lot 5 DA180	P50	Waste Management Facilities	RE	Peninsula Development Road	MOUNT CARBINE
Lot 2 DA36	P50	Waste Management Facilities	RE	Bakers Road	MOUNT MOLLOY
Lot 185 NR8040	P50	Waste Management Facilities	RE	Kennedy Highway	SPEEWAH
Lot 517 CP851523	P50	Waste Management Facilities	RE	Vaughan Street	MAREEBA
Lot 569 CPM3568	P50	Waste Management Facilities	RE	Vaughan Street	MAREEBA
Lot 223 DA353	P50	Waste Management Facilities	RE	Euluma Creek Road	JULATTEN
Lot 15 CP852249	P50	Waste Management Facilities	RE	Herberton/Petford Road	IRVINEBANK
Lot 130 LD155	P50	Waste Management Facilities	RE	Burke Development Road	CHILLAGOE

- 3.** The zoning maps of the Planning Scheme for Mareeba Shire are amended through the inclusion of new Code P50 to indicate those allotments designated for Community Infrastructure (Waste Disposal Facilities).

This is the true and correct copy of Planning Scheme Amendment No. 1 of 2007 adopted by Council on 20 November 2007 and commencing on 23 November 2007.


Andy L. Smith
A/Chief Executive Officer

20 November 2007



DENOTES AREAS COVERED BY LARGER SCALE ZONING MAPS Z2 - Z18.

FOR AREAS OF THE SHIRE NOT COVERED BY MAPS Z2 - Z18, ALL LOTS ARE ZONED RURAL, EXCEPT FOR:

- THE AREAS WHICH ARE ZONED CONSERVATION AND CLEARLY VISIBLE ON THIS MAP;
- RAILWAY CORRIDOR LAND.

LEGEND

- Zones
- Business
 - Commercial
 - Conservation
 - Future Residential
 - Industrial
 - Myola
 - Noxious Offensive & Hazardous Industry
 - Open Space
 - Residential
 - Rural
 - Rural Residential
 - Village
- Railway Corridor Land
- Road Reserve
- Waterway
- Easement
- Powerlink Transmission Lines (132kV)
(Operating works for the purposes of the Electricity Act)

Andrew Lewis Smith
A/Chief Executive Officer
Mareeba Shire Council

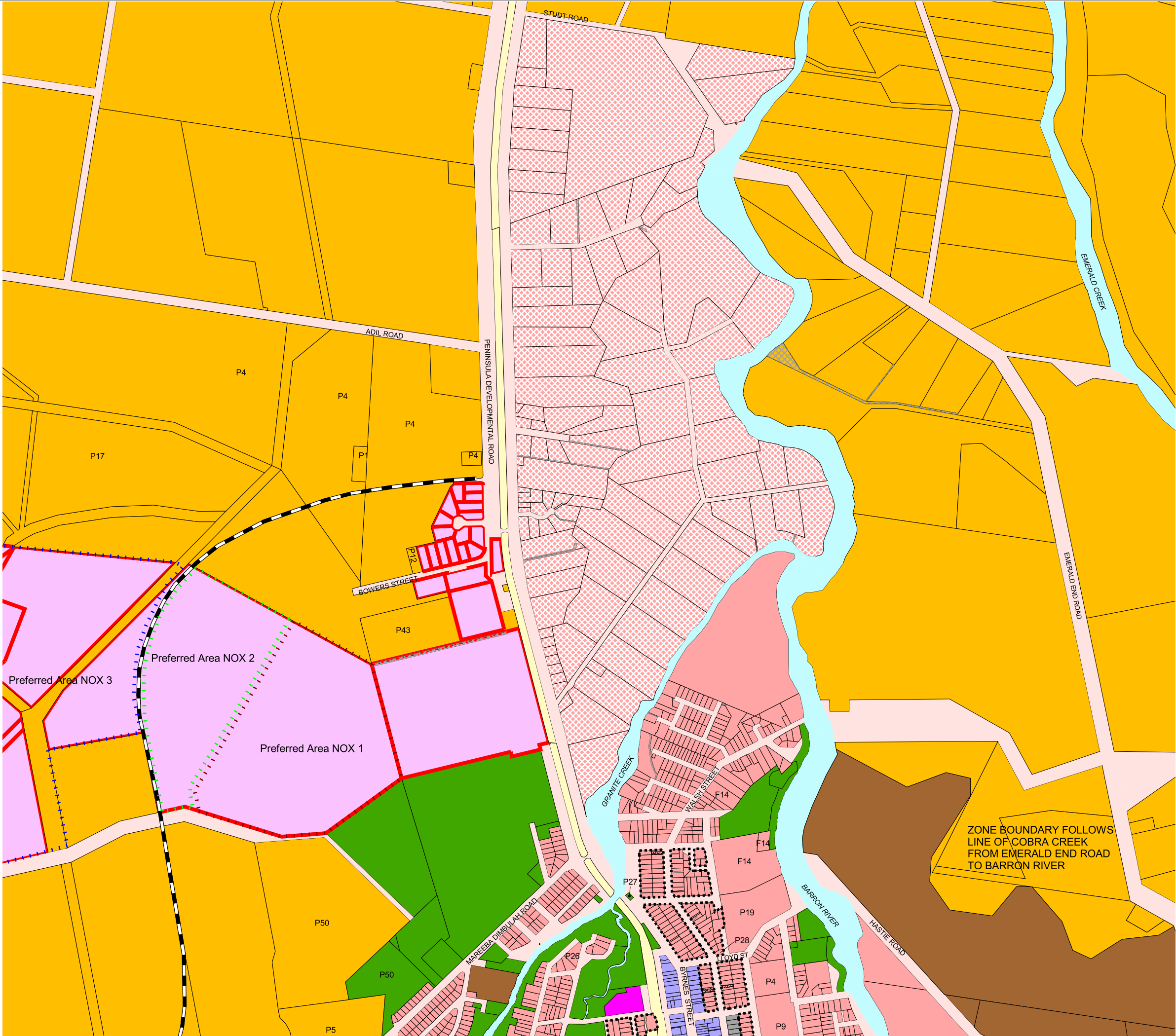
Incorporates Planning Scheme Amendment 1 of 2007.
Adopted 20 November 2007.
Commenced 23 November 2007.

**ZONING PLAN
MAREEBA SHIRE**

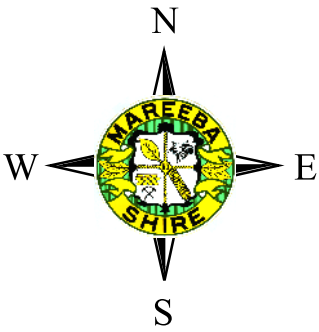
MAREEBA SHIRE COUNCIL
6 OCTOBER 2004

20 0 20 40 Kilometers

© Mareeba Shire Council 2004
Cadastral Data © Dept of Natural Resources Mines & Energy 2004.
Powerlink Transmission Lines data © Powerlink Queensland 2004.
While every care is taken to ensure the accuracy of this data, Mareeba Shire Council and the other agencies listed make no representations or warranties about its accuracy, reliability, completeness, or suitability for any particular purpose and disclaims all responsibility and all liability (including without limitation, liability in negligence) for all expenses, losses, damages (including indirect or consequential damage) and costs which you might incur as a result of the data being inaccurate or incomplete in any way and for any reason.



© Mareeba Shire Council 2004
Cadastral Data © Dept of Natural Resources Mines & Energy 2004.
Proposed Mareeba Bypass Road alignment supplied by Dept of Main Roads.
While every care is taken to ensure the accuracy of this data,
Mareeba Shire Council and the other agencies listed make no representations
or warranties about its accuracy, reliability, completeness, or suitability for any
particular purpose and disclaims all responsibility and all liability (including
without limitation, liability in negligence) for all expenses, losses, damages
(including indirect or consequential damage) and costs which you might incur as
a result of the data being inaccurate or incomplete in any way and for any reason.



LEGEND

- Zones**
- Business
 - Commercial
 - Conservation
 - Future Residential
 - Industrial
 - Myola
 - Noxious Offensive & Hazardous Industry
 - Open Space
 - Residential
 - Rural
 - Rural Residential
 - Village

- Preferred Area 1
- Preferred Area NOX 1
- Preferred Area NOX 2
- Preferred Area NOX 3

- Railway Corridor Land
- Road Reserve
- Waterway
- Easement
- Proposed Mareeba Bypass

Refer to Schedule 5 "Special Facilities"
for explanation of "F" codes and
Schedule 6 "Community Infrastructure"
for explanation of "P" codes.

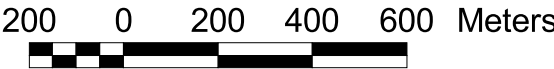
The boundaries of Preferred Areas NOX 1,
NOX 2 and NOX 3 are dependent on the
layout of the Mareeba Industrial Park and the
proposed alignment of the future Main Roads
Mareeba Bypass.

Andrew Lewis Smith
A/Chief Executive Officer
Mareeba Shire Council

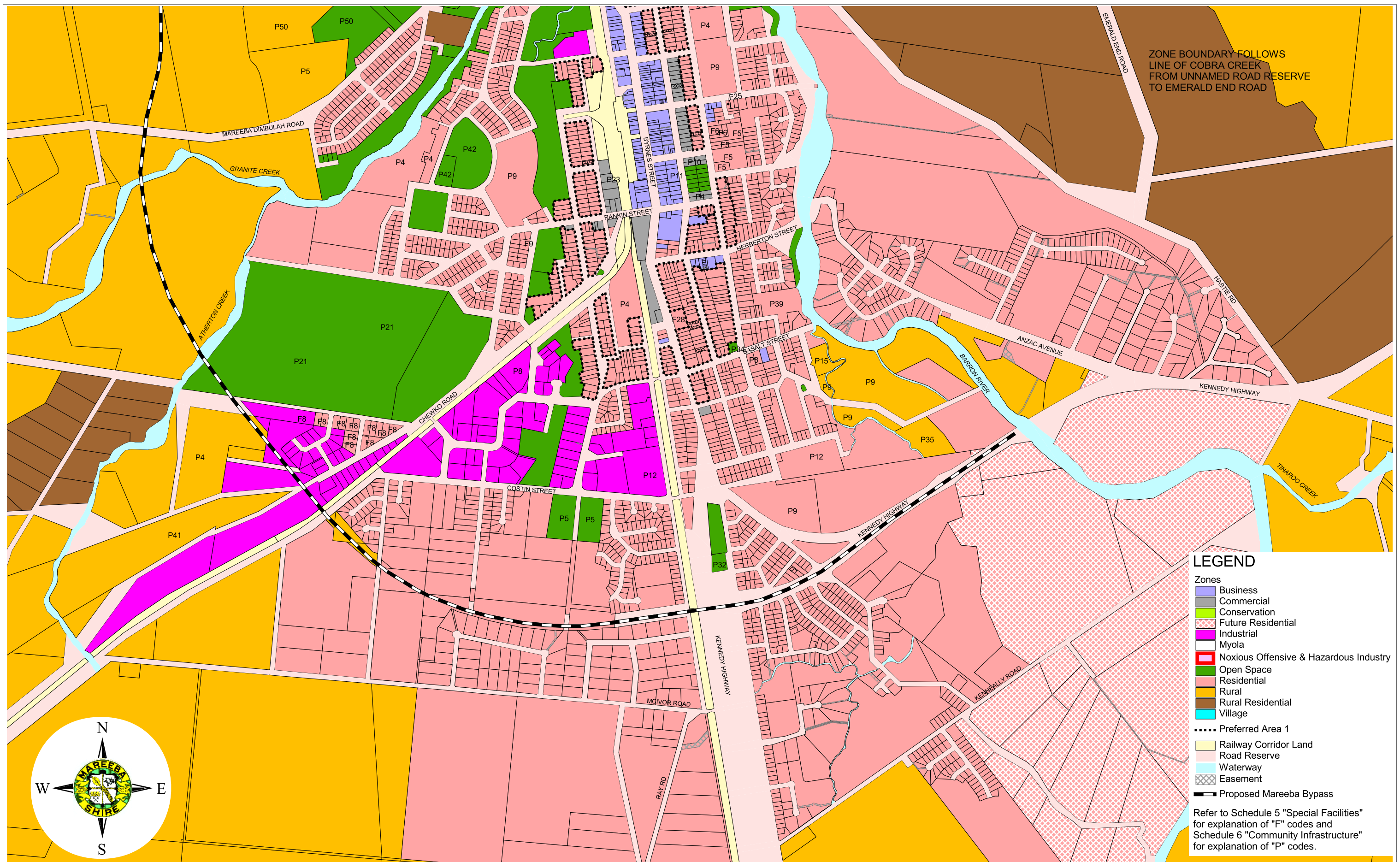
Incorporates Planning Scheme Amendment 1
of 2007.
Adopted 20 November 2007.
Commenced 23 November 2007.

ZONING PLAN MAREEBA NORTH

MAREEBA SHIRE COUNCIL
16 SEPTEMBER 2004

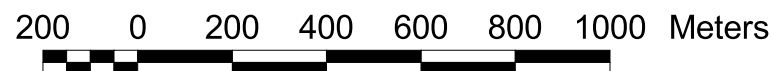


MAP No **Z2**



© Mareeba Shire Council 2004
 Cadastral Data © Dept of Natural Resources Mines & Energy 2004
 Proposed Mareeba Bypass Road alignment supplied by Dept of Main Roads.
 While every care is taken to ensure the accuracy of this data, Mareeba Shire Council and the other agencies listed make no representations or warranties about its accuracy, reliability, completeness, or suitability for any particular purpose and disclaims all responsibility and all liability (including without limitation, liability in negligence) for all expenses, losses, damages (including indirect or consequential damage) and costs which you might incur as a result of the data being inaccurate or incomplete in any way and for any reason.

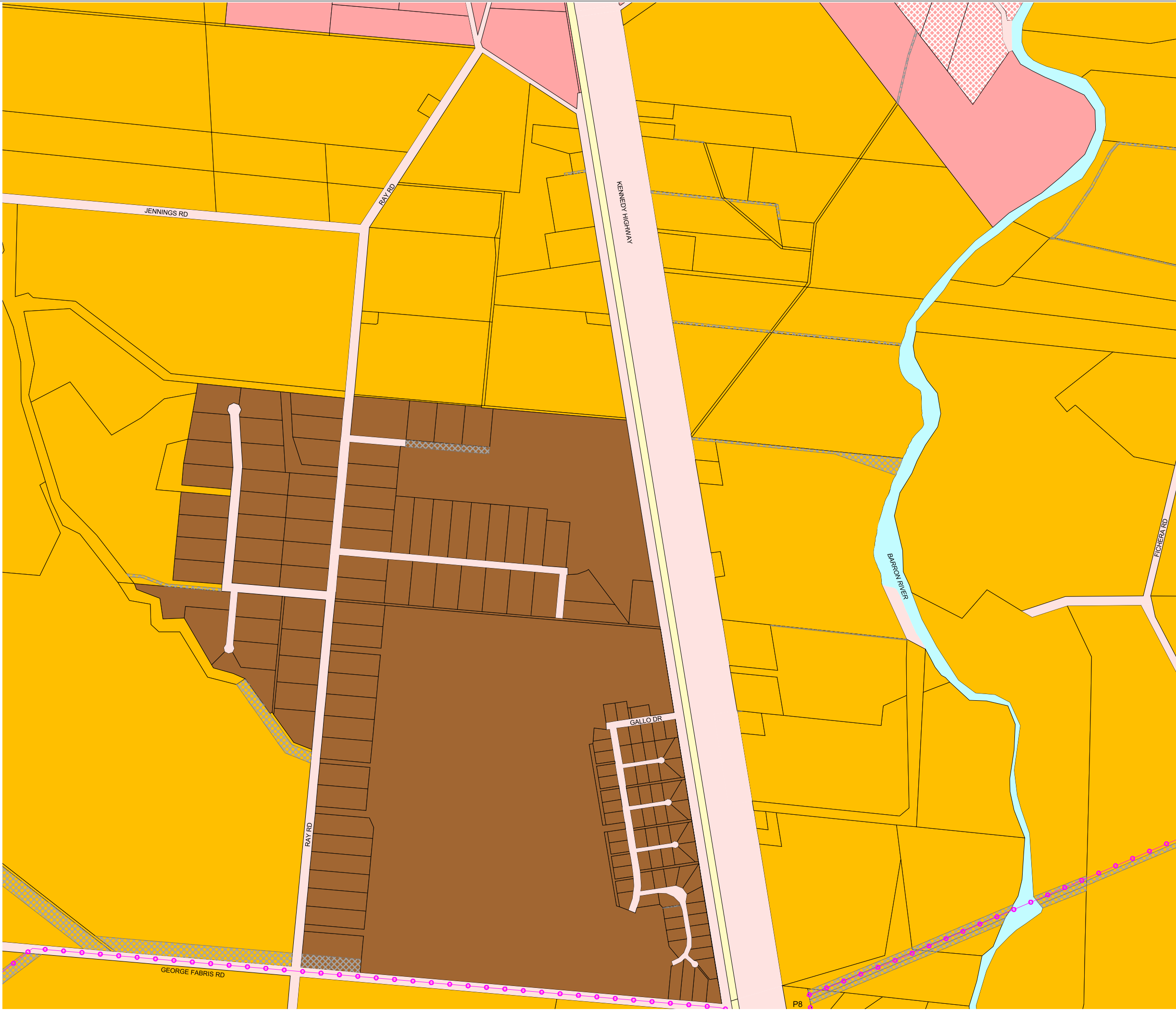
Andrew Lewis Smith
 Andrew Lewis Smith
 A/Chief Executive Officer
 Mareeba Shire Council
 Incorporates Planning Scheme Amendment 1 of 2007.
 Adopted 20 November 2007.
 Commenced 23 November 2007.



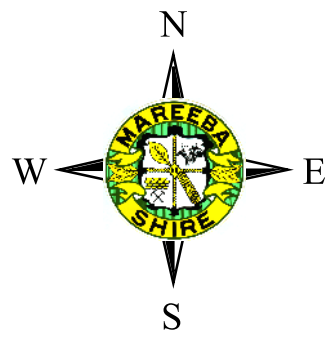
ZONING PLAN MAREEBA CENTRAL

MAREEBA SHIRE COUNCIL
16 SEPTEMBER 2004

MAP No **Z3**



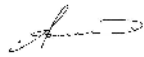
© Mareeba Shire Council 2004
Cadastral Data © Dept of Natural Resources Mines & Energy 2004
Powerlink Transmission Lines data © Powerlink Queensland 2004.
While every care is taken to ensure the accuracy of this data,
Mareeba Shire Council and the other agencies listed make no
representations or warranties about its accuracy, reliability, completeness,
or suitability for any particular purpose and disclaims all responsibility and
all liability (including without limitation, liability in negligence) for all
expenses, losses, damages (including indirect or consequential damage)
and costs which you might incur as a result of the data being inaccurate
or incomplete in any way and for any reason.



LEGEND

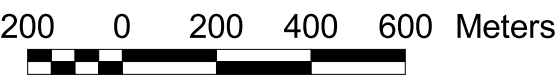
- Zones**
- Business
 - Commercial
 - Conservation
 - Future Residential
 - Industrial
 - Myola
 - Noxious Offensive & Hazardous Industry
 - Open Space
 - Residential
 - Rural
 - Rural Residential
 - Village
- Railway Corridor Land
Road Reserve
Easement
Waterway
Powerlink Transmission Lines (132kV)
(Operating works for the purposes of the Electricity Act)

Refer to Schedule 5 "Special Facilities"
for explanation of "F" codes and
Schedule 6 "Community Infrastructure"
for explanation of "P" codes.

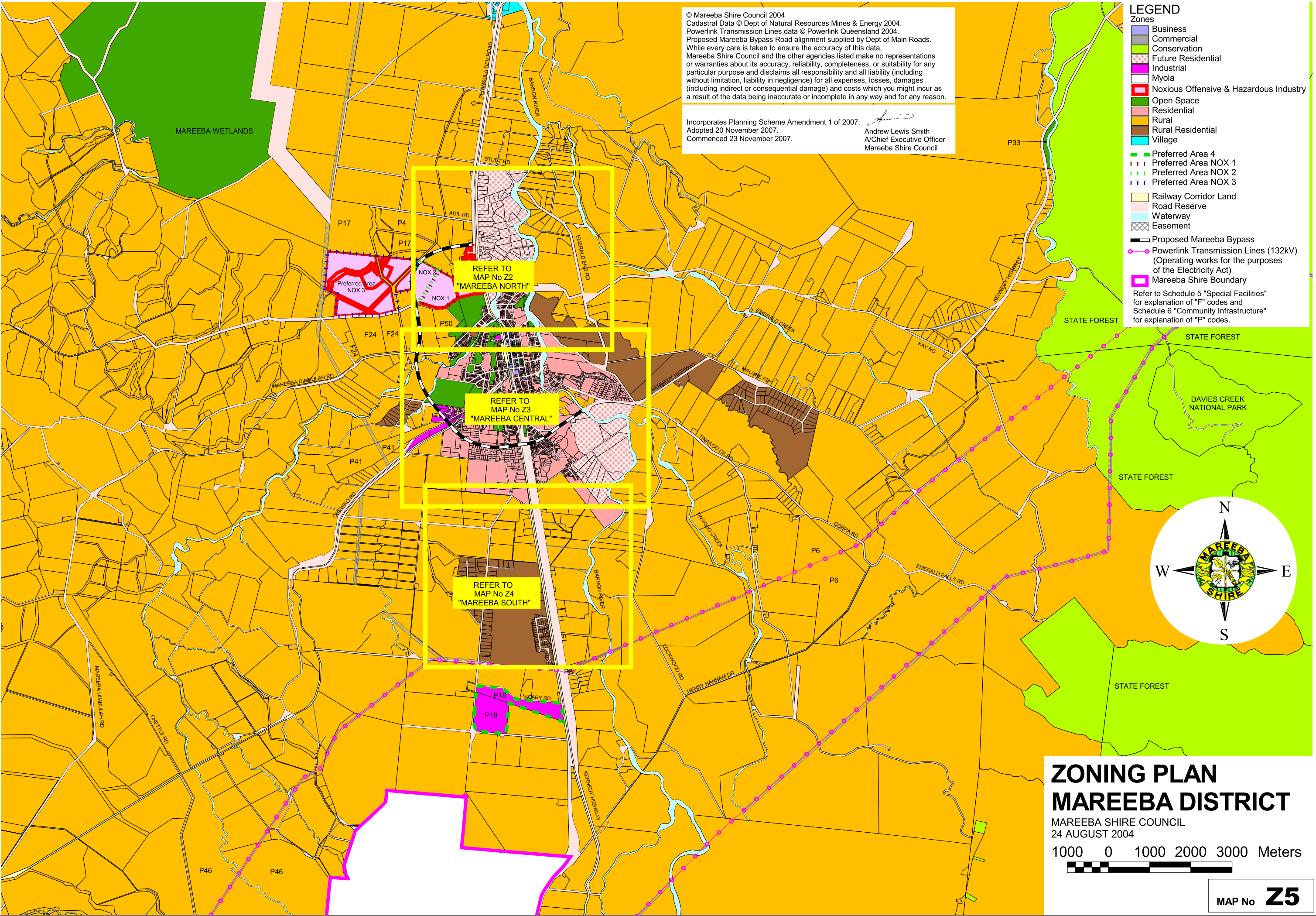

Andrew Lewis Smith
A/Chief Executive Officer
Mareeba Shire Council
Incorporates Planning Scheme Amendment 1
of 2007.
Adopted 20 November 2007.
Commenced 23 November 2007.

ZONING PLAN MAREEBA SOUTH

MAREEBA SHIRE COUNCIL
24 AUGUST 2004



MAP No **Z4**



© Mareeba Shire Council 2004
Cadastral Data © Dept of Natural Resources Mines & Energy 2004.
While every care is taken to ensure the accuracy of this data,
Mareeba Shire Council and the other agencies listed make no representations
or warranties about its accuracy, reliability, completeness, or suitability for any
particular purpose and disclaims all responsibility and all liability (including
without limitation, liability in negligence) for all expenses, losses, damages
(including indirect or consequential damage) and costs which you might incur as
a result of the data being inaccurate or incomplete in any way and for any reason.

LEGEND

- Zones
- Business
 - Commercial
 - Conservation
 - Future Residential
 - Industrial
 - Myola
 - Noxious Offensive & Hazardous Industry
 - Open Space
 - Residential
 - Rural
 - Rural Residential
 - Village

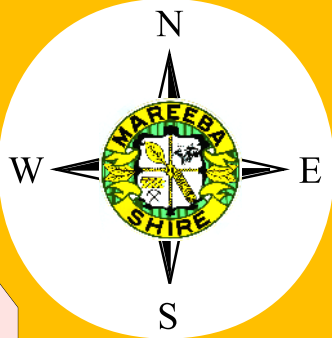
Preferred Area 5

- Railway Corridor Land
- Road Reserve
- Waterway
- Easement

Refer to Schedule 5 "Special Facilities"
for explanation of "F" codes and
Schedule 6 "Community Infrastructure"
for explanation of "P" codes.

Andrew Lewis Smith
A/Chief Executive Officer
Mareeba Shire Council
Incorporates Planning Scheme Amendment 1
of 2007.
Adopted 20 November 2007.
Commenced 23 November 2007.

MYOLA ZONE
REFER TO MAP No Z7
"KURANDA DISTRICT"



ZONING PLAN
KURANDA

MAREEBA SHIRE COUNCIL
11 AUGUST 2004

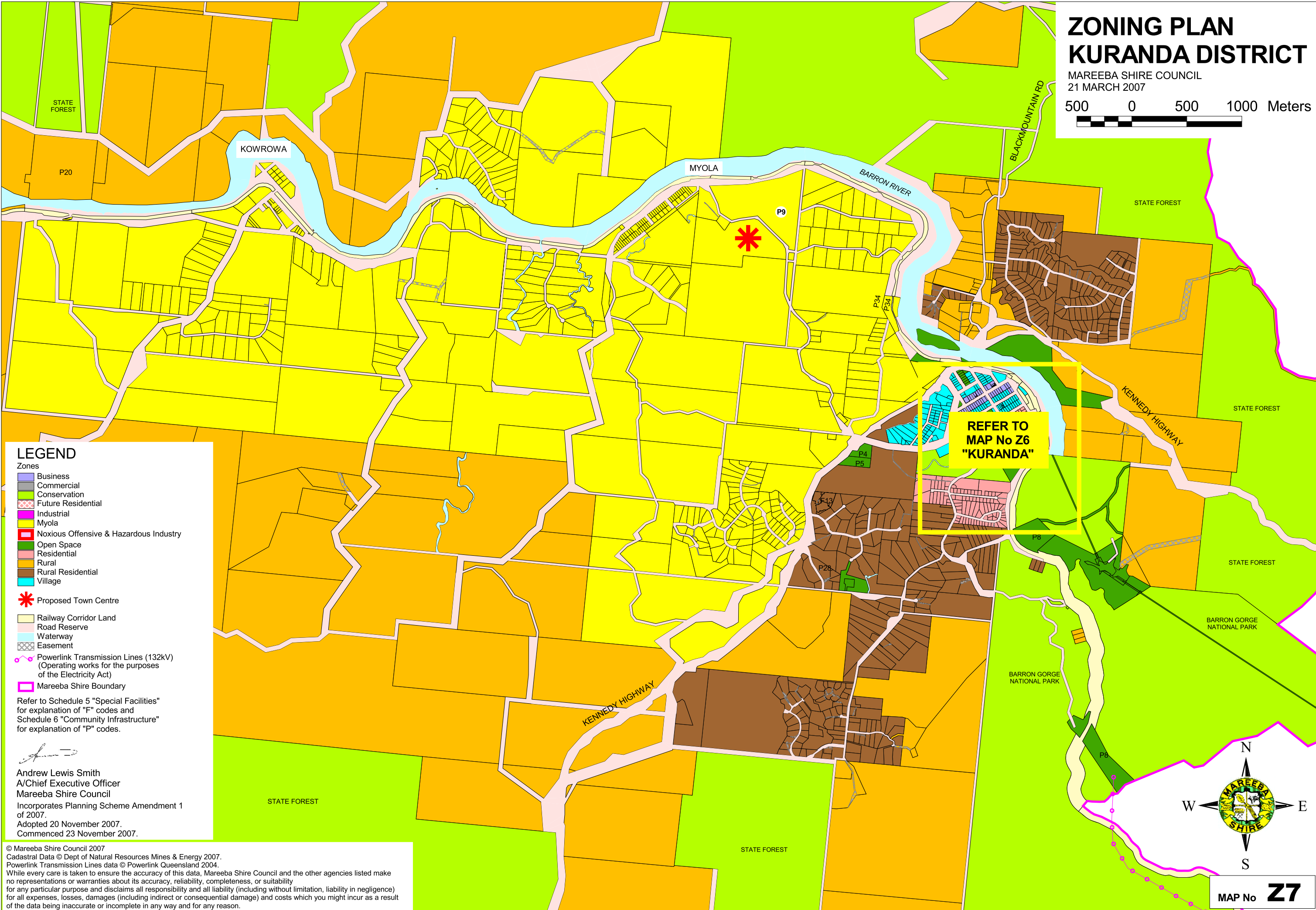
100 0 100 200 300 Meters



MAP No **Z6**

ZONING PLAN KURANDA DISTRICT

MAREEBA SHIRE COUNCIL
21 MARCH 2007



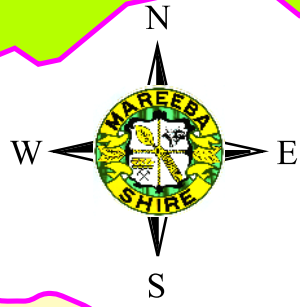
LEGEND

- Zones**
- Business
 - Commercial
 - Conservation
 - Future Residential
 - Industrial
 - Myola
 - Noxious Offensive & Hazardous Industry
 - Open Space
 - Residential
 - Rural
 - Rural Residential
 - Village
- Proposed Town Centre
- Railway Corridor Land
- Road Reserve
- Waterway
- Easement
- Powerlink Transmission Lines (132kV)
(Operating works for the purposes of the Electricity Act)
- Mareeba Shire Boundary

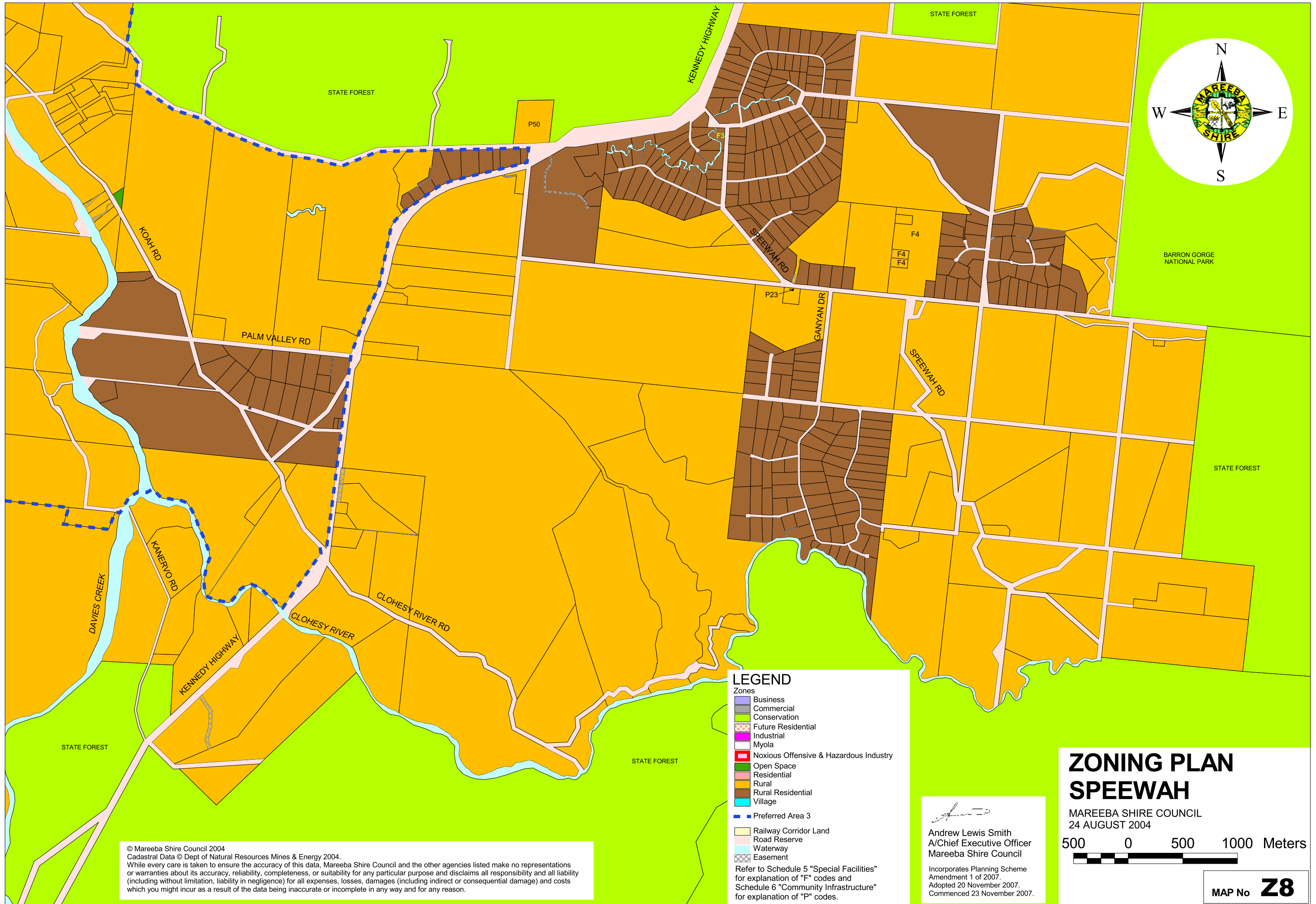
Refer to Schedule 5 "Special Facilities" for explanation of "F" codes and Schedule 6 "Community Infrastructure" for explanation of "P" codes.

Andrew Lewis Smith
A/Chief Executive Officer
Mareeba Shire Council
Incorporates Planning Scheme Amendment 1 of 2007.
Adopted 20 November 2007.
Commenced 23 November 2007.

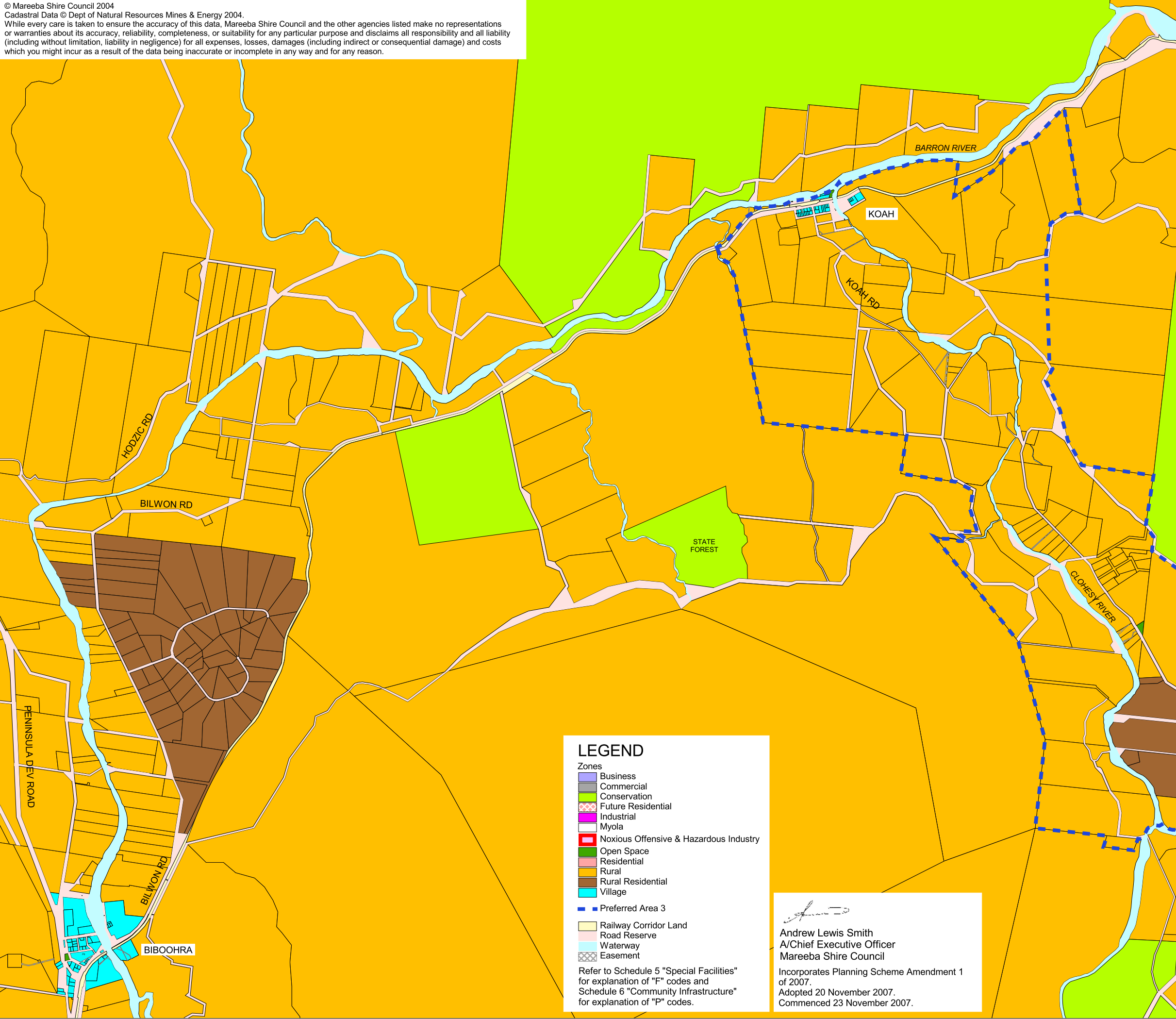
© Mareeba Shire Council 2007
Cadastral Data © Dept of Natural Resources Mines & Energy 2007.
Powerlink Transmission Lines data © Powerlink Queensland 2004.
While every care is taken to ensure the accuracy of this data, Mareeba Shire Council and the other agencies listed make no representations or warranties about its accuracy, reliability, completeness, or suitability for any particular purpose and disclaims all responsibility and all liability (including without limitation, liability in negligence) for all expenses, losses, damages (including indirect or consequential damage) and costs which you might incur as a result of the data being inaccurate or incomplete in any way and for any reason.



MAP No **27**



© Mareeba Shire Council 2004
Cadastral Data © Dept of Natural Resources Mines & Energy 2004.
While every care is taken to ensure the accuracy of this data, Mareeba Shire Council and the other agencies listed make no representations or warranties about its accuracy, reliability, completeness, or suitability for any particular purpose and disclaims all responsibility and all liability (including without limitation, liability in negligence) for all expenses, losses, damages (including indirect or consequential damage) and costs which you might incur as a result of the data being inaccurate or incomplete in any way and for any reason.



LEGEND


Zones

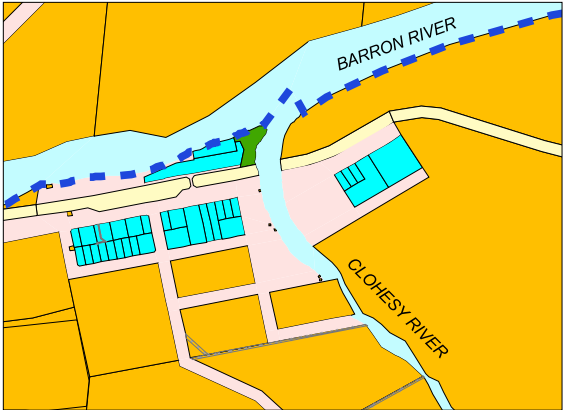
- Business
- Commercial
- Conservation
- Future Residential
- Industrial
- Myola
- Noxious Offensive & Hazardous Industry
- Open Space
- Residential
- Rural
- Rural Residential
- Village

■ Preferred Area 3

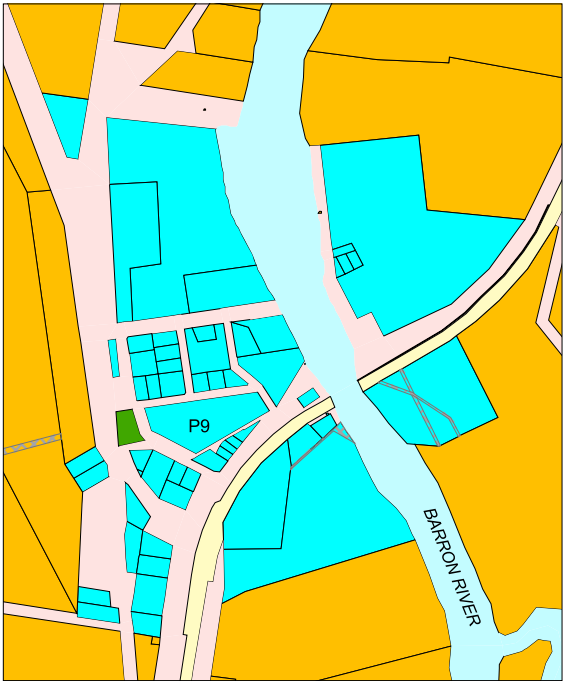
- Railway Corridor Land
- Road Reserve
- Waterway
- Easement

Refer to Schedule 5 "Special Facilities" for explanation of "F" codes and Schedule 6 "Community Infrastructure" for explanation of "P" codes.

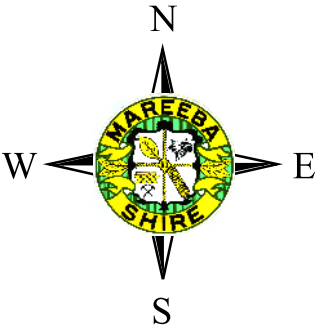

Andrew Lewis Smith
A/Chief Executive Officer
Mareeba Shire Council
Incorporates Planning Scheme Amendment 1 of 2007.
Adopted 20 November 2007.
Commenced 23 November 2007.



INSET - KOAH TOWNSHIP



INSET - BIBOOHRA TOWNSHIP



ZONING PLAN BIBOOHRA - KOAH

MAREEBA SHIRE COUNCIL
6 OCTOBER 2004

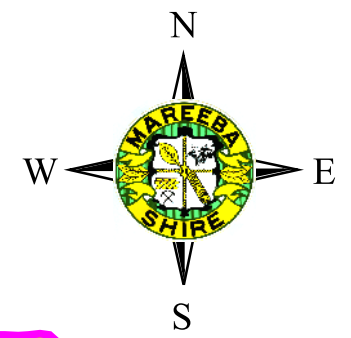


MAP No **Z9**

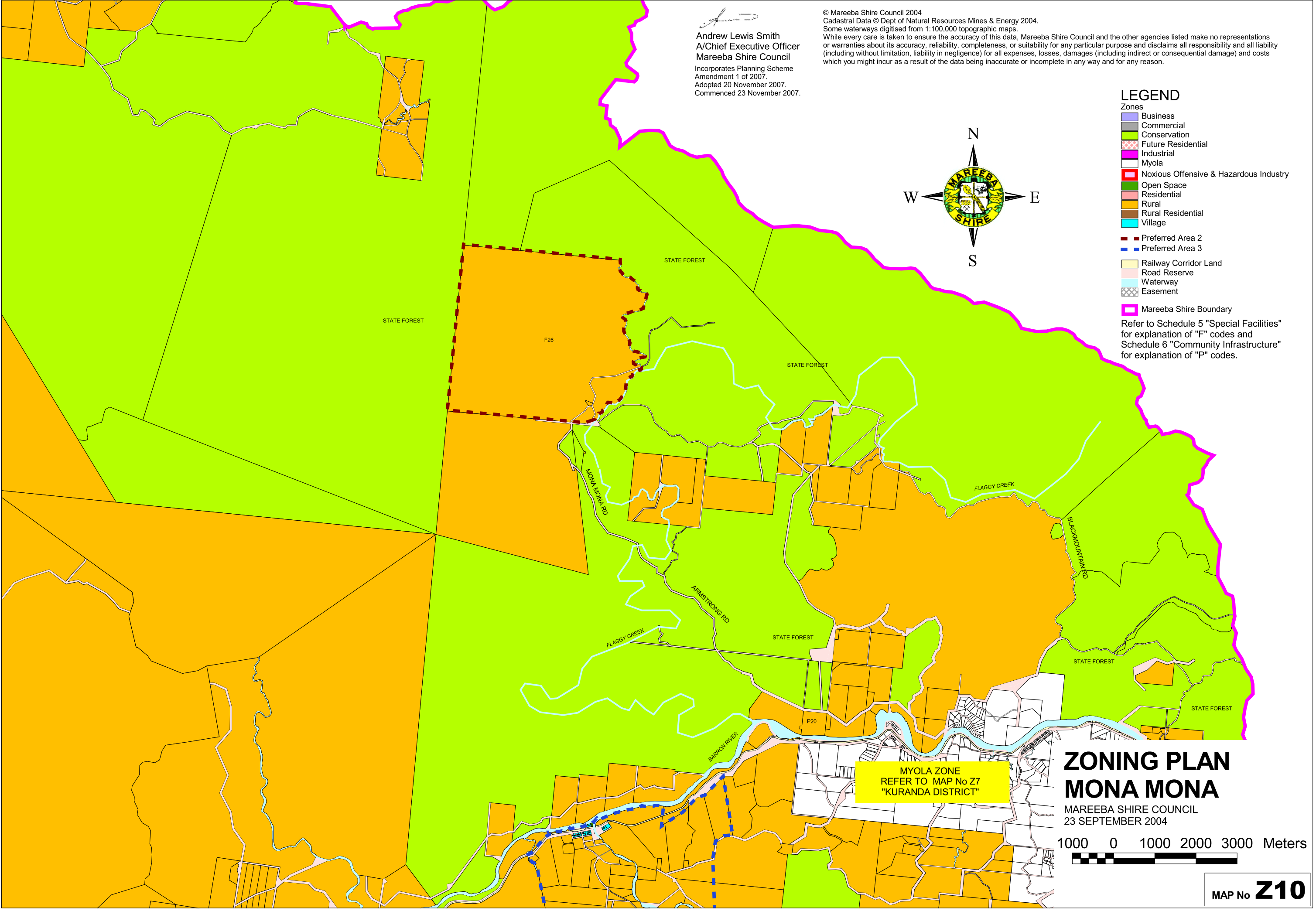


Andrew Lewis Smith
A/Chief Executive Officer
Mareeba Shire Council
Incorporates Planning Scheme
Amendment 1 of 2007.
Adopted 20 November 2007.
Commenced 23 November 2007.

© Mareeba Shire Council 2004
Cadastral Data © Dept of Natural Resources Mines & Energy 2004.
Some waterways digitised from 1:100,000 topographic maps.
While every care is taken to ensure the accuracy of this data, Mareeba Shire Council and the other agencies listed make no representations or warranties about its accuracy, reliability, completeness, or suitability for any particular purpose and disclaims all responsibility and all liability (including without limitation, liability in negligence) for all expenses, losses, damages (including indirect or consequential damage) and costs which you might incur as a result of the data being inaccurate or incomplete in any way and for any reason.



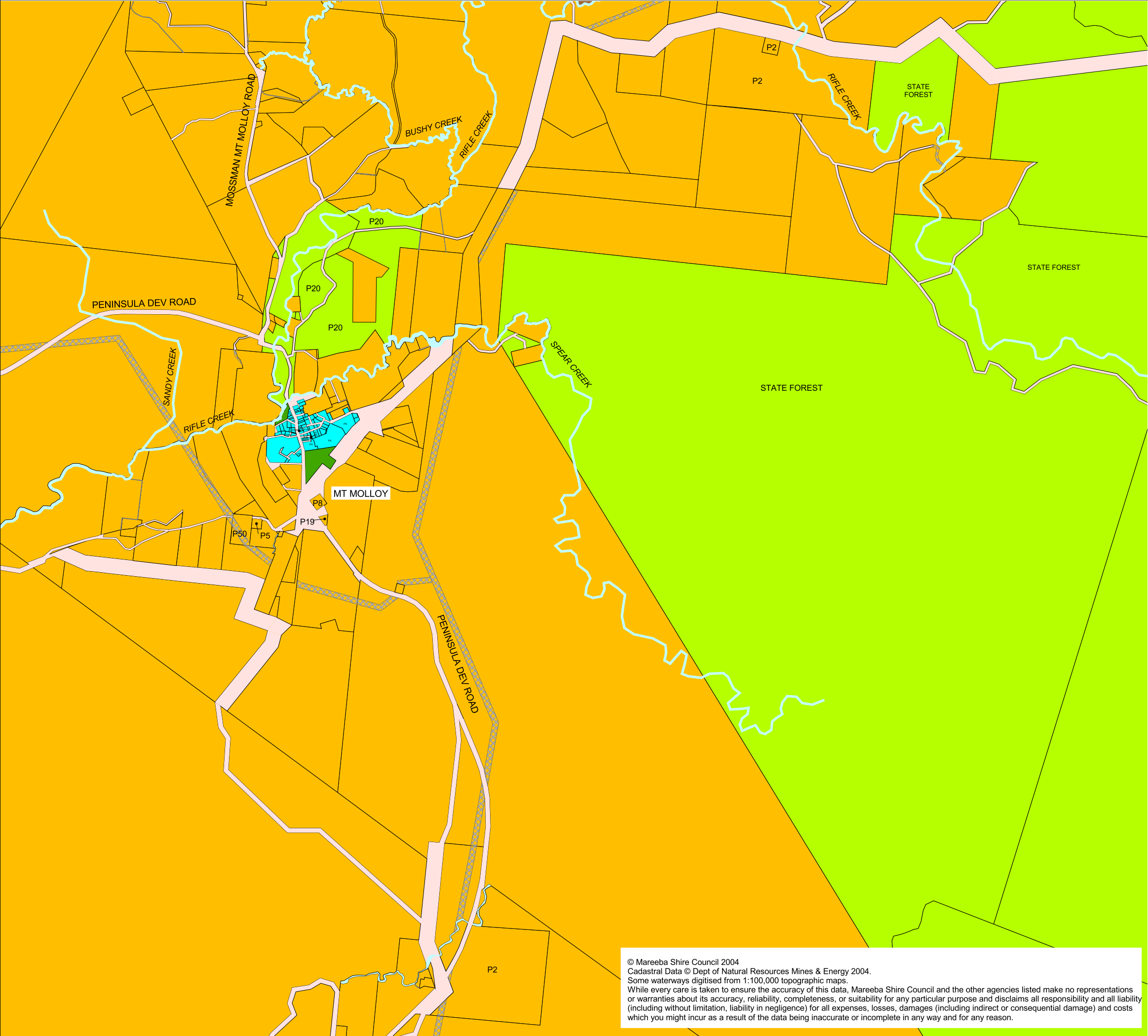
- LEGEND**
- Zones
- Business
 - Commercial
 - Conservation
 - Future Residential
 - Industrial
 - Myola
 - Noxious Offensive & Hazardous Industry
 - Open Space
 - Residential
 - Rural
 - Rural Residential
 - Village
- Preferred Area 2
- Preferred Area 3
- Railway Corridor Land
- Road Reserve
- Waterway
- Easement
- Mareeba Shire Boundary
- Refer to Schedule 5 "Special Facilities" for explanation of "F" codes and Schedule 6 "Community Infrastructure" for explanation of "P" codes.



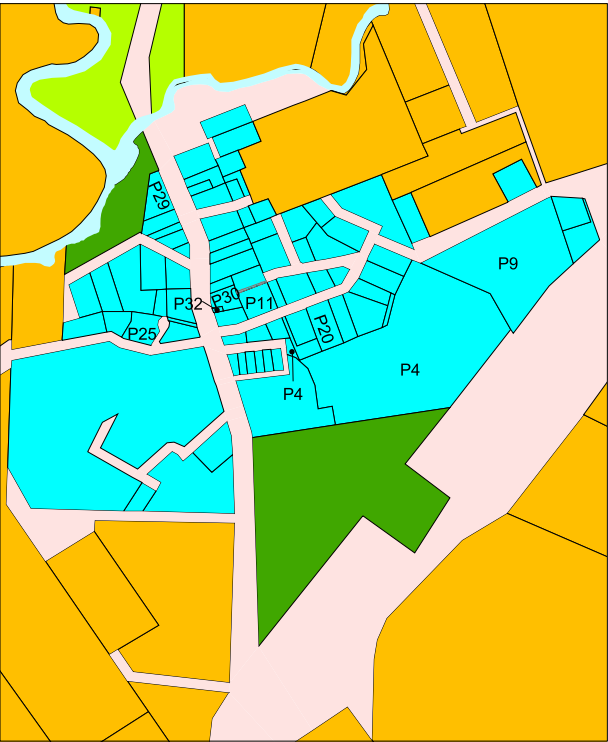
ZONING PLAN
MONA MONA
MAREEBA SHIRE COUNCIL
23 SEPTEMBER 2004

1000 0 1000 2000 3000 Meters

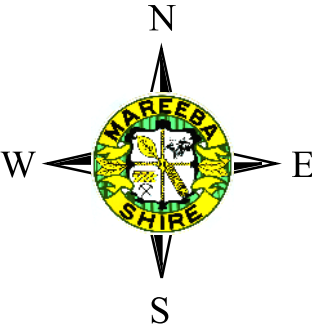
MAP No **Z10**



© Mareeba Shire Council 2004
Cadastral Data © Dept of Natural Resources Mines & Energy 2004.
Some waterways digitised from 1:100,000 topographic maps.
While every care is taken to ensure the accuracy of this data, Mareeba Shire Council and the other agencies listed make no representations or warranties about its accuracy, reliability, completeness, or suitability for any particular purpose and disclaims all responsibility and all liability (including without limitation, liability in negligence) for all expenses, losses, damages (including indirect or consequential damage) and costs which you might incur as a result of the data being inaccurate or incomplete in any way and for any reason.



INSET - MT MOLLOY TOWNSHIP



LEGEND

- Zones
- Business
 - Commercial
 - Conservation
 - Future Residential
 - Industrial
 - Myola
 - Noxious Offensive & Hazardous Industry
 - Open Space
 - Residential
 - Rural
 - Rural Residential
 - Village
- Railway Corridor Land
Road Reserve
Waterway
Easement

Refer to Schedule 5 "Special Facilities" for explanation of "F" codes and Schedule 6 "Community Infrastructure" for explanation of "P" codes.

Incorporates Planning Scheme Amendment 1 of 2007.
Adopted 20 November 2007.
Commenced 23 November 2007.


Andrew Lewis Smith
A/Chief Executive Officer
Mareeba Shire Council


ZONING PLAN
MT MOLLOY

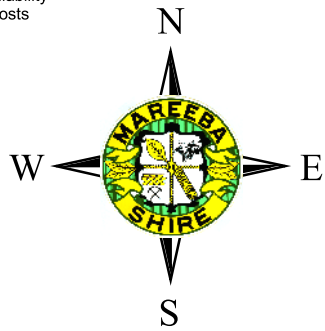
MAREEBA SHIRE COUNCIL
24 AUGUST 2004



MAP No **Z11**

© Mareeba Shire Council 2004
Cadastral Data © Dept of Natural Resources Mines & Energy 2004.
Some waterways digitised from 1:100,000 topographic maps.
While every care is taken to ensure the accuracy of this data, Mareeba Shire Council and the other agencies listed make no representations or warranties about its accuracy, reliability, completeness, or suitability for any particular purpose and disclaims all responsibility and all liability (including without limitation, liability in negligence) for all expenses, losses, damages (including indirect or consequential damage) and costs which you might incur as a result of the data being inaccurate or incomplete in any way and for any reason.


Andrew Lewis Smith
A/Chief Executive Officer
Mareeba Shire Council
Incorporates Planning Scheme Amendment 1 of 2007.
Adopted 20 November 2007.
Commenced 23 November 2007.



ZONING PLAN JULATTEN

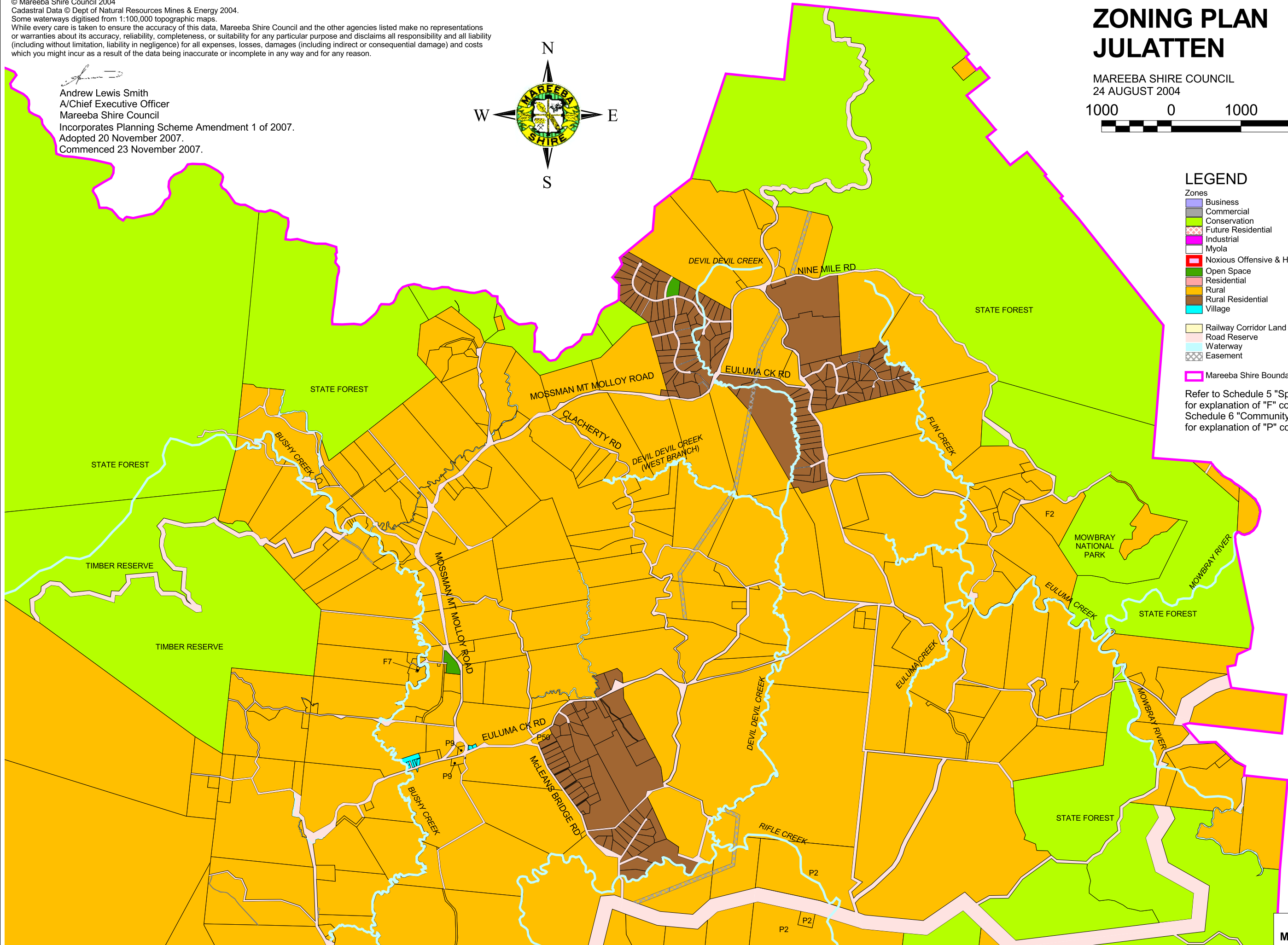
MAREEBA SHIRE COUNCIL
24 AUGUST 2004

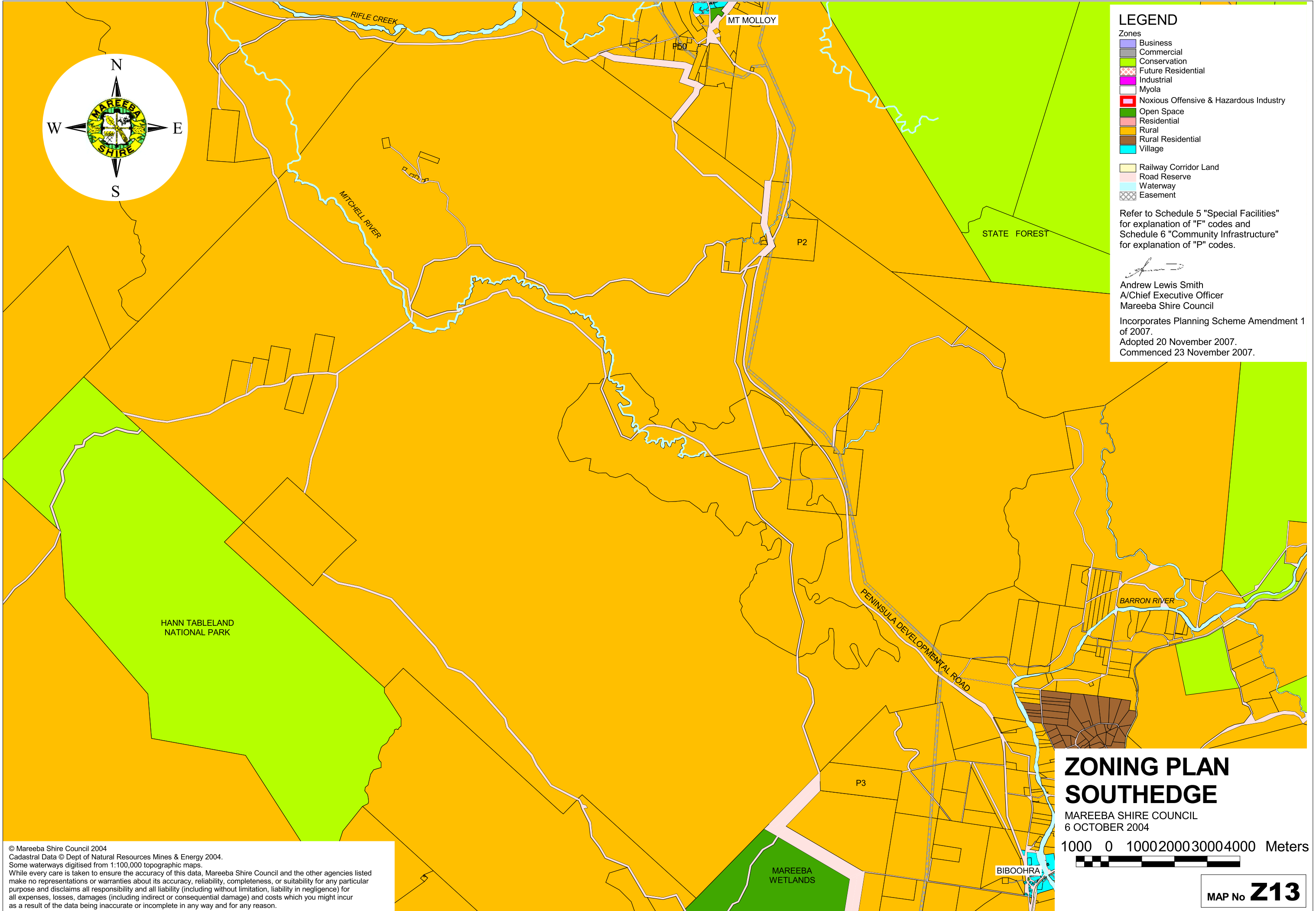
1000 0 1000 2000 Meters

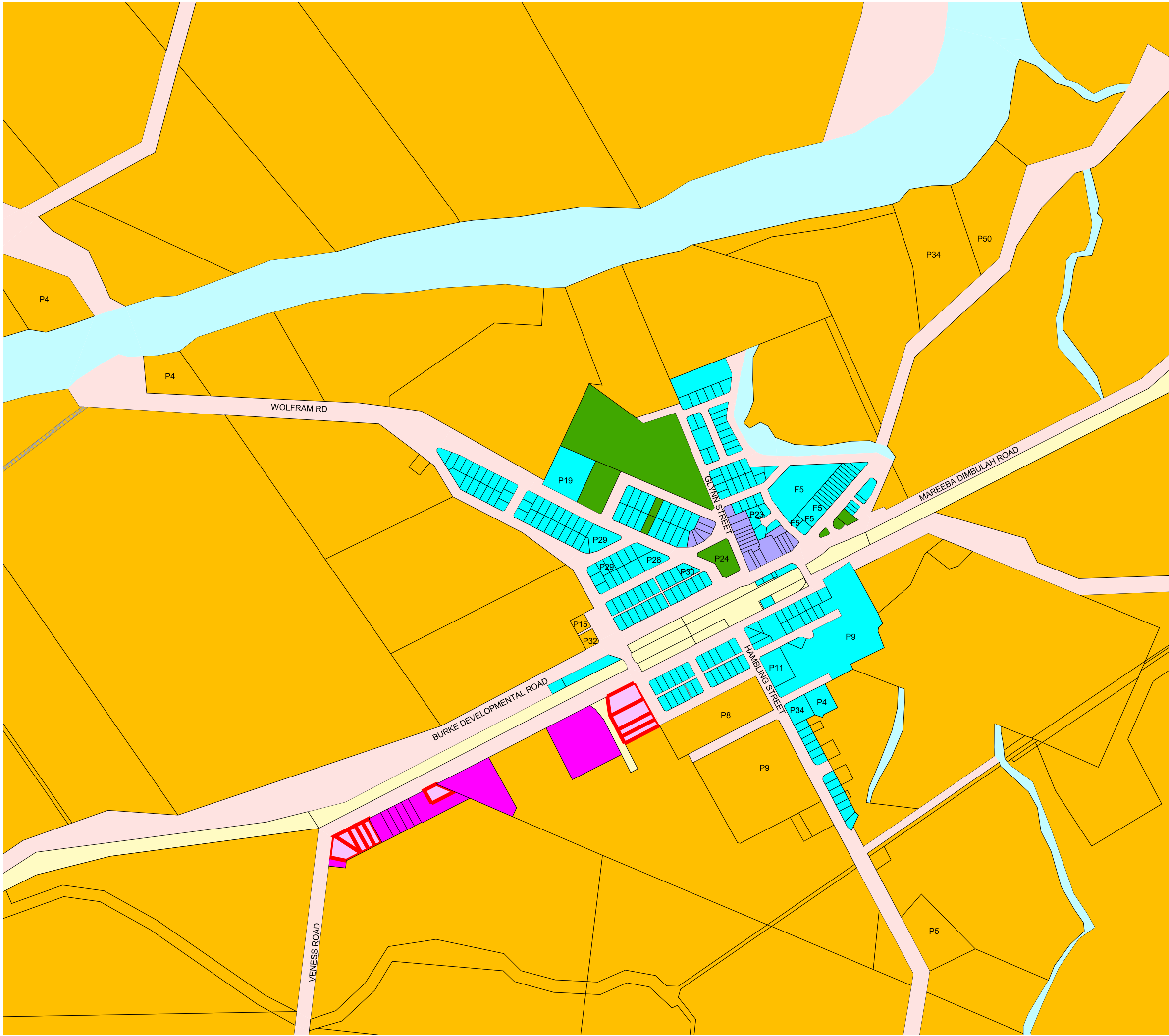
LEGEND

- Zones
- Business
 - Commercial
 - Conservation
 - Future Residential
 - Industrial
 - Myola
 - Noxious Offensive & Hazardous Industry
 - Open Space
 - Residential
 - Rural
 - Rural Residential
 - Village
- Railway Corridor Land
Road Reserve
Waterway
Easement
- Mareeba Shire Boundary

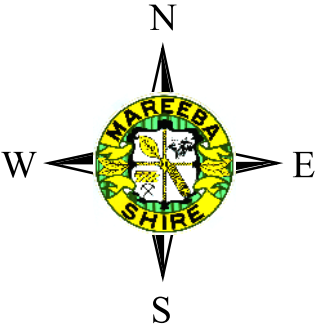
Refer to Schedule 5 "Special Facilities" for explanation of "F" codes and Schedule 6 "Community Infrastructure" for explanation of "P" codes.







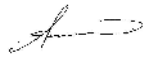
© Mareeba Shire Council 2004
Cadastral Data © Dept of Natural Resources Mines & Energy 2004.
While every care is taken to ensure the accuracy of this data,
Mareeba Shire Council and the other agencies listed make no representations
or warranties about its accuracy, reliability, completeness, or suitability for any
particular purpose and disclaims all responsibility and all liability (including
without limitation, liability in negligence) for all expenses, losses, damages
(including indirect or consequential damage) and costs which you might incur as
a result of the data being inaccurate or incomplete in any way and for any reason.



LEGEND

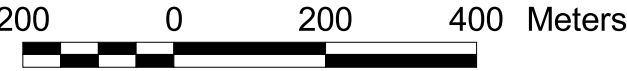
- Zones
- Business
 - Commercial
 - Conservation
 - Future Residential
 - Industrial
 - Myola
 - Noxious Offensive & Hazardous Industry
 - Open Space
 - Residential
 - Rural
 - Rural Residential
 - Village
- Railway Corridor Land
Road Reserve
Waterway
Easement

Refer to Schedule 5 "Special Facilities"
for explanation of "F" codes and
Schedule 6 "Community Infrastructure"
for explanation of "P" codes.

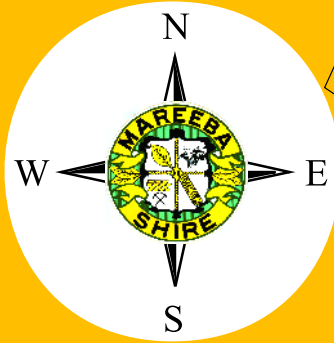
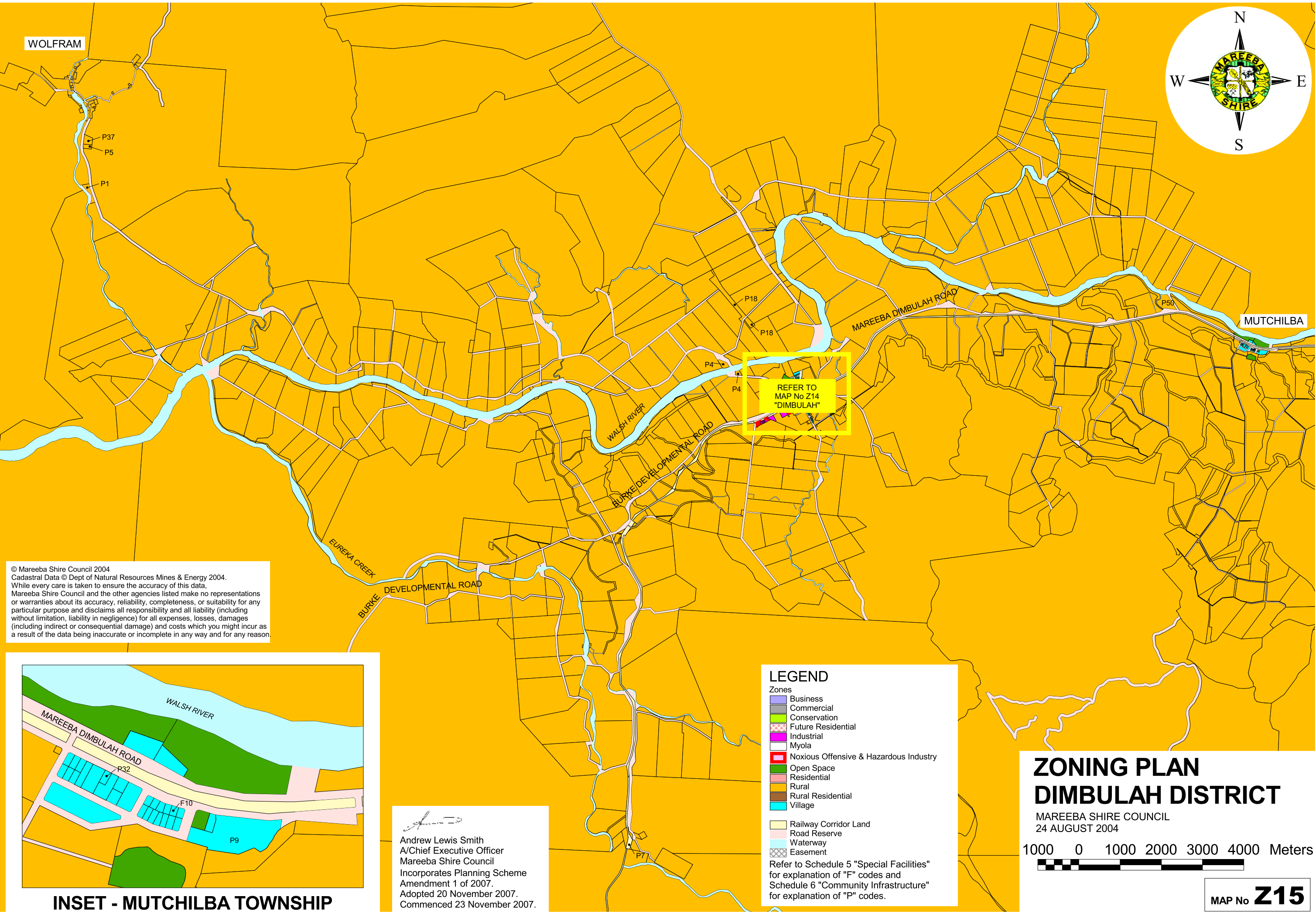

Andrew Lewis Smith
A/Chief Executive Officer
Mareeba Shire Council
Incorporates Planning Scheme Amendment 1
of 2007.
Adopted 20 November 2007.
Commenced 23 November 2007.

ZONING PLAN
DIMBULAH

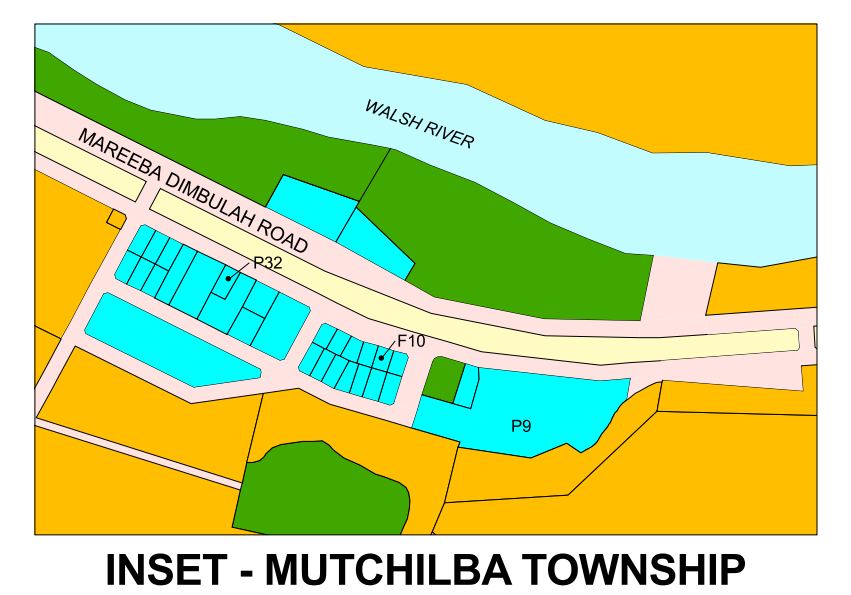
MAREEBA SHIRE COUNCIL
24 AUGUST 2004




MAP No **Z14**



© Mareeba Shire Council 2004
Cadastral Data © Dept of Natural Resources Mines & Energy 2004.
While every care is taken to ensure the accuracy of this data,
Mareeba Shire Council and the other agencies listed make no representations
or warranties about its accuracy, reliability, completeness, or suitability for any
particular purpose and disclaims all responsibility and all liability (including
without limitation, liability in negligence) for all expenses, losses, damages
(including indirect or consequential damage) and costs which you might incur as
a result of the data being inaccurate or incomplete in any way and for any reason.



INSET - MUTCHILBA TOWNSHIP


Andrew Lewis Smith
A/Chief Executive Officer
Mareeba Shire Council
Incorporates Planning Scheme
Amendment 1 of 2007.
Adopted 20 November 2007.
Commenced 23 November 2007.

LEGEND

Zones

- Business
- Commercial
- Conservation
- Future Residential
- Industrial
- Myola
- Noxious Offensive & Hazardous Industry
- Open Space
- Residential
- Rural
- Rural Residential
- Village

Railway Corridor Land
Road Reserve
Waterway
Easement

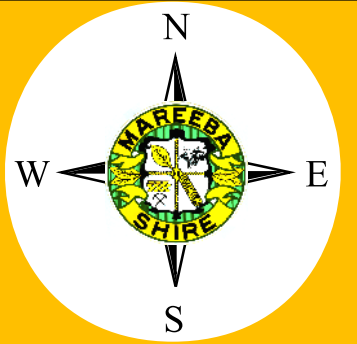
Refer to Schedule 5 "Special Facilities"
for explanation of "F" codes and
Schedule 6 "Community Infrastructure"
for explanation of "P" codes.

**ZONING PLAN
DIMBULAH DISTRICT**

MAREEBA SHIRE COUNCIL
24 AUGUST 2004

1000 0 1000 2000 3000 4000 Meters

MAP No **Z15**

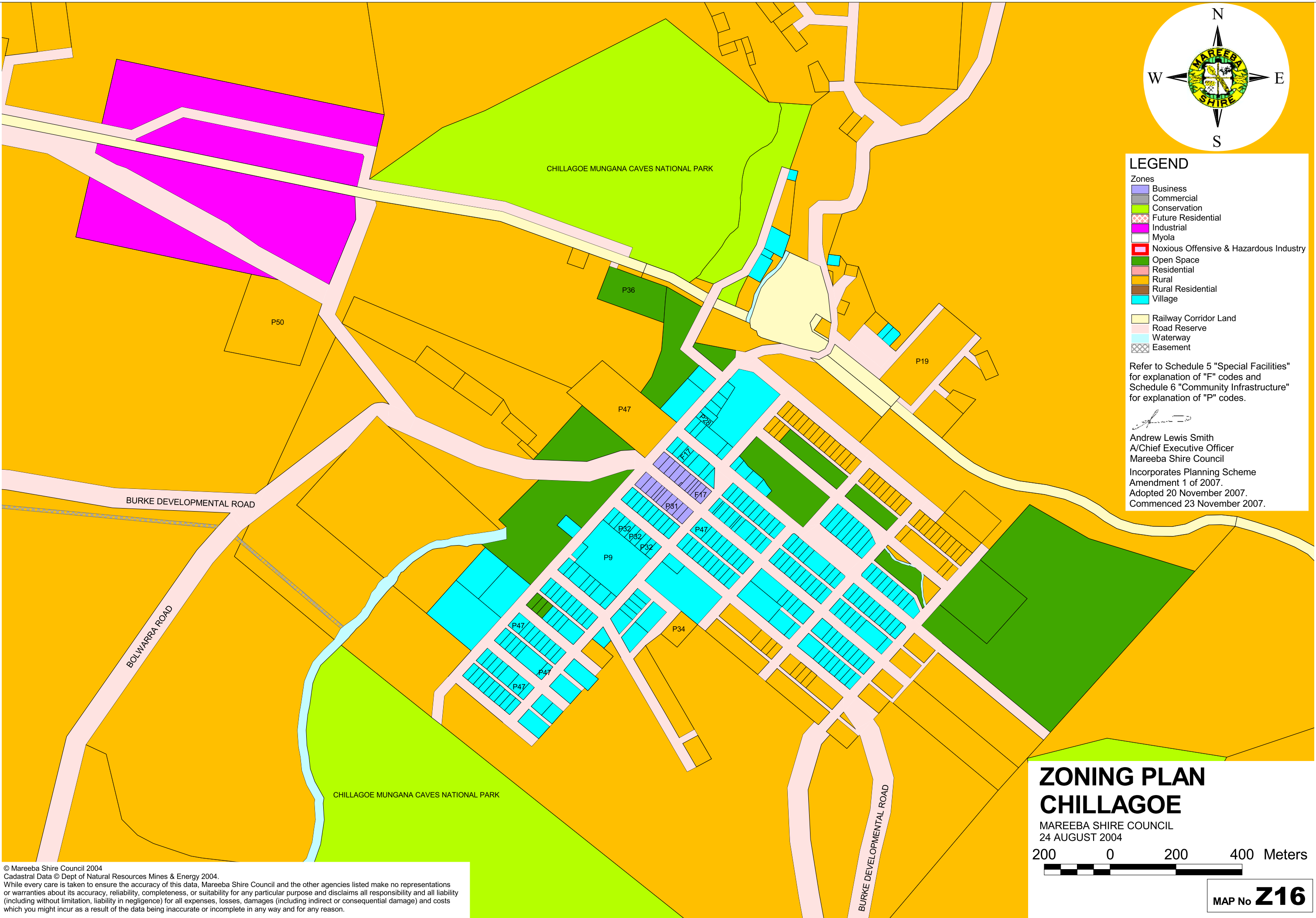


LEGEND

- Zones
- Business
 - Commercial
 - Conservation
 - Future Residential
 - Industrial
 - Myola
 - Noxious Offensive & Hazardous Industry
 - Open Space
 - Residential
 - Rural
 - Rural Residential
 - Village
- Railway Corridor Land
Road Reserve
Waterway
Easement

Refer to Schedule 5 "Special Facilities" for explanation of "F" codes and Schedule 6 "Community Infrastructure" for explanation of "P" codes.

Andrew Lewis Smith
Andrew Lewis Smith
A/Chief Executive Officer
Mareeba Shire Council
Incorporates Planning Scheme
Amendment 1 of 2007.
Adopted 20 November 2007.
Commenced 23 November 2007.



© Mareeba Shire Council 2004
Cadastral Data © Dept of Natural Resources Mines & Energy 2004.
While every care is taken to ensure the accuracy of this data, Mareeba Shire Council and the other agencies listed make no representations or warranties about its accuracy, reliability, completeness, or suitability for any particular purpose and disclaims all responsibility and all liability (including without limitation, liability in negligence) for all expenses, losses, damages (including indirect or consequential damage) and costs which you might incur as a result of the data being inaccurate or incomplete in any way and for any reason.

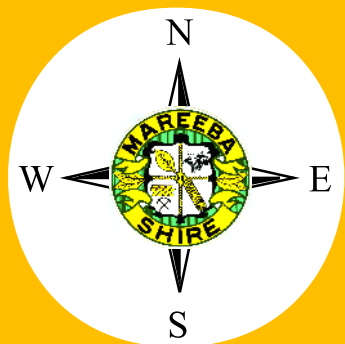
ZONING PLAN CHILLAGOE

MAREEBA SHIRE COUNCIL
24 AUGUST 2004

200 0 200 400 Meters

MAP No **Z16**

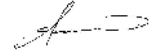
© Mareeba Shire Council 2004
Cadastral Data © Dept of Natural Resources Mines & Energy 2004.
While every care is taken to ensure the accuracy of this data, Mareeba Shire Council and the other agencies listed make no representations or warranties about its accuracy, reliability, completeness, or suitability for any particular purpose and disclaims all responsibility and all liability (including without limitation, liability in negligence) for all expenses, losses, damages (including indirect or consequential damage) and costs which you might incur as a result of the data being inaccurate or incomplete in any way and for any reason.



LEGEND

- Zones
- Business
 - Commercial
 - Conservation
 - Future Residential
 - Industrial
 - Myola
 - Noxious Offensive & Hazardous Industry
 - Open Space
 - Residential
 - Rural
 - Rural Residential
 - Village
- Railway Corridor Land
Road Reserve
Waterway
Easement

Refer to Schedule 5 "Special Facilities" for explanation of "F" codes and Schedule 6 "Community Infrastructure" for explanation of "P" codes.

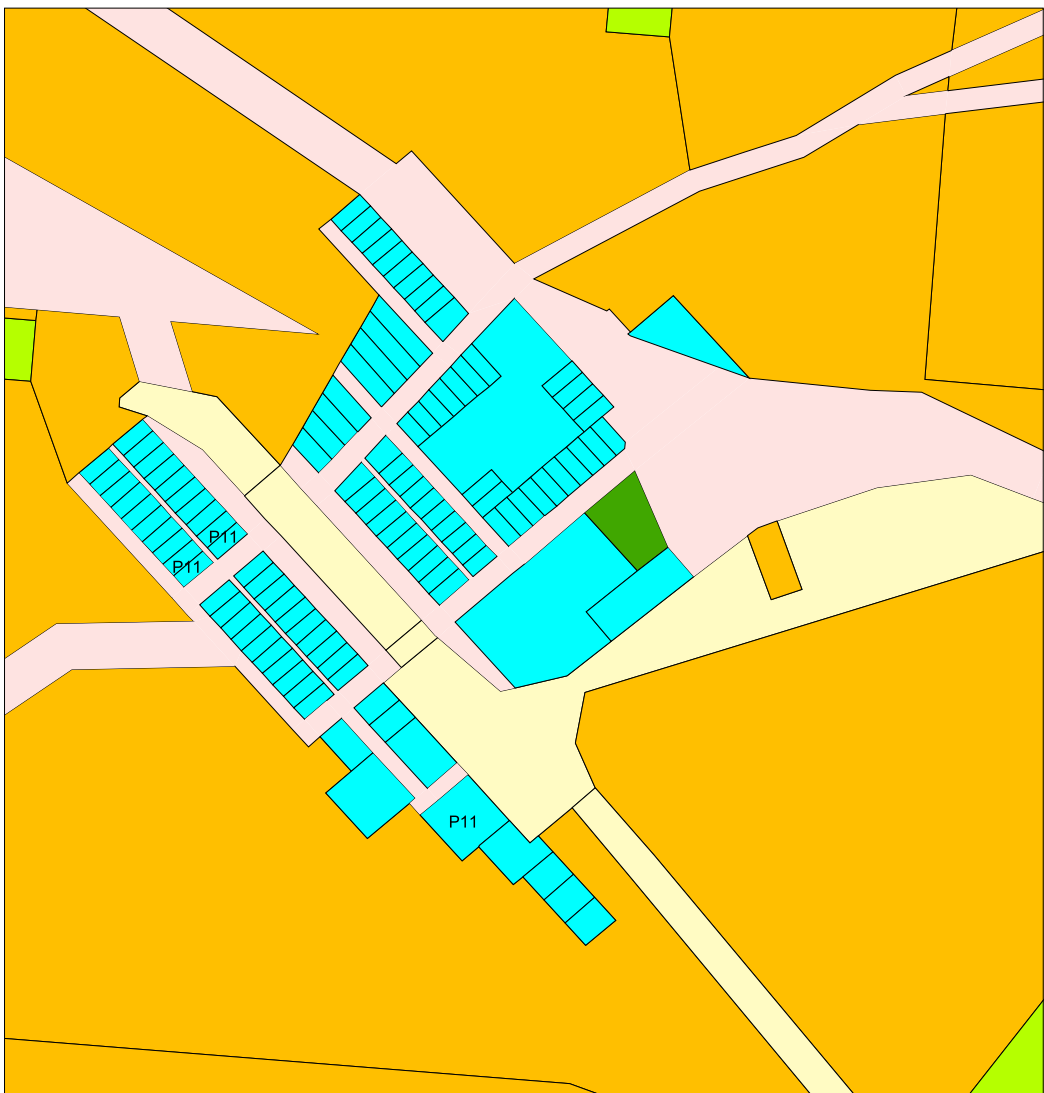

Andrew Lewis Smith
A/Chief Executive Officer
Mareeba Shire Council
Incorporates Planning Scheme Amendment 1 of 2007.
Adopted 20 November 2007.
Commenced 23 November 2007.

ZONING PLAN CHILLAGOE DISTRICT

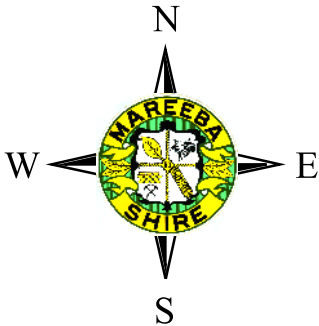
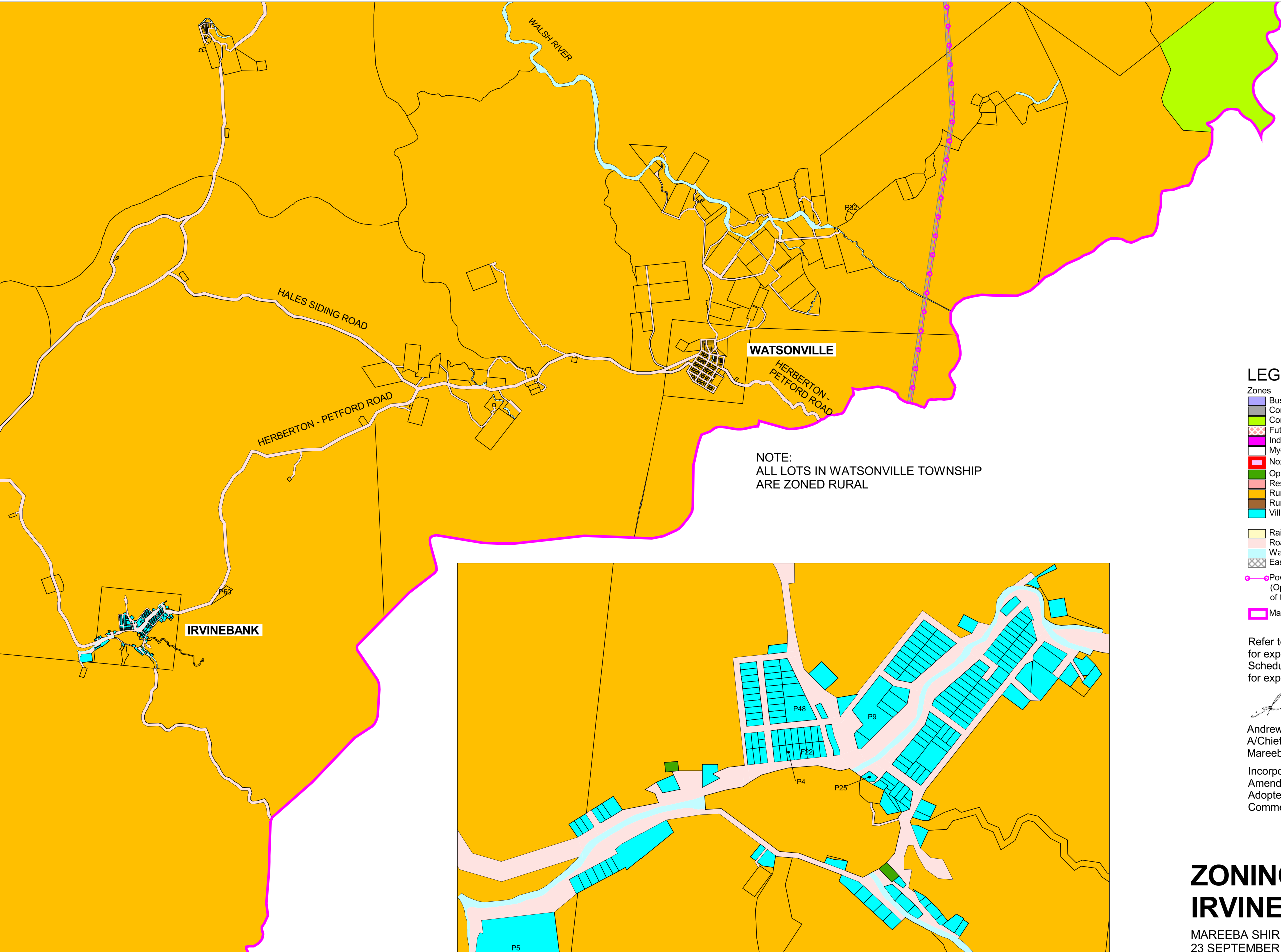
MAREEBA SHIRE COUNCIL
11 AUGUST 2004

1000 0 1000 2000 3000 4000 Meters

MAP No **Z17**



INSET - MUNGANA TOWNSHIP



LEGEND

- Zones
- Business
 - Commercial
 - Conservation
 - Future Residential
 - Industrial
 - Myola
 - Noxious Offensive & Hazardous Industry
 - Open Space
 - Residential
 - Rural
 - Rural Residential
 - Village
- Railway Corridor Land
- Road Reserve
- Waterway
- Easement
- Powerlink Transmission Lines (132kV)
(Operating works for the purposes of the Electricity Act)
- Mareeba Shire Boundary

Refer to Schedule 5 "Special Facilities" for explanation of "F" codes and Schedule 6 "Community Infrastructure" for explanation of "P" codes.

Andrew Lewis Smith
A/Chief Executive Officer
Mareeba Shire Council

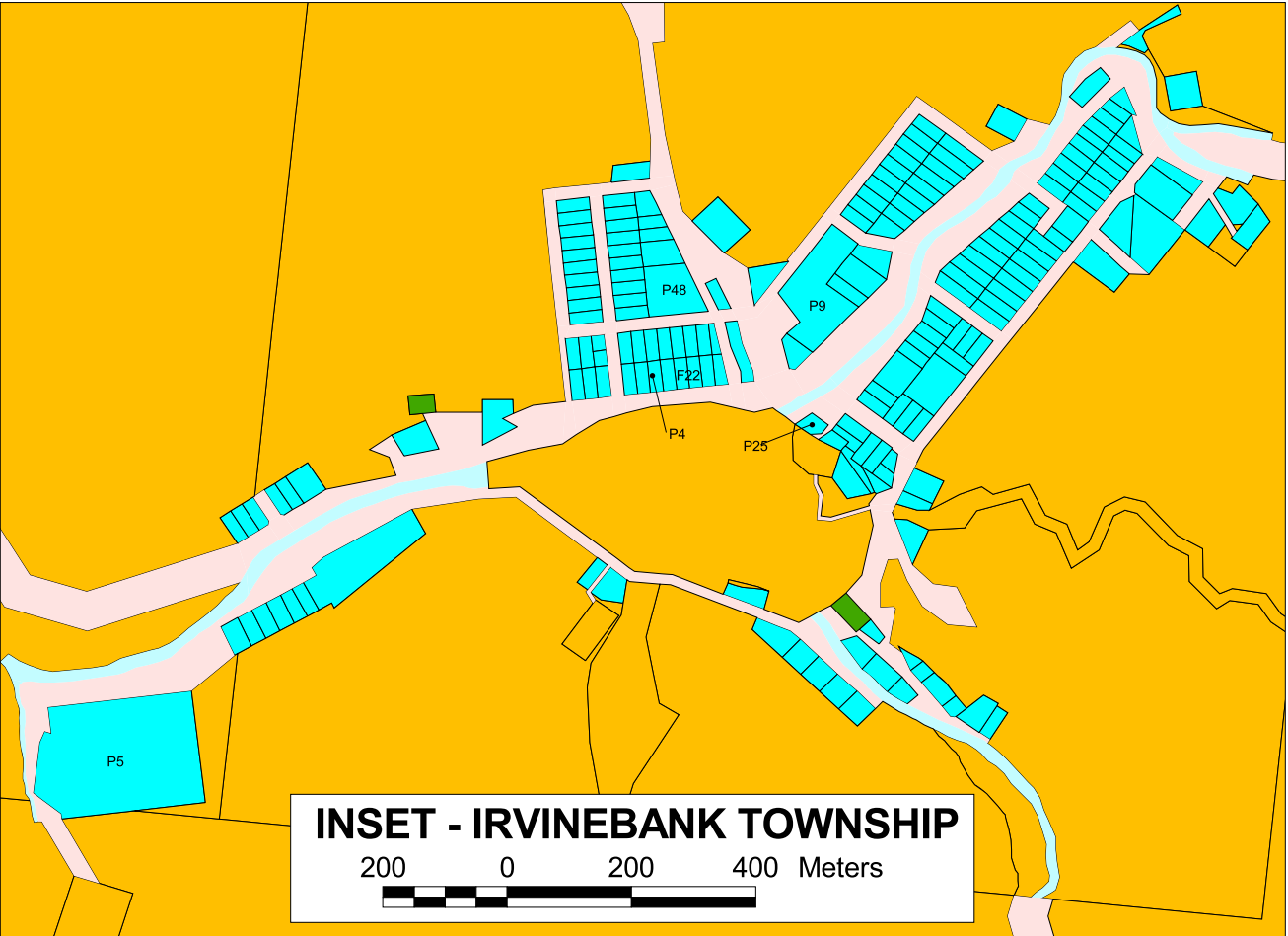
Incorporates Planning Scheme
Amendment 1 of 2007.
Adopted 20 November 2007.
Commenced 23 November 2007.

ZONING PLAN IRVINEBANK DISTRICT

MAREEBA SHIRE COUNCIL
23 SEPTEMBER 2004



MAP No **Z18**



INSET - IRVINEBANK TOWNSHIP



© Mareeba Shire Council 2004
Cadastral Data © Dept of Natural Resources Mines & Energy 2004.
Powerlink Transmission Lines data © Powerlink Queensland 2004.
While every care is taken to ensure the accuracy of this data,
Mareeba Shire Council and the other agencies listed make no representations
or warranties about its accuracy, reliability, completeness, or suitability for any
particular purpose and disclaims all responsibility and all liability (including
without limitation, liability in negligence) for all expenses, losses, damages
(including indirect or consequential damage) and costs which you might incur as
a result of the data being inaccurate or incomplete in any way and for any reason.