

## LEGEND

### Precincts

- A Town Centre Core
- B Town Centre Fringe
- C Noxious and Hazardous Industry
- D Industrial Park
- E Stable
- F Mareeba Airport
- G Mareeba Northern Expansion
- H Mareeba North-eastern Expansion
- I Mareeba South-eastern Expansion
- J Mareeba South-western Expansion

### Other Elements

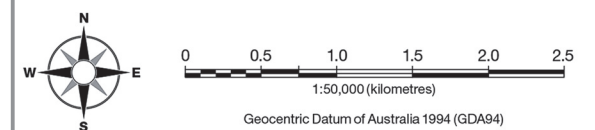
- Local Plan Boundary
- State Controlled Road
- Local Road
- Cadastre
- Watercourse

### Information

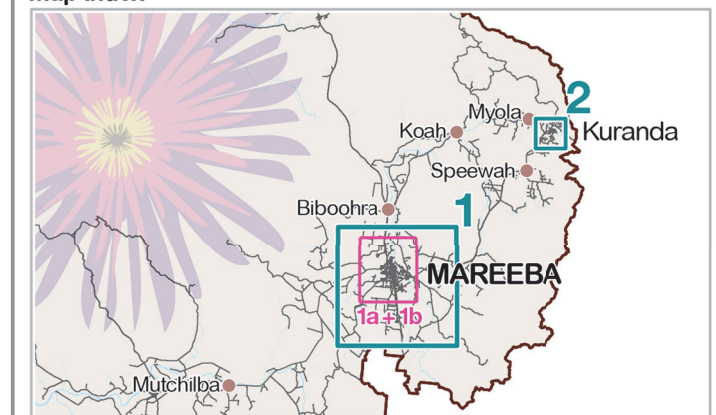
Whilst every care is taken to ensure the accuracy of this product, neither the Mareeba Shire Council or the State of Queensland make any representations or warranties about its accuracy, reliability, completeness or suitability for any particular purpose and disclaims all responsibility and all liability (including without limitation, liability in negligence) for all expenses, losses, damages (including indirect or consequential damage) and costs that may occur as a result of the product being inaccurate or incomplete in any way or for any reason.

All data depicted on this map has been sourced from either the Mareeba Shire Council or the State of Queensland from the latest datasets available at the time of map compilation.

Map compilation date: August 2015.  
Crown & Council Copyright Reserved.

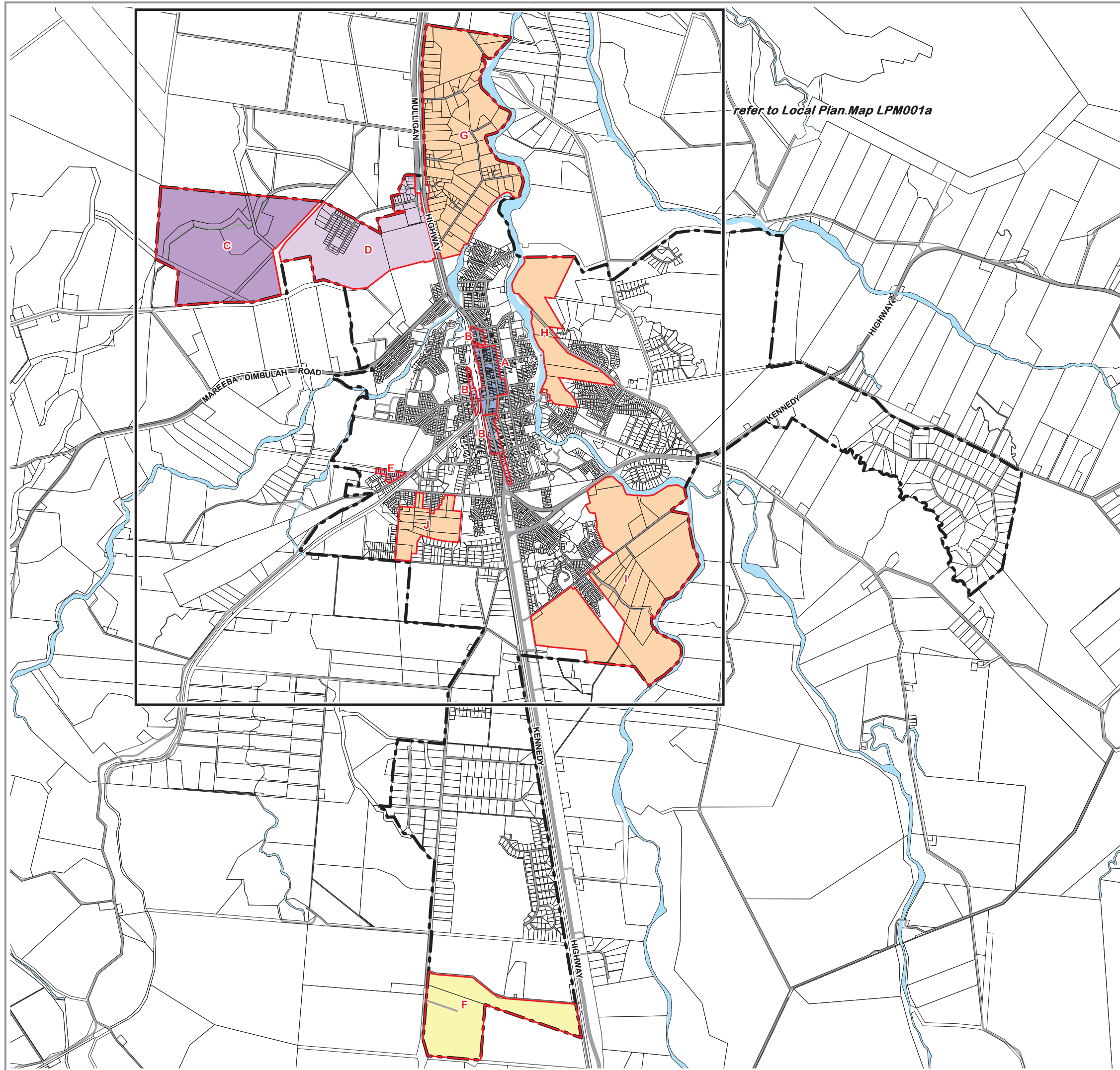


### Map Index



# Mareeba Local Plan - Precincts Map

LOCAL PLAN MAP - LPM001





## LEGEND

### Precincts

- A Town Centre Core
- B Town Centre Fringe
- C Noxious and Hazardous Industry
- D Industrial Park
- E Stable
- F Mareeba Airport
- G Mareeba Northern Expansion
- H Mareeba North-eastern Expansion
- I Mareeba South-eastern Expansion
- J Mareeba South-western Expansion

### Other Elements

- Local Plan Boundary
- State Controlled Road
- Local Road
- Cadastre
- Watercourse

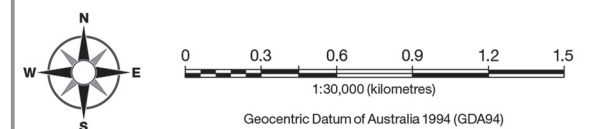
### Information

Whilst every care is taken to ensure the accuracy of this product, neither the Mareeba Shire Council or the State of Queensland make any representations or warranties about its accuracy, reliability, completeness or suitability for any particular purpose and disclaims all responsibility and all liability (including without limitation, liability in negligence) for all expenses, losses, damages (including indirect or consequential damage) and costs that may occur as a result of the product being inaccurate or incomplete in any way or for any reason.

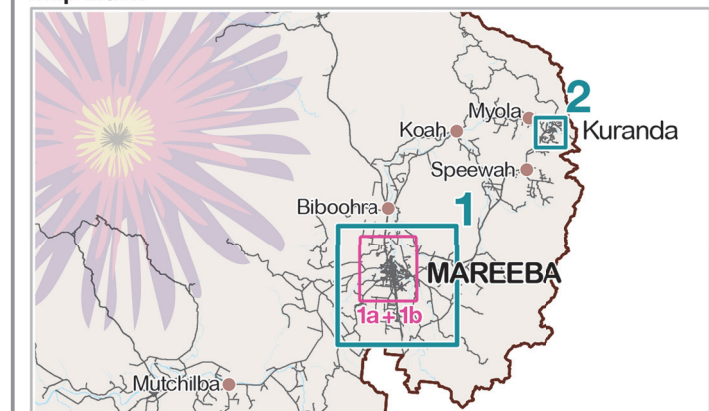
All data depicted on this map has been sourced from either the Mareeba Shire Council or the State of Queensland from the latest datasets available at the time of map compilation.

Map compilation date: August 2015.

Crown & Council Copyright Reserved.

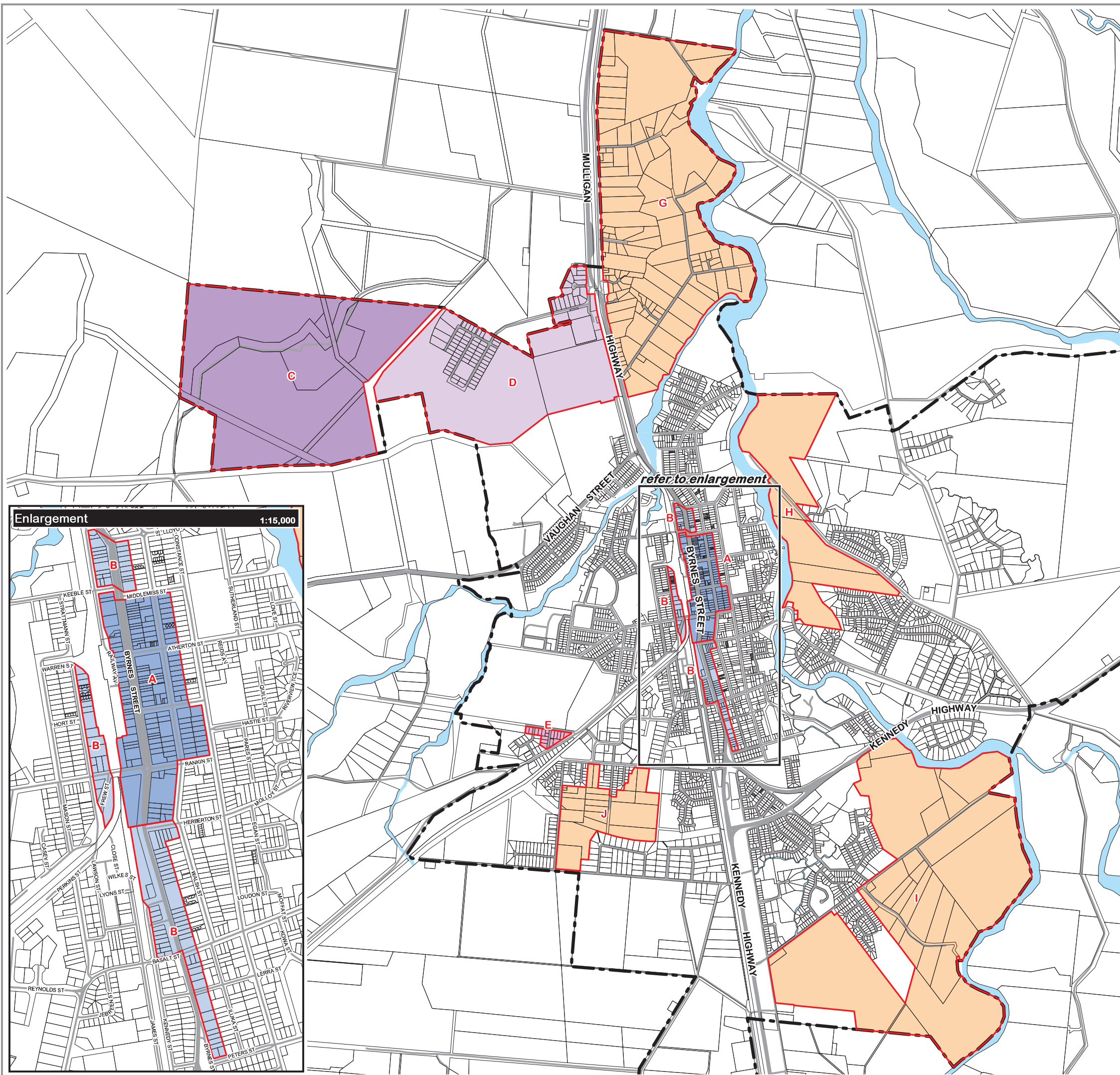


### Map Index



# Mareeba Local Plan - Precincts Map (enlargements)

LOCAL PLAN MAP - LPM001a





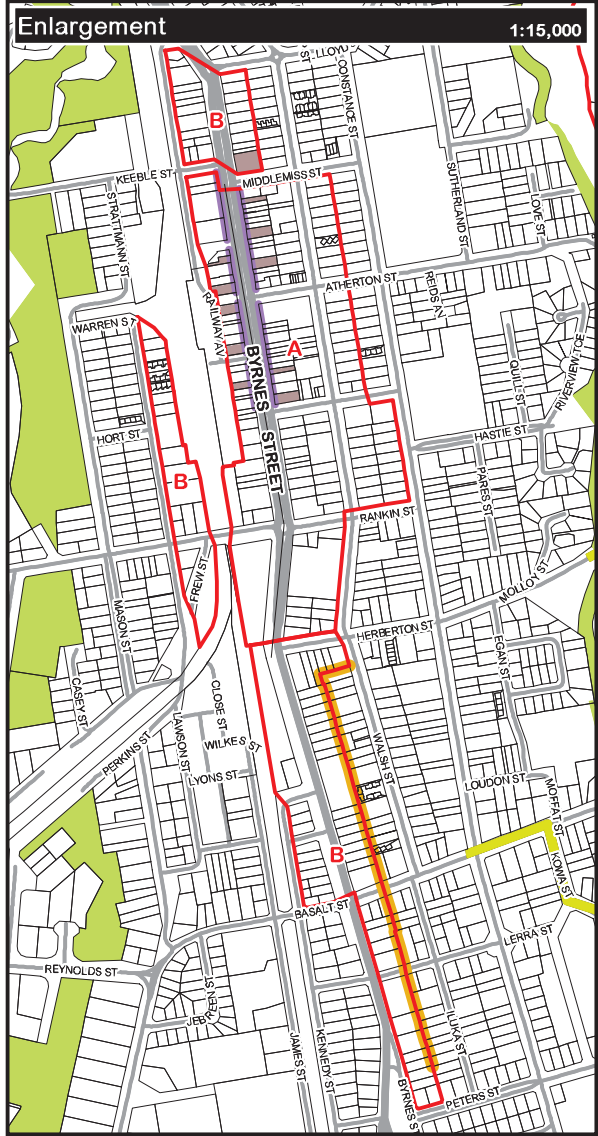
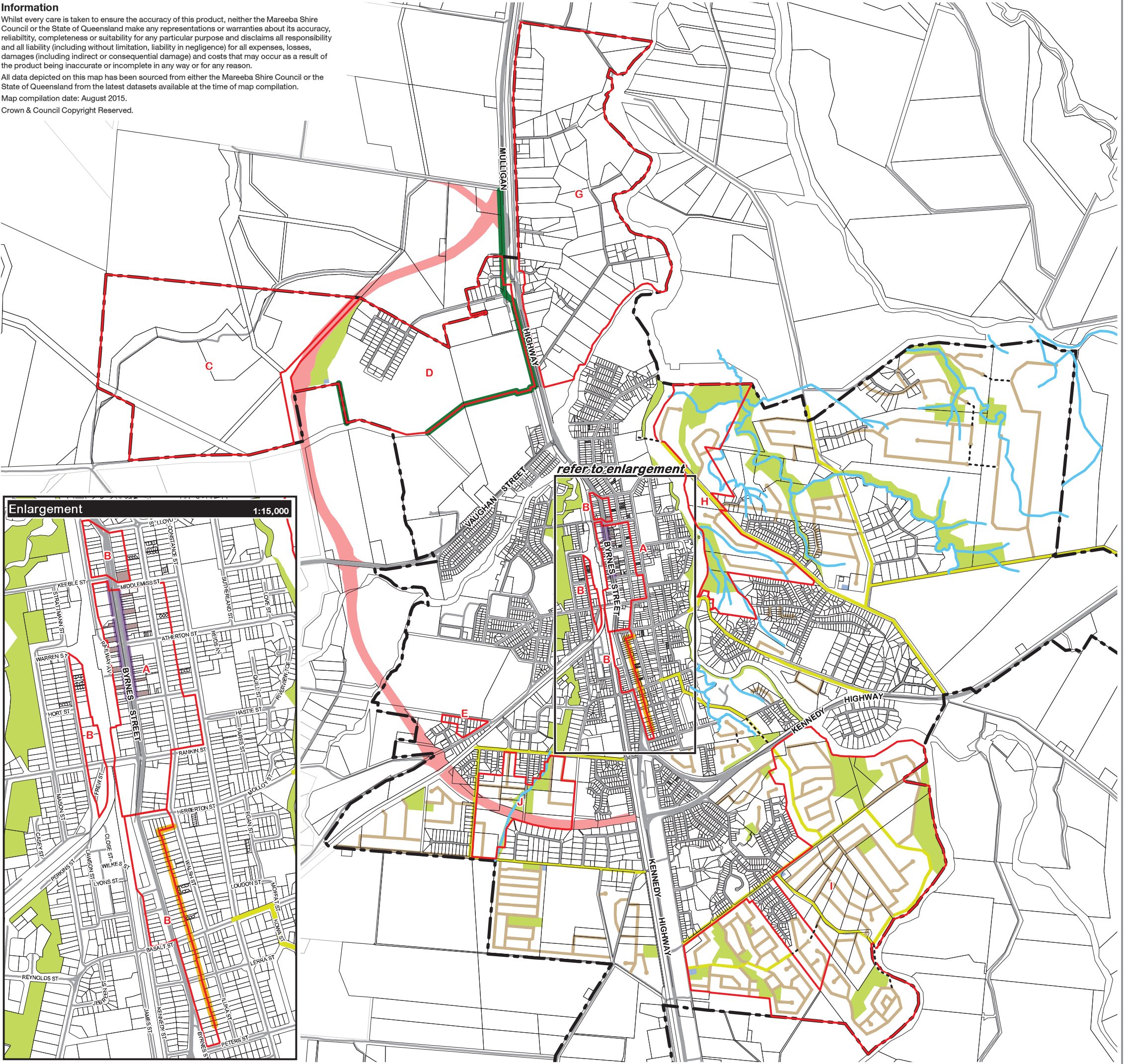
Information

Whilst every care is taken to ensure the accuracy of this product, neither the Mareeba Shire Council or the State of Queensland make any representations or warranties about its accuracy, reliability, completeness or suitability for any particular purpose and disclaims all responsibility and all liability (including without limitation, liability in negligence) for all expenses, losses, damages (including indirect or consequential damage) and costs that may occur as a result of the product being inaccurate or incomplete in any way or for any reason.

All data depicted on this map has been sourced from either the Mareeba Shire Council or the State of Queensland from the latest datasets available at the time of map compilation.

Map compilation date: August 2015.

Crown & Council Copyright Reserved.



LEGEND

Elements

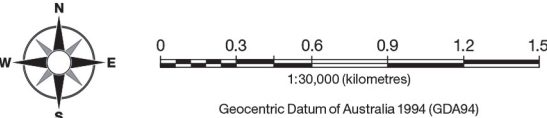
- Open Space
- Retail
- Vegetated Buffer
- Building Facade to be Retained
- Mareeba Bypass
- Indicative Collector Road
- Indicative Minor Road
- Possible Connections
- Byrnes Street Core
- Town Centre Fringe 6 metre Setback
- Waterway Corridor

Precincts

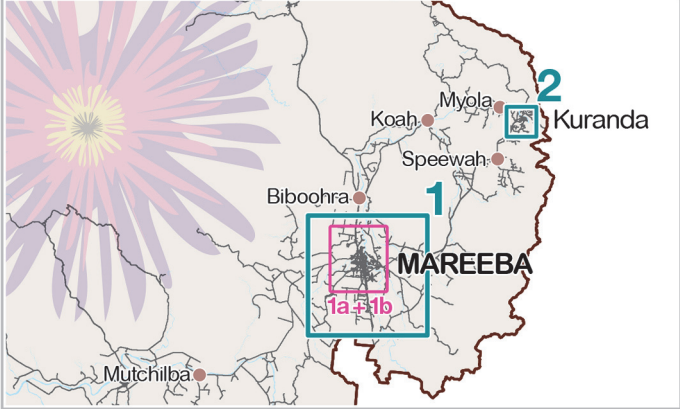
- A Town Centre Core
- B Town Centre Fringe
- C Noxious and Hazardous Industry
- D Industrial Park
- E Stable
- F Mareeba Airport
- G Mareeba Northern Expansion
- H Mareeba North-eastern Expansion
- I Mareeba South-eastern Expansion
- J Mareeba South-western Expansion

Other Elements

- Local Plan Boundary
- State Controlled Road
- Local Road
- Cadastre



Map Index



Mareeba Local Plan - Elements Map

LOCAL PLAN MAP - LPM001b





## LEGEND




## Precincts

- |          |               |
|----------|---------------|
| <b>A</b> | Village Heart |
| <b>B</b> | Village Frame |
| <b>C</b> | Green Belt    |

## Elements

- 
- Point of Arrival

## Other Elements

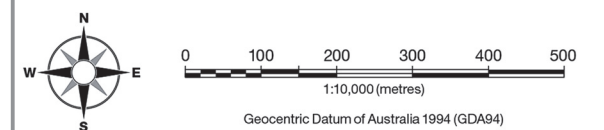
-  Local Plan Boundary
-  State Controlled Road
-  Local Road
-  Cadastre
-  Watercourse

## Information

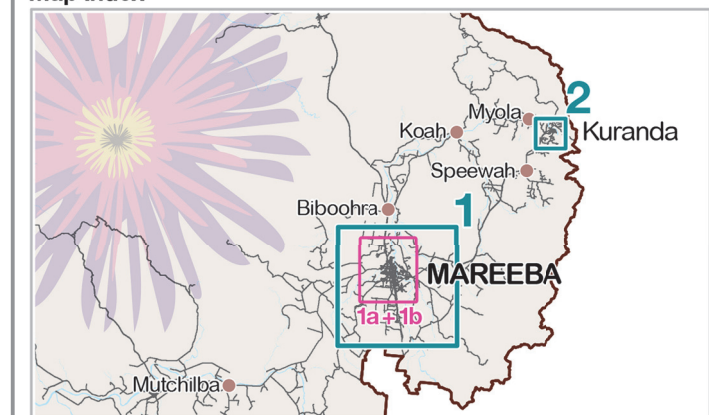
Whilst every care is taken to ensure the accuracy of this product, neither the Mareeba Shire Council or the State of Queensland make any representations or warranties about its accuracy, reliability, completeness or suitability for any particular purpose and disclaims all responsibility and all liability (including without limitation, liability in negligence) for all expenses, losses, damages (including indirect or consequential damage) and costs that may occur as a result of the product being inaccurate or incomplete in any way or for any reason.

All data depicted on this map has been sourced from either the Mareeba Shire Council or the State of Queensland from the latest datasets available at the time of map compilation.

Map compilation date: August 2015.  
Crown & Council Copyright Reserved.



## Map Index



# Kuranda Local Plan - Precincts Map

**LOCAL PLAN MAP - LPM002**