




Plans For Trunk Infrastructure
Mareeba, Far-north
Parks and Community Land

 Urban Footprint

 Property Boundary

 Ultimate Catchment

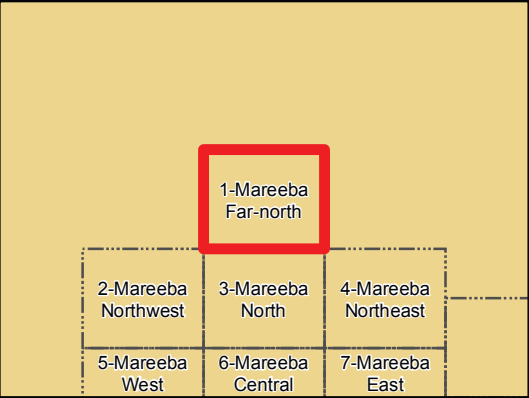
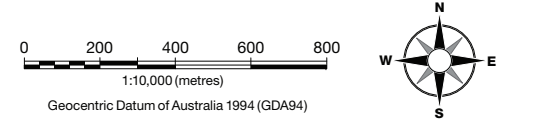


Information

Whilst every care is taken to ensure the accuracy of this product, neither the Mareeba Shire Council or the State of Queensland make any representations or warranties about its accuracy, reliability, completeness or suitability for any particular purpose and disclaims all responsibility and all liability (including without limitation, liability in negligence) for all expenses, losses, damages (including indirect or consequential damage) and costs that may occur as a result of the product being inaccurate or incomplete in any way or for any reason.

This mapping series was prepared by the former Tablelands Regional Council. Maps 14-31 and maps 39-47 relate to the new Tablelands Regional Local Government Area and are not applicable to the Mareeba Shire Local Government Area. Tablelands Regional Council should be consulted for land within the area covered by maps 14-31 and maps 39-47.

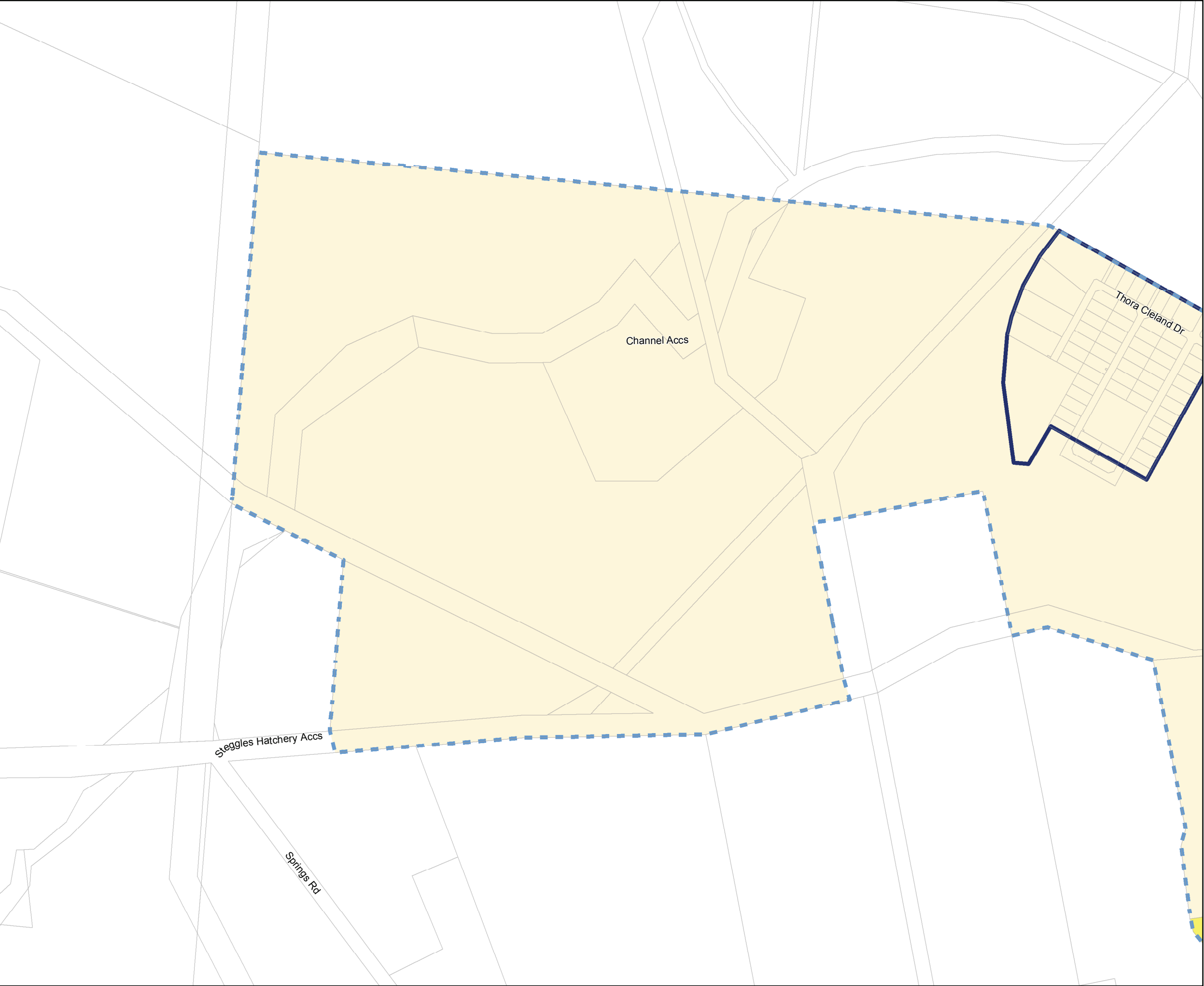
Crown & Council Copyright Reserved.



Planning Scheme Map
Parks-PFT11 of 47

Plans For Trunk Infrastructure
Mareeba, Northwest
Parks and Community Land

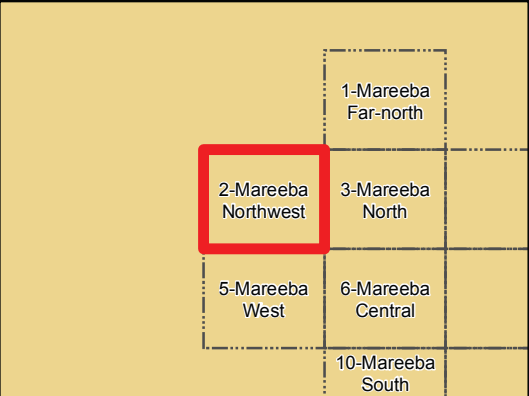
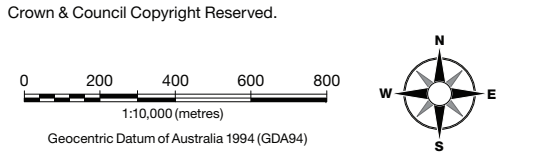
- PIA Boundary
- Urban Footprint
- Property Boundary
- Ultimate Catchment
- Community Land



Information

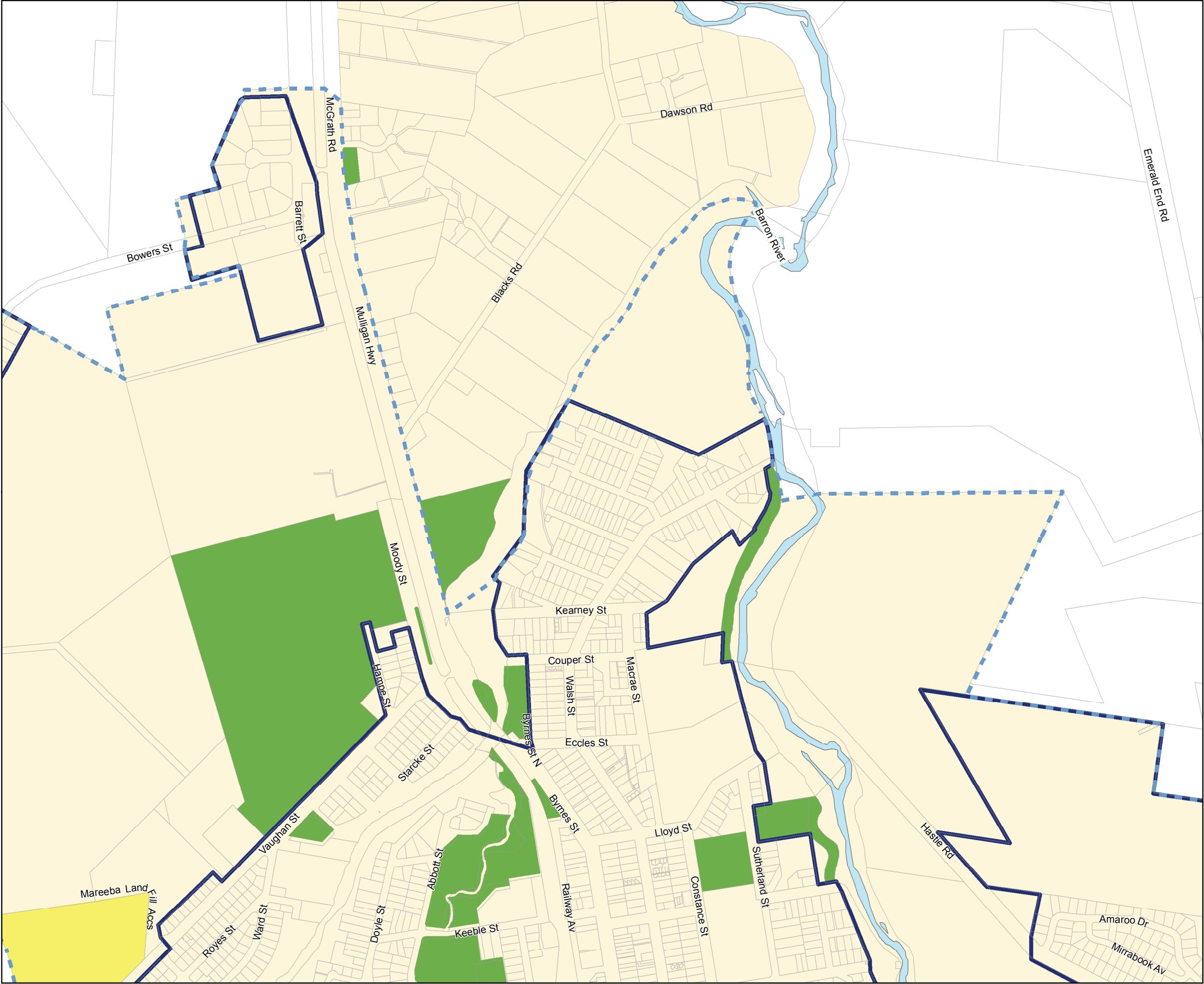
Whilst every care is taken to ensure the accuracy of this product, neither the Mareeba Shire Council or the State of Queensland make any representations or warranties about its accuracy, reliability, completeness or suitability for any particular purpose and disclaims all responsibility and all liability (including without limitation, liability in negligence) for all expenses, losses, damages (including indirect or consequential damage) and costs that may occur as a result of the product being inaccurate or incomplete in any way or for any reason.

This mapping series was prepared by the former Tablelands Regional Council. Maps 14-31 and maps 39-47 relate to the new Tablelands Regional Local Government Area and are not applicable to the Mareeba Shire Local Government Area. Tablelands Regional Council should be consulted for land within the area covered by maps 14-31 and maps 39-47.



Plans For Trunk Infrastructure
Mareeba, North
Parks and Community Land

- PIA Boundary
- Urban Footprint
- Property Boundary
- Ultimate Catchment
- Park
- Community Land

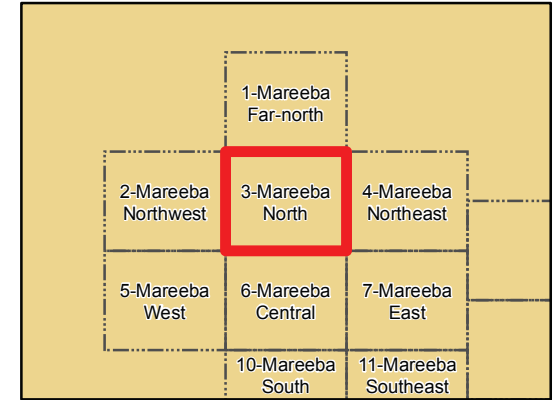
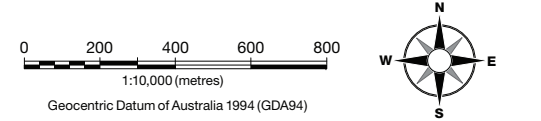


Information

Whilst every care is taken to ensure the accuracy of this product, neither the Mareeba Shire Council or the State of Queensland make any representations or warranties about its accuracy, reliability, completeness or suitability for any particular purpose and disclaims all responsibility and all liability (including without limitation, liability in negligence) for all expenses, losses, damages (including indirect or consequential damage) and costs that may occur as a result of the product being inaccurate or incomplete in any way or for any reason.

This mapping series was prepared by the former Tablelands Regional Council. Maps 14-31 and maps 39-47 relate to the new Tablelands Regional Local Government Area and are not applicable to the Mareeba Shire Local Government Area. Tablelands Regional Council should be consulted for land within the area covered by maps 14-31 and maps 39-47.

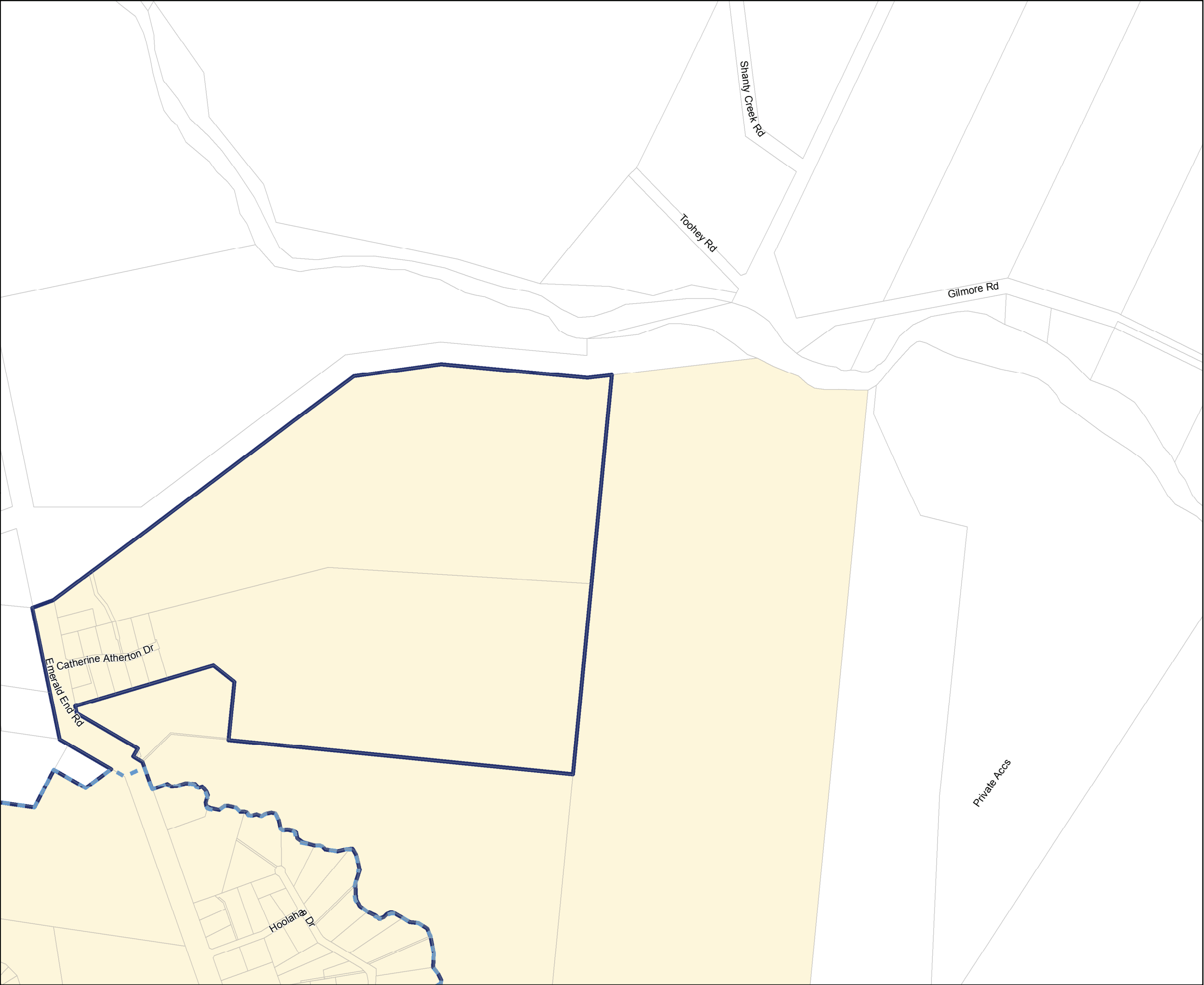
Crown & Council Copyright Reserved.



Planning Scheme Map
Parks-PFTI3 of 47

Plans For Trunk Infrastructure
Mareeba, Northeast
Parks and Community Land

- PIA Boundary
- Urban Footprint
- Property Boundary
- Ultimate Catchment

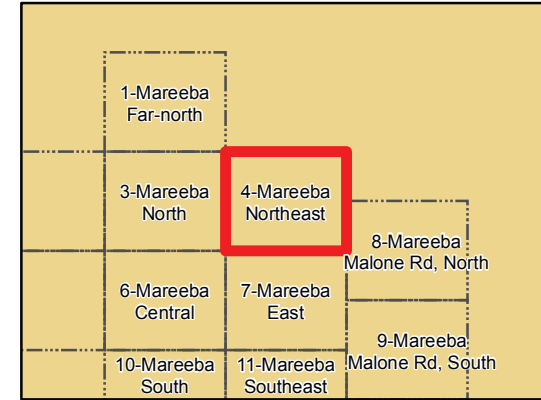
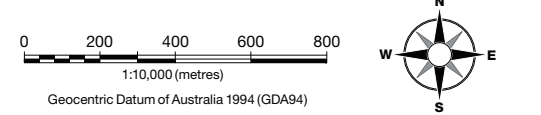


Information

Whilst every care is taken to ensure the accuracy of this product, neither the Mareeba Shire Council or the State of Queensland make any representations or warranties about its accuracy, reliability, completeness or suitability for any particular purpose and disclaims all responsibility and all liability (including without limitation, liability in negligence) for all expenses, losses, damages (including indirect or consequential damage) and costs that may occur as a result of the product being inaccurate or incomplete in any way or for any reason.

This mapping series was prepared by the former Tablelands Regional Council. Maps 14-31 and maps 39-47 relate to the new Tablelands Regional Local Government Area and are not applicable to the Mareeba Shire Local Government Area. Tablelands Regional Council should be consulted for land within the area covered by maps 14-31 and maps 39-47.

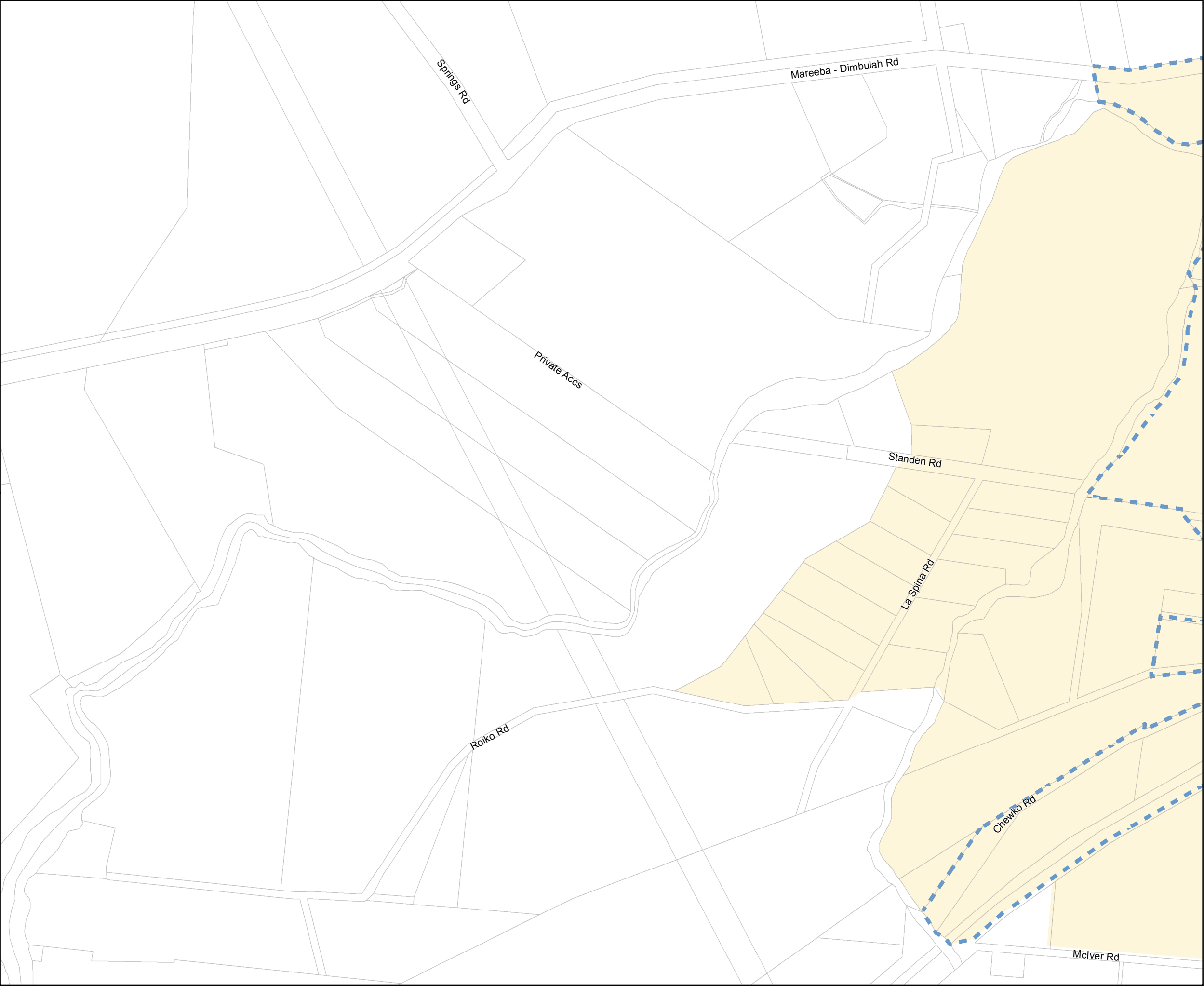
Crown & Council Copyright Reserved.



Planning Scheme Map
Parks-PFTI4 of 47

Plans For Trunk Infrastructure
Mareeba, West
Parks and Community Land

- Urban Footprint
- Property Boundary
- Ultimate Catchment

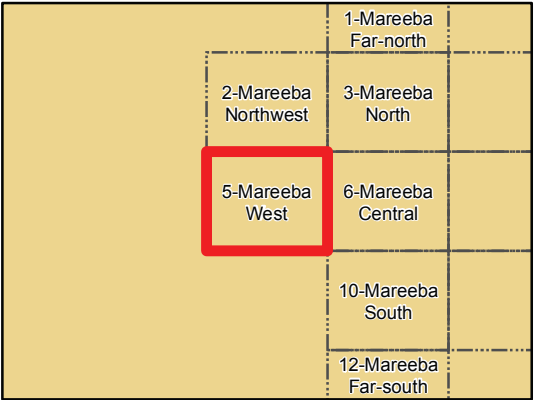
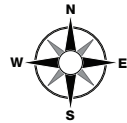
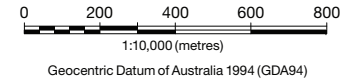


Information

Whilst every care is taken to ensure the accuracy of this product, neither the Mareeba Shire Council or the State of Queensland make any representations or warranties about its accuracy, reliability, completeness or suitability for any particular purpose and disclaims all responsibility and all liability (including without limitation, liability in negligence) for all expenses, losses, damages (including indirect or consequential damage) and costs that may occur as a result of the product being inaccurate or incomplete in any way or for any reason.

This mapping series was prepared by the former Tablelands Regional Council. Maps 14-31 and maps 39-47 relate to the new Tablelands Regional Local Government Area and are not applicable to the Mareeba Shire Local Government Area. Tablelands Regional Council should be consulted for land within the area covered by maps 14-31 and maps 39-47.

Crown & Council Copyright Reserved.



Planning Scheme Map
Parks-PFTI5 of 47

Plans For Trunk Infrastructure
Mareeba, Central
Parks and Community Land

- PIA Boundary
- Urban Footprint
- Property Boundary
- Ultimate Catchment
- Park
- Community Land

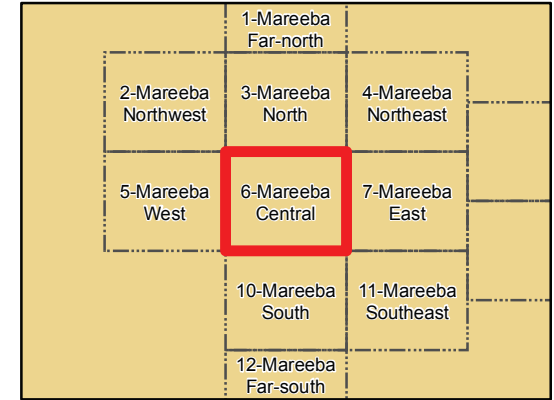
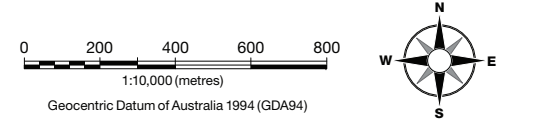


Information

Whilst every care is taken to ensure the accuracy of this product, neither the Mareeba Shire Council or the State of Queensland make any representations or warranties about its accuracy, reliability, completeness or suitability for any particular purpose and disclaims all responsibility and all liability (including without limitation, liability in negligence) for all expenses, losses, damages (including indirect or consequential damage) and costs that may occur as a result of the product being inaccurate or incomplete in any way or for any reason.

This mapping series was prepared by the former Tablelands Regional Council. Maps 14-31 and maps 39-47 relate to the new Tablelands Regional Local Government Area and are not applicable to the Mareeba Shire Local Government Area. Tablelands Regional Council should be consulted for land within the area covered by maps 14-31 and maps 39-47.

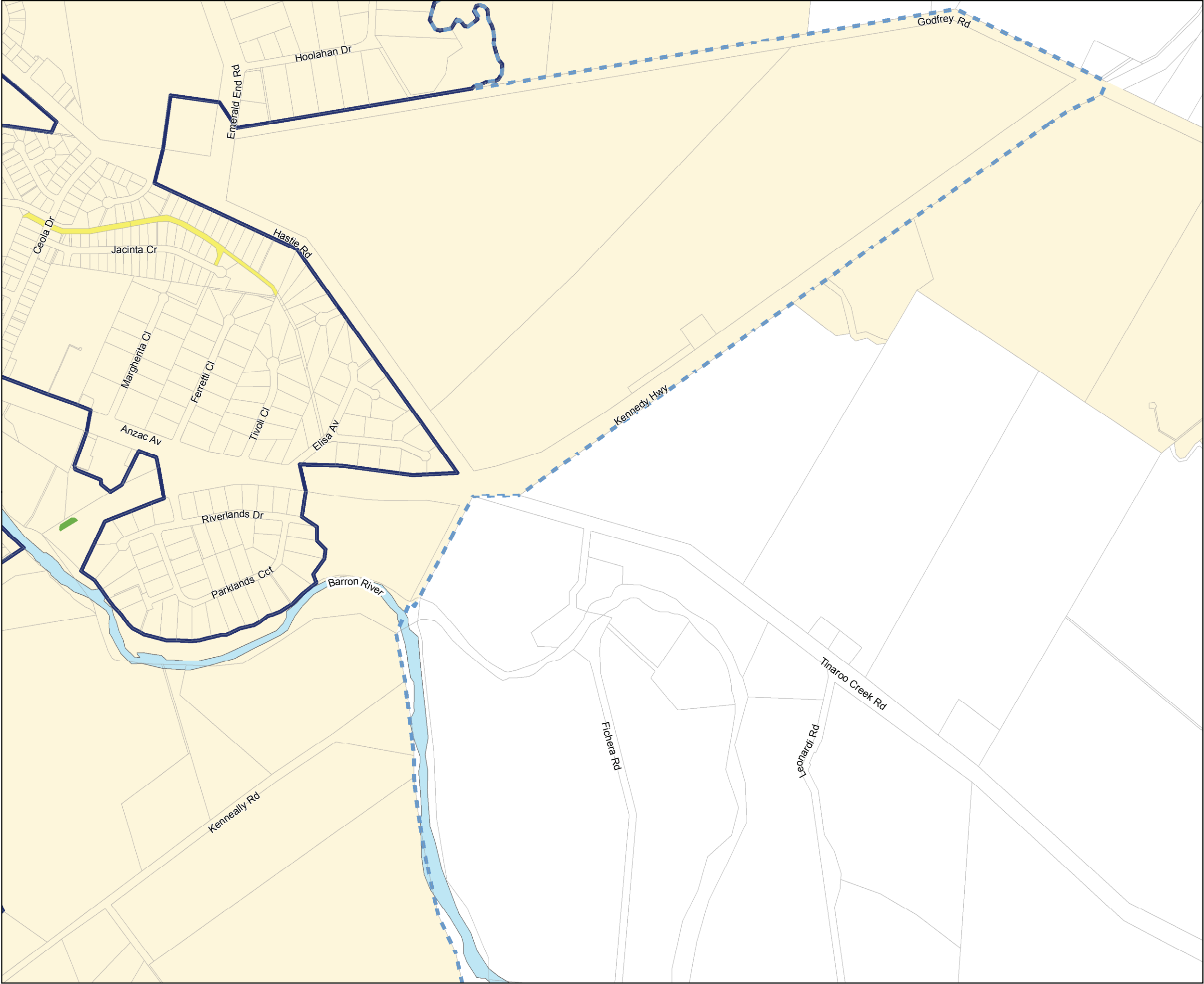
Crown & Council Copyright Reserved.



Planning Scheme Map
Parks-PFTI6 of 47

Plans For Trunk Infrastructure
Mareeba, East
Parks and Community Land

- PIA Boundary
- Urban Footprint
- Property Boundary
- Ultimate Catchment
- Park
- Community Land

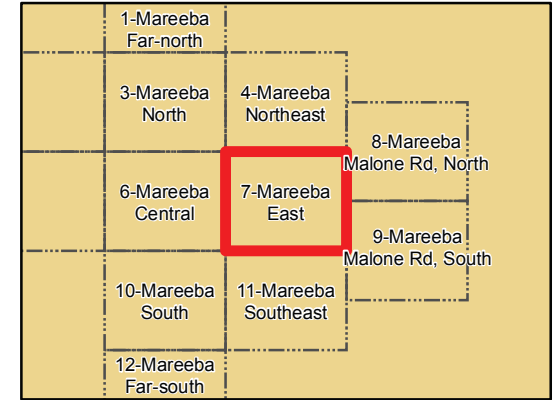
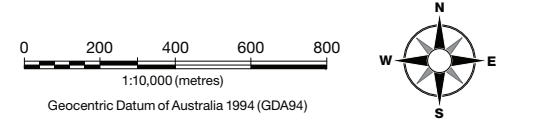


Information

Whilst every care is taken to ensure the accuracy of this product, neither the Mareeba Shire Council or the State of Queensland make any representations or warranties about its accuracy, reliability, completeness or suitability for any particular purpose and disclaims all responsibility and all liability (including without limitation, liability in negligence) for all expenses, losses, damages (including indirect or consequential damage) and costs that may occur as a result of the product being inaccurate or incomplete in any way or for any reason.


This mapping series was prepared by the former Tablelands Regional Council. Maps 14-31 and maps 39-47 relate to the new Tablelands Regional Local Government Area and are not applicable to the Mareeba Shire Local Government Area. Tablelands Regional Council should be consulted for land within the area covered by maps 14-31 and maps 39-47.


Crown & Council Copyright Reserved.




Planning Scheme Map
Parks-PFTI7 of 47

Plans For Trunk Infrastructure
Mareeba, Malone Rd, North
Parks and Community Land

 Urban Footprint

 Property Boundary

 Ultimate Catchment



Information

Whilst every care is taken to ensure the accuracy of this product, neither the Mareeba Shire Council or the State of Queensland make any representations or warranties about its accuracy, reliability, completeness or suitability for any particular purpose and disclaims all responsibility and all liability (including without limitation, liability in negligence) for all expenses, losses, damages (including indirect or consequential damage) and costs that may occur as a result of the product being inaccurate or incomplete in any way or for any reason.

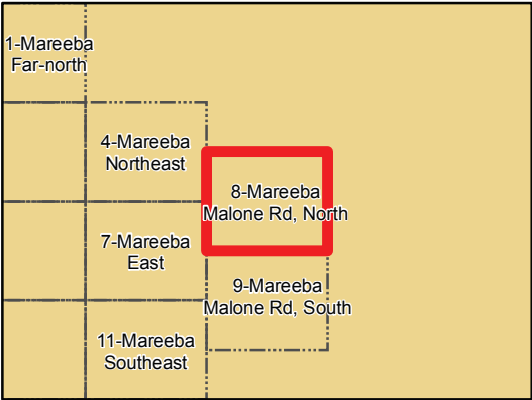
This mapping series was prepared by the former Tablelands Regional Council. Maps 14-31 and maps 39-47 relate to the new Tablelands Regional Local Government Area and are not applicable to the Mareeba Shire Local Government Area. Tablelands Regional Council should be consulted for land within the area covered by maps 14-31 and maps 39-47.

Crown & Council Copyright Reserved.

0200400600800

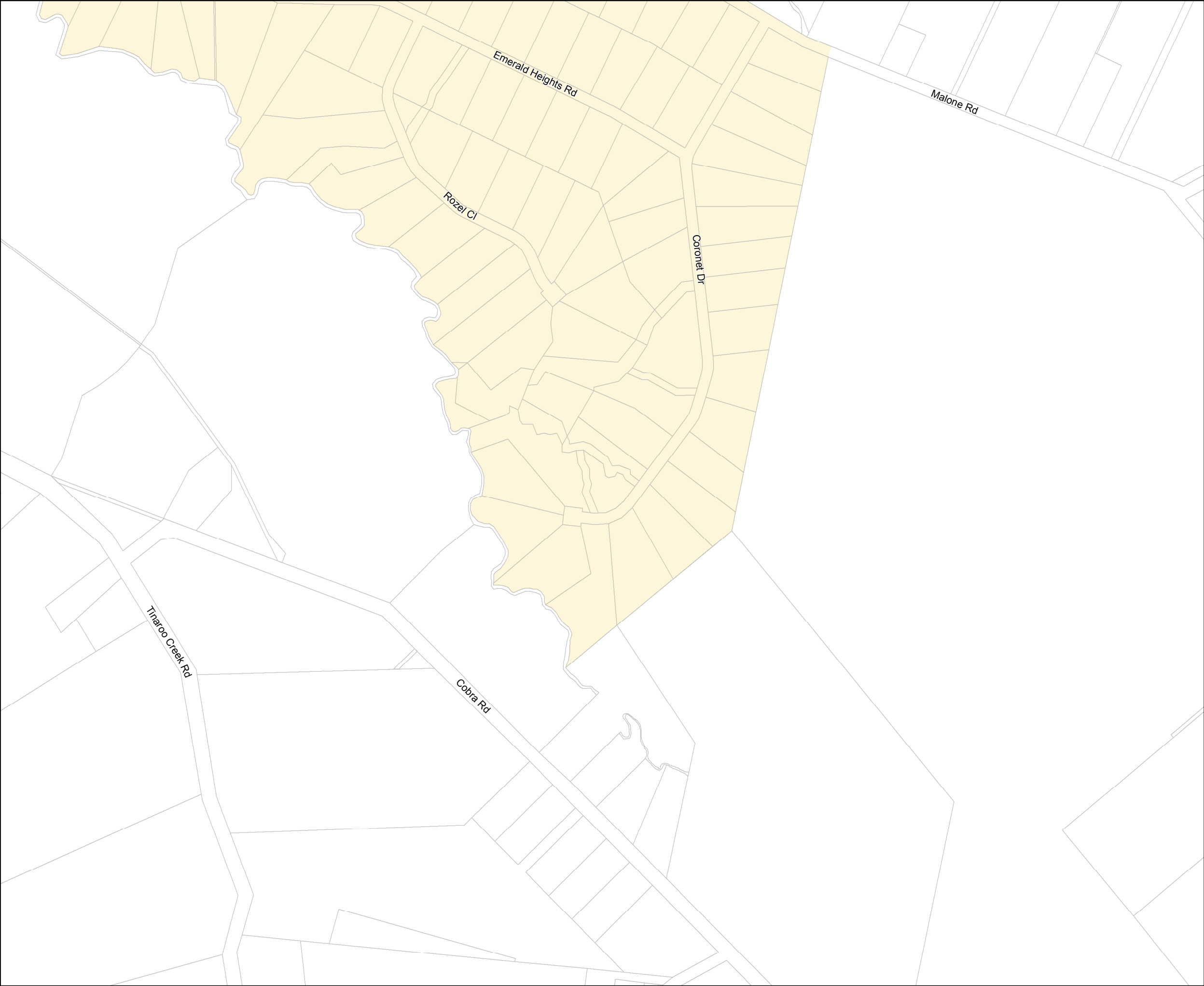
1:10,000 (metres)

Geocentric Datum of Australia 1994 (GDA94)



Plans For Trunk Infrastructure
Mareeba, Malone Rd, South
Parks and Community Land

- Urban Footprint
- Property Boundary
- Ultimate Catchment

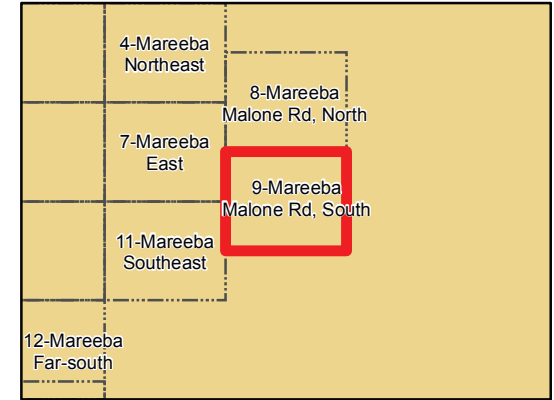
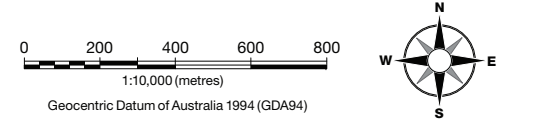


Information

Whilst every care is taken to ensure the accuracy of this product, neither the Mareeba Shire Council or the State of Queensland make any representations or warranties about its accuracy, reliability, completeness or suitability for any particular purpose and disclaims all responsibility and all liability (including without limitation, liability in negligence) for all expenses, losses, damages (including indirect or consequential damage) and costs that may occur as a result of the product being inaccurate or incomplete in any way or for any reason.

This mapping series was prepared by the former Tablelands Regional Council. Maps 14-31 and maps 39-47 relate to the new Tablelands Regional Local Government Area and are not applicable to the Mareeba Shire Local Government Area. Tablelands Regional Council should be consulted for land within the area covered by maps 14-31 and maps 39-47.

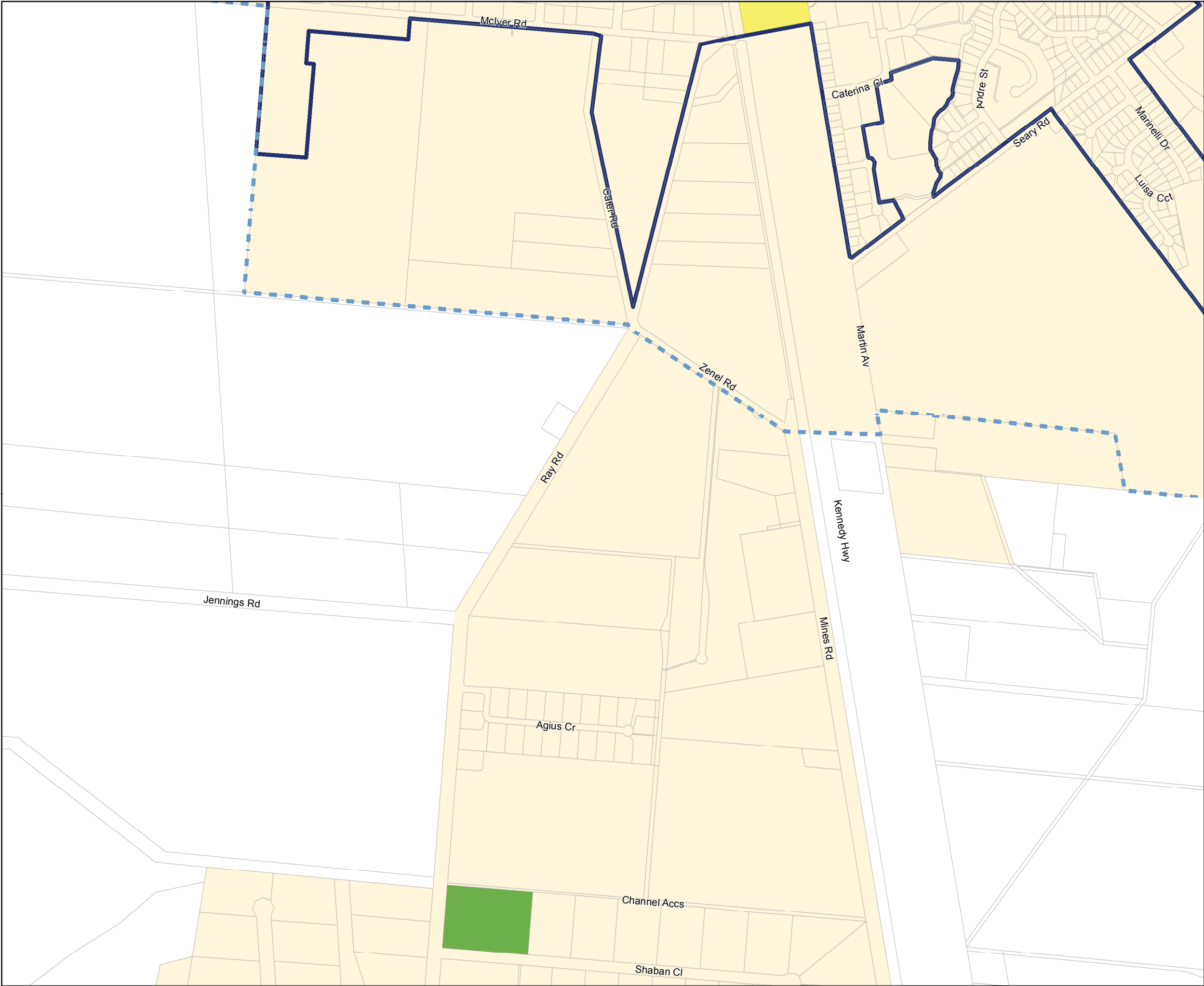
Crown & Council Copyright Reserved.



Planning Scheme Map
Parks-PFTI9 of 47

Plans For Trunk Infrastructure
Mareeba, South
Parks and Community Land

- PIA Boundary
- Urban Footprint
- Property Boundary
- Ultimate Catchment
- Park
- Community Land

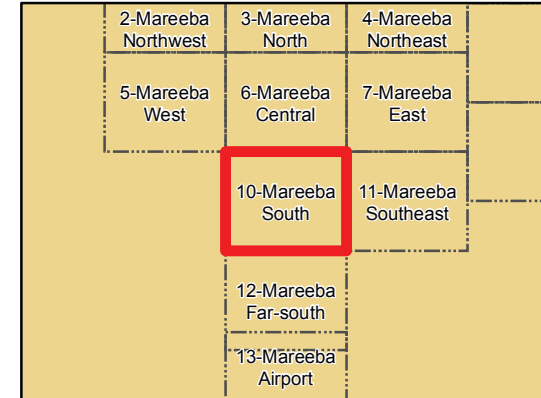
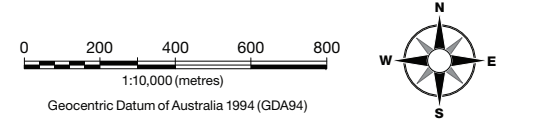


Information

Whilst every care is taken to ensure the accuracy of this product, neither the Mareeba Shire Council or the State of Queensland make any representations or warranties about its accuracy, reliability, completeness or suitability for any particular purpose and disclaims all responsibility and all liability (including without limitation, liability in negligence) for all expenses, losses, damages (including indirect or consequential damage) and costs that may occur as a result of the product being inaccurate or incomplete in any way or for any reason.

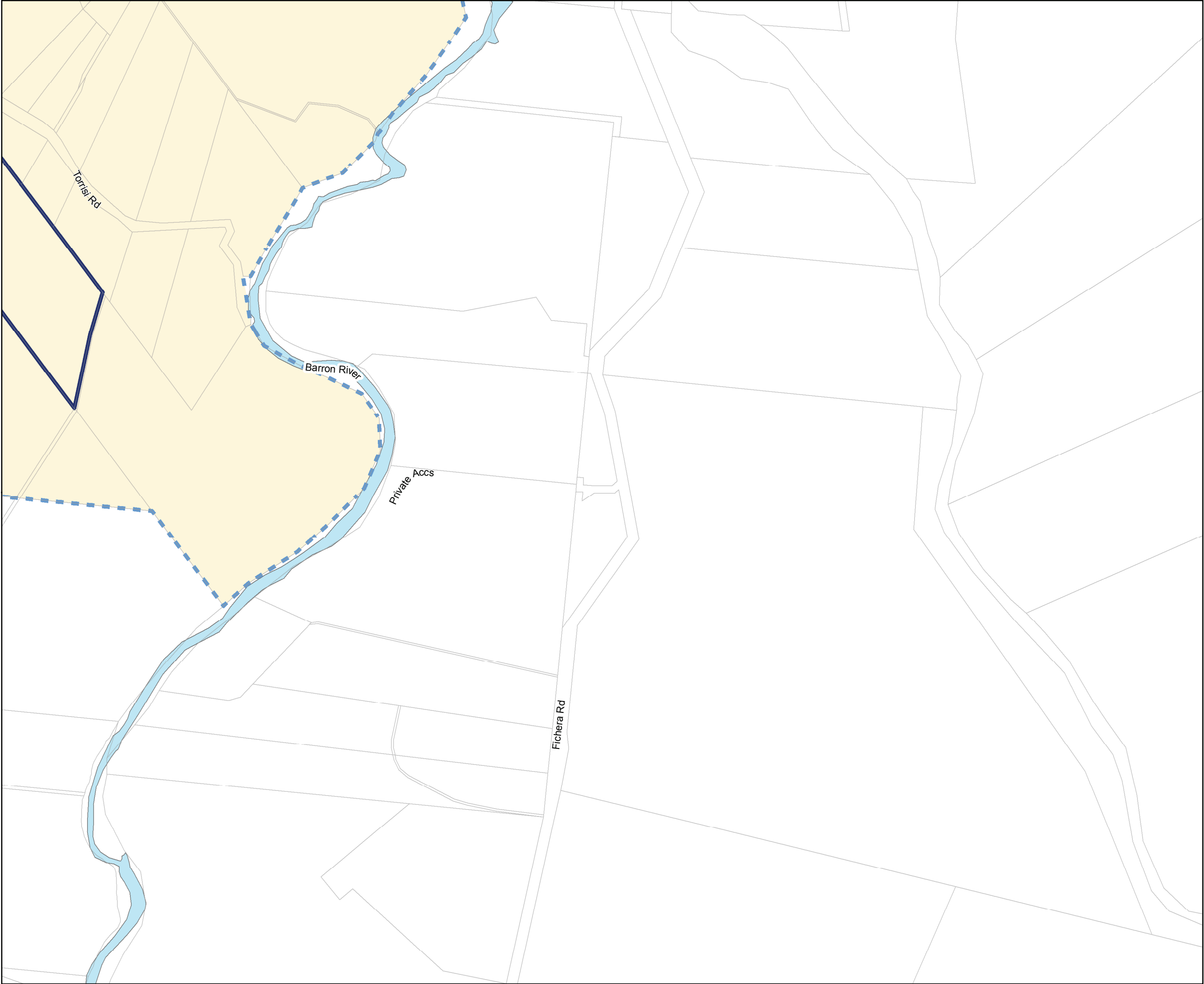
This mapping series was prepared by the former Tablelands Regional Council. Maps 14-31 and maps 39-47 relate to the new Tablelands Regional Local Government Area and are not applicable to the Mareeba Shire Local Government Area. Tablelands Regional Council should be consulted for land within the area covered by maps 14-31 and maps 39-47.

Crown & Council Copyright Reserved.



Plans For Trunk Infrastructure
Mareeba, Southeast
Parks and Community Land

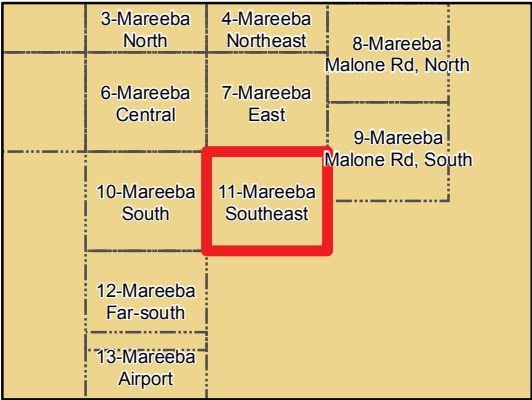
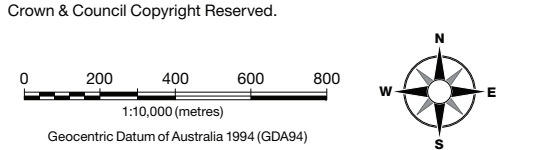
- PIA Boundary
- Urban Footprint
- Property Boundary
- Ultimate Catchment



Information

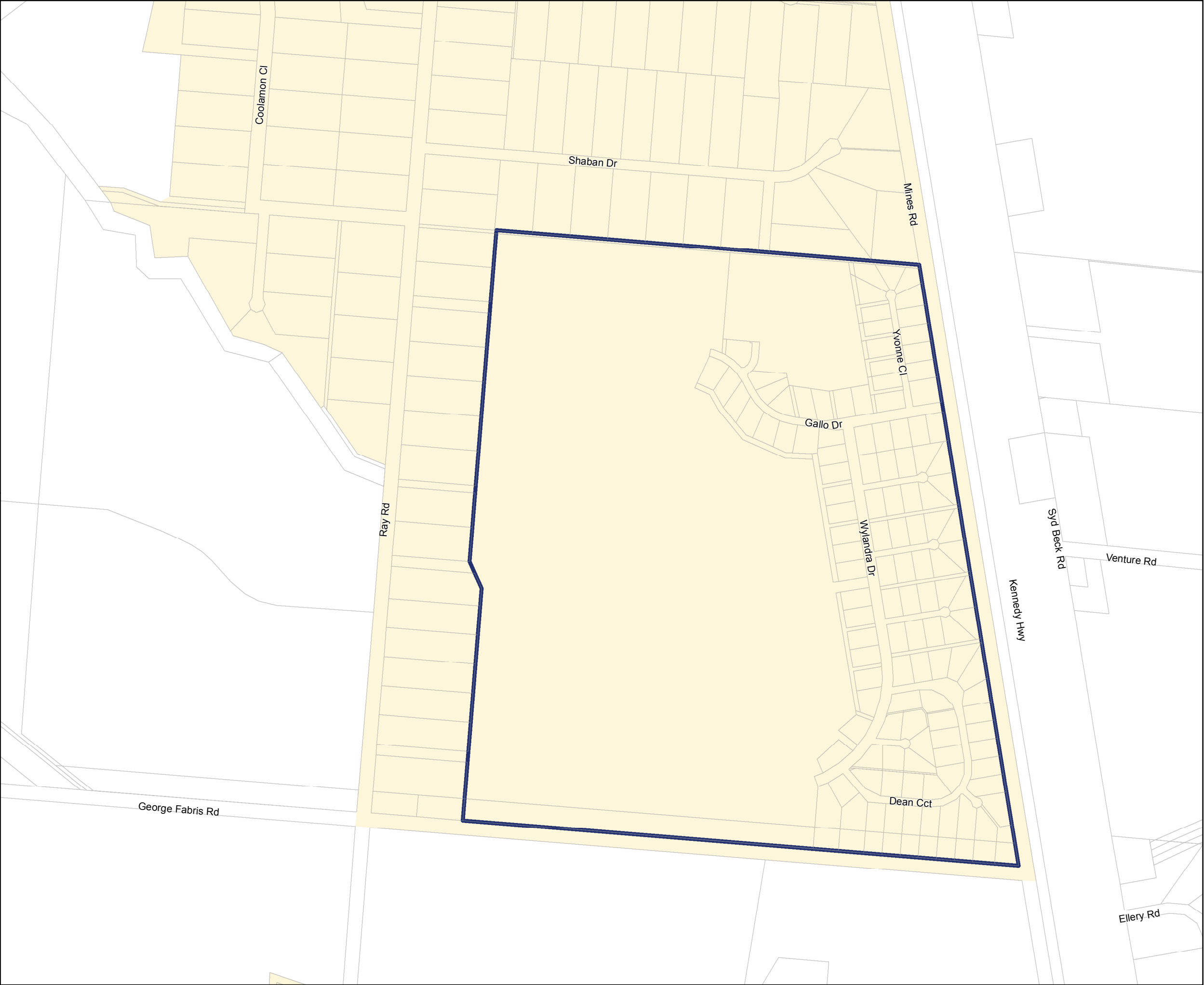
Whilst every care is taken to ensure the accuracy of this product, neither the Mareeba Shire Council or the State of Queensland make any representations or warranties about its accuracy, reliability, completeness or suitability for any particular purpose and disclaims all responsibility and all liability (including without limitation, liability in negligence) for all expenses, losses, damages (including indirect or consequential damage) and costs that may occur as a result of the product being inaccurate or incomplete in any way or for any reason.

This mapping series was prepared by the former Tablelands Regional Council. Maps 14-31 and maps 39-47 relate to the new Tablelands Regional Local Government Area and are not applicable to the Mareeba Shire Local Government Area. Tablelands Regional Council should be consulted for land within the area covered by maps 14-31 and maps 39-47.



Plans For Trunk Infrastructure
Mareeba, Far-south
Parks and Community Land

- PIA Boundary
- Urban Footprint
- Property Boundary
- Ultimate Catchment

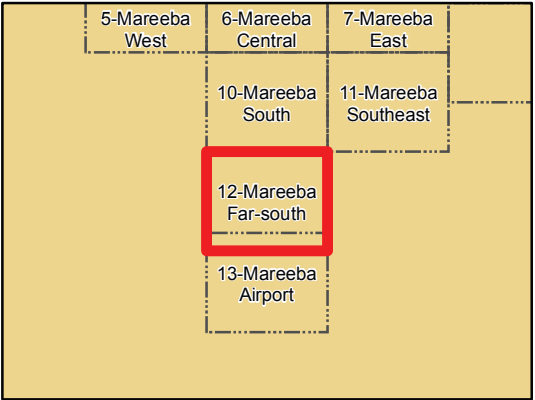
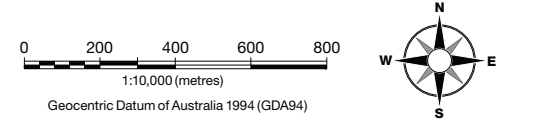


Information

Whilst every care is taken to ensure the accuracy of this product, neither the Mareeba Shire Council or the State of Queensland make any representations or warranties about its accuracy, reliability, completeness or suitability for any particular purpose and disclaims all responsibility and all liability (including without limitation, liability in negligence) for all expenses, losses, damages (including indirect or consequential damage) and costs that may occur as a result of the product being inaccurate or incomplete in any way or for any reason.

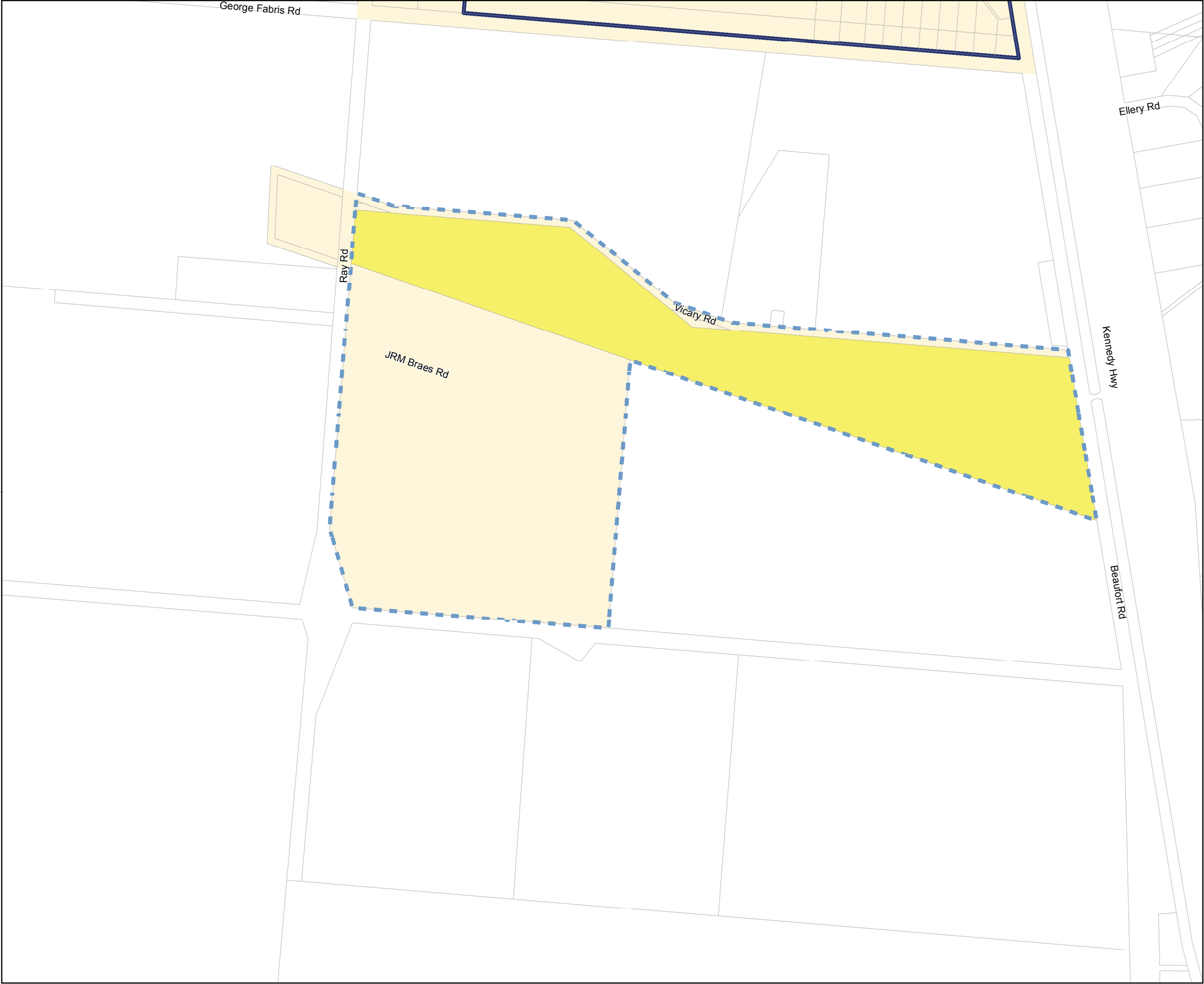
This mapping series was prepared by the former Tablelands Regional Council. Maps 14-31 and maps 39-47 relate to the new Tablelands Regional Local Government Area and are not applicable to the Mareeba Shire Local Government Area. Tablelands Regional Council should be consulted for land within the area covered by maps 14-31 and maps 39-47.

Crown & Council Copyright Reserved.



Plans For Trunk Infrastructure
Mareeba, Airport
Parks and Community Land

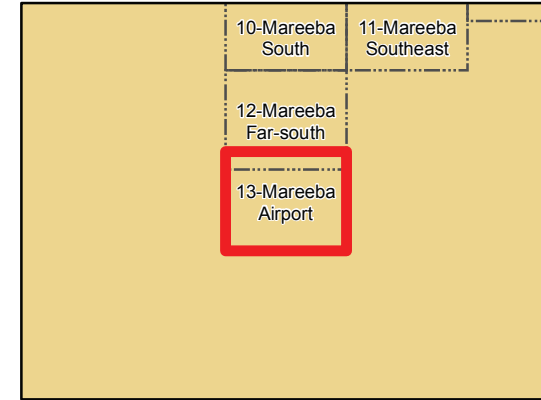
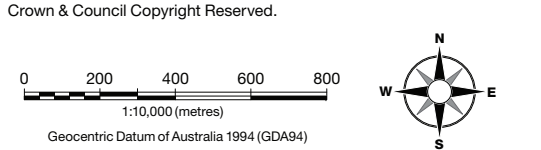
- PIA Boundary
- Urban Footprint
- Property Boundary
- Ultimate Catchment
- Community Land



Information

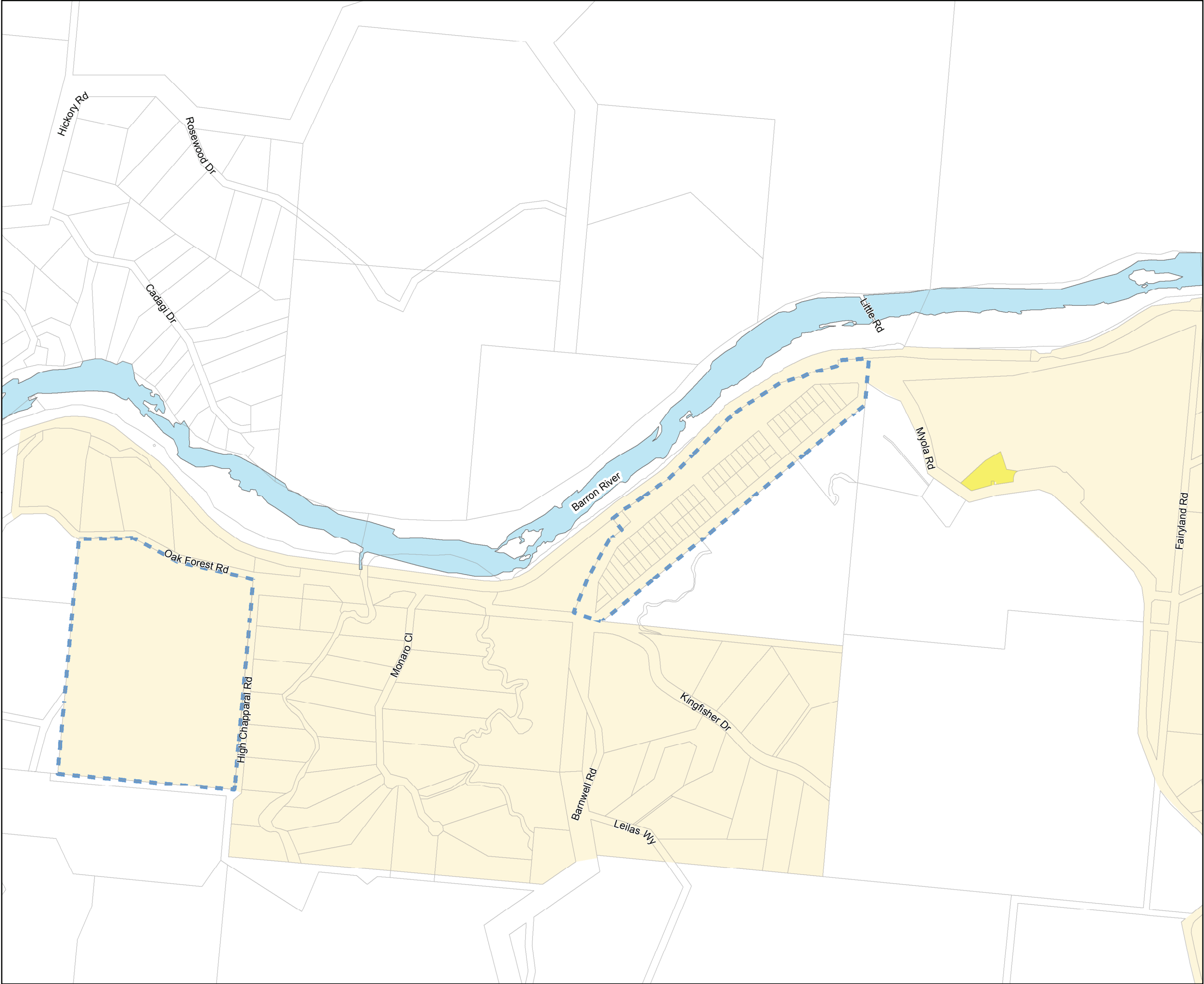
Whilst every care is taken to ensure the accuracy of this product, neither the Mareeba Shire Council or the State of Queensland make any representations or warranties about its accuracy, reliability, completeness or suitability for any particular purpose and disclaims all responsibility and all liability (including without limitation, liability in negligence) for all expenses, losses, damages (including indirect or consequential damage) and costs that may occur as a result of the product being inaccurate or incomplete in any way or for any reason.

This mapping series was prepared by the former Tablelands Regional Council. Maps 14-31 and maps 39-47 relate to the new Tablelands Regional Local Government Area and are not applicable to the Mareeba Shire Local Government Area. Tablelands Regional Council should be consulted for land within the area covered by maps 14-31 and maps 39-47.



Plans For Trunk Infrastructure
Kuranda, Northwest
Parks and Community Land

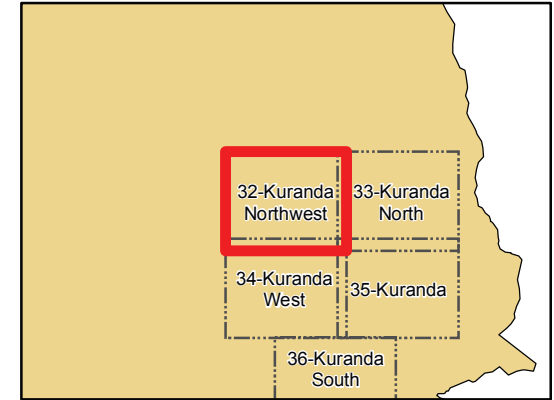
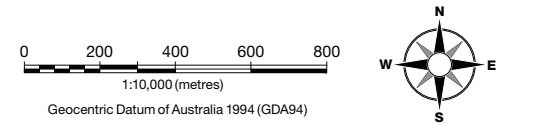
- Urban Footprint
- Property Boundary
- Ultimate Catchment
- Community Land



Information
Whilst every care is taken to ensure the accuracy of this product, neither the Mareeba Shire Council or the State of Queensland make any representations or warranties about its accuracy, reliability, completeness or suitability for any particular purpose and disclaims all responsibility and all liability (including without limitation, liability in negligence) for all expenses, losses, damages (including indirect or consequential damage) and costs that may occur as a result of the product being inaccurate or incomplete in any way or for any reason.

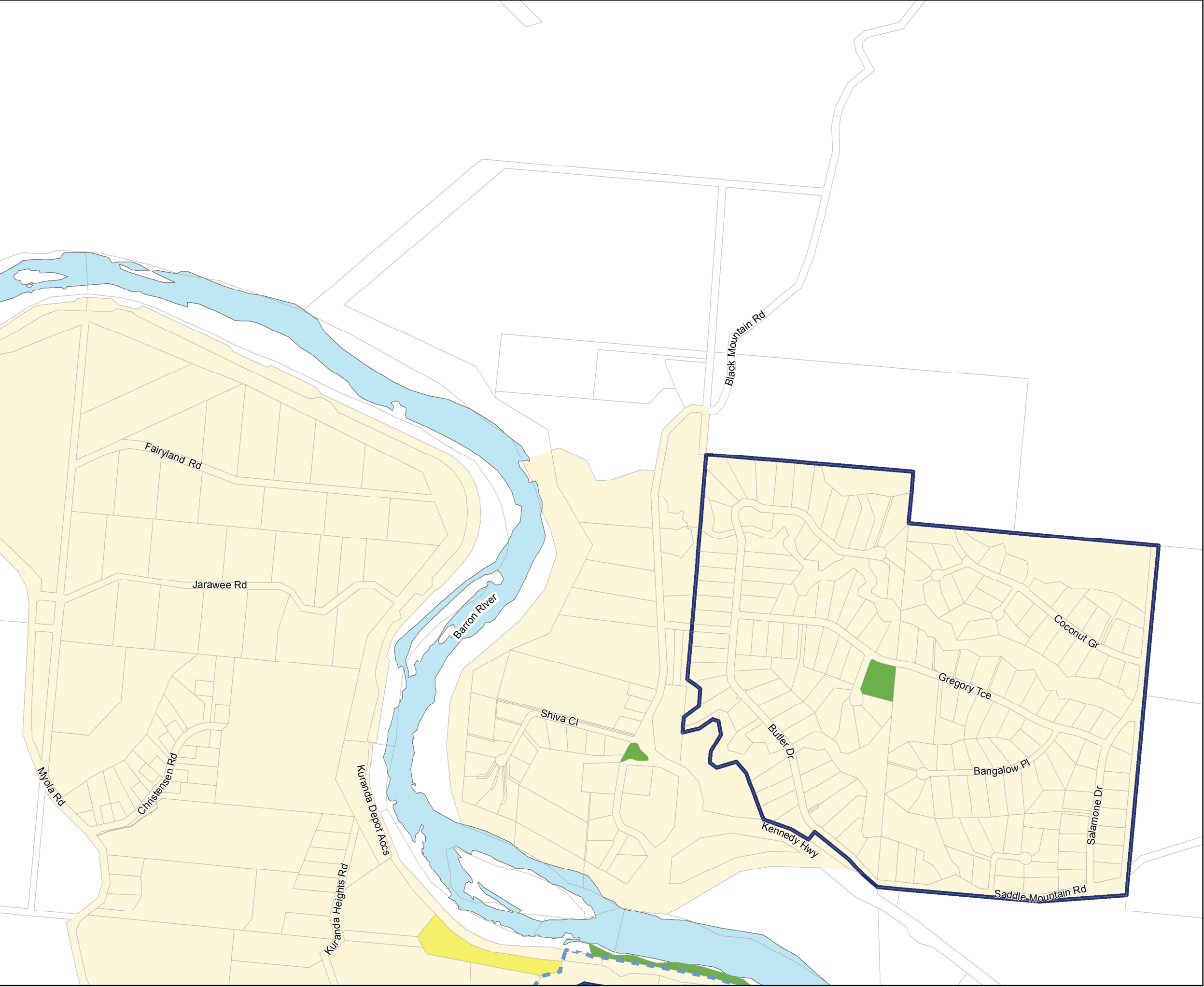
This mapping series was prepared by the former Tablelands Regional Council. Maps 14-31 and maps 39-47 relate to the new Tablelands Regional Local Government Area and are not applicable to the Mareeba Shire Local Government Area. Tablelands Regional Council should be consulted for land within the area covered by maps 14-31 and maps 39-47.

Crown & Council Copyright Reserved.



Plans For Trunk Infrastructure
Kuranda, North
Parks and Community Land

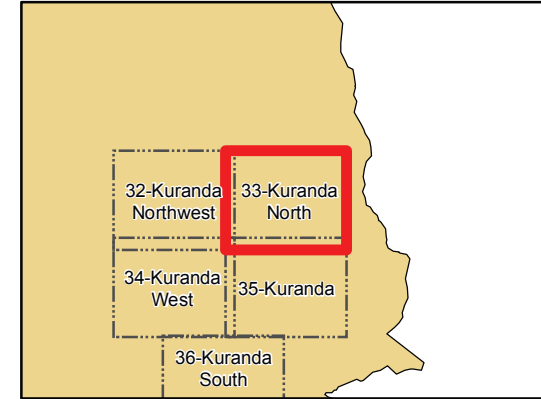
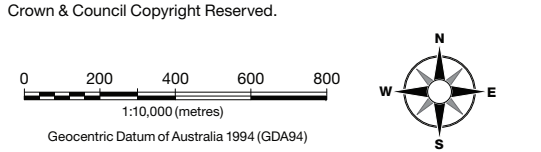
- PIA Boundary
- Urban Footprint
- Property Boundary
- Ultimate Catchment
- Park
- Community Land



Information

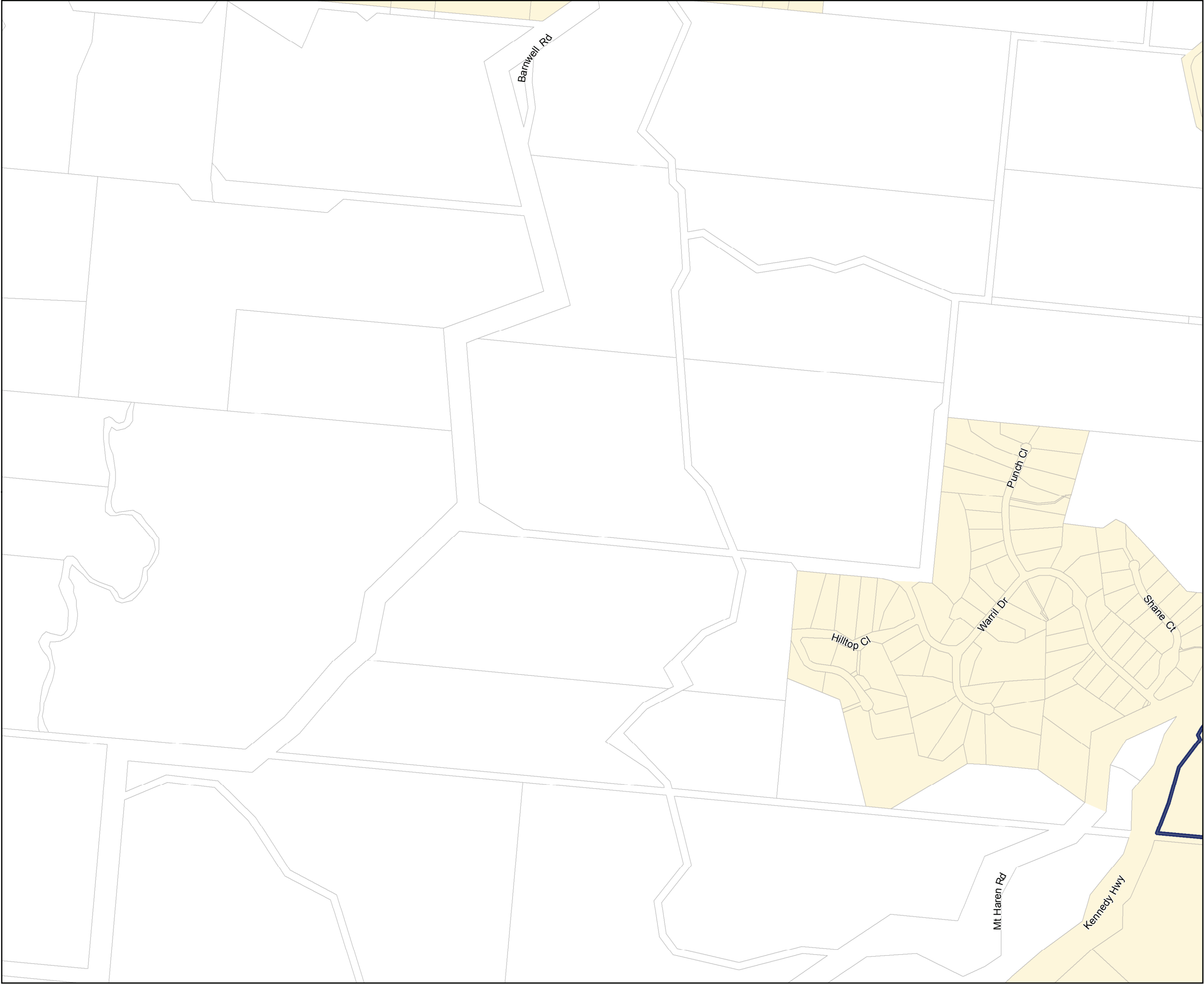
Whilst every care is taken to ensure the accuracy of this product, neither the Mareeba Shire Council or the State of Queensland make any representations or warranties about its accuracy, reliability, completeness or suitability for any particular purpose and disclaims all responsibility and all liability (including without limitation, liability in negligence) for all expenses, losses, damages (including indirect or consequential damage) and costs that may occur as a result of the product being inaccurate or incomplete in any way or for any reason.

This mapping series was prepared by the former Tablelands Regional Council. Maps 14-31 and maps 39-47 relate to the new Tablelands Regional Local Government Area and are not applicable to the Mareeba Shire Local Government Area. Tablelands Regional Council should be consulted for land within the area covered by maps 14-31 and maps 39-47.



Plans For Trunk Infrastructure
Kuranda, West
Parks and Community Land

- PIA Boundary
- Urban Footprint
- Property Boundary
- Ultimate Catchment

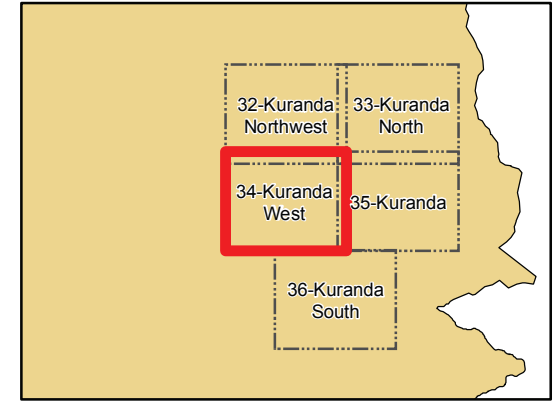
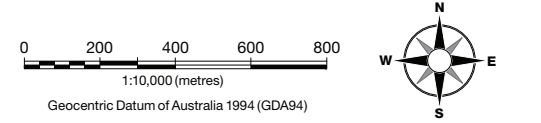


Information

Whilst every care is taken to ensure the accuracy of this product, neither the Mareeba Shire Council or the State of Queensland make any representations or warranties about its accuracy, reliability, completeness or suitability for any particular purpose and disclaims all responsibility and all liability (including without limitation, liability in negligence) for all expenses, losses, damages (including indirect or consequential damage) and costs that may occur as a result of the product being inaccurate or incomplete in any way or for any reason.

This mapping series was prepared by the former Tablelands Regional Council. Maps 14-31 and maps 39-47 relate to the new Tablelands Regional Local Government Area and are not applicable to the Mareeba Shire Local Government Area. Tablelands Regional Council should be consulted for land within the area covered by maps 14-31 and maps 39-47.

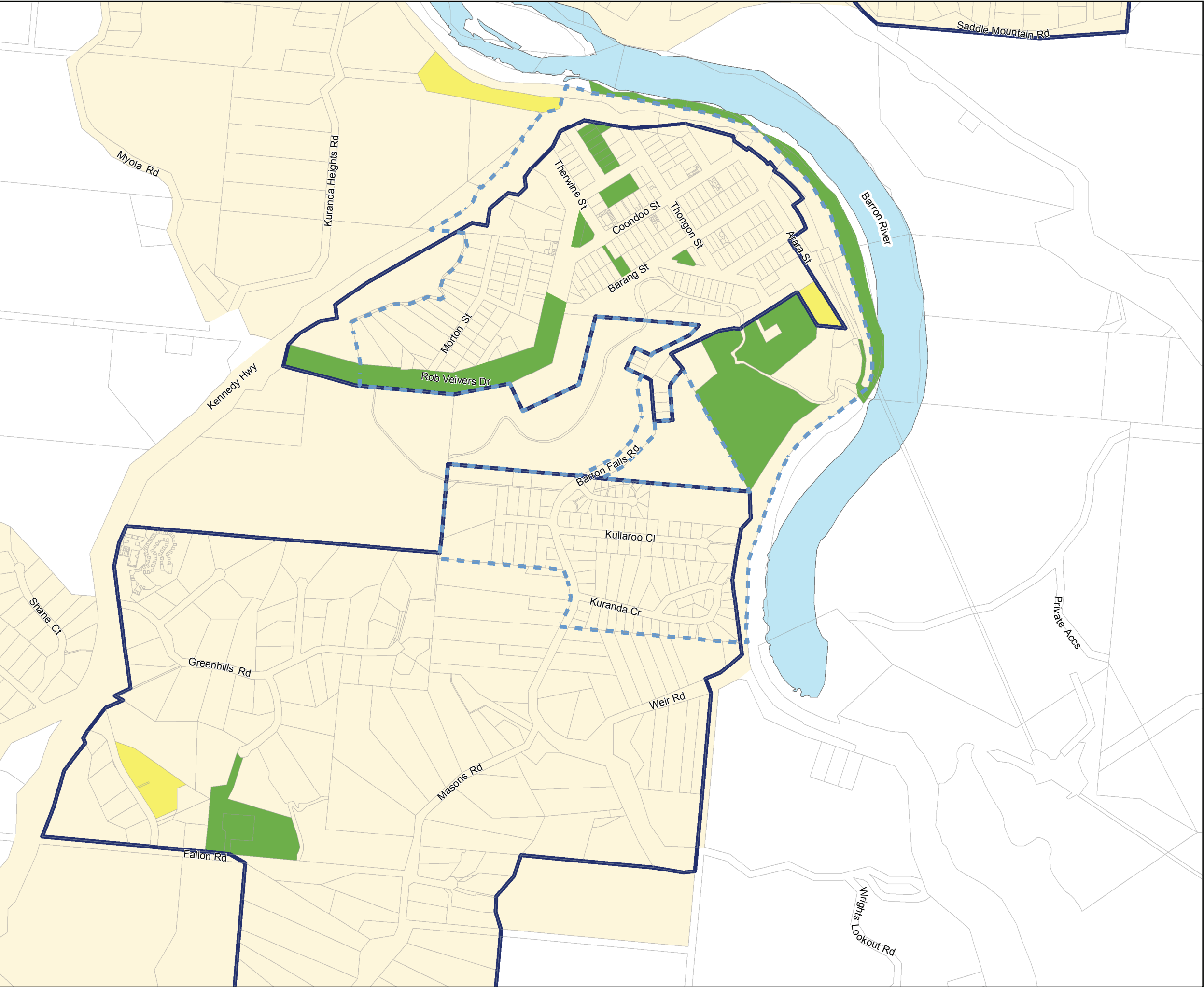
Crown & Council Copyright Reserved.



Planning Scheme Map
Parks-PFTI34 of 47

Plans For Trunk Infrastructure
Kuranda
Parks and Community Land

- PIA Boundary
- Urban Footprint
- Property Boundary
- Ultimate Catchment
- Park
- Community Land

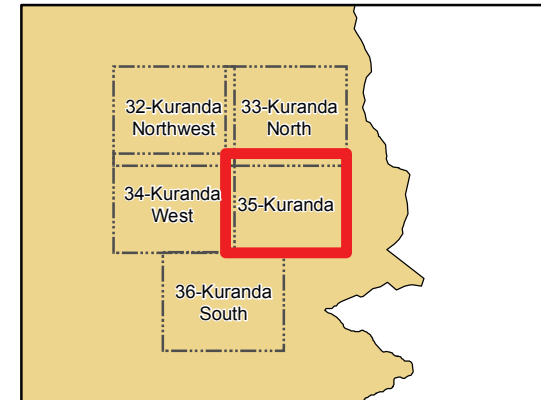
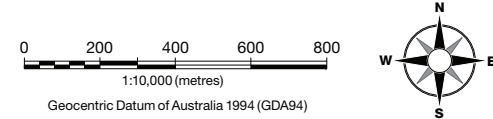


Information

Whilst every care is taken to ensure the accuracy of this product, neither the Mareeba Shire Council or the State of Queensland make any representations or warranties about its accuracy, reliability, completeness or suitability for any particular purpose and disclaims all responsibility and all liability (including without limitation, liability in negligence) for all expenses, losses, damages (including indirect or consequential damage) and costs that may occur as a result of the product being inaccurate or incomplete in any way or for any reason.

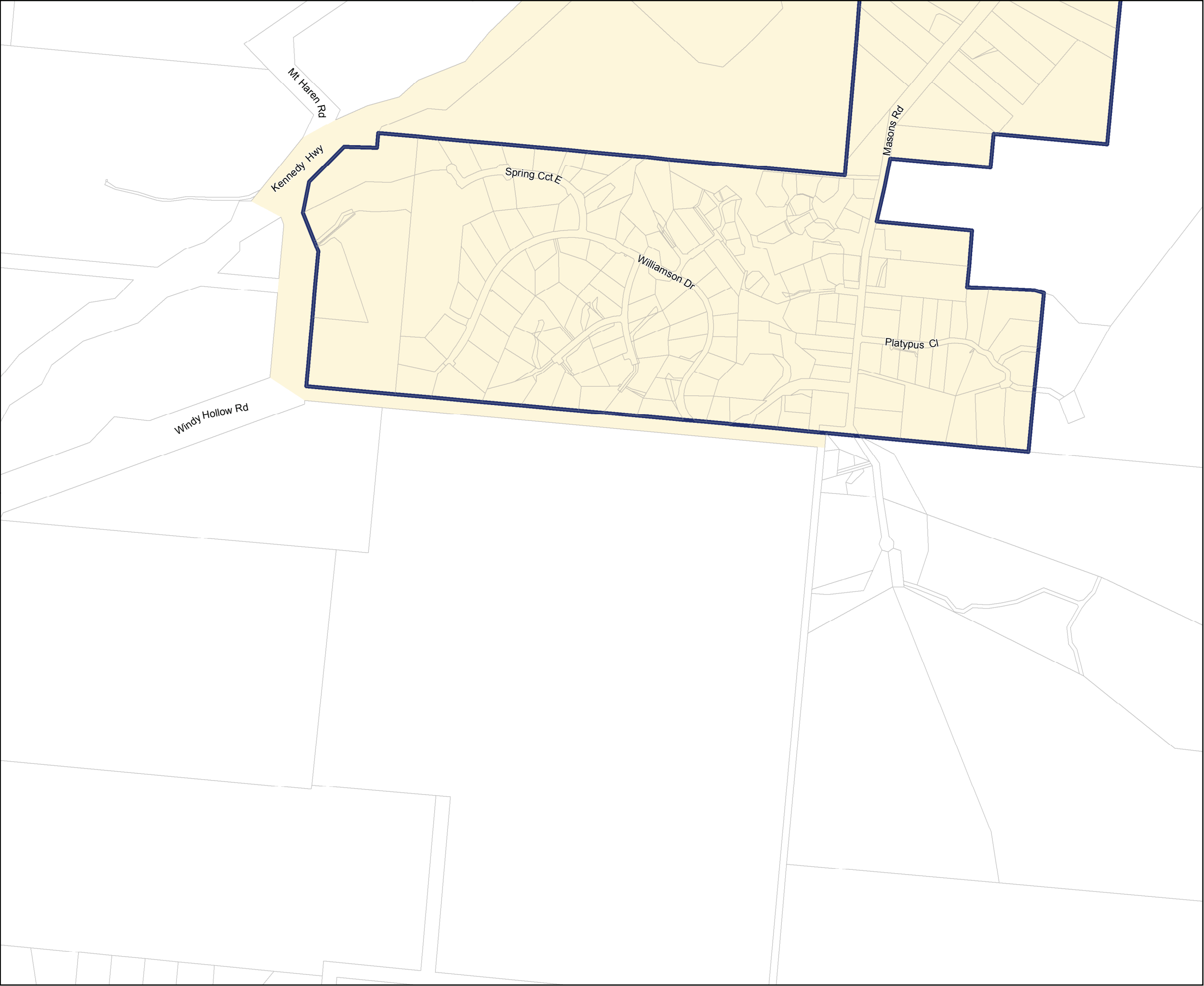
This mapping series was prepared by the former Tablelands Regional Council. Maps 14-31 and maps 39-47 relate to the new Tablelands Regional Local Government Area and are not applicable to the Mareeba Shire Local Government Area. Tablelands Regional Council should be consulted for land within the area covered by maps 14-31 and maps 39-47.

Crown & Council Copyright Reserved.



Plans For Trunk Infrastructure
Kuranda, South
Parks and Community Land

- PIA Boundary
- Urban Footprint
- Property Boundary
- Ultimate Catchment

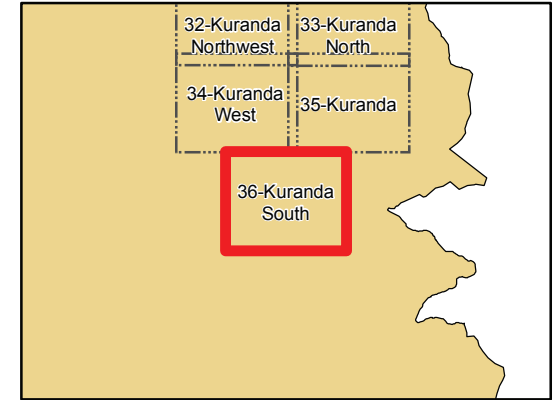
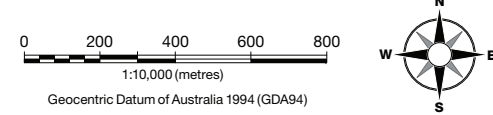


Information

Whilst every care is taken to ensure the accuracy of this product, neither the Mareeba Shire Council or the State of Queensland make any representations or warranties about its accuracy, reliability, completeness or suitability for any particular purpose and disclaims all responsibility and all liability (including without limitation, liability in negligence) for all expenses, losses, damages (including indirect or consequential damage) and costs that may occur as a result of the product being inaccurate or incomplete in any way or for any reason.

This mapping series was prepared by the former Tablelands Regional Council. Maps 14-31 and maps 39-47 relate to the new Tablelands Regional Local Government Area and are not applicable to the Mareeba Shire Local Government Area. Tablelands Regional Council should be consulted for land within the area covered by maps 14-31 and maps 39-47.

Crown & Council Copyright Reserved.



Plans For Trunk Infrastructure
Dimbulah

Parks and Community Land

- PIA Boundary
- Urban Footprint
- Property Boundary
- Park
- Community Land

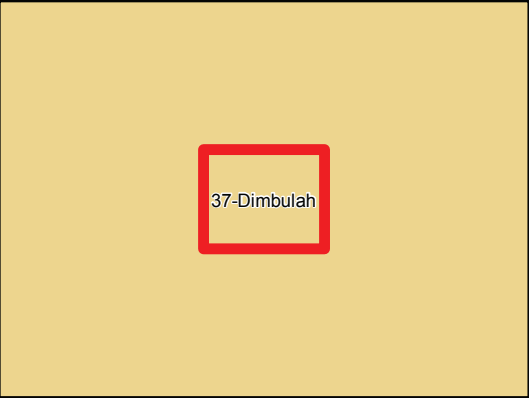
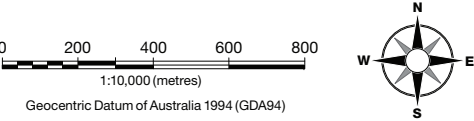


Information

Whilst every care is taken to ensure the accuracy of this product, neither the Mareeba Shire Council or the State of Queensland make any representations or warranties about its accuracy, reliability, completeness or suitability for any particular purpose and disclaims all responsibility and all liability (including without limitation, liability in negligence) for all expenses, losses, damages (including indirect or consequential damage) and costs that may occur as a result of the product being inaccurate or incomplete in any way or for any reason.

This mapping series was prepared by the former Tablelands Regional Council. Maps 14-31 and maps 39-47 relate to the new Tablelands Regional Local Government Area and are not applicable to the Mareeba Shire Local Government Area. Tablelands Regional Council should be consulted for land within the area covered by maps 14-31 and maps 39-47.

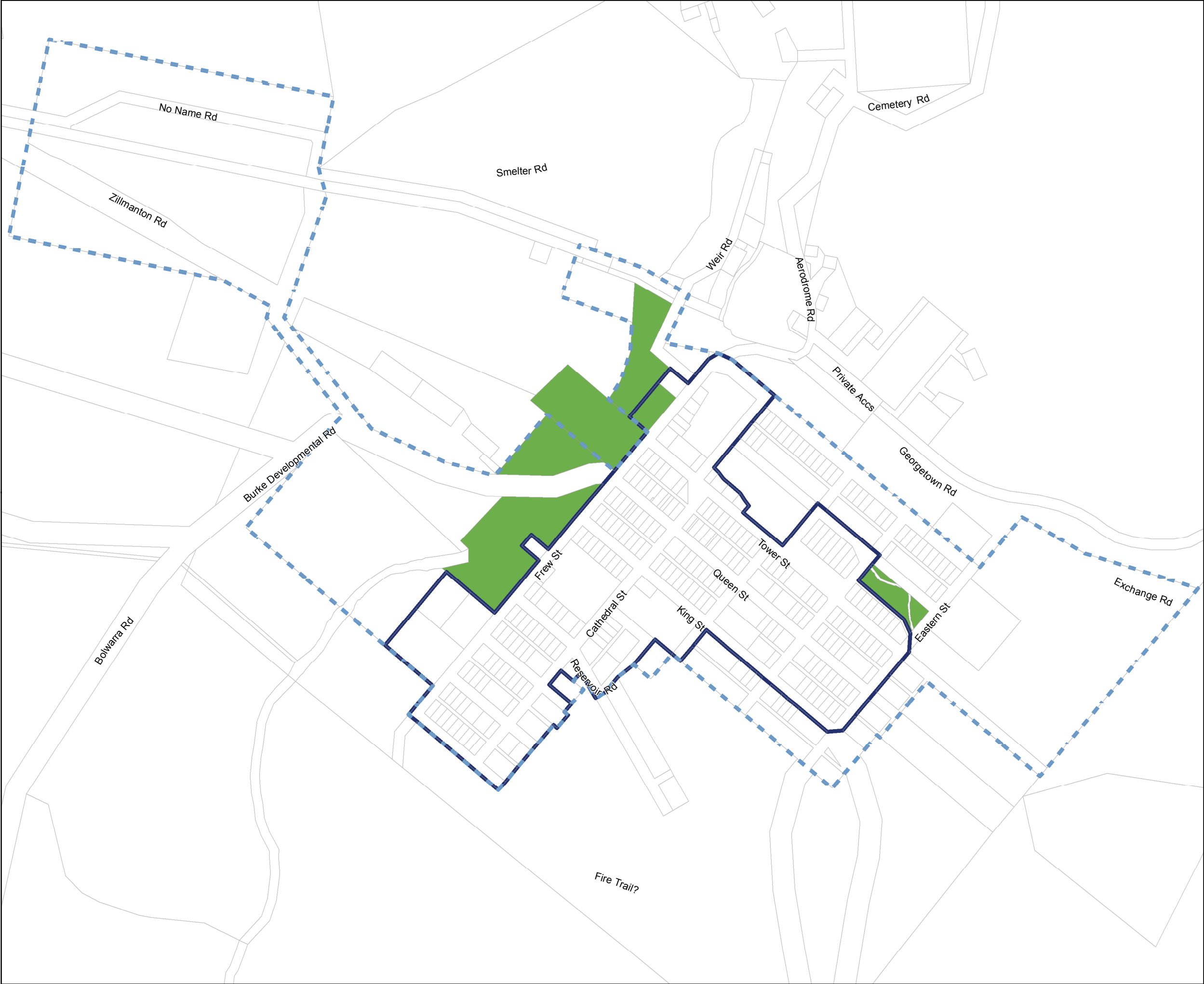
Crown & Council Copyright Reserved.



Plans For Trunk Infrastructure
Chillagoe

Parks and Community Land

- PIA Boundary
- Urban Footprint
- Property Boundary
- Park



Information

Whilst every care is taken to ensure the accuracy of this product, neither the Mareeba Shire Council or the State of Queensland make any representations or warranties about its accuracy, reliability, completeness or suitability for any particular purpose and disclaims all responsibility and all liability (including without limitation, liability in negligence) for all expenses, losses, damages (including indirect or consequential damage) and costs that may occur as a result of the product being inaccurate or incomplete in any way or for any reason.

This mapping series was prepared by the former Tablelands Regional Council. Maps 14-31 and maps 39-47 relate to the new Tablelands Regional Local Government Area and are not applicable to the Mareeba Shire Local Government Area. Tablelands Regional Council should be consulted for land within the area covered by maps 14-31 and maps 39-47.

Crown & Council Copyright Reserved.

0200400600800

1:10,000 (metres)

Geocentric Datum of Australia 1994 (GDA94)

N

W

E

S

