

LEGEND

Matters of State Environmental Significance

- Protected Area
- Wildlife Habitat
- Regulated Vegetation ⁽¹⁾
- High Ecological Significance Wetlands
- High Ecological Significance Wetlands 200 metre buffer
- Legally Secured Offset Areas

Other Elements

- Cadastre
- Mareeba Shire Council Boundary
- Watercourse ⁽²⁾

⁽¹⁾ 'Regulated Vegetation Intersecting a Watercourse' is identified spatially on 'Environmental Significance - Waterways' Overlay Maps OM004p to OM004z.

⁽²⁾ Waterways and Waterway Buffers are identified spatially on 'Environmental Significance - Waterways' Overlay Maps OM004p to OM004z.

Information

Whilst every care is taken to ensure the accuracy of this product, neither the Mareeba Shire Council or the State of Queensland make any representations or warranties about its accuracy, reliability, completeness or suitability for any particular purpose and disclaims all responsibility and all liability (including without limitation, liability in negligence) for all expenses, losses, damages (including indirect or consequential damage) and costs that may occur as a result of the product being inaccurate or incomplete in any way or for any reason.

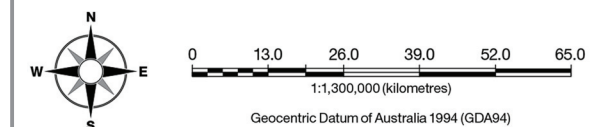
All data depicted on this map has been sourced from either the Mareeba Shire Council or the State of Queensland from the latest datasets available at the time of map compilation.

Map compilation date: January 2016.

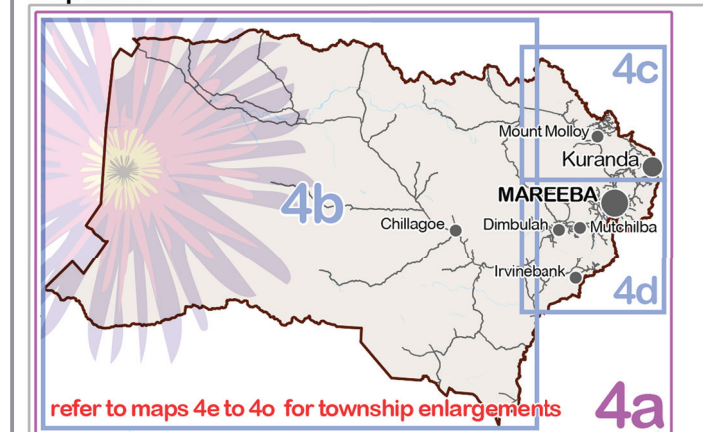
Crown & Council Copyright Reserved.

Note

Where information on the map is obscured by text or other map elements contact Council for a determination.

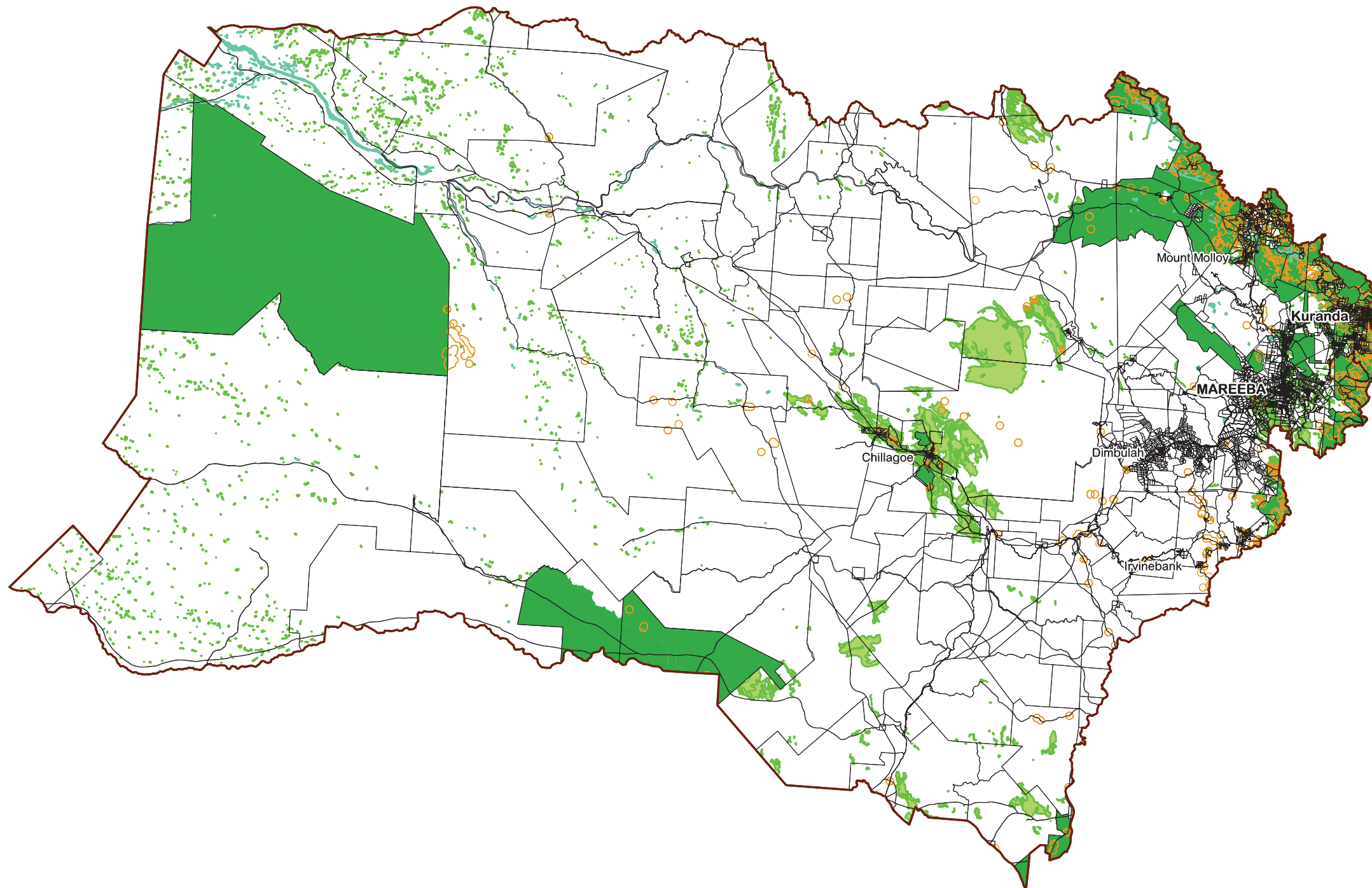


Map Index



Overlay Map Environmental Significance- Regionwide

OVERLAY MAP - OM004a



LEGEND

Matters of State Environmental Significance

- Protected Area
- Wildlife Habitat
- Regulated Vegetation⁽¹⁾
- High Ecological Significance Wetlands
- High Ecological Significance Wetlands 200 metre Buffer
- Legally Secured Offset Areas

Other Elements

- Cadastre
- Mareeba Shire Council Boundary
- Watercourse⁽²⁾

⁽¹⁾ 'Regulated Vegetation Intersecting a Watercourse' is identified spatially on 'Environmental Significance - Waterways' Overlay Maps OM004p to OM004z.

⁽²⁾ Waterways and Waterway Buffers are identified spatially on 'Environmental Significance - Waterways' Overlay Maps OM004p to OM004z.

Information

Whilst every care is taken to ensure the accuracy of this product, neither the Mareeba Shire Council or the State of Queensland make any representations or warranties about its accuracy, reliability, completeness or suitability for any particular purpose and disclaims all responsibility and all liability (including without limitation, liability in negligence) for all expenses, losses, damages (including indirect or consequential damage) and costs that may occur as a result of the product being inaccurate or incomplete in any way or for any reason.

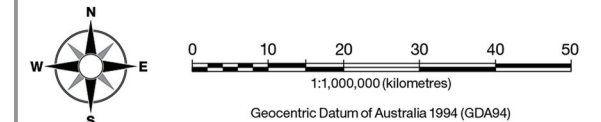
All data depicted on this map has been sourced from either the Mareeba Shire Council or the State of Queensland from the latest datasets available at the time of map compilation.

Map compilation date: January 2016.

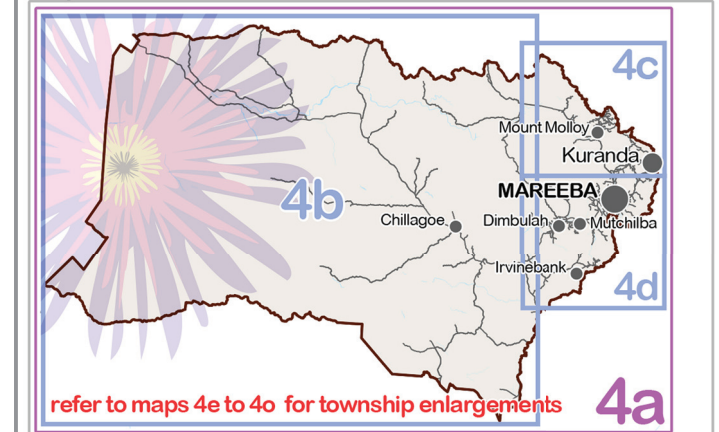
Crown & Council Copyright Reserved.

Note

Where information on the map is obscured by text or other map elements contact Council for a determination.

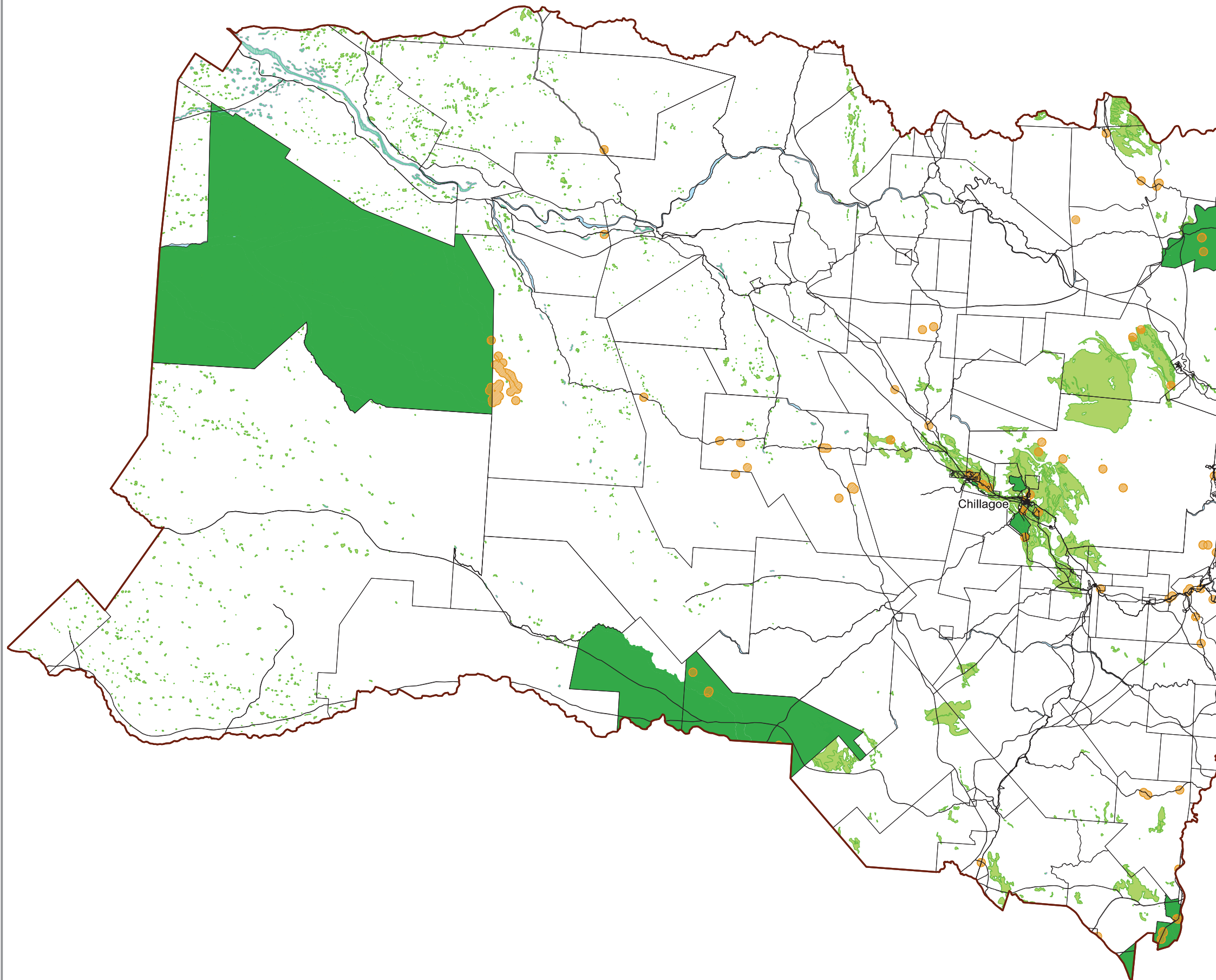


Map Index



Overlay Map
Environmental Significance-
Central and Western
Region

OVERLAY MAP - OM004b



LEGEND

Matters of State Environmental Significance

- Protected Area
- Wildlife Habitat
- Regulated Vegetation⁽¹⁾
- High Ecological Significance Wetlands
- High Ecological Significance Wetlands 200 metre Buffer
- Legally Secured Offset Areas

Other Elements

- Cadastre
- Mareeba Shire Council Boundary
- Watercourse⁽²⁾

⁽¹⁾ 'Regulated Vegetation Intersecting a Watercourse' is identified spatially on 'Environmental Significance - Waterways' Overlay Maps OM004p to OM004z.

⁽²⁾ Waterways and Waterway Buffers are identified spatially on 'Environmental Significance - Waterways' Overlay Maps OM004p to OM004z.

Information

Whilst every care is taken to ensure the accuracy of this product, neither the Mareeba Shire Council or the State of Queensland make any representations or warranties about its accuracy, reliability, completeness or suitability for any particular purpose and disclaims all responsibility and all liability (including without limitation, liability in negligence) for all expenses, losses, damages (including indirect or consequential damage) and costs that may occur as a result of the product being inaccurate or incomplete in any way or for any reason.

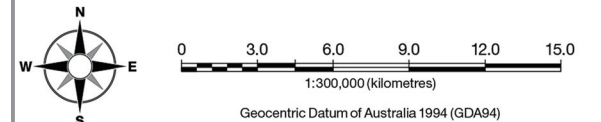
All data depicted on this map has been sourced from either the Mareeba Shire Council or the State of Queensland from the latest datasets available at the time of map compilation.

Map compilation date: January 2016.

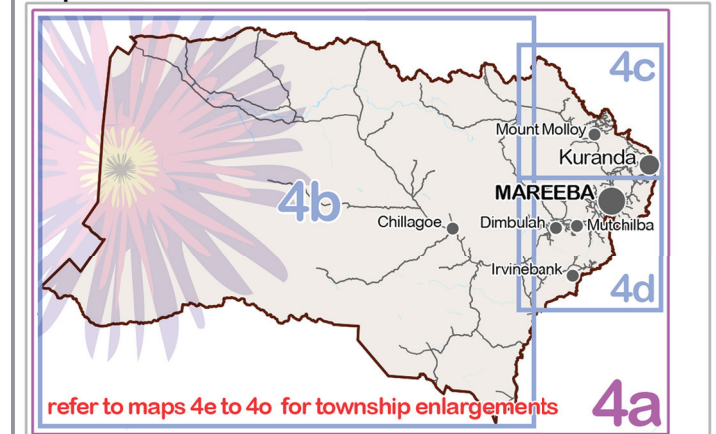
Crown & Council Copyright Reserved.

Note

Where information on the map is obscured by text or other map elements contact Council for a determination.

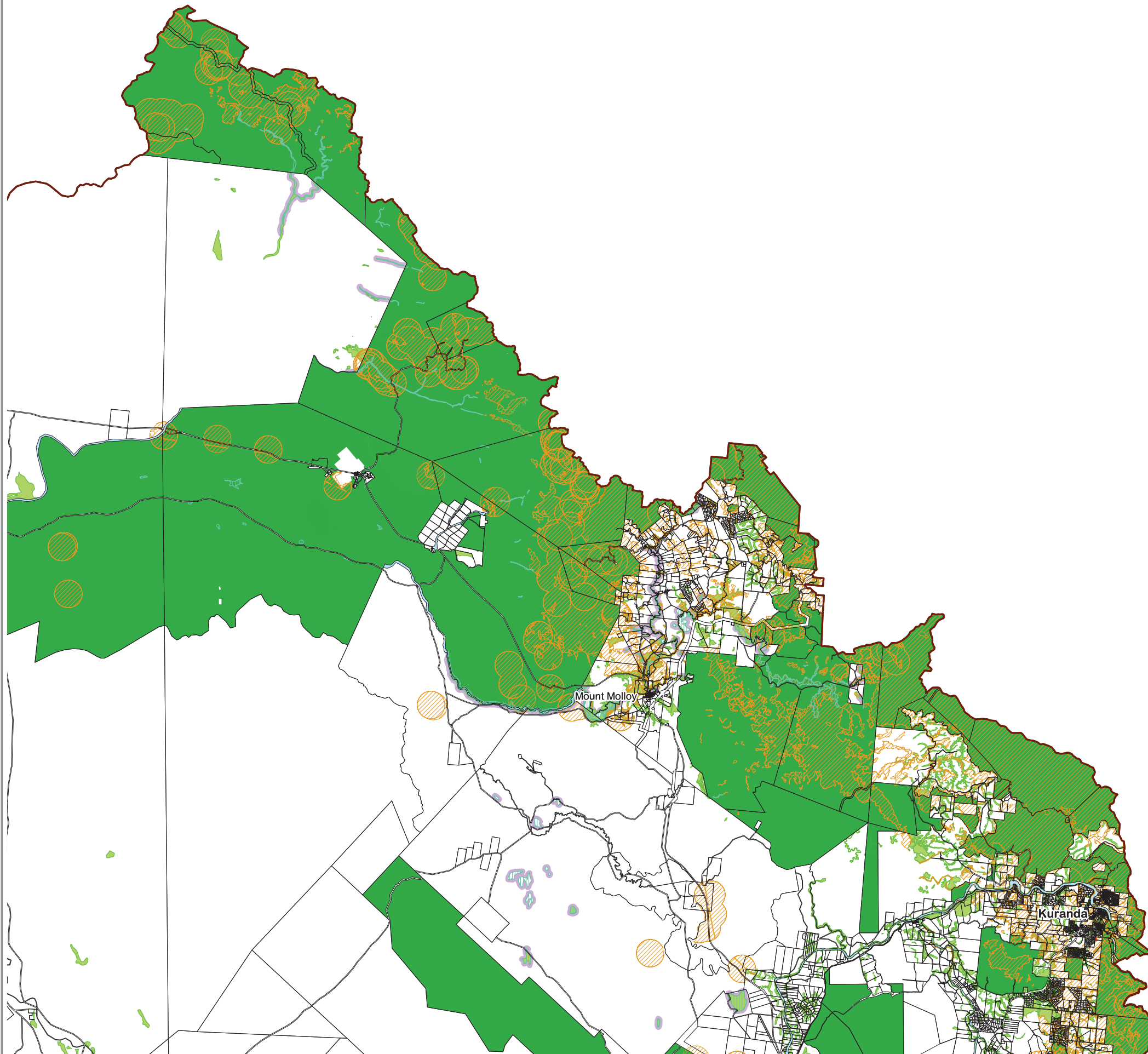


Map Index



Overlay Map Environmental Significance- Northeastern Region

OVERLAY MAP - OM004c



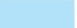


LEGEND

Matters of State Environmental Significance

-  Protected Area
-  Wildlife Habitat
-  Regulated Vegetation⁽¹⁾
-  High Ecological Significance Wetlands
-  High Ecological Significance Wetlands 200 metre Buffer
-  Legally Secured Offset Areas

Other Elements

-  Cadastre
-  Mareeba Shire Coucil Boundary
-  Watercourse ⁽²⁾

⁽¹⁾ 'Regulated Vegetation Intersecting a Watercourse' is identified spatially on 'Environmental Significance - Waterways' Overlay Maps OM004p to OM004z.

⁽²⁾ Waterways and Waterway Buffers are identified spatially on 'Environmental Significance - Waterways' Overlay Maps OM004p to OM004z.

Information

Whilst every care is taken to ensure the accuracy of this product, neither the Mareeba Shire Council or the State of Queensland make any representations or warranties about its accuracy, reliability, completeness or suitability for any particular purpose and disclaims all responsibility and all liability (including without limitation, liability in negligence) for all expenses, losses, damages (including indirect or consequential damage) and costs that may occur as a result of the product being inaccurate or incomplete in any way or for any reason.

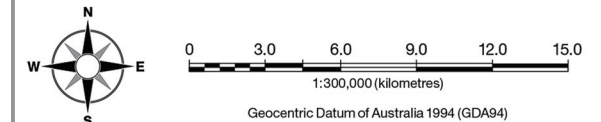
All data depicted on this map has been sourced from either the Mareeba Shire Council or the State of Queensland from the latest datasets available at the time of map compilation.

Map compilation date: January 2016.

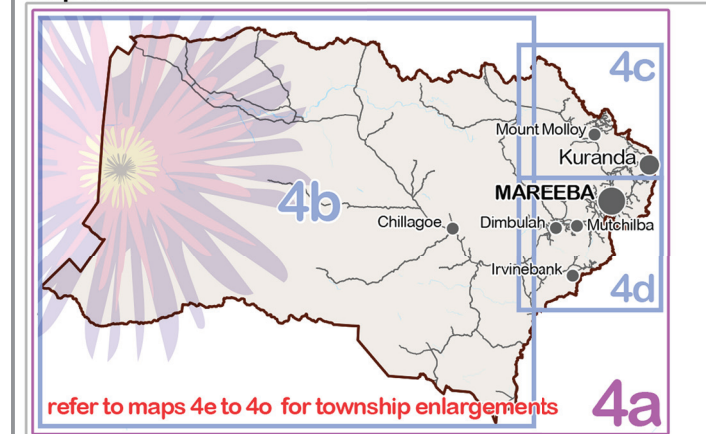
Crown & Council Copyright Reserved.

Note

Where information on the map is obscured by text or other map elements contact Council for a determination.

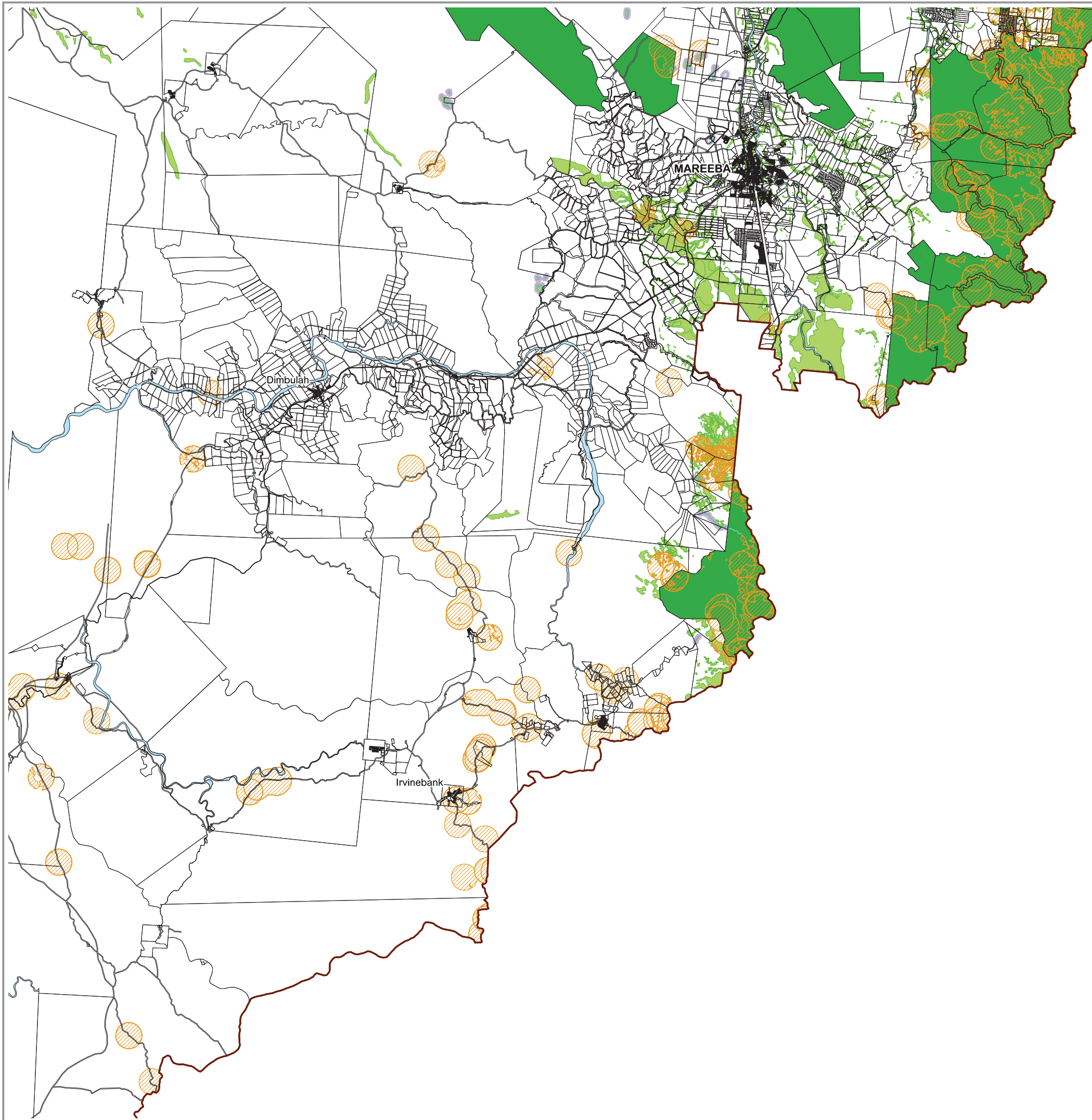


Map Index



Overlay Map
Environmental Significance-
Southeastern Region

OVERLAY MAP - OM004d



LEGEND

Matters of State Environmental Significance

- Protected Area
- Wildlife Habitat
- Regulated Vegetation⁽¹⁾
- High Ecological Significance Wetlands
- High Ecological Significance Wetlands 200 metre Buffer
- Legally Secured Offset Areas

Other Elements

- Cadastre
- Mareeba Shire Council Boundary
- Watercourse⁽²⁾

⁽¹⁾ 'Regulated Vegetation Intersecting a Watercourse' is identified spatially on 'Environmental Significance - Waterways' Overlay Maps OM004p to OM004z.

⁽²⁾ Waterways and Waterway Buffers are identified spatially on 'Environmental Significance - Waterways' Overlay Maps OM004p to OM004z.

Information

Whilst every care is taken to ensure the accuracy of this product, neither the Mareeba Shire Council or the State of Queensland make any representations or warranties about its accuracy, reliability, completeness or suitability for any particular purpose and disclaims all responsibility and all liability (including without limitation, liability in negligence) for all expenses, losses, damages (including indirect or consequential damage) and costs that may occur as a result of the product being inaccurate or incomplete in any way or for any reason.

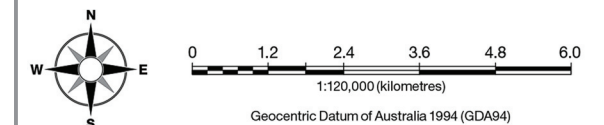
All data depicted on this map has been sourced from either the Mareeba Shire Council or the State of Queensland from the latest datasets available at the time of map compilation.

Map compilation date: January 2016.

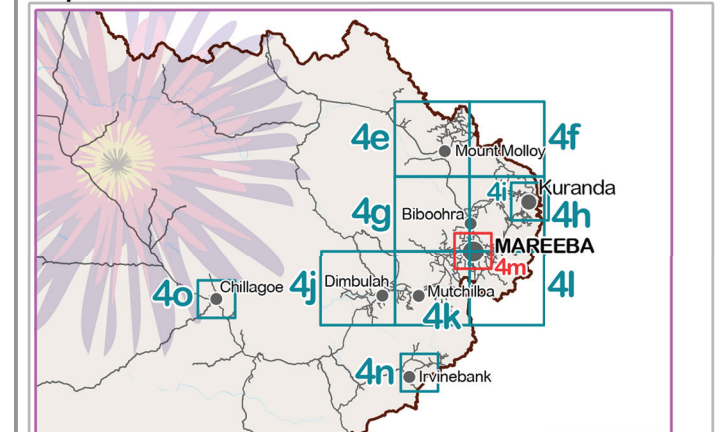
Crown & Council Copyright Reserved.

Note

Where information on the map is obscured by text or other map elements contact Council for a determination.

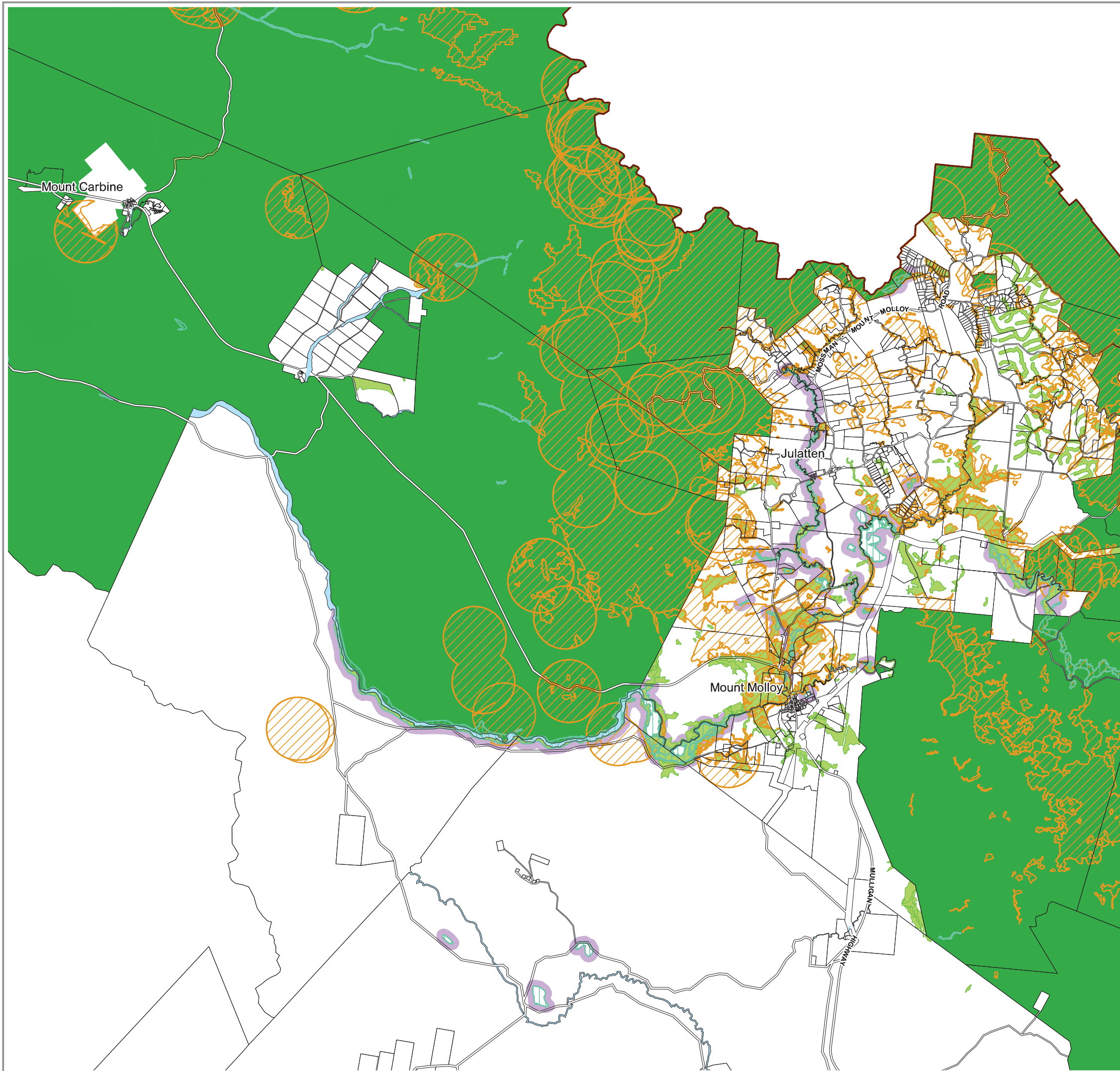


Map Index



Overlay Map Environmental Significance- Mount Molloy

OVERLAY MAP - OM004e



LEGEND

Matters of State Environmental Significance

- Protected Area
- Wildlife Habitat
- Regulated Vegetation⁽¹⁾
- High Ecological Significance Wetlands
- High Ecological Significance Wetlands 200 metre Buffer
- Legally Secured Offset Areas

Other Elements

- Cadastre
- Mareeba Shire Council Boundary
- Watercourse⁽²⁾

⁽¹⁾ 'Regulated Vegetation Intersecting a Watercourse' is identified spatially on 'Environmental Significance - Waterways' Overlay Maps OM004p to OM004z.

⁽²⁾ Waterways and Waterway Buffers are identified spatially on 'Environmental Significance - Waterways' Overlay Maps OM004p to OM004z.

Information

Whilst every care is taken to ensure the accuracy of this product, neither the Mareeba Shire Council or the State of Queensland make any representations or warranties about its accuracy, reliability, completeness or suitability for any particular purpose and disclaims all responsibility and all liability (including without limitation, liability in negligence) for all expenses, losses, damages (including indirect or consequential damage) and costs that may occur as a result of the product being inaccurate or incomplete in any way or for any reason.

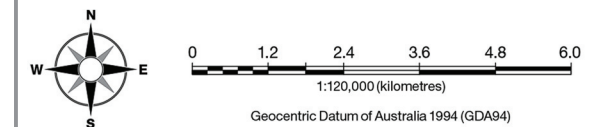
All data depicted on this map has been sourced from either the Mareeba Shire Council or the State of Queensland from the latest datasets available at the time of map compilation.

Map compilation date: January 2016.

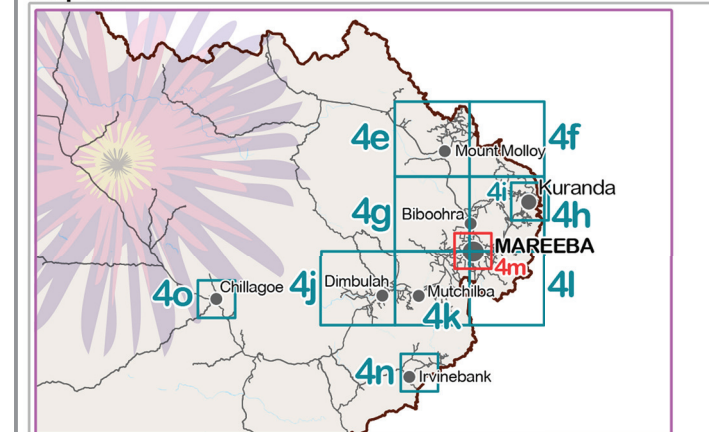
Crown & Council Copyright Reserved.

Note

Where information on the map is obscured by text or other map elements contact Council for a determination.

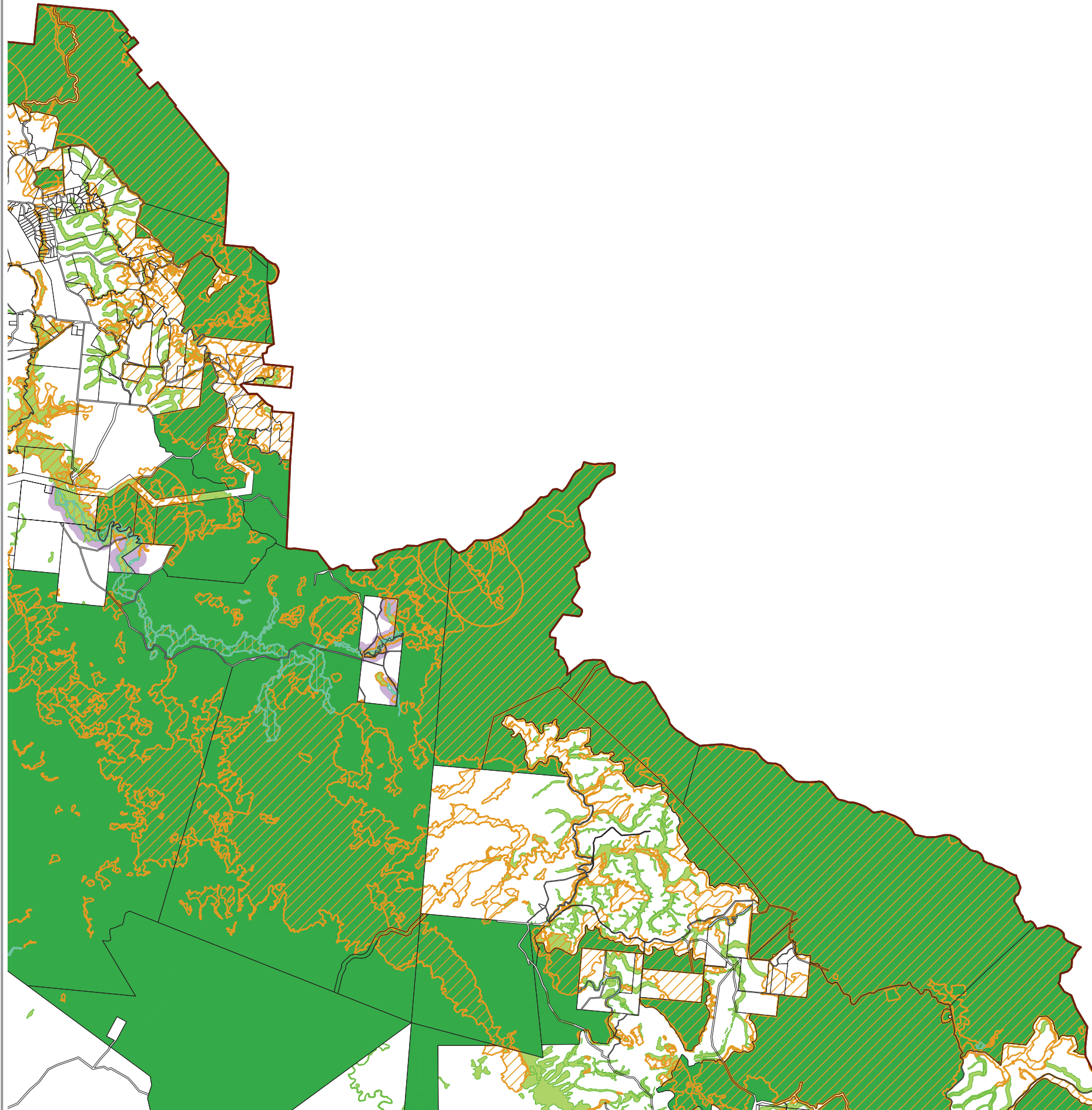


Map Index



Overlay Map
Environmental Significance-
Mona Mona

OVERLAY MAP - OM004f



LEGEND

Matters of State Environmental Significance

- Protected Area
- Wildlife Habitat
- Regulated Vegetation⁽¹⁾
- High Ecological Significance Wetlands
- High Ecological Significance Wetlands 200 metre Buffer
- Legally Secured Offset Areas

Other Elements

- Cadastre
- Mareeba Shire Council Boundary
- Watercourse⁽²⁾

⁽¹⁾ 'Regulated Vegetation Intersecting a Watercourse' is identified spatially on 'Environmental Significance - Waterways' Overlay Maps OM004p to OM004z.

⁽²⁾ Waterways and Waterway Buffers are identified spatially on 'Environmental Significance - Waterways' Overlay Maps OM004p to OM004z.

Information

Whilst every care is taken to ensure the accuracy of this product, neither the Mareeba Shire Council or the State of Queensland make any representations or warranties about its accuracy, reliability, completeness or suitability for any particular purpose and disclaims all responsibility and all liability (including without limitation, liability in negligence) for all expenses, losses, damages (including indirect or consequential damage) and costs that may occur as a result of the product being inaccurate or incomplete in any way or for any reason.

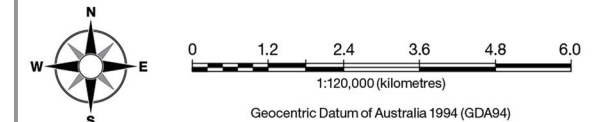
All data depicted on this map has been sourced from either the Mareeba Shire Council or the State of Queensland from the latest datasets available at the time of map compilation.

Map compilation date: January 2016.

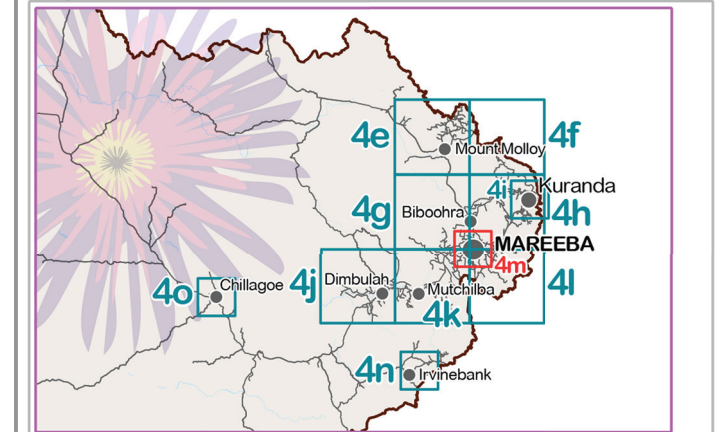
Crown & Council Copyright Reserved.

Note

Where information on the map is obscured by text or other map elements contact Council for a determination.



Map Index



Overlay Map Environmental Significance- Southedge

OVERLAY MAP - OM004g

LEGEND

Matters of State Environmental Significance

- Protected Area
- Wildlife Habitat
- Regulated Vegetation⁽¹⁾
- High Ecological Significance Wetlands
- High Ecological Significance Wetlands 200 metre Buffer
- Legally Secured Offset Areas

Other Elements

- Cadastre
- Mareeba Shire Coucil Boundary
- Watercourse ⁽²⁾

⁽¹⁾ 'Regulated Vegetation Intersecting a Watercourse' is identified spatially on 'Environmental Significance - Waterways' Overlay Maps OM004p to OM004z.

⁽²⁾ Waterways and Waterway Buffers are identified spatially on 'Environmental Significance - Waterways' Overlay Maps OM004p to OM004z.

Information

Whilst every care is taken to ensure the accuracy of this product, neither the Mareeba Shire Council or the State of Queensland make any representations or warranties about its accuracy, reliability, completeness or suitability for any particular purpose and disclaims all responsibility and all liability (including without limitation, liability in negligence) for all expenses, losses, damages (including indirect or consequential damage) and costs that may occur as a result of the product being inaccurate or incomplete in any way or for any reason.

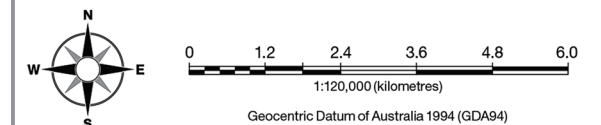
All data depicted on this map has been sourced from either the Mareeba Shire Council or the State of Queensland from the latest datasets available at the time of map compilation.

Map compilation date: January 2016.

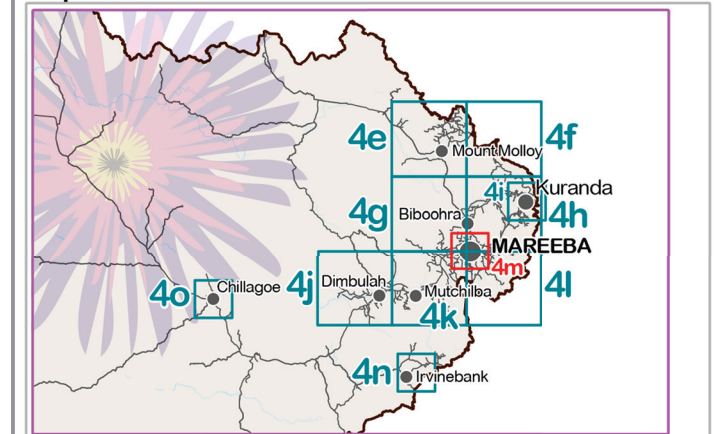
Crown & Council Copyright Reserved.

Note

Where information on the map is obscured by text or other map elements contact Council for a determination.

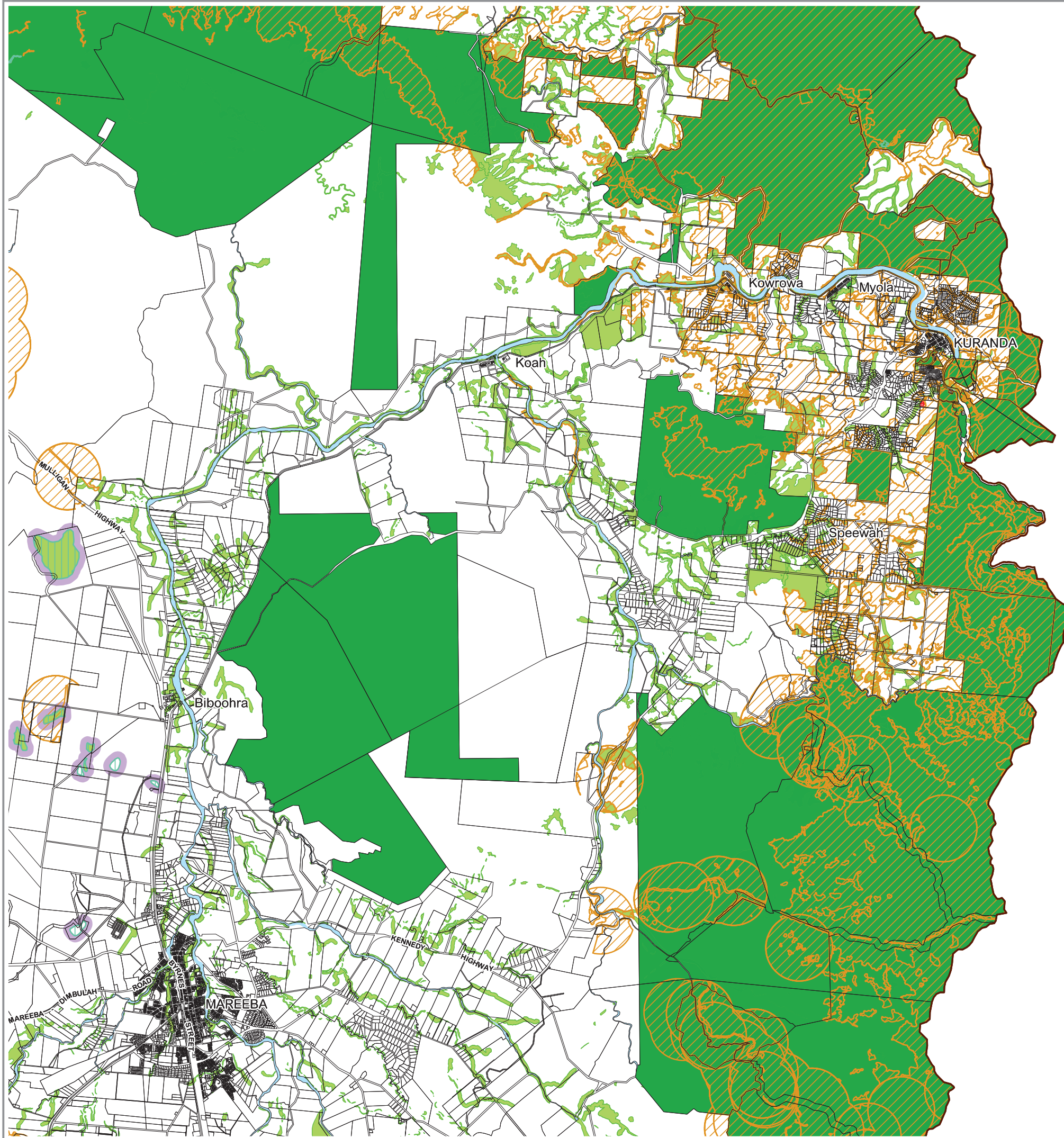


Map Index



Overlay Map Environmental Significance- Speewah

OVERLAY MAP - OM004h



LEGEND

Matters of State Environmental Significance

- Protected Area
- Wildlife Habitat
- Regulated Vegetation⁽¹⁾
- High Ecological Significance Wetlands
- High Ecological Significance Wetlands 200 metre Buffer
- Legally Secured Offset Areas

Other Elements

- Cadastre
- Mareeba Shire Council Boundary
- Watercourse⁽²⁾

⁽¹⁾ 'Regulated Vegetation Intersecting a Watercourse' is identified spatially on 'Environmental Significance - Waterways' Overlay Maps OM004p to OM004z.

⁽²⁾ Waterways and Waterway Buffers are identified spatially on 'Environmental Significance - Waterways' Overlay Maps OM004p to OM004z.

Information

Whilst every care is taken to ensure the accuracy of this product, neither the Mareeba Shire Council or the State of Queensland make any representations or warranties about its accuracy, reliability, completeness or suitability for any particular purpose and disclaims all responsibility and all liability (including without limitation, liability in negligence) for all expenses, losses, damages (including indirect or consequential damage) and costs that may occur as a result of the product being inaccurate or incomplete in any way or for any reason.

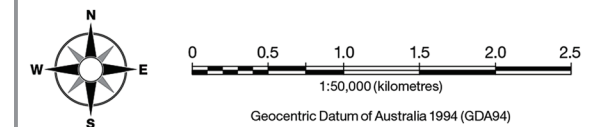
All data depicted on this map has been sourced from either the Mareeba Shire Council or the State of Queensland from the latest datasets available at the time of map compilation.

Map compilation date: January 2016.

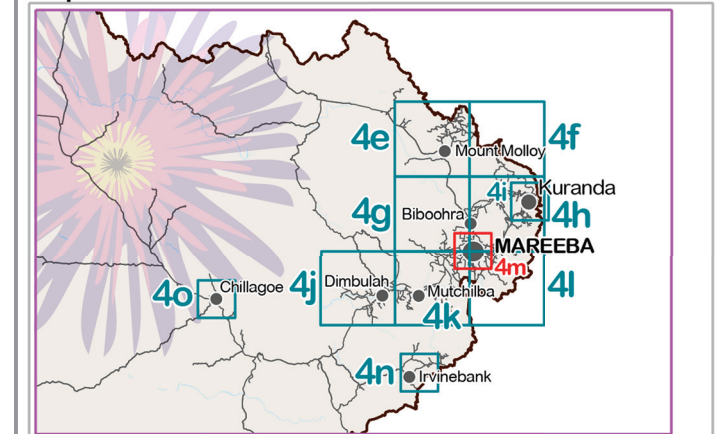
Crown & Council Copyright Reserved.

Note

Where information on the map is obscured by text or other map elements contact Council for a determination.

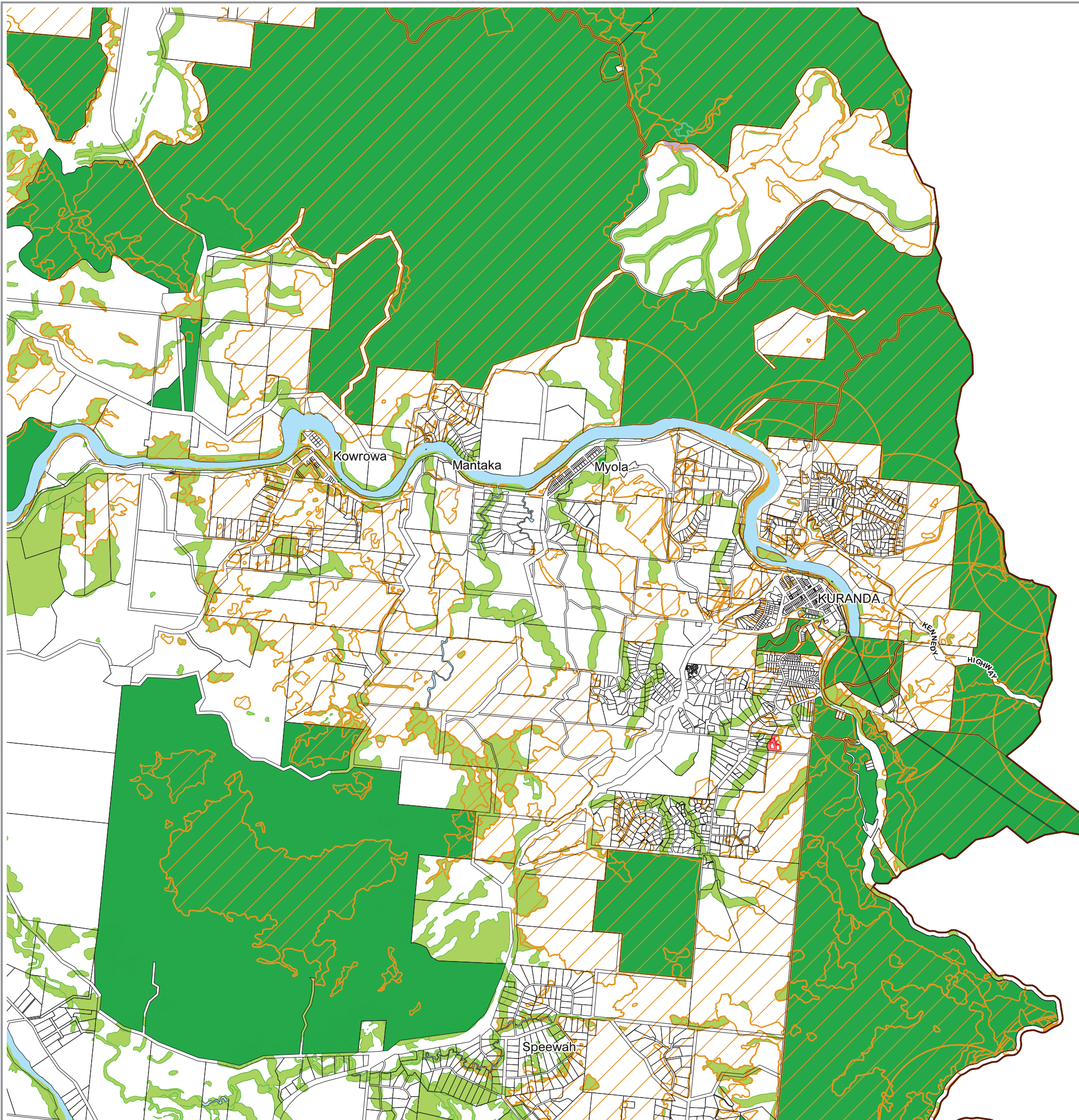


Map Index



Overlay Map Environmental Significance- Kuranda

OVERLAY MAP - OM004i



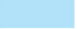


LEGEND

Matters of State Environmental Significance

-  Protected Area
-  Wildlife Habitat
-  Regulated Vegetation⁽¹⁾
-  High Ecological Significance Wetlands
-  High Ecological Significance Wetlands 200 metre Buffer
-  Legally Secured Offset Areas

Other Elements

-  Cadastre
-  Mareeba Shire Coucil Boundary
-  Watercourse⁽²⁾

(1) 'Regulated Vegetation Intersecting a Watercourse' is identified spatially on 'Environmental Significance - Waterways' Overlay Maps OM004p to OM004z.

(2) Waterways and Waterway Buffers are identified spatially on 'Environmental Significance - Waterways' Overlay Maps OM004p to OM004z.

Information

Whilst every care is taken to ensure the accuracy of this product, neither the Mareeba Shire Council or the State of Queensland make any representations or warranties about its accuracy, reliability, completeness or suitability for any particular purpose and disclaims all responsibility and all liability (including without limitation, liability in negligence) for all expenses, losses, damages (including indirect or consequential damage) and costs that may occur as a result of the product being inaccurate or incomplete in any way or for any reason.

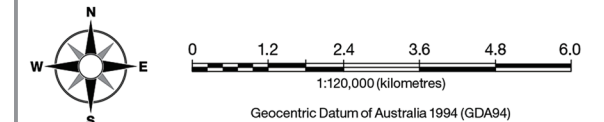
All data depicted on this map has been sourced from either the Mareeba Shire Council or the State of Queensland from the latest datasets available at the time of map compilation.

Map compilation date: January 2016.

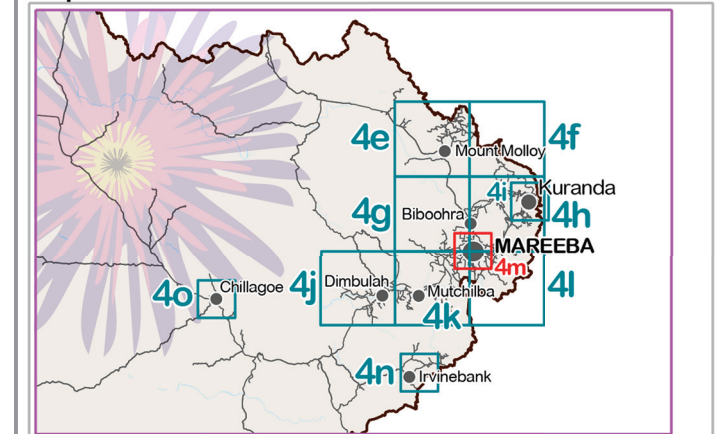
Crown & Council Copyright Reserved.

Note

Where information on the map is obscured by text or other map elements contact Council for a determination.

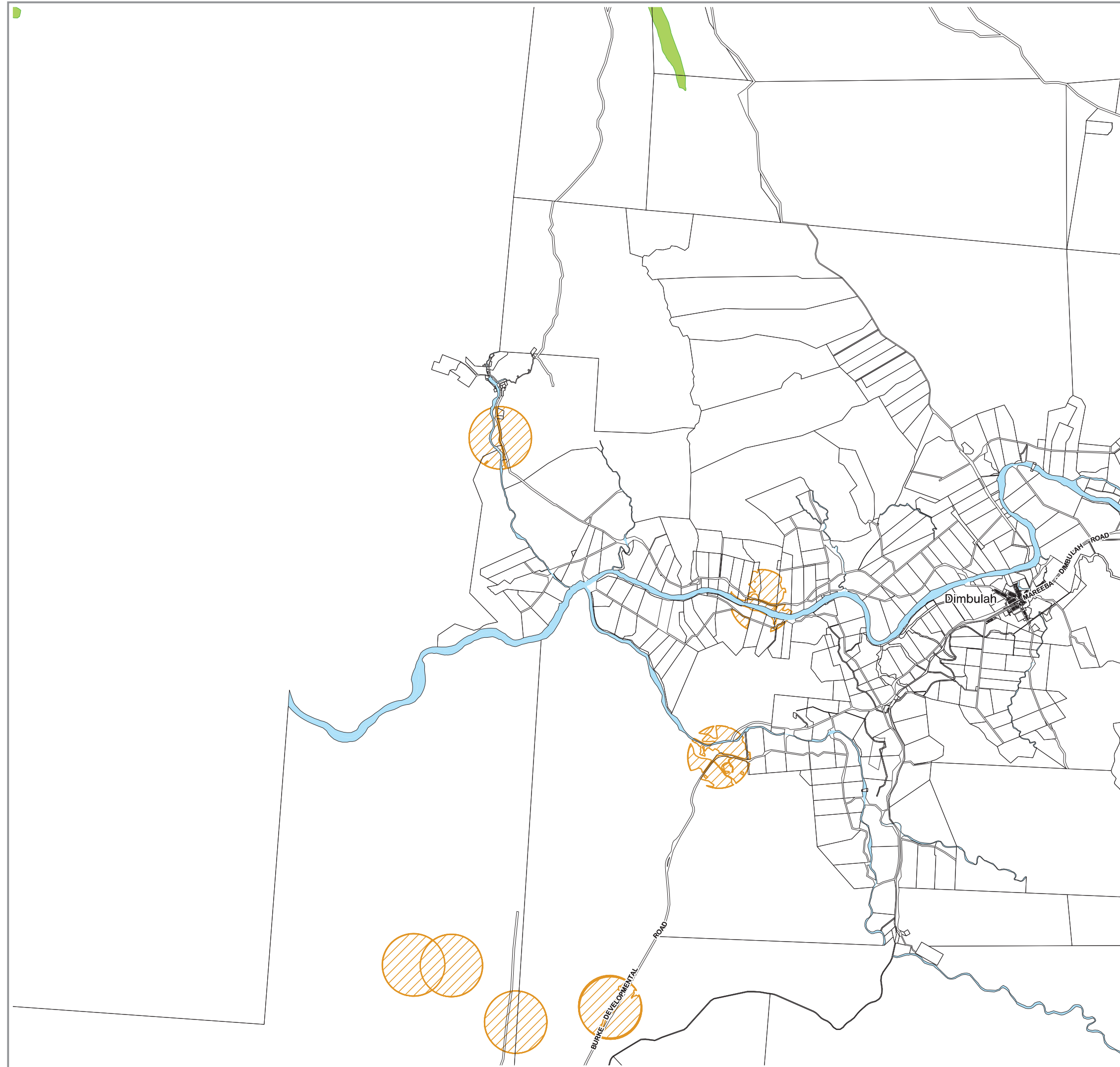


Map Index



Overlay Map Environmental Significance- Dimbulah

OVERLAY MAP - OM004j



LEGEND

Matters of State Environmental Significance

- Protected Area
- Wildlife Habitat
- Regulated Vegetation⁽¹⁾
- High Ecological Significance Wetlands
- High Ecological Significance Wetlands 200 metre Buffer
- Legally Secured Offset Areas

Other Elements

- Cadastre
- Mareeba Shire Coucil Boundary
- Watercourse ⁽²⁾

⁽¹⁾ 'Regulated Vegetation Intersecting a Watercourse' is identified spatially on 'Environmental Significance - Waterways' Overlay Maps OM004p to OM004z.

⁽²⁾ Waterways and Waterway Buffers are identified spatially on 'Environmental Significance - Waterways' Overlay Maps OM004p to OM004z.

Information

Whilst every care is taken to ensure the accuracy of this product, neither the Mareeba Shire Council or the State of Queensland make any representations or warranties about its accuracy, reliability, completeness or suitability for any particular purpose and disclaims all responsibility and all liability (including without limitation, liability in negligence) for all expenses, losses, damages (including indirect or consequential damage) and costs that may occur as a result of the product being inaccurate or incomplete in any way or for any reason.

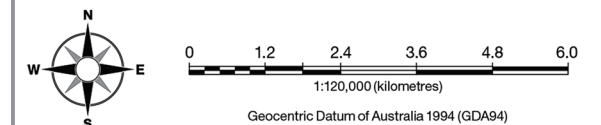
All data depicted on this map has been sourced from either the Mareeba Shire Council or the State of Queensland from the latest datasets available at the time of map compilation.

Map compilation date: January 2016.

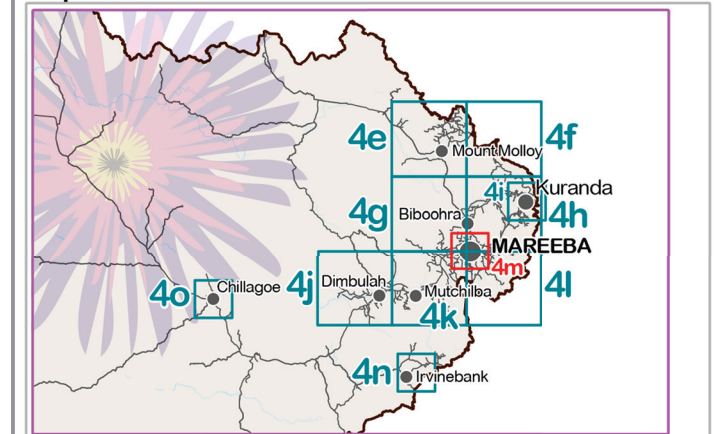
Crown & Council Copyright Reserved.

Note

Where information on the map is obscured by text or other map elements contact Council for a determination.

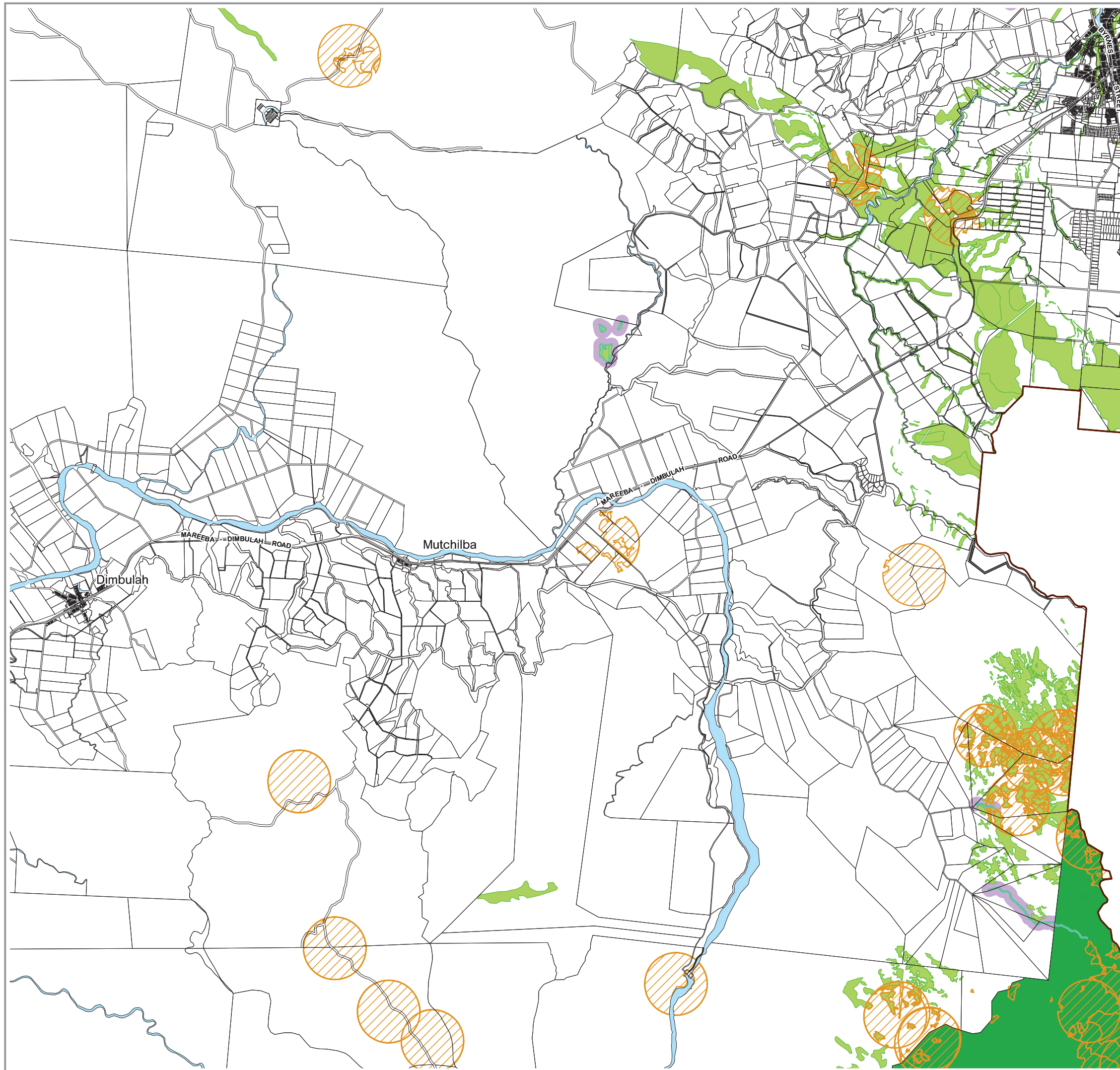


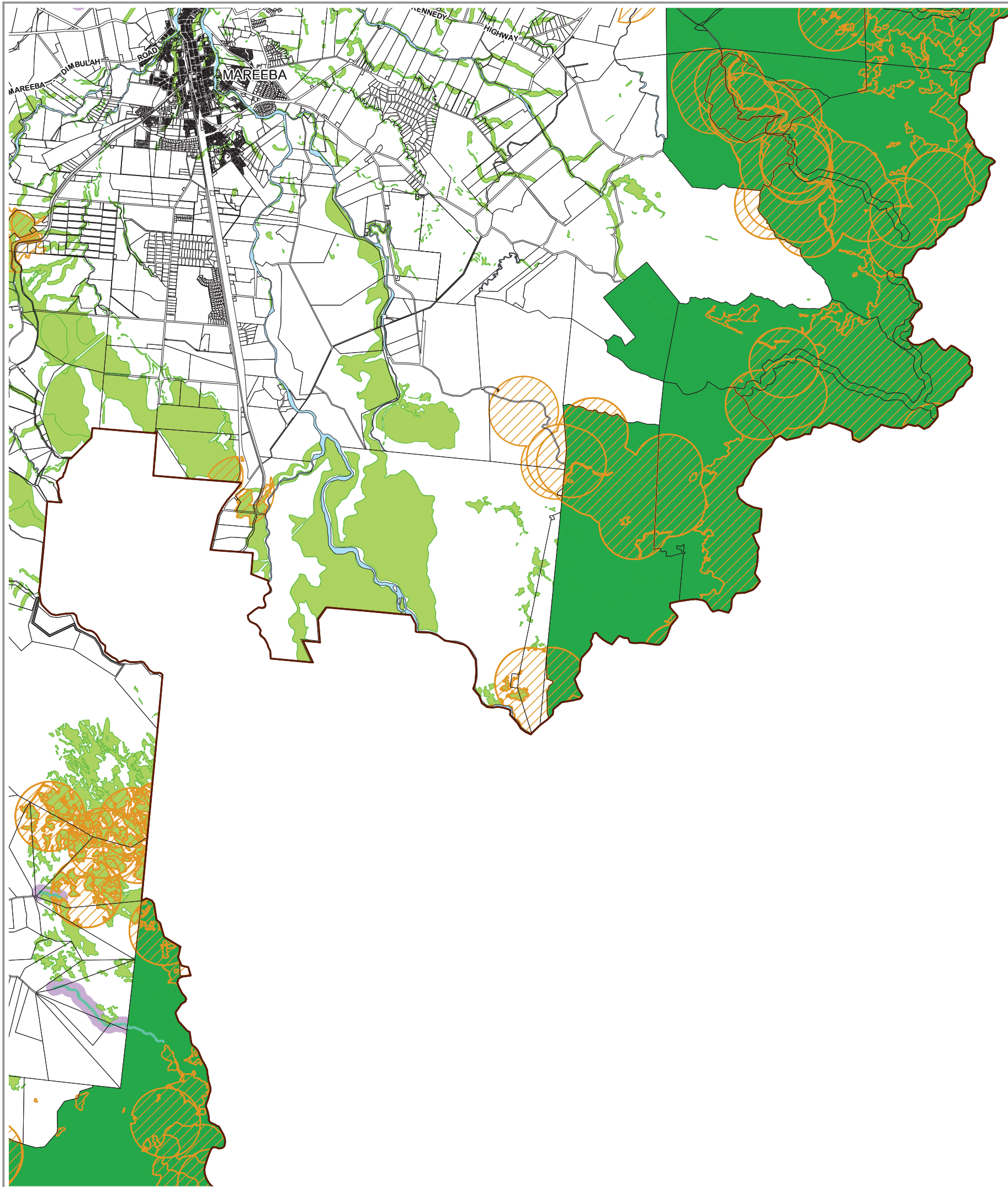
Map Index



Overlay Map Environmental Significance- Mutchilba

OVERLAY MAP - OM004k





LEGEND

Matters of State Environmental Significance

- Protected Area
- Wildlife Habitat
- Regulated Vegetation⁽¹⁾
- High Ecological Significance Wetlands
- High Ecological Significance Wetlands 200 metre Buffer
- Legally Secured Offset Areas

Other Elements

- Cadastre
- Mareeba Shire Coucil Boundary
- Watercourse ⁽²⁾

(1) 'Regulated Vegetation Intersecting a Watercourse' is identified spatially on 'Environmental Significance - Waterways' Overlay Maps OM004p to OM004z.

(2) Waterways and Waterway Buffers are identified spatially on 'Environmental Significance - Waterways' Overlay Maps OM004p to OM004z.

Information

Whilst every care is taken to ensure the accuracy of this product, neither the Mareeba Shire Council or the State of Queensland make any representations or warranties about its accuracy, reliability, completeness or suitability for any particular purpose and disclaims all responsibility and all liability (including without limitation, liability in negligence) for all expenses, losses, damages (including indirect or consequential damage) and costs that may occur as a result of the product being inaccurate or incomplete in any way or for any reason.

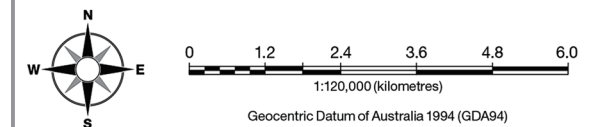
All data depicted on this map has been sourced from either the Mareeba Shire Council or the State of Queensland from the latest datasets available at the time of map compilation.

Map compilation date: January 2016.

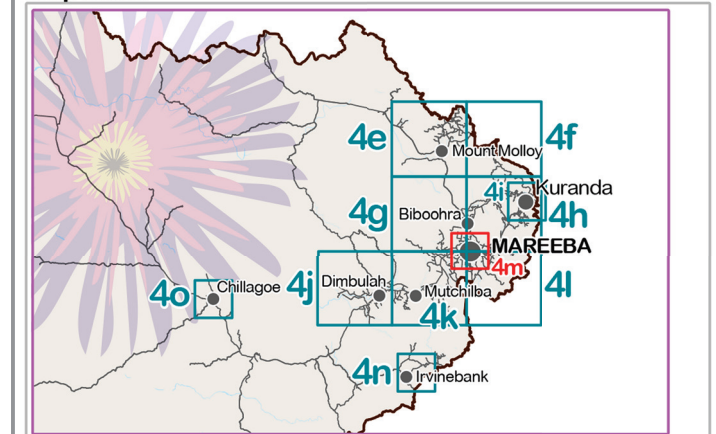
Crown & Council Copyright Reserved.

Note

Where information on the map is obscured by text or other map elements contact Council for a determination.

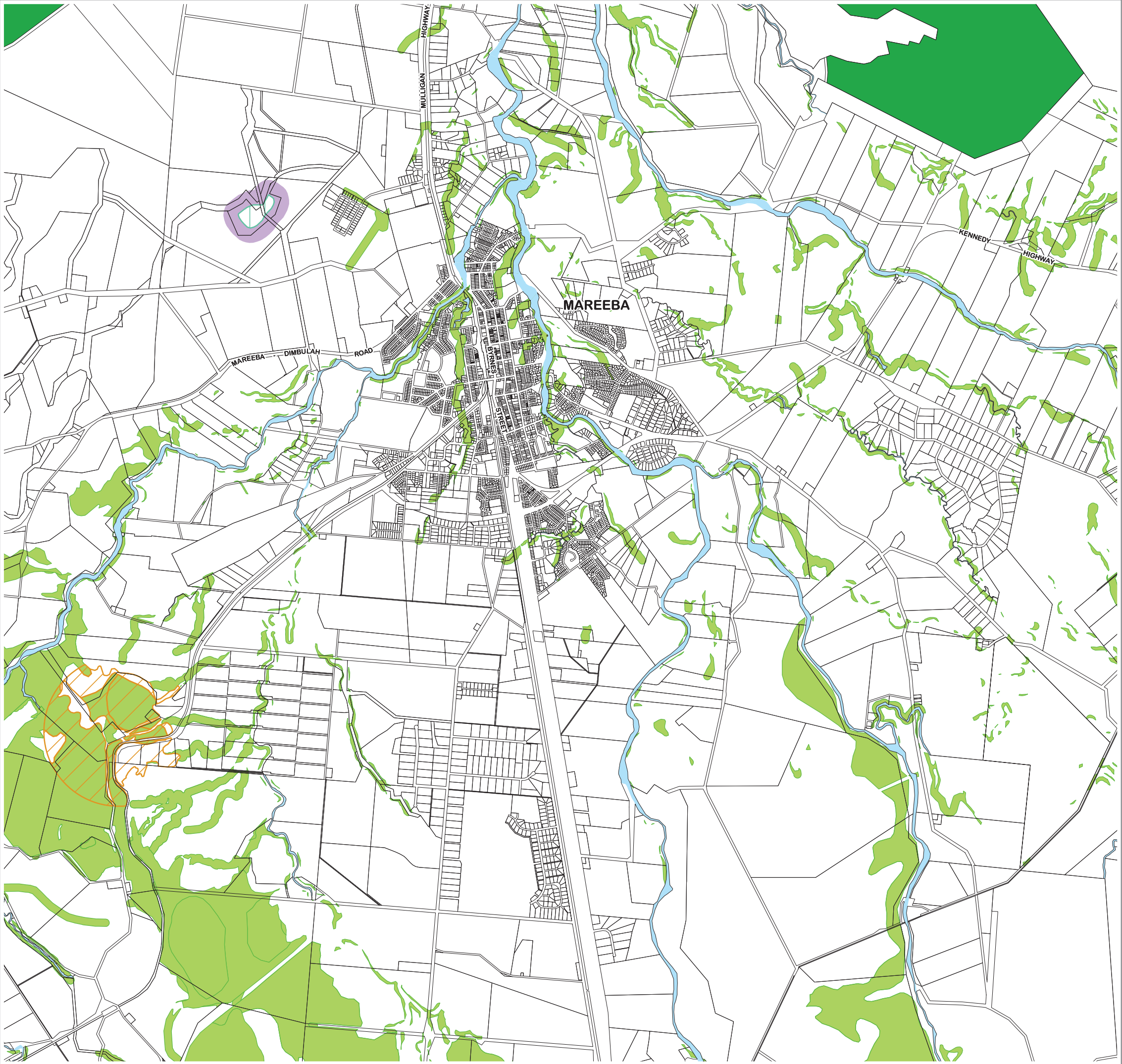


Map Index



Overlay Map Environmental Significance- Mareeba Southeast

OVERLAY MAP - OM004I





OVERLAY MAP - OM004m

LEGEND

Matters of State Environmental Significance

-  Protected Area
-  Wildlife Habitat
-  Regulated Vegetation⁽¹⁾
-  High Ecological Significance Wetlands
-  High Ecological Significance Wetlands 200 metre Buffer
-  Legally Secured Offset Areas

Other Elements

-  Cadastre
-  Mareeba Shire Council Boundary
-  Watercourse⁽²⁾

⁽¹⁾ 'Regulated Vegetation Intersecting a Watercourse' is identified spatially on 'Environmental Significance - Waterways' Overlay Maps OM004p to OM004z.

⁽²⁾ Waterways and Waterway Buffers are identified spatially on 'Environmental Significance - Waterways' Overlay Maps OM004p to OM004z.

Information

Whilst every care is taken to ensure the accuracy of this product, neither the Mareeba Shire Council or the State of Queensland make any representations or warranties about its accuracy, reliability, completeness or suitability for any particular purpose and disclaims all responsibility and all liability (including without limitation, liability in negligence) for all expenses, losses, damages (including indirect or consequential damage) and costs that may occur as a result of the product being inaccurate or incomplete in any way or for any reason.

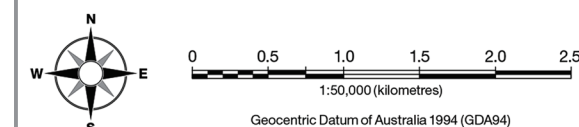
All data depicted on this map has been sourced from either the Mareeba Shire Council or the State of Queensland from the latest datasets available at the time of map compilation.

Map compilation date: January 2016.

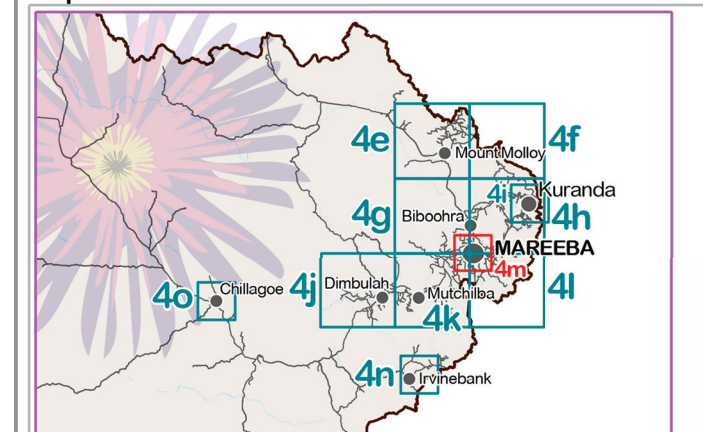
Crown & Council Copyright Reserved.

Note

Where information on the map is obscured by text or other map elements contact Council for a determination.



Map Index



Overlay Map Environmental Significance- Irvinebank

OVERLAY MAP - OM004n

LEGEND

Matters of State Environmental Significance

- Protected Area
- Wildlife Habitat
- Regulated Vegetation⁽¹⁾
- High Ecological Significance Wetlands
- High Ecological Significance Wetlands 200 metre Buffer
- Legally Secured Offset Areas

Other Elements

- Cadastre
- Mareeba Shire Council Boundary
- Watercourse ⁽²⁾

⁽¹⁾ 'Regulated Vegetation Intersecting a Watercourse' is identified spatially on 'Environmental Significance - Waterways' Overlay Maps OM004p to OM004z.

⁽²⁾ Waterways and Waterway Buffers are identified spatially on 'Environmental Significance - Waterways' Overlay Maps OM004p to OM004z.

Information

Whilst every care is taken to ensure the accuracy of this product, neither the Mareeba Shire Council or the State of Queensland make any representations or warranties about its accuracy, reliability, completeness or suitability for any particular purpose and disclaims all responsibility and all liability (including without limitation, liability in negligence) for all expenses, losses, damages (including indirect or consequential damage) and costs that may occur as a result of the product being inaccurate or incomplete in any way or for any reason.

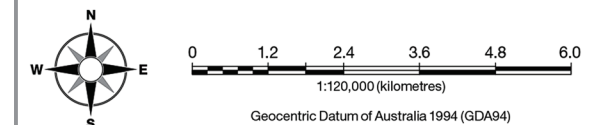
All data depicted on this map has been sourced from either the Mareeba Shire Council or the State of Queensland from the latest datasets available at the time of map compilation.

Map compilation date: January 2016.

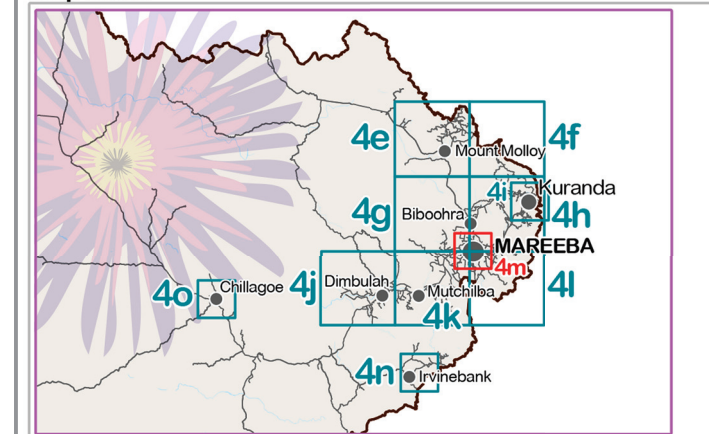
Crown & Council Copyright Reserved.

Note

Where information on the map is obscured by text or other map elements contact Council for a determination.



Map Index



Overlay Map Environmental Significance- Chillagoe

OVERLAY MAP - OM004o

