

## LEGEND

### Modelled Flood Hazard Levels<sup>(1)</sup>

1% AEP Defined Flood Event (DFE):

- Extreme Flood Hazard
- High Flood Hazard
- Significant Flood Hazard
- Low Flood Hazard
- General Extent of Modelled Flood Hazard Levels

### Queensland Floodplain Assessment Overlay Mapping<sup>(2)</sup>

- Potential Flood Hazard Area

### Other

- Cadastre
- Watercourse

<sup>(1)</sup> The Modelled Flood Hazard Levels are sourced from the Queensland Reconstruction Authority - Flood Hazard Mapping - Mareeba, Kuranda, Bibbohra, Bilwon and Koah, 12 April 2013 which models the predicted flood impact of the Defined Flood Event (DFE).

<sup>(2)</sup> In areas outside the limits of the specific flood modelling undertaken in (1) above Flood Hazard Areas are sourced from the State Wide Queensland Floodplain Overlay mapping. These maps have been derived from various state-wide datasets and the result is a spatial extent of where flooding has previously or has the potential to occur. **These maps are not based on any flood model and do not represent a particular flood event.**

### Information

Whilst every care is taken to ensure the accuracy of this product, neither the Mareeba Shire Council or the State of Queensland make any representations or warranties about its accuracy, reliability, completeness or suitability for any particular purpose and disclaims all responsibility and all liability (including without limitation, liability in negligence) for all expenses, losses, damages (including indirect or consequential damage) and costs that may occur as a result of the product being inaccurate or incomplete in any way or for any reason.

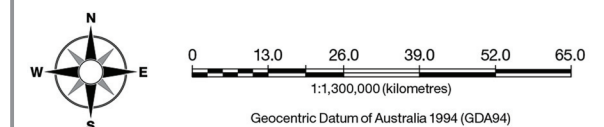
All data depicted on this map has been sourced from either the Mareeba Shire Council or the State of Queensland from the latest datasets available at the time of map compilation.

Map compilation date: August 2015.

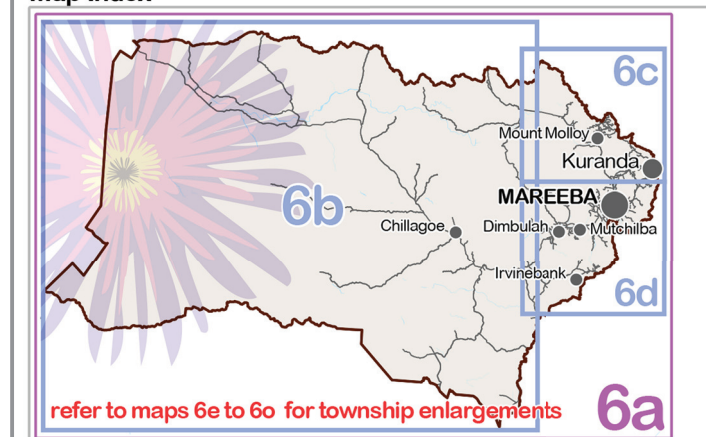
Crown & Council Copyright Reserved.

### Note

Where information on the map is obscured by text or other map elements contact Council for a determination.

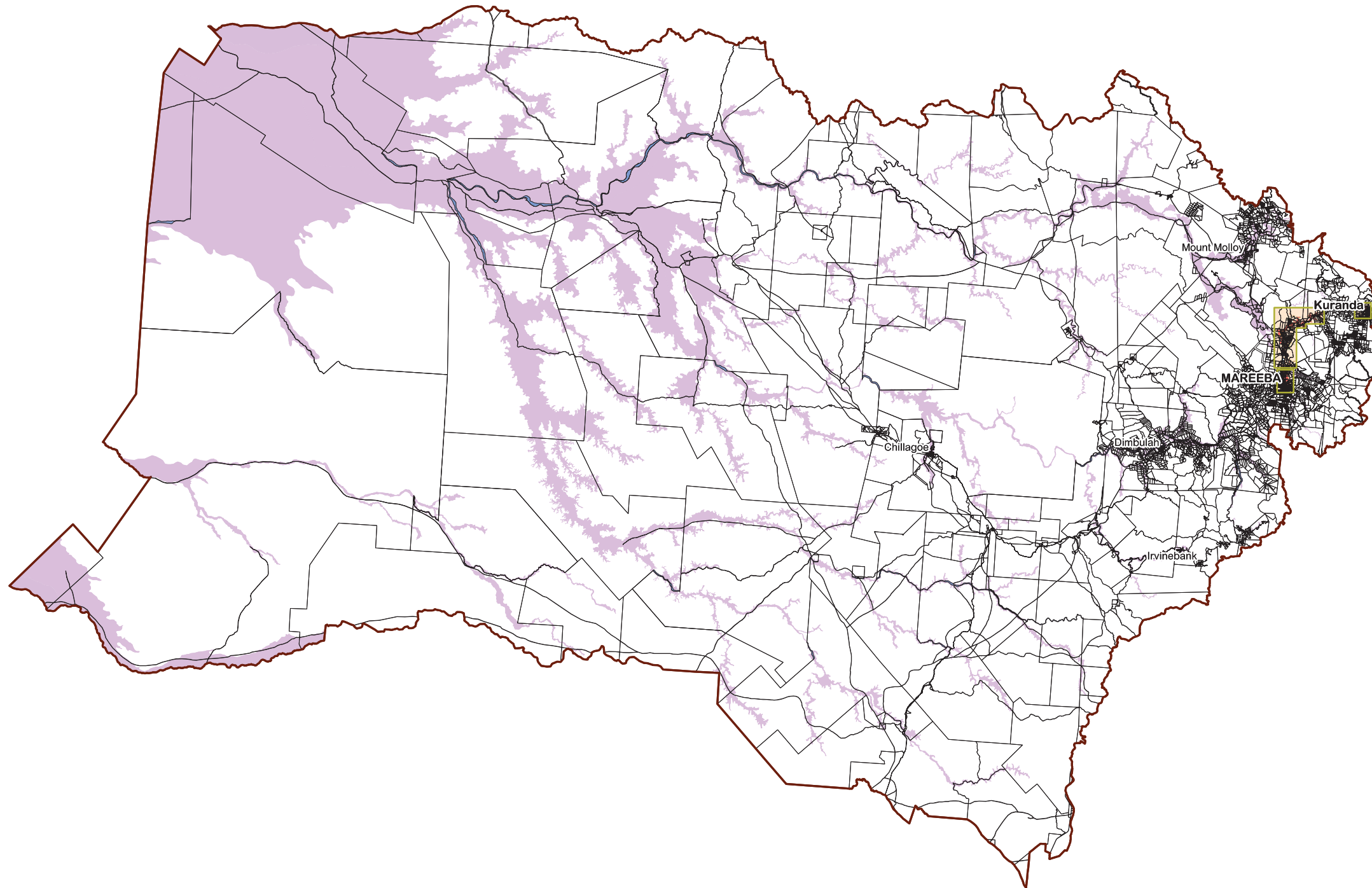


### Map Index



# Overlay Map Flood Hazard- Regionwide

OVERLAY MAP - OM006a



## LEGEND

### Modelled Flood Hazard Levels<sup>(1)</sup>

1% AEP Defined Flood Event (DFE):

- Extreme Flood Hazard
- High Flood Hazard
- Significant Flood Hazard
- Low Flood Hazard
- General Extent of Modelled Flood Hazard Levels

### Queensland Floodplain Assessment Overlay Mapping<sup>(2)</sup>

- Potential Flood Hazard Area

### Other

- Cadastre
- Watercourse

**(1)** The Modelled Flood Hazard Levels are sourced from the Queensland Reconstruction Authority - Flood Hazard Mapping - Mareeba, Kuranda, Bibbohra, Bilwon and Koah, 12 April 2013 which models the predicted flood impact of the Defined Flood Event (DFE).

**(2)** In areas outside the limits of the specific flood modelling undertaken in (1) above Flood Hazard Areas are sourced from the State Wide Queensland Floodplain Overlay mapping. These maps have been derived from various state-wide datasets and the result is a spatial extent of where flooding has previously or has the potential to occur. **These maps are not based on any flood model and do not represent a particular flood event.**

### Information

Whilst every care is taken to ensure the accuracy of this product, neither the Mareeba Shire Council or the State of Queensland make any representations or warranties about its accuracy, reliability, completeness or suitability for any particular purpose and disclaims all responsibility and all liability (including without limitation, liability in negligence) for all expenses, losses, damages (including indirect or consequential damage) and costs that may occur as a result of the product being inaccurate or incomplete in any way or for any reason.

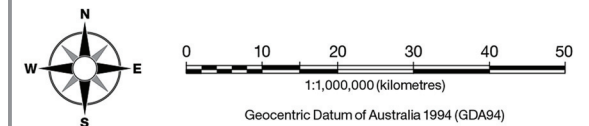
All data depicted on this map has been sourced from either the Mareeba Shire Council or the State of Queensland from the latest datasets available at the time of map compilation.

Map compilation date: August 2015.

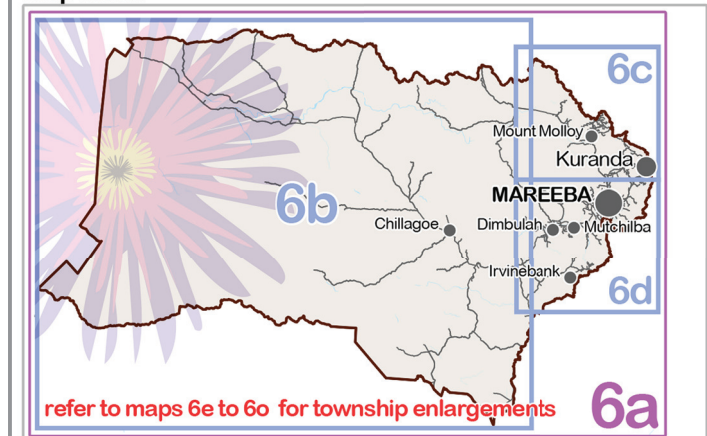
Crown & Council Copyright Reserved.

### Note

Where information on the map is obscured by text or other map elements contact Council for a determination.

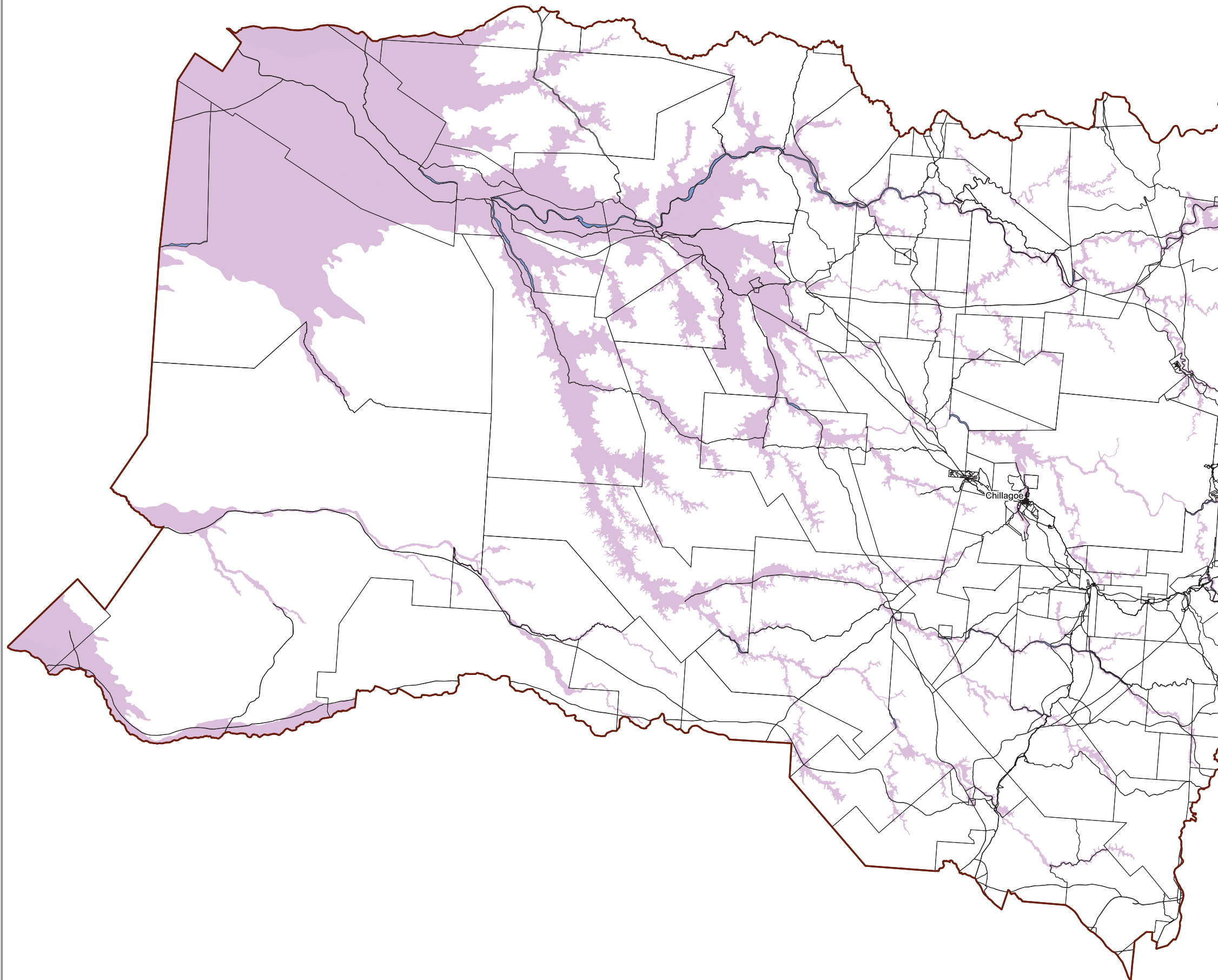


### Map Index



# Overlay Map Flood Hazard- Central and Western Region

OVERLAY MAP - OM006b



## LEGEND

### Modelled Flood Hazard Levels<sup>(1)</sup>

1% AEP Defined Flood Event (DFE):

- Extreme Flood Hazard
- High Flood Hazard
- Significant Flood Hazard
- Low Flood Hazard
- General Extent of Modelled Flood Hazard Levels

### Queensland Floodplain Assessment Overlay Mapping<sup>(2)</sup>

- Potential Flood Hazard Area

### Other

- Cadastre
- Watercourse

**(1)** The Modelled Flood Hazard Levels are sourced from the Queensland Reconstruction Authority - Flood Hazard Mapping - Mareeba, Kuranda, Bibbohra, Bilwon and Koah, 12 April 2013 which models the predicted flood impact of the Defined Flood Event (DFE).

**(2)** In areas outside the limits of the specific flood modelling undertaken in (1) above Flood Hazard Areas are sourced from the State Wide Queensland Floodplain Overlay mapping. These maps have been derived from various state-wide datasets and the result is a spatial extent of where flooding has previously or has the potential to occur. **These maps are not based on any flood model and do not represent a particular flood event.**

### Information

Whilst every care is taken to ensure the accuracy of this product, neither the Mareeba Shire Council or the State of Queensland make any representations or warranties about its accuracy, reliability, completeness or suitability for any particular purpose and disclaims all responsibility and all liability (including without limitation, liability in negligence) for all expenses, losses, damages (including indirect or consequential damage) and costs that may occur as a result of the product being inaccurate or incomplete in any way or for any reason.

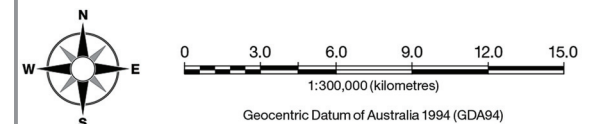
All data depicted on this map has been sourced from either the Mareeba Shire Council or the State of Queensland from the latest datasets available at the time of map compilation.

Map compilation date: August 2015.

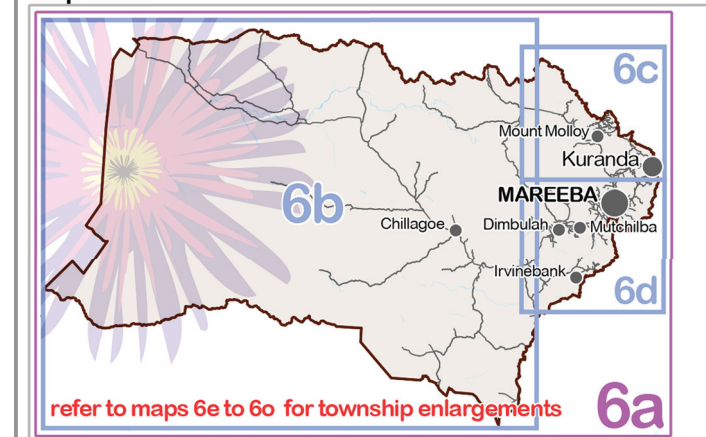
Crown & Council Copyright Reserved.

### Note

Where information on the map is obscured by text or other map elements contact Council for a determination.

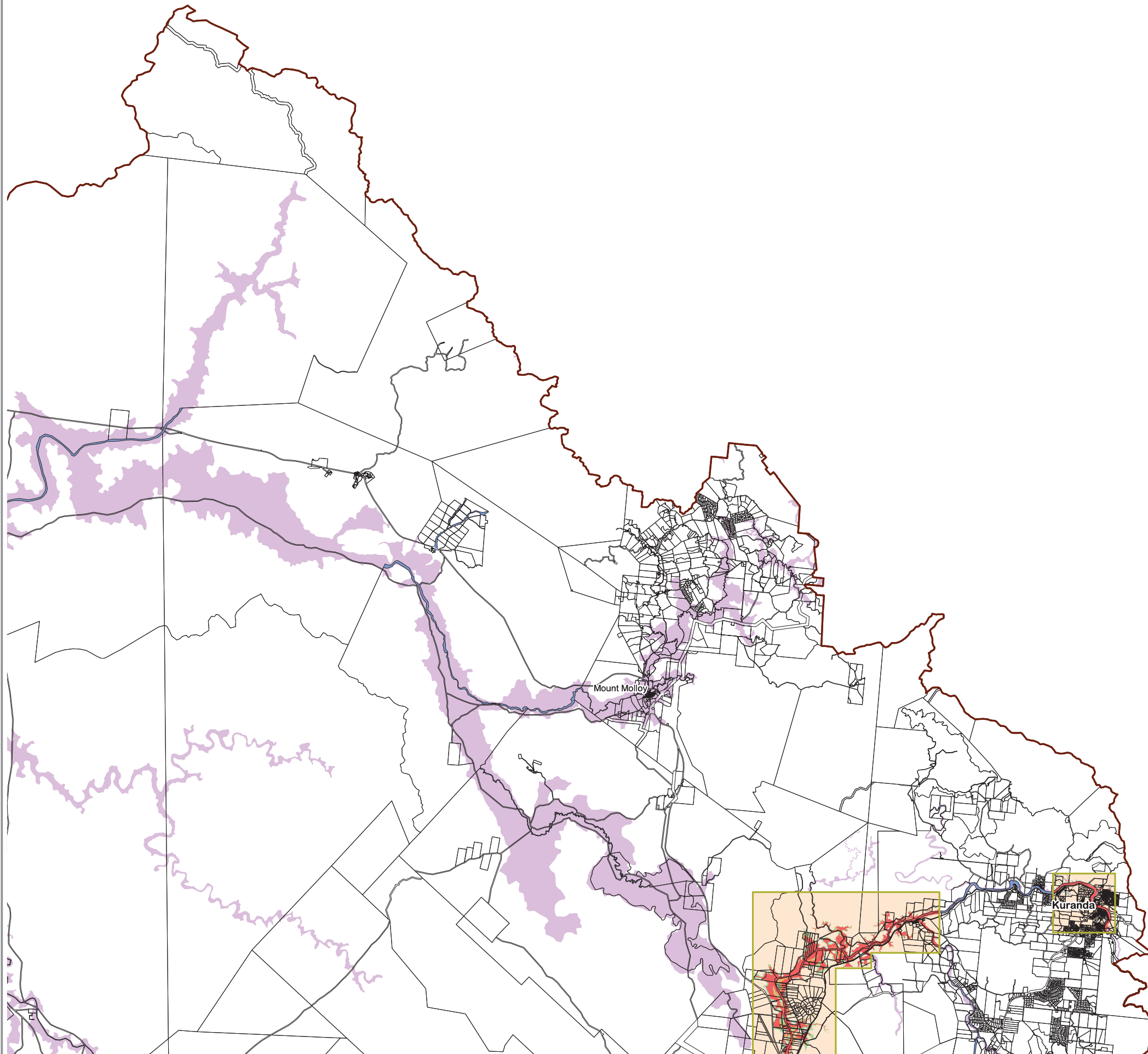


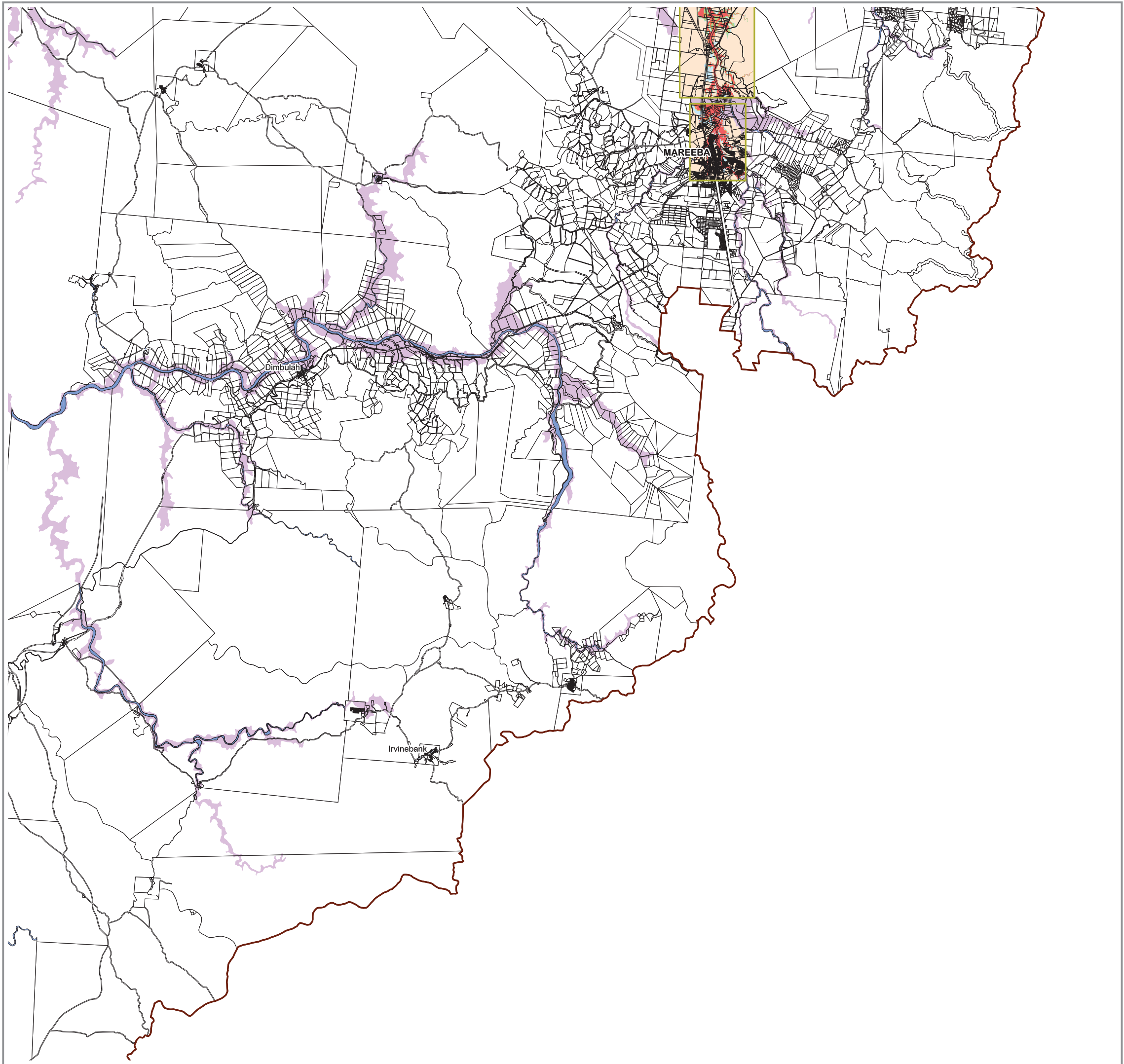
### Map Index



# Overlay Map Flood Hazard- Northeastern Region

OVERLAY MAP - OM006c





**LEGEND**

**Modelled Flood Hazard Levels<sup>(1)</sup>**

1% AEP Defined Flood Event (DFE):

- Extreme Flood Hazard
- High Flood Hazard
- Significant Flood Hazard
- Low Flood Hazard
- General Extent of Modelled Flood Hazard Levels

**Queensland Floodplain Assessment Overlay Mapping<sup>(2)</sup>**

- Potential Flood Hazard Area

**Other**

- Cadastre
- Watercourse

<sup>(1)</sup> The Modelled Flood Hazard Levels are sourced from the Queensland Reconstruction Authority - Flood Hazard Mapping - Mareeba, Kuranda, Bibbohra, Bilwon and Koah, 12 April 2013 which models the predicted flood impact of the Defined Flood Event (DFE).

<sup>(2)</sup> In areas outside the limits of the specific flood modelling undertaken in (1) above Flood Hazard Areas are sourced from the State Wide Queensland Floodplain Overlay mapping. These maps have been derived from various state-wide datasets and the result is a spatial extent of where flooding has previously or has the potential to occur. **These maps are not based on any flood model and do not represent a particular flood event.**

**Information**

Whilst every care is taken to ensure the accuracy of this product, neither the Mareeba Shire Council or the State of Queensland make any representations or warranties about its accuracy, reliability, completeness or suitability for any particular purpose and disclaims all responsibility and all liability (including without limitation, liability in negligence) for all expenses, losses, damages (including indirect or consequential damage) and costs that may occur as a result of the product being inaccurate or incomplete in any way or for any reason.

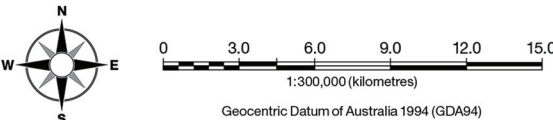
All data depicted on this map has been sourced from either the Mareeba Shire Council or the State of Queensland from the latest datasets available at the time of map compilation.

Map compilation date: August 2015.

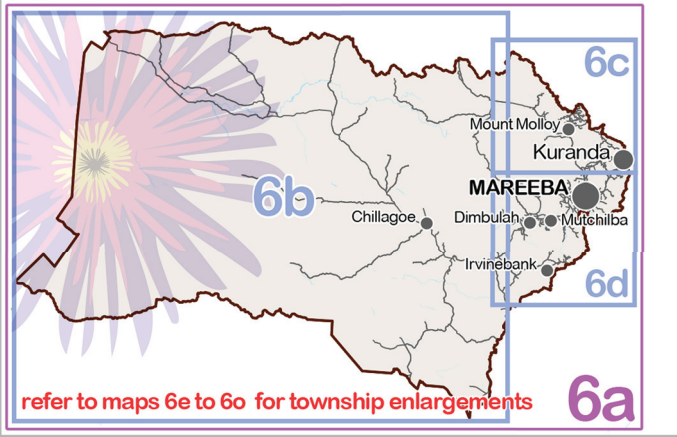
Crown & Council Copyright Reserved.

**Note**

Where information on the map is obscured by text or other map elements contact Council for a determination.

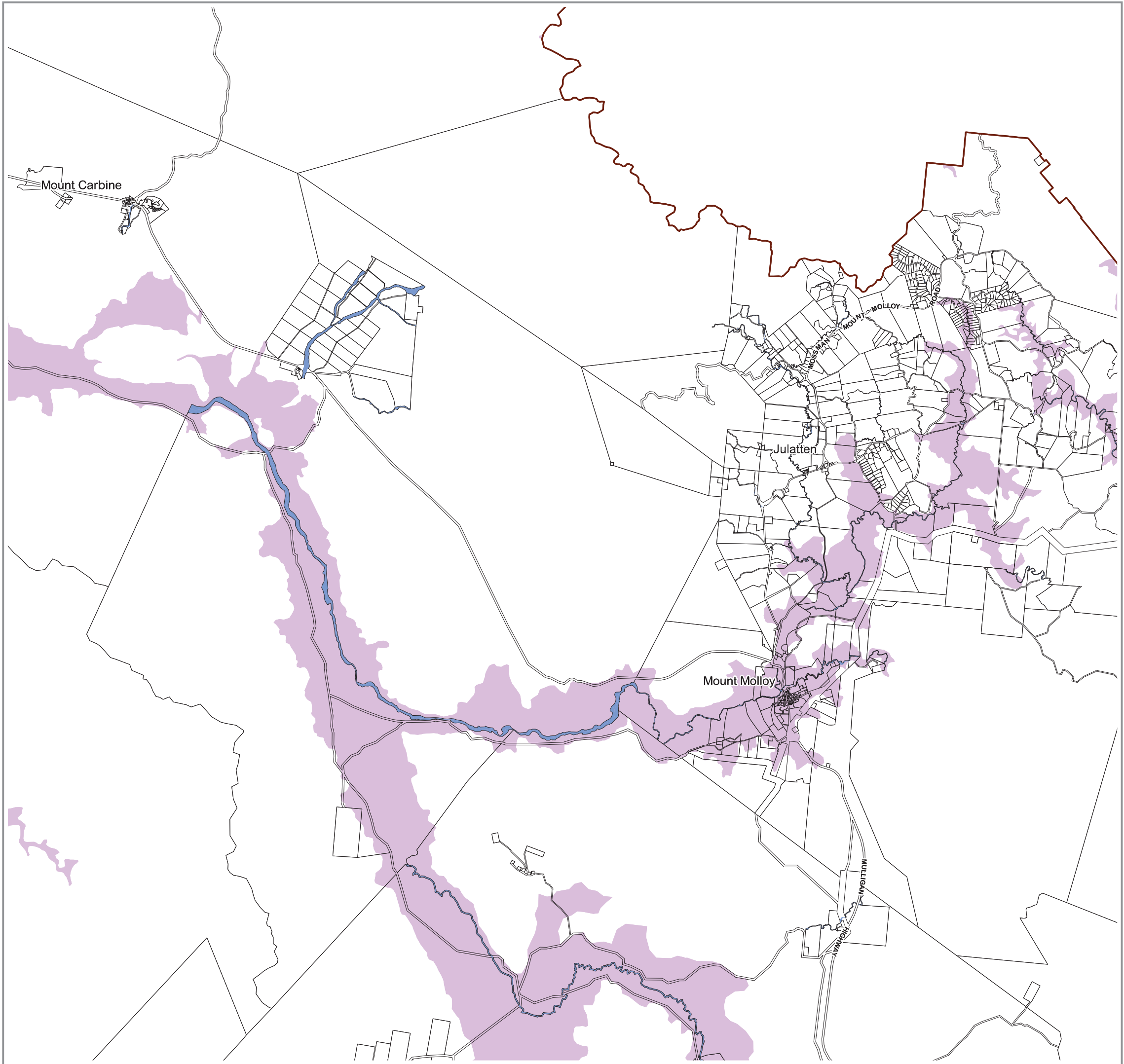


**Map Index**



Overlay Map  
Flood Hazard-  
Southeastern Region

OVERLAY MAP - OM006d



Mareeba  
SHIRE COUNCIL

#### LEGEND

##### Modelled Flood Hazard Levels<sup>(1)</sup>

1% AEP Defined Flood Event (DFE):

- Extreme Flood Hazard
- High Flood Hazard
- Significant Flood Hazard
- Low Flood Hazard
- General Extent of Modelled Flood Hazard Levels

##### Queensland Floodplain Assessment Overlay Mapping<sup>(2)</sup>

- Potential Flood Hazard Area

##### Other

- Cadastre
- Watercourse

<sup>(1)</sup> The Modelled Flood Hazard Levels are sourced from the Queensland Reconstruction Authority - Flood Hazard Mapping - Mareeba, Kuranda, Bibbohra, Bilvon and Koah, 12 April 2013 which models the predicted flood impact of the Defined Flood Event (DFE).

<sup>(2)</sup> In areas outside the limits of the specific flood modelling undertaken in (1) above Flood Hazard Areas are sourced from the State Wide Queensland Floodplain Overlay mapping. These maps have been derived from various state-wide datasets and the result is a spatial extent of where flooding has previously or has the potential to occur. **These maps are not based on any flood model and do not represent a particular flood event.**

#### Information

Whilst every care is taken to ensure the accuracy of this product, neither the Mareeba Shire Council or the State of Queensland make any representations or warranties about its accuracy, reliability, completeness or suitability for any particular purpose and disclaims all responsibility and all liability (including without limitation, liability in negligence) for all expenses, losses, damages (including indirect or consequential damage) and costs that may occur as a result of the product being inaccurate or incomplete in any way or for any reason.

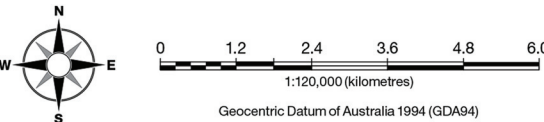
All data depicted on this map has been sourced from either the Mareeba Shire Council or the State of Queensland from the latest datasets available at the time of map compilation.

Map compilation date: August 2015.

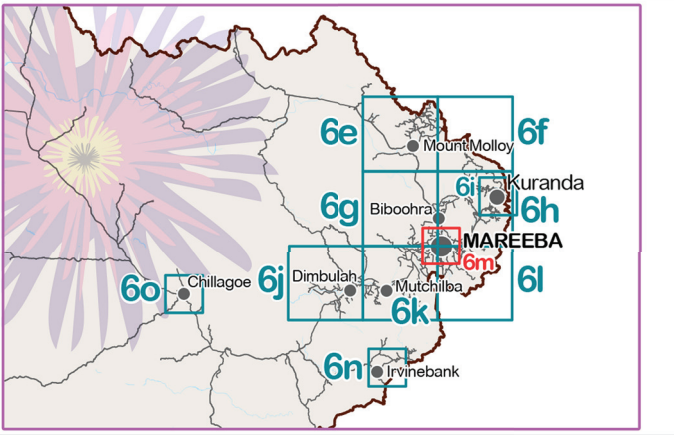
Crown & Council Copyright Reserved.

#### Note

Where information on the map is obscured by text or other map elements contact Council for a determination.

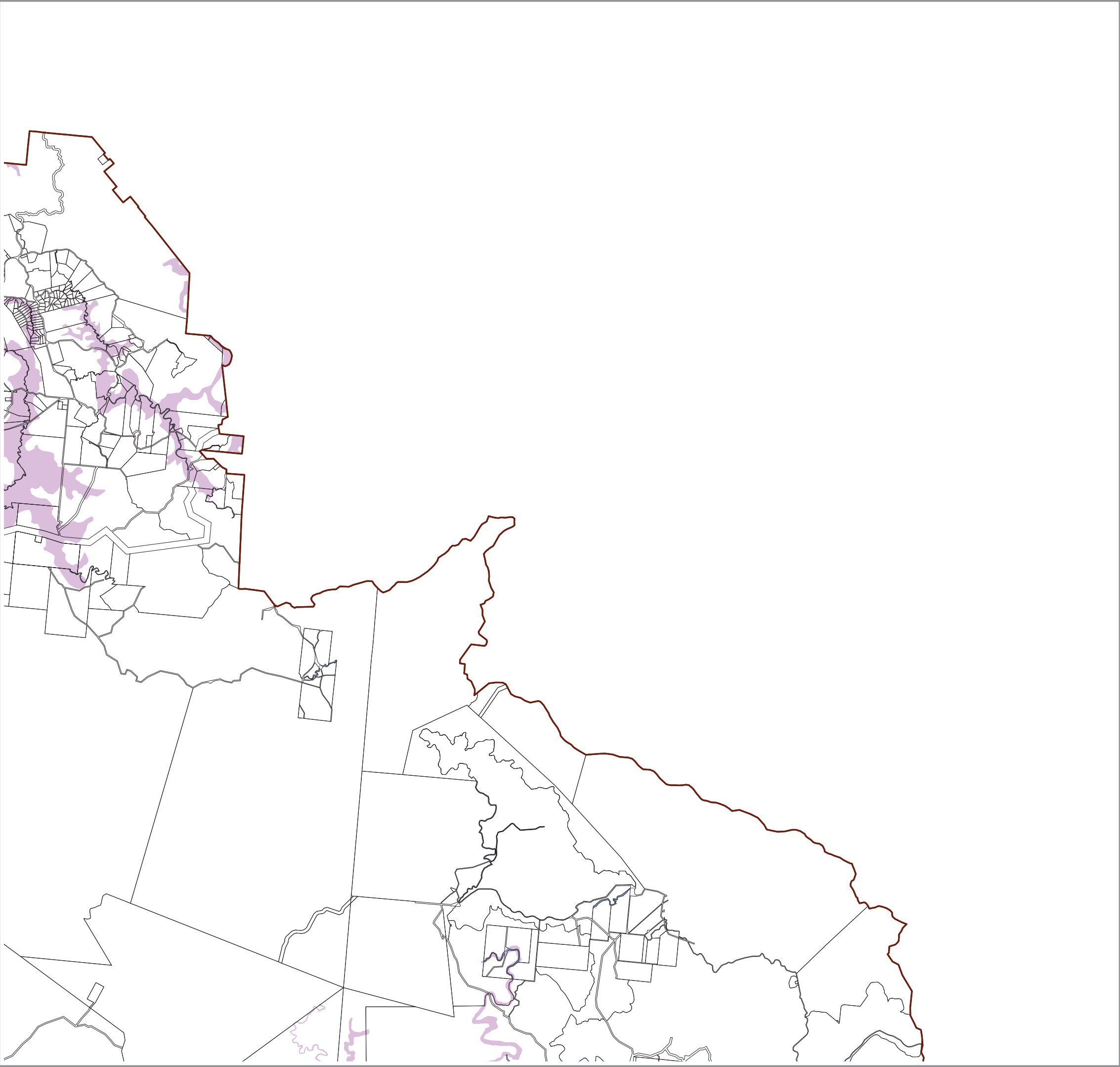


#### Map Index



Overlay Map  
Flood Hazard-  
Mount Molloy

OVERLAY MAP - OM006e



**LEGEND**

**Modelled Flood Hazard Levels<sup>(1)</sup>**

1% AEP Defined Flood Event (DFE):

- Extreme Flood Hazard
- High Flood Hazard
- Significant Flood Hazard
- Low Flood Hazard
- General Extent of Modelled Flood Hazard Levels

**Queensland Floodplain Assessment Overlay Mapping<sup>(2)</sup>**

- Potential Flood Hazard Area

**Other**

- Cadastre
- Watercourse

- (1)** The Modelled Flood Hazard Levels are sourced from the Queensland Reconstruction Authority - Flood Hazard Mapping - Mareeba, Kuranda, Bibbohra, Bilwon and Koah, 12 April 2013 which models the predicted flood impact of the Defined Flood Event (DFE).
- (2)** In areas outside the limits of the specific flood modelling undertaken in (1) above Flood Hazard Areas are sourced from the State Wide Queensland Floodplain Overlay mapping. These maps have been derived from various state-wide datasets and the result is a spatial extent of where flooding has previously or has the potential to occur. **These maps are not based on any flood model and do not represent a particular flood event.**

**Information**

Whilst every care is taken to ensure the accuracy of this product, neither the Mareeba Shire Council or the State of Queensland make any representations or warranties about its accuracy, reliability, completeness or suitability for any particular purpose and disclaims all responsibility and all liability (including without limitation, liability in negligence) for all expenses, losses, damages (including indirect or consequential damage) and costs that may occur as a result of the product being inaccurate or incomplete in any way or for any reason.

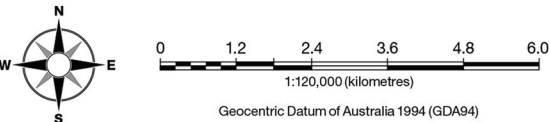
All data depicted on this map has been sourced from either the Mareeba Shire Council or the State of Queensland from the latest datasets available at the time of map compilation.

Map compilation date: August 2015.

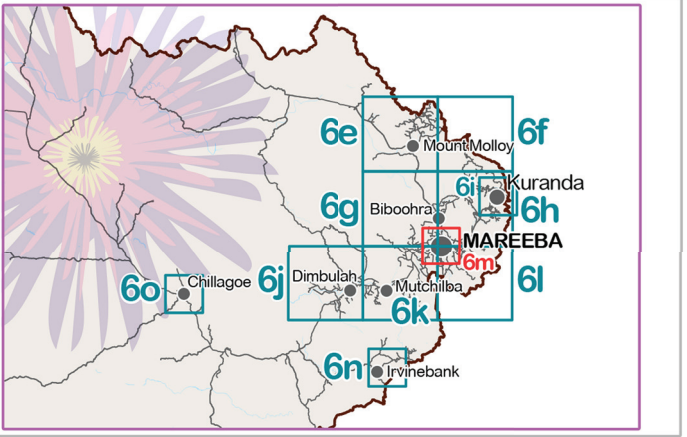
Crown & Council Copyright Reserved.

**Note**

Where information on the map is obscured by text or other map elements contact Council for a determination.



**Map Index**



Overlay Map  
Flood Hazard-  
Monna Mona

**OVERLAY MAP - OM006f**

## LEGEND

### Modelled Flood Hazard Levels<sup>(1)</sup>

1% AEP Defined Flood Event (DFE):

- Extreme Flood Hazard
- High Flood Hazard
- Significant Flood Hazard
- Low Flood Hazard
- General Extent of Modelled Flood Hazard Levels

### Queensland Floodplain Assessment Overlay Mapping<sup>(2)</sup>

- Potential Flood Hazard Area

### Other

- Cadastre
- Watercourse

**(1)** The Modelled Flood Hazard Levels are sourced from the Queensland Reconstruction Authority - Flood Hazard Mapping - Mareeba, Kuranda, Bibbohra, Bilwon and Koah, 12 April 2013 which models the predicted flood impact of the Defined Flood Event (DFE).

**(2)** In areas outside the limits of the specific flood modelling undertaken in (1) above Flood Hazard Areas are sourced from the State Wide Queensland Floodplain Overlay mapping. These maps have been derived from various state-wide datasets and the result is a spatial extent of where flooding has previously or has the potential to occur. **These maps are not based on any flood model and do not represent a particular flood event.**

### Information

Whilst every care is taken to ensure the accuracy of this product, neither the Mareeba Shire Council or the State of Queensland make any representations or warranties about its accuracy, reliability, completeness or suitability for any particular purpose and disclaims all responsibility and all liability (including without limitation, liability in negligence) for all expenses, losses, damages (including indirect or consequential damage) and costs that may occur as a result of the product being inaccurate or incomplete in any way or for any reason.

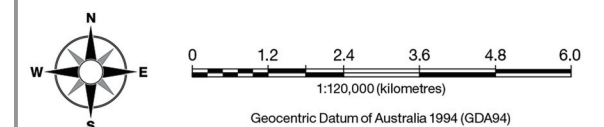
All data depicted on this map has been sourced from either the Mareeba Shire Council or the State of Queensland from the latest datasets available at the time of map compilation.

Map compilation date: August 2015.

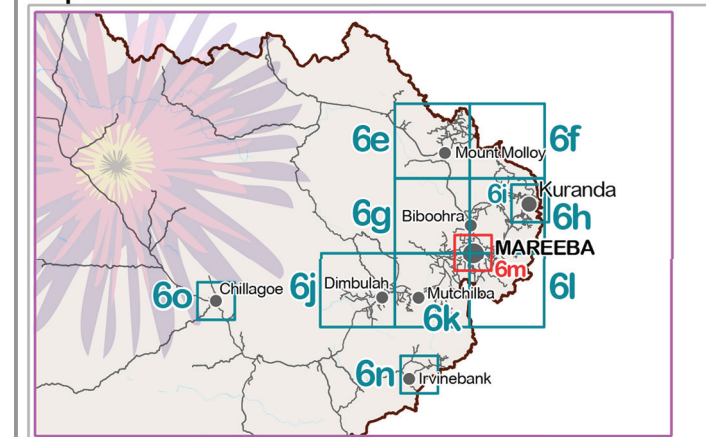
Crown & Council Copyright Reserved.

### Note

Where information on the map is obscured by text or other map elements contact Council for a determination.

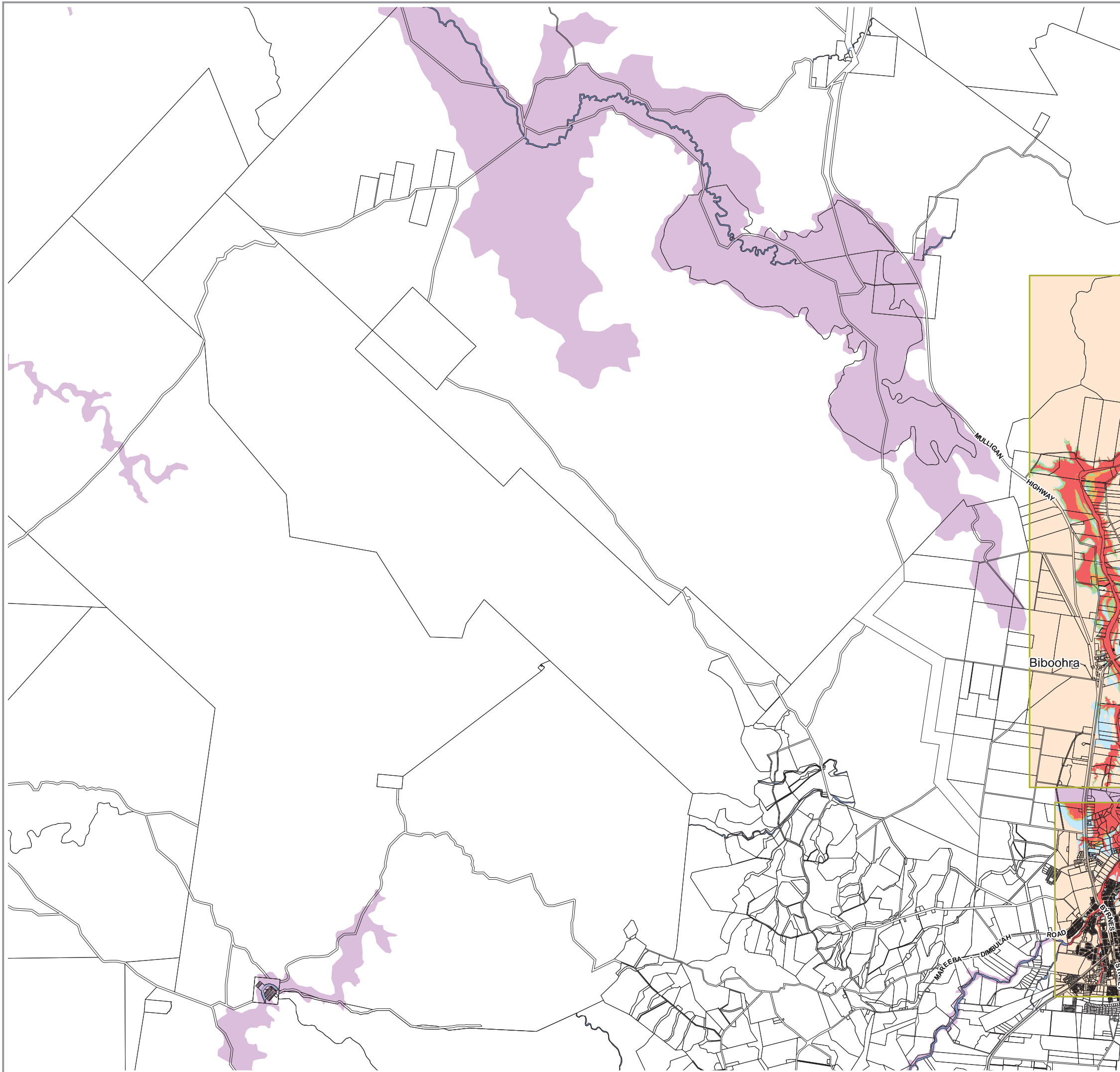


### Map Index



## Overlay Map Flood Hazard- Southedge

**OVERLAY MAP - OM006g**



## LEGEND

### Modelled Flood Hazard Levels<sup>(1)</sup>

1% AEP Defined Flood Event (DFE):

- Extreme Flood Hazard
- High Flood Hazard
- Significant Flood Hazard
- Low Flood Hazard
- General Extent of Modelled Flood Hazard Levels

### Queensland Floodplain Assessment Overlay Mapping<sup>(2)</sup>

- Potential Flood Hazard Area

### Other

- Cadastre
- Watercourse

<sup>(1)</sup> The Modelled Flood Hazard Levels are sourced from the Queensland Reconstruction Authority - Flood Hazard Mapping - Mareeba, Kuranda, Bibbohra, Bilvon and Koah, 12 April 2013 which models the predicted flood impact of the Defined Flood Event (DFE).

<sup>(2)</sup> In areas outside the limits of the specific flood modelling undertaken in (1) above Flood Hazard Areas are sourced from the State Wide Queensland Floodplain Overlay mapping. These maps have been derived from various state-wide datasets and the result is a spatial extent of where flooding has previously or has the potential to occur. **These maps are not based on any flood model and do not represent a particular flood event.**

### Information

Whilst every care is taken to ensure the accuracy of this product, neither the Mareeba Shire Council or the State of Queensland make any representations or warranties about its accuracy, reliability, completeness or suitability for any particular purpose and disclaims all responsibility and all liability (including without limitation, liability in negligence) for all expenses, losses, damages (including indirect or consequential damage) and costs that may occur as a result of the product being inaccurate or incomplete in any way or for any reason.

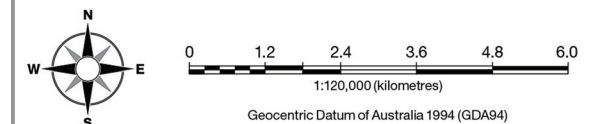
All data depicted on this map has been sourced from either the Mareeba Shire Council or the State of Queensland from the latest datasets available at the time of map compilation.

Map compilation date: August 2015.

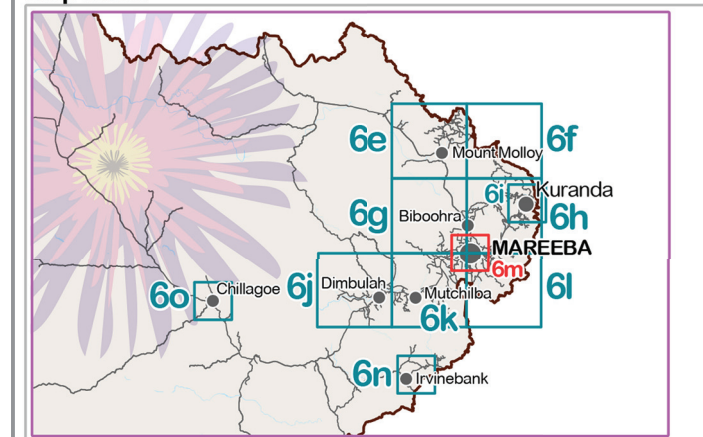
Crown & Council Copyright Reserved.

### Note

Where information on the map is obscured by text or other map elements contact Council for a determination.

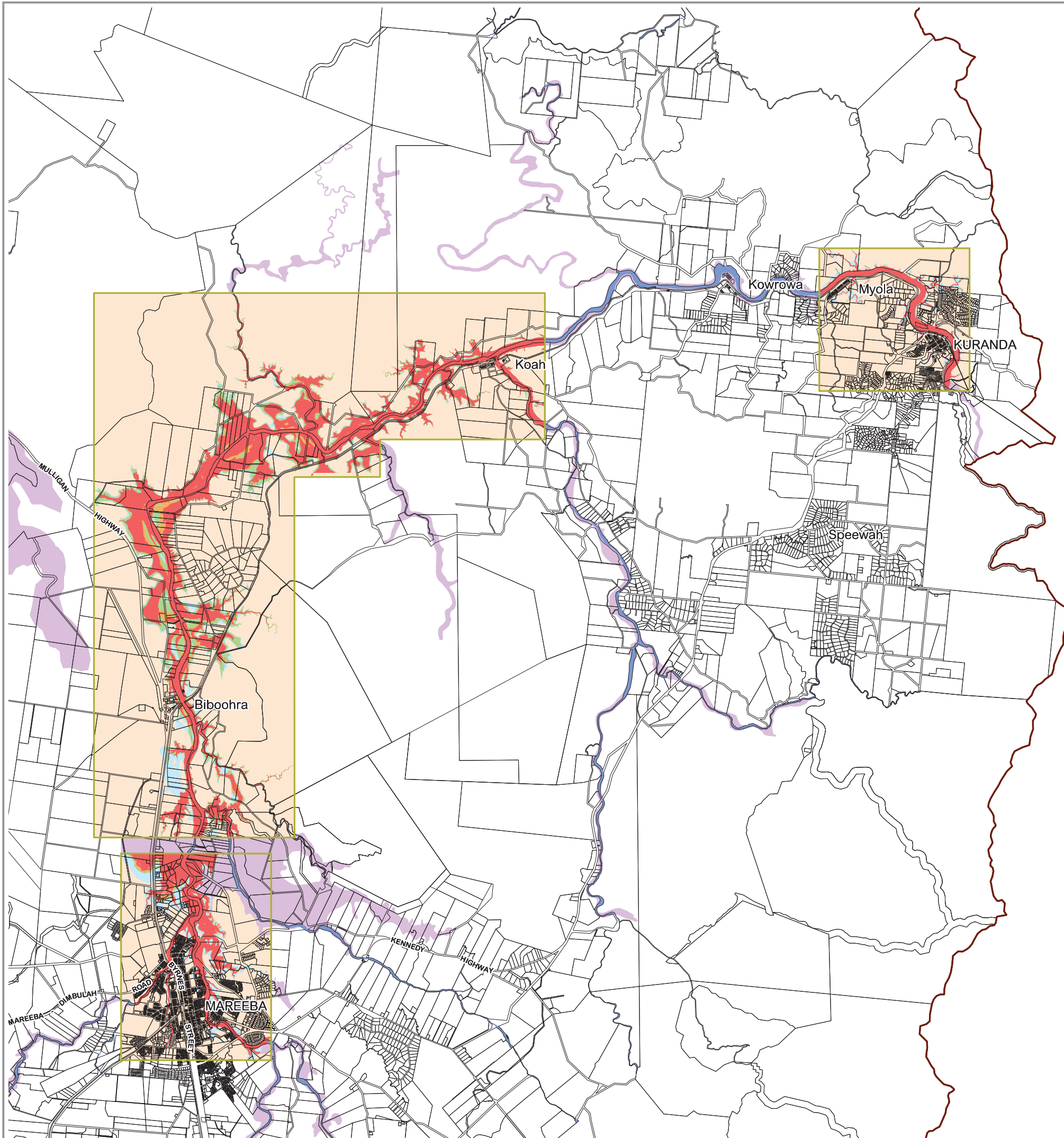


### Map Index



## Overlay Map Flood Hazard- Speedwah

OVERLAY MAP - OM006h



## LEGEND

### Modelled Flood Hazard Levels<sup>(1)</sup>

1% AEP Defined Flood Event (DFE):

- Extreme Flood Hazard
- High Flood Hazard
- Significant Flood Hazard
- Low Flood Hazard
- General Extent of Modelled Flood Hazard Levels

### Queensland Floodplain Assessment Overlay Mapping<sup>(2)</sup>

- Potential Flood Hazard Area

### Other

- Cadastre
- Watercourse

<sup>(1)</sup> The Modelled Flood Hazard Levels are sourced from the Queensland Reconstruction Authority - Flood Hazard Mapping - Mareeba, Kuranda, Bibbohra, Bilwon and Koah, 12 April 2013 which models the predicted flood impact of the Defined Flood Event (DFE).

<sup>(2)</sup> In areas outside the limits of the specific flood modelling undertaken in (1) above Flood Hazard Areas are sourced from the State Wide Queensland Floodplain Overlay mapping. These maps have been derived from various state-wide datasets and the result is a spatial extent of where flooding has previously or has the potential to occur. **These maps are not based on any flood model and do not represent a particular flood event.**

### Information

Whilst every care is taken to ensure the accuracy of this product, neither the Mareeba Shire Council or the State of Queensland make any representations or warranties about its accuracy, reliability, completeness or suitability for any particular purpose and disclaims all responsibility and all liability (including without limitation, liability in negligence) for all expenses, losses, damages (including indirect or consequential damage) and costs that may occur as a result of the product being inaccurate or incomplete in any way or for any reason.

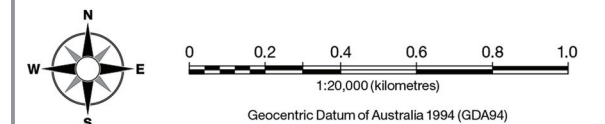
All data depicted on this map has been sourced from either the Mareeba Shire Council or the State of Queensland from the latest datasets available at the time of map compilation.

Map compilation date: August 2015.

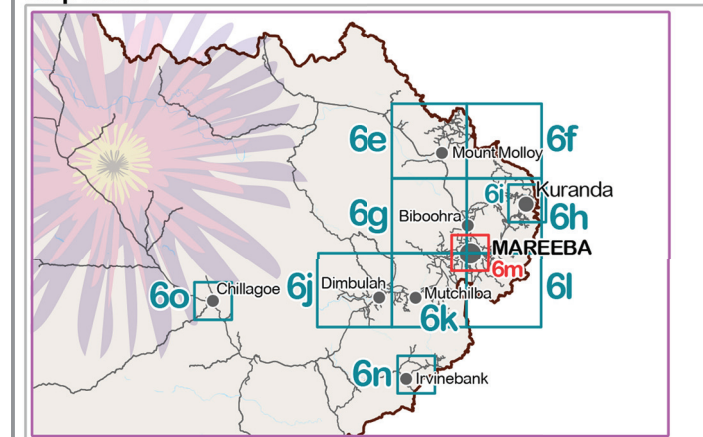
Crown & Council Copyright Reserved.

### Note

Where information on the map is obscured by text or other map elements contact Council for a determination.



### Map Index



## Overlay Map Flood Hazard- Kuranda

OVERLAY MAP - OM006i



## LEGEND

### Modelled Flood Hazard Levels<sup>(1)</sup>

1% AEP Defined Flood Event (DFE):

- Extreme Flood Hazard
- High Flood Hazard
- Significant Flood Hazard
- Low Flood Hazard
- General Extent of Modelled Flood Hazard Levels

### Queensland Floodplain Assessment Overlay Mapping<sup>(2)</sup>

- Potential Flood Hazard Area

### Other

- Cadastre
- Watercourse

**(1)** The Modelled Flood Hazard Levels are sourced from the Queensland Reconstruction Authority - Flood Hazard Mapping - Mareeba, Kuranda, Bibbohra, Bilwon and Koah, 12 April 2013 which models the predicted flood impact of the Defined Flood Event (DFE).

**(2)** In areas outside the limits of the specific flood modelling undertaken in (1) above Flood Hazard Areas are sourced from the State Wide Queensland Floodplain Overlay mapping. These maps have been derived from various state-wide datasets and the result is a spatial extent of where flooding has previously or has the potential to occur. **These maps are not based on any flood model and do not represent a particular flood event.**

### Information

Whilst every care is taken to ensure the accuracy of this product, neither the Mareeba Shire Council or the State of Queensland make any representations or warranties about its accuracy, reliability, completeness or suitability for any particular purpose and disclaims all responsibility and all liability (including without limitation, liability in negligence) for all expenses, losses, damages (including indirect or consequential damage) and costs that may occur as a result of the product being inaccurate or incomplete in any way or for any reason.

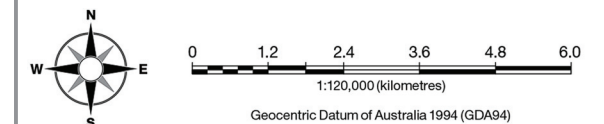
All data depicted on this map has been sourced from either the Mareeba Shire Council or the State of Queensland from the latest datasets available at the time of map compilation.

Map compilation date: August 2015.

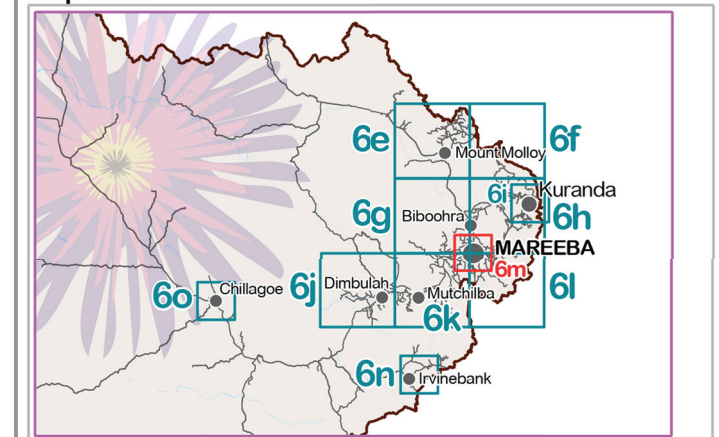
Crown & Council Copyright Reserved.

### Note

Where information on the map is obscured by text or other map elements contact Council for a determination.

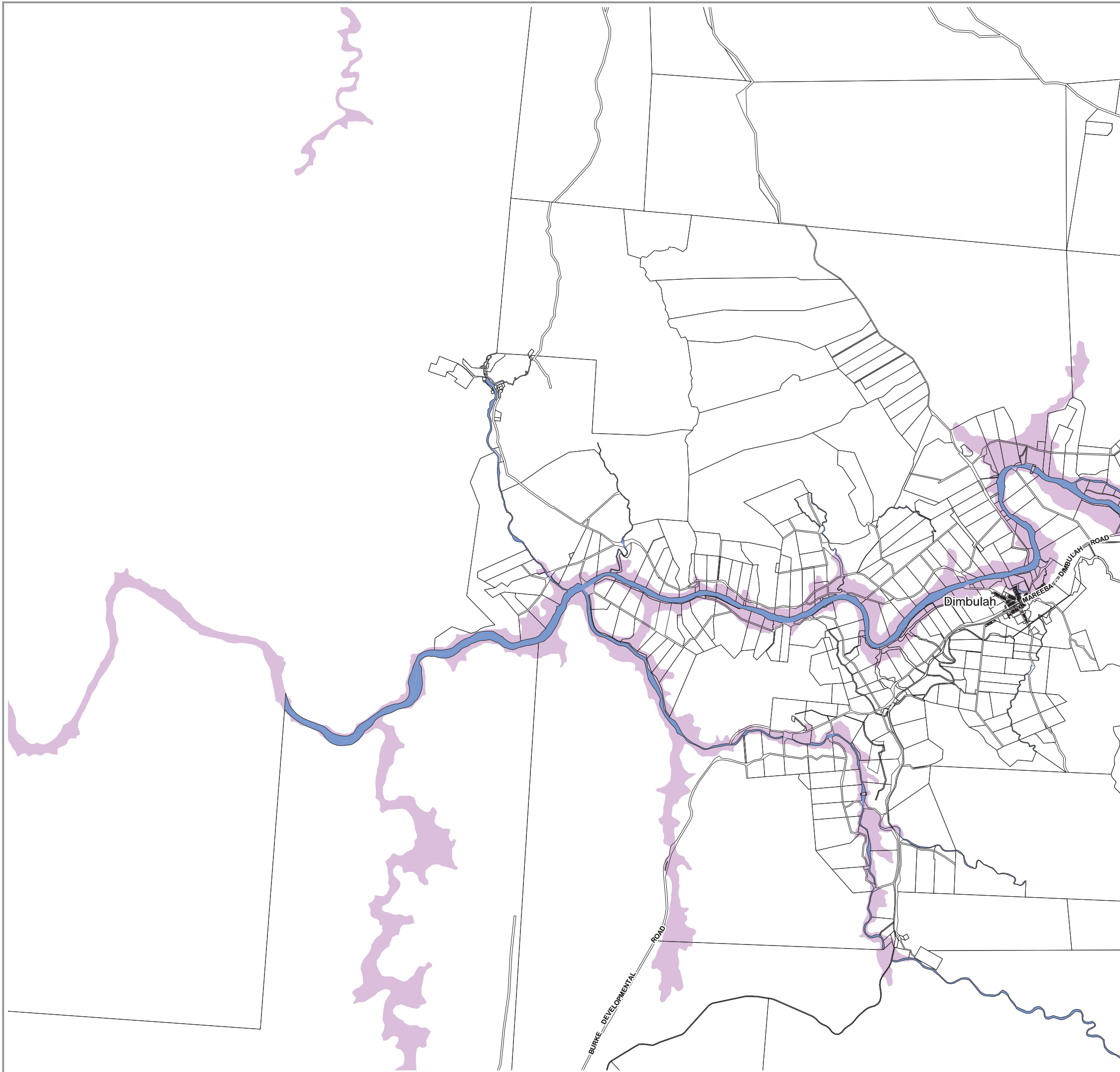


### Map Index



## Overlay Map Flood Hazard- Dimbulah

**OVERLAY MAP - OM006j**



## LEGEND

### Modelled Flood Hazard Levels<sup>(1)</sup>

1% AEP Defined Flood Event (DFE):

- Extreme Flood Hazard
- High Flood Hazard
- Significant Flood Hazard
- Low Flood Hazard
- General Extent of Modelled Flood Hazard Levels

### Queensland Floodplain Assessment Overlay Mapping<sup>(2)</sup>

- Potential Flood Hazard Area

### Other

- Cadastre
- Watercourse

**(1)** The Modelled Flood Hazard Levels are sourced from the Queensland Reconstruction Authority - Flood Hazard Mapping - Mareeba, Kuranda, Bibbohra, Bilwon and Koah, 12 April 2013 which models the predicted flood impact of the Defined Flood Event (DFE).

**(2)** In areas outside the limits of the specific flood modelling undertaken in (1) above Flood Hazard Areas are sourced from the State Wide Queensland Floodplain Overlay mapping. These maps have been derived from various state-wide datasets and the result is a spatial extent of where flooding has previously or has the potential to occur. **These maps are not based on any flood model and do not represent a particular flood event.**

### Information

Whilst every care is taken to ensure the accuracy of this product, neither the Mareeba Shire Council or the State of Queensland make any representations or warranties about its accuracy, reliability, completeness or suitability for any particular purpose and disclaims all responsibility and all liability (including without limitation, liability in negligence) for all expenses, losses, damages (including indirect or consequential damage) and costs that may occur as a result of the product being inaccurate or incomplete in any way or for any reason.

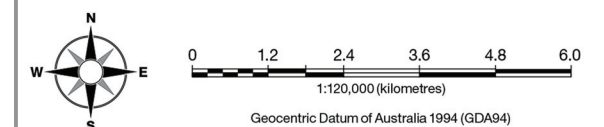
All data depicted on this map has been sourced from either the Mareeba Shire Council or the State of Queensland from the latest datasets available at the time of map compilation.

Map compilation date: August 2015.

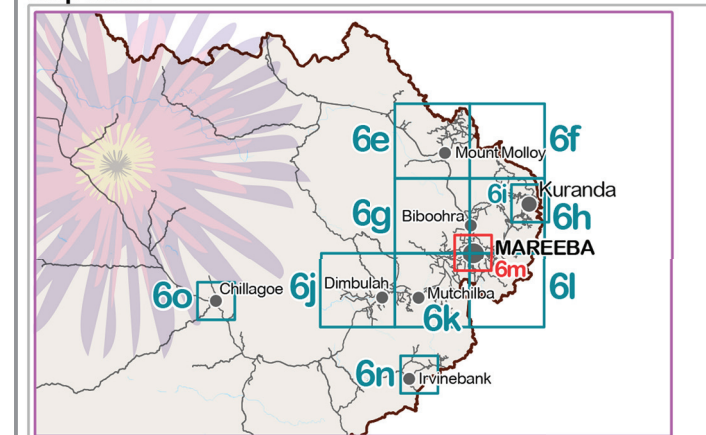
Crown & Council Copyright Reserved.

### Note

Where information on the map is obscured by text or other map elements contact Council for a determination.

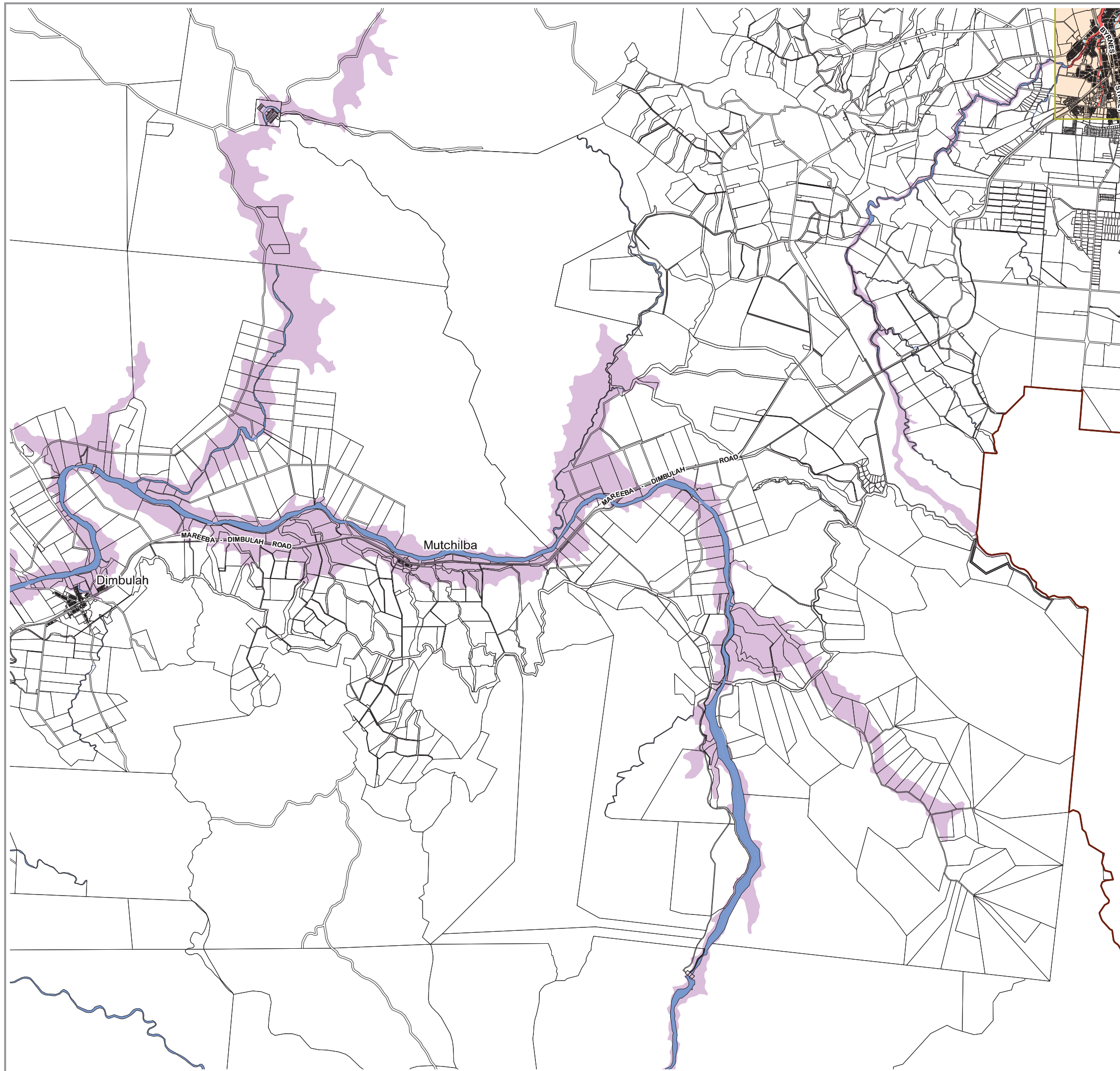


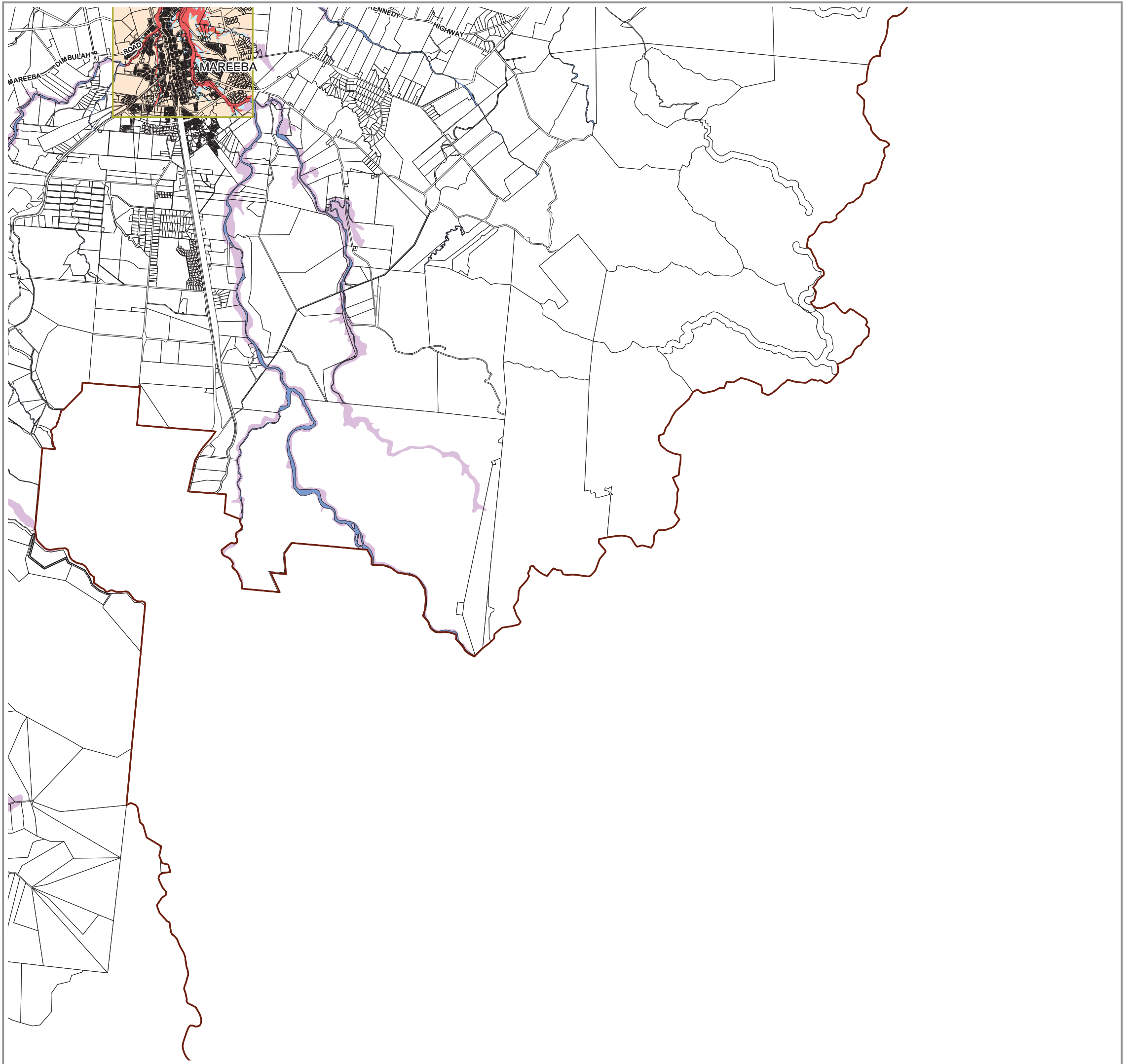
### Map Index



## Overlay Map Flood Hazard- Mutchilba

**OVERLAY MAP - OM006k**





**LEGEND**

**Modelled Flood Hazard Levels<sup>(1)</sup>**

1% AEP Defined Flood Event (DFE):

- Extreme Flood Hazard
- High Flood Hazard
- Significant Flood Hazard
- Low Flood Hazard
- General Extent of Modelled Flood Hazard Levels

**Queensland Floodplain Assessment Overlay Mapping<sup>(2)</sup>**

- Potential Flood Hazard Area

**Other**

- Cadastre
- Watercourse

**(1)** The Modelled Flood Hazard Levels are sourced from the Queensland Reconstruction Authority - Flood Hazard Mapping - Mareeba, Kuranda, Bibbohra, Bilwon and Koah, 12 April 2013 which models the predicted flood impact of the Defined Flood Event (DFE).

**(2)** In areas outside the limits of the specific flood modelling undertaken in (1) above Flood Hazard Areas are sourced from the State Wide Queensland Floodplain Overlay mapping. These maps have been derived from various state-wide datasets and the result is a spatial extent of where flooding has previously or has the potential to occur. **These maps are not based on any flood model and do not represent a particular flood event.**

**Information**

Whilst every care is taken to ensure the accuracy of this product, neither the Mareeba Shire Council or the State of Queensland make any representations or warranties about its accuracy, reliability, completeness or suitability for any particular purpose and disclaims all responsibility and all liability (including without limitation, liability in negligence) for all expenses, losses, damages (including indirect or consequential damage) and costs that may occur as a result of the product being inaccurate or incomplete in any way or for any reason.

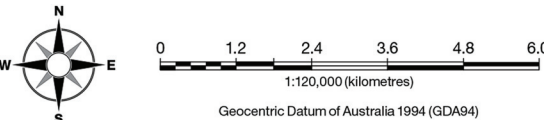
All data depicted on this map has been sourced from either the Mareeba Shire Council or the State of Queensland from the latest datasets available at the time of map compilation.

Map compilation date: August 2015.

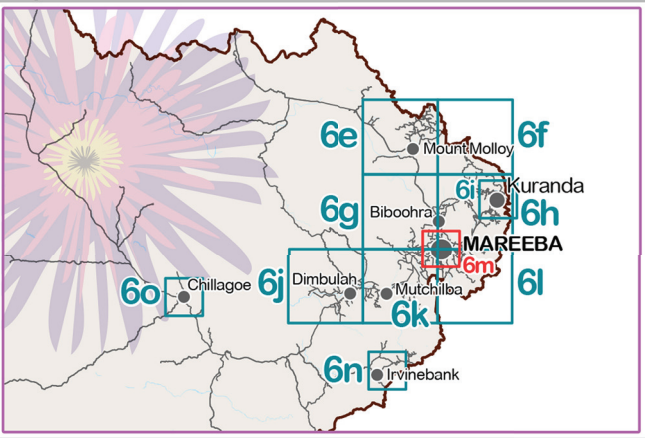
Crown & Council Copyright Reserved.

**Note**

Where information on the map is obscured by text or other map elements contact Council for a determination.



**Map Index**



Overlay Map  
Flood Hazard-  
Mareeba Southeast

**OVERLAY MAP - OM0061**

## LEGEND

### Modelled Flood Hazard Levels<sup>(1)</sup>

1% AEP Defined Flood Event (DFE):

- Extreme Flood Hazard
- High Flood Hazard
- Significant Flood Hazard
- Low Flood Hazard
- General Extent of Modelled Flood Hazard Levels

### Queensland Floodplain Assessment Overlay Mapping<sup>(2)</sup>

- Potential Flood Hazard Area

### Other

- Cadastre
- Watercourse

**(1)** The Modelled Flood Hazard Levels are sourced from the Queensland Reconstruction Authority - Flood Hazard Mapping - Mareeba, Kuranda, Bibbohra, Bilwon and Koah, 12 April 2013 which models the predicted flood impact of the Defined Flood Event (DFE).

**(2)** In areas outside the limits of the specific flood modelling undertaken in (1) above Flood Hazard Areas are sourced from the State Wide Queensland Floodplain Overlay mapping. These maps have been derived from various state-wide datasets and the result is a spatial extent of where flooding has previously or has the potential to occur. **These maps are not based on any flood model and do not represent a particular flood event.**

### Information

Whilst every care is taken to ensure the accuracy of this product, neither the Mareeba Shire Council or the State of Queensland make any representations or warranties about its accuracy, reliability, completeness or suitability for any particular purpose and disclaims all responsibility and all liability (including without limitation, liability in negligence) for all expenses, losses, damages (including indirect or consequential damage) and costs that may occur as a result of the product being inaccurate or incomplete in any way or for any reason.

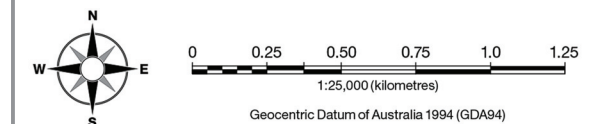
All data depicted on this map has been sourced from either the Mareeba Shire Council or the State of Queensland from the latest datasets available at the time of map compilation.

Map compilation date: August 2015.

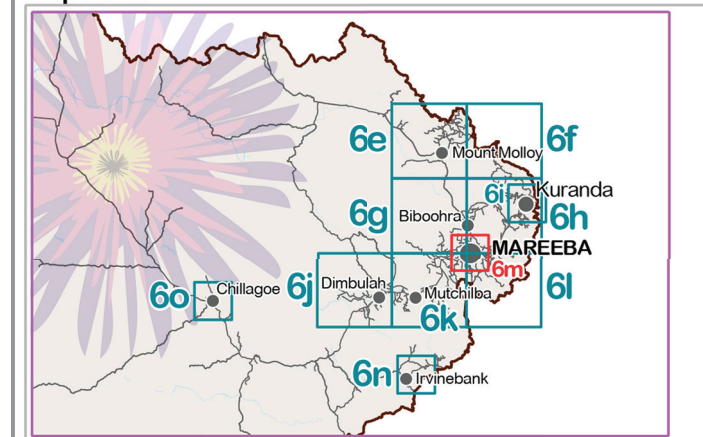
Crown & Council Copyright Reserved.

### Note

Where information on the map is obscured by text or other map elements contact Council for a determination.

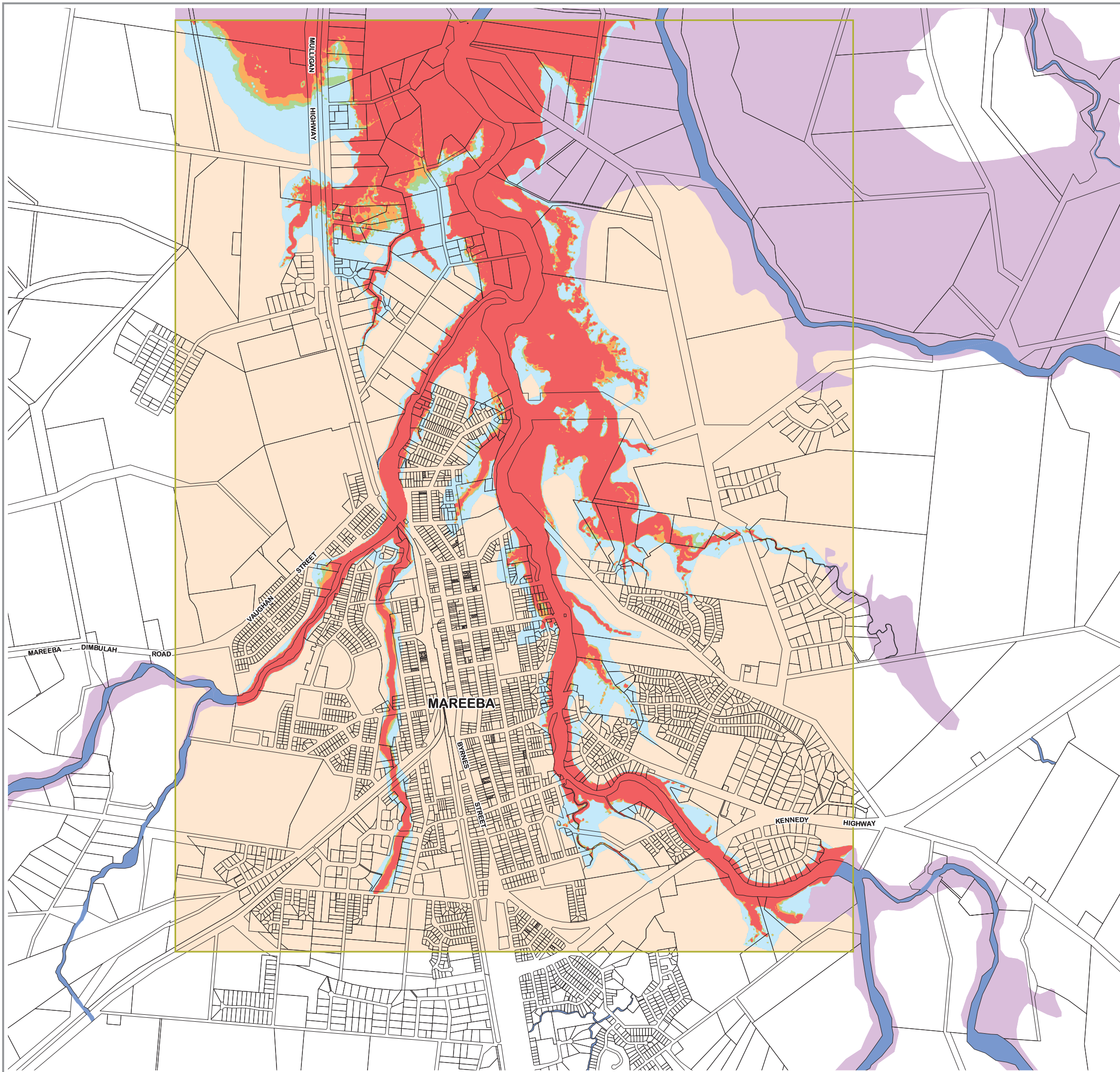


### Map Index



## Overlay Map Flood Hazard- Mareeba

**OVERLAY MAP - OM006m**



## LEGEND

### Modelled Flood Hazard Levels<sup>(1)</sup>

1% AEP Defined Flood Event (DFE):

- Extreme Flood Hazard
- High Flood Hazard
- Significant Flood Hazard
- Low Flood Hazard
- General Extent of Modelled Flood Hazard Levels

### Queensland Floodplain Assessment Overlay Mapping<sup>(2)</sup>

- Potential Flood Hazard Area

### Other

- Cadastre
- Watercourse

**(1)** The Modelled Flood Hazard Levels are sourced from the Queensland Reconstruction Authority - Flood Hazard Mapping - Mareeba, Kuranda, Bibbohra, Bilwon and Koah, 12 April 2013 which models the predicted flood impact of the Defined Flood Event (DFE).

**(2)** In areas outside the limits of the specific flood modelling undertaken in (1) above Flood Hazard Areas are sourced from the State Wide Queensland Floodplain Overlay mapping. These maps have been derived from various state-wide datasets and the result is a spatial extent of where flooding has previously or has the potential to occur. **These maps are not based on any flood model and do not represent a particular flood event.**

### Information

Whilst every care is taken to ensure the accuracy of this product, neither the Mareeba Shire Council or the State of Queensland make any representations or warranties about its accuracy, reliability, completeness or suitability for any particular purpose and disclaims all responsibility and all liability (including without limitation, liability in negligence) for all expenses, losses, damages (including indirect or consequential damage) and costs that may occur as a result of the product being inaccurate or incomplete in any way or for any reason.

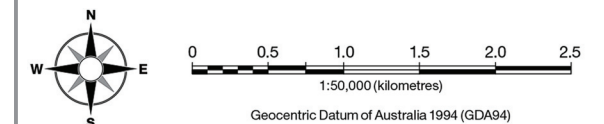
All data depicted on this map has been sourced from either the Mareeba Shire Council or the State of Queensland from the latest datasets available at the time of map compilation.

Map compilation date: August 2015.

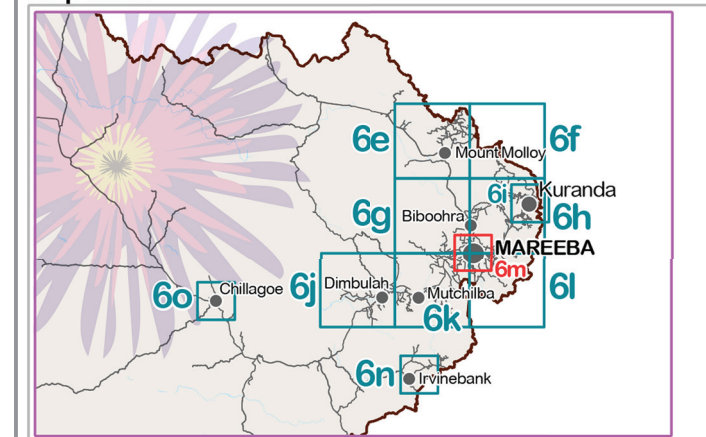
Crown & Council Copyright Reserved.

### Note

Where information on the map is obscured by text or other map elements contact Council for a determination.

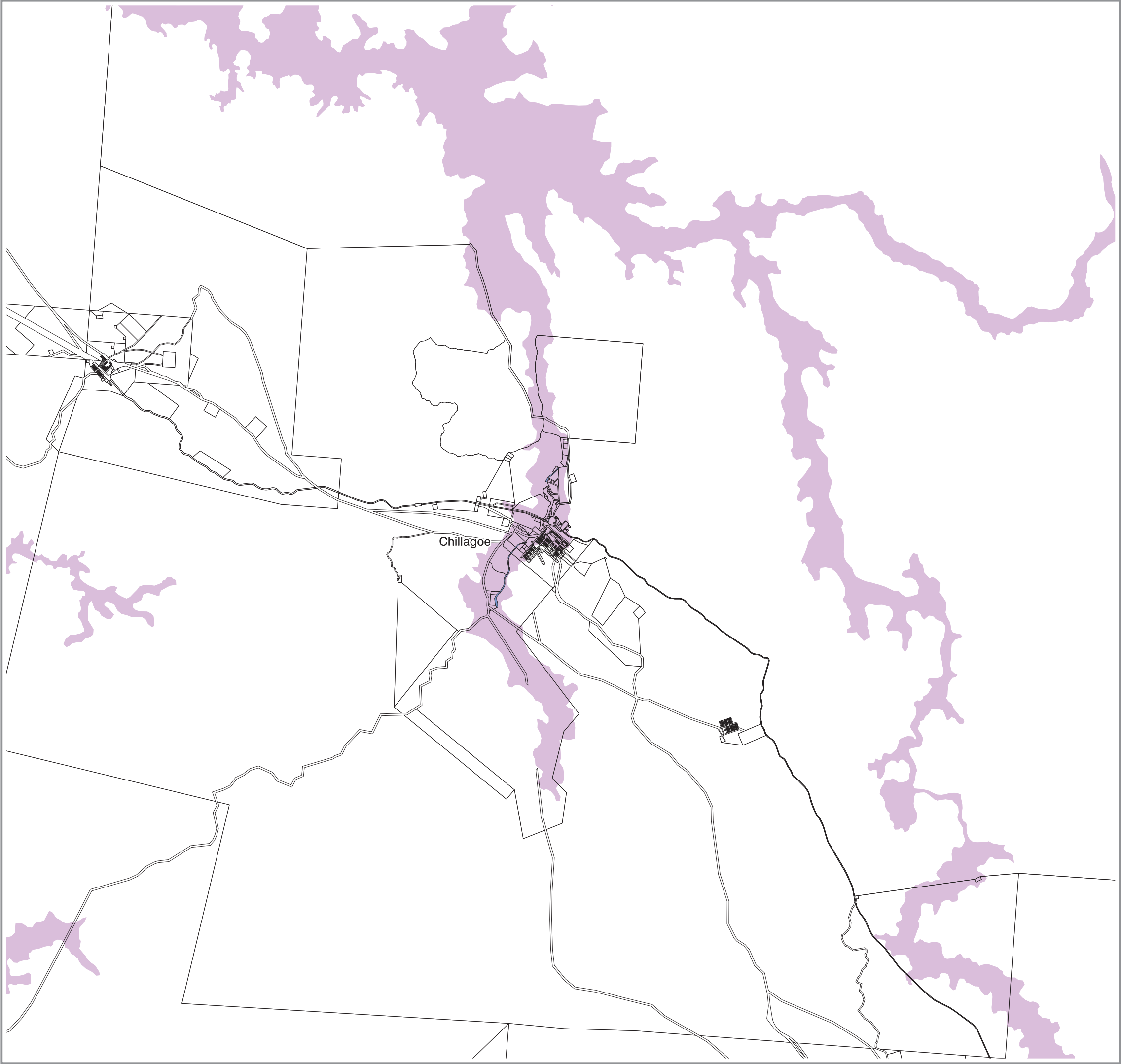


### Map Index



## Overlay Map Flood Hazard- Irvinebank

**OVERLAY MAP - OM006n**



**Mareeba**  
SHIRE COUNCIL

**LEGEND**

**Modelled Flood Hazard Levels<sup>(1)</sup>**

1% AEP Defined Flood Event (DFE):

- Extreme Flood Hazard
- High Flood Hazard
- Significant Flood Hazard
- Low Flood Hazard
- General Extent of Modelled Flood Hazard Levels

**Queensland Floodplain Assessment Overlay Mapping<sup>(2)</sup>**

- Potential Flood Hazard Area

**Other**

- Cadastral
- Watercourse

- (1)** The Modelled Flood Hazard Levels are sourced from the Queensland Reconstruction Authority - Flood Hazard Mapping - Mareeba, Kuranda, Bibbohra, Bilwon and Koah, 12 April 2013 which models the predicted flood impact of the Defined Flood Event (DFE).
- (2)** In areas outside the limits of the specific flood modelling undertaken in (1) above Flood Hazard Areas are sourced from the State Wide Queensland Floodplain Overlay mapping. These maps have been derived from various state-wide datasets and the result is a spatial extent of where flooding has previously or has the potential to occur. **These maps are not based on any flood model and do not represent a particular flood event.**

**Information**

Whilst every care is taken to ensure the accuracy of this product, neither the Mareeba Shire Council or the State of Queensland make any representations or warranties about its accuracy, reliability, completeness or suitability for any particular purpose and disclaims all responsibility and all liability (including without limitation, liability in negligence) for all expenses, losses, damages (including indirect or consequential damage) and costs that may occur as a result of the product being inaccurate or incomplete in any way or for any reason.

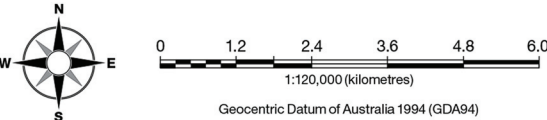
All data depicted on this map has been sourced from either the Mareeba Shire Council or the State of Queensland from the latest datasets available at the time of map compilation.

Map compilation date: August 2015.

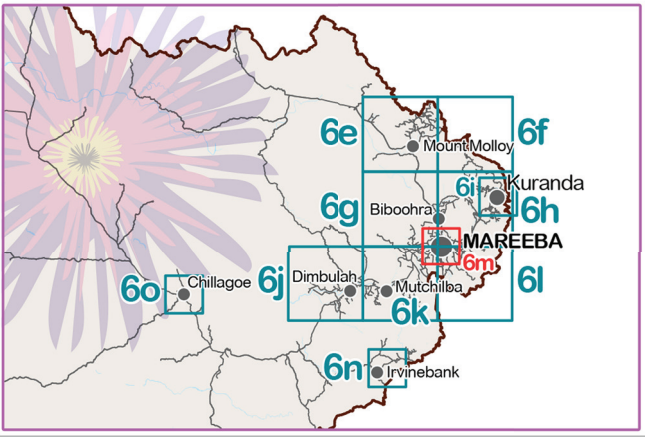
Crown & Council Copyright Reserved.

**Note**

Where information on the map is obscured by text or other map elements contact Council for a determination.



**Map Index**



Overlay Map  
Flood Hazard-  
Chillagoe

**OVERLAY MAP - OM006o**