






## LEGEND

### Extractive and Mineral Resources

-  Generalised location of a Key Resource Area - refer to Overlay Map OM005e for more detail
-  Generalised location of a Local Resource Area - refer to Overlay Map OM005e for more detail
-  Mining Claims (granted claims only)<sup>(1)</sup>
-  Mineral Development Licenses (granted licenses only)<sup>(1)</sup>
-  Mining Leases (granted leases only)<sup>(1)</sup>

<sup>(1)</sup> Mining tenements include mining claims or leases and mineral development licences. The Sustainable Planning Act 2009 does not apply to mining tenements authorised under the Mineral Resources Act 1989, other than for administering IDAS for the Queensland Heritage Act 1992, in relation to a Queensland heritage place under the Heritage Act. Interested persons may obtain details of the mining tenement from -

- for a mining claim or lease - the mining registrar for the land covered by the claim or lease; or
- for a mineral development licence - the chief executive of the department in which the Act is administered

### Other Elements

-  Cadastre
-  Mareeba Shire Council Boundary
-  Watercourse

### Information

Whilst every care is taken to ensure the accuracy of this product, neither the Mareeba Shire Council or the State of Queensland make any representations or warranties about its accuracy, reliability, completeness or suitability for any particular purpose and disclaims all responsibility and all liability (including without limitation, liability in negligence) for all expenses, losses, damages (including indirect or consequential damage) and costs that may occur as a result of the product being inaccurate or incomplete in any way or for any reason.

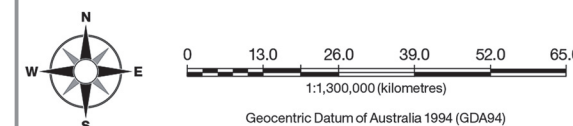
All data depicted on this map has been sourced from either the Mareeba Shire Council or the State of Queensland from the latest datasets available at the time of map compilation.

Map compilation date: August 2015.

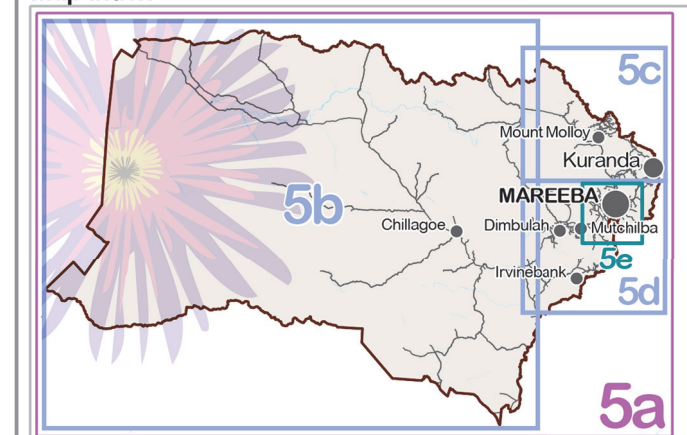
Crown & Council Copyright Reserved.

### Note

Where information on the map is obscured by text or other map elements contact Council for a determination.

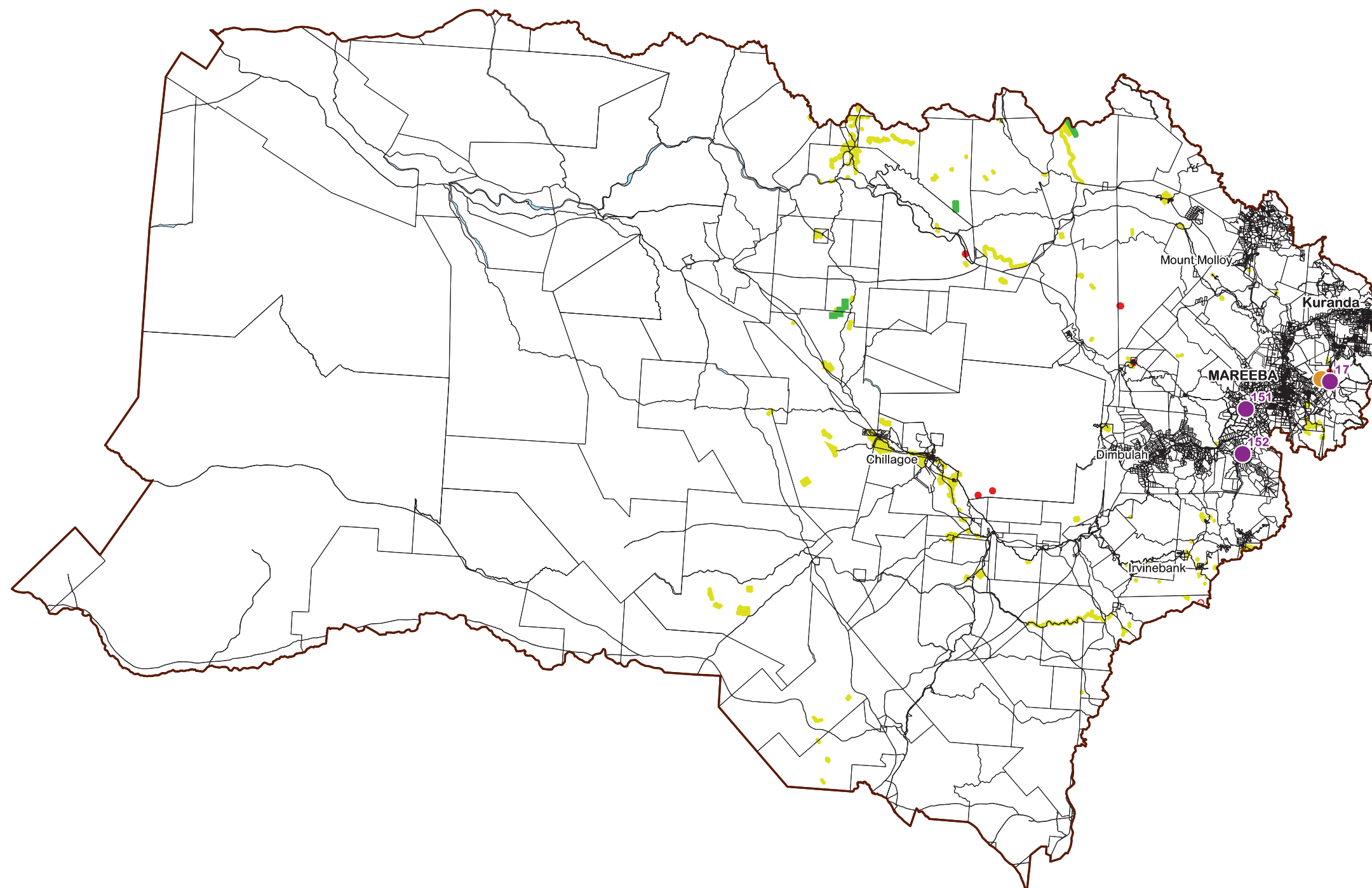


### Map Index








# Overlay Map Extractive Resources- Regionwide

OVERLAY MAP - OM005a



## LEGEND

### Extractive and Mineral Resources

-  Generalised location of a Key Resource Area - refer to Overlay Map OM005e for more detail
-  Generalised location of a Local Resource Area - refer to Overlay Map OM005e for more detail
-  Mining Claims (granted claims only)<sup>(1)</sup>
-  Mineral Development Licenses (granted licenses only)<sup>(1)</sup>
-  Mining Leases (granted leases only)<sup>(1)</sup>

<sup>(1)</sup> Mining tenements include mining claims or leases and mineral development licences. The Sustainable Planning Act 2009 does not apply to mining tenements authorised under the Mineral Resources Act 1989, other than for administering IDAS for the Queensland Heritage Act 1992, in relation to a Queensland heritage place under the Heritage Act. Interested persons may obtain details of the mining tenement from -

- for a mining claim or lease - the mining registrar for the land covered by the claim or lease; or
- for a mineral development licence - the chief executive of the department in which the Act is administered

### Other Elements

-  Cadastre
-  Mareeba Shire Council Boundary
-  Watercourse

### Information

Whilst every care is taken to ensure the accuracy of this product, neither the Mareeba Shire Council or the State of Queensland make any representations or warranties about its accuracy, reliability, completeness or suitability for any particular purpose and disclaims all responsibility and all liability (including without limitation, liability in negligence) for all expenses, losses, damages (including indirect or consequential damage) and costs that may occur as a result of the product being inaccurate or incomplete in any way or for any reason.

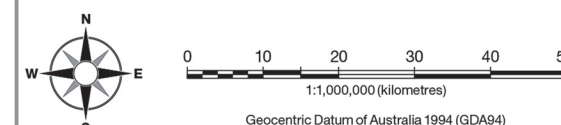
All data depicted on this map has been sourced from either the Mareeba Shire Council or the State of Queensland from the latest datasets available at the time of map compilation.

Map compilation date: August 2015.

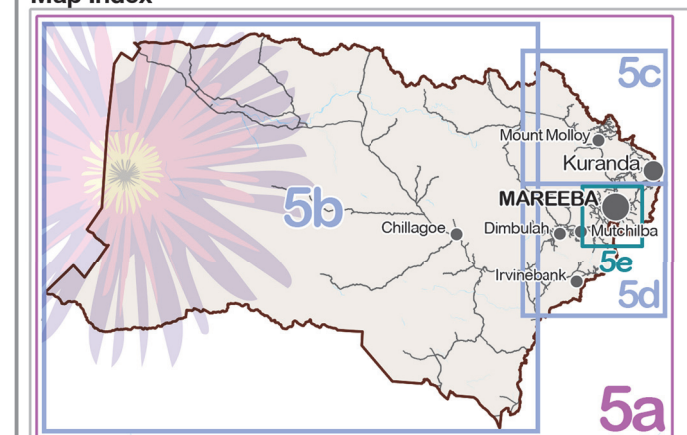
Crown & Council Copyright Reserved.

### Note

Where information on the map is obscured by text or other map elements contact Council for a determination.

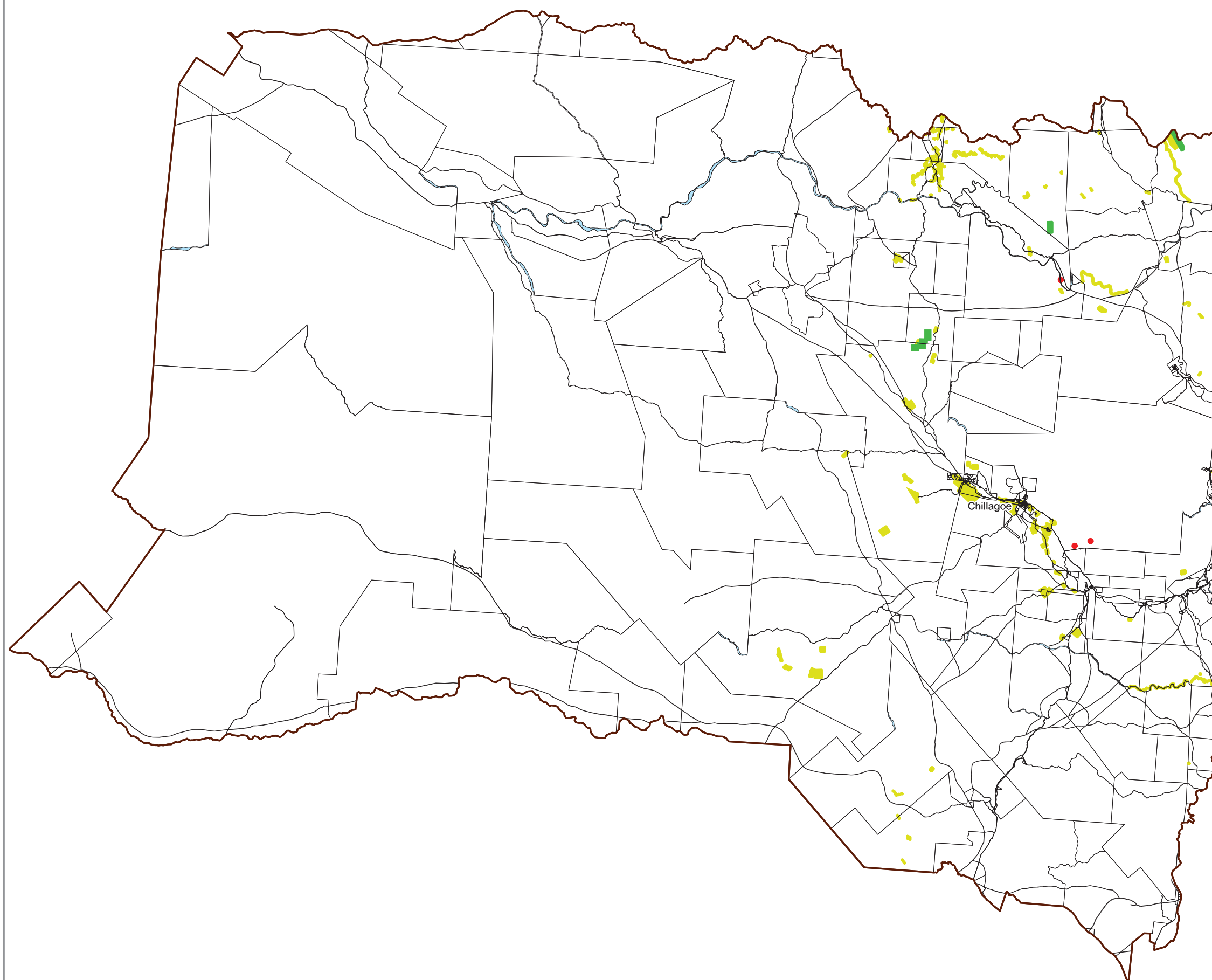


### Map Index



# Overlay Map Extractive Resources- Central and Western Region






OVERLAY MAP - OM005b





## LEGEND

### Extractive and Mineral Resources

-  Generalised location of a Key Resource Area - refer to Overlay Map OM005e for more detail
-  Generalised location of a Local Resource Area - refer to Overlay Map OM005e for more detail
-  Mining Claims (granted claims only)<sup>(1)</sup>
-  Mineral Development Licenses (granted licenses only)<sup>(1)</sup>
-  Mining Leases (granted leases only)<sup>(1)</sup>

<sup>(1)</sup> Mining tenements include mining claims or leases and mineral development licences. The Sustainable Planning Act 2009 does not apply to mining tenements authorised under the Mineral Resources Act 1989, other than for administering IDAS for the Queensland Heritage Act 1992, in relation to a Queensland heritage place under the Heritage Act. Interested persons may obtain details of the mining tenement from -

- for a mining claim or lease - the mining registrar for the land covered by the claim or lease; or
- for a mineral development licence - the chief executive of the department in which the Act is administered

### Other Elements

-  Cadastre
-  Mareeba Shire Council Boundary
-  Watercourse

### Information

Whilst every care is taken to ensure the accuracy of this product, neither the Mareeba Shire Council or the State of Queensland make any representations or warranties about its accuracy, reliability, completeness or suitability for any particular purpose and disclaims all responsibility and all liability (including without limitation, liability in negligence) for all expenses, losses, damages (including indirect or consequential damage) and costs that may occur as a result of the product being inaccurate or incomplete in any way or for any reason.

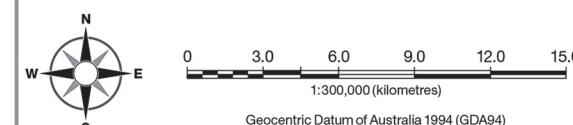
All data depicted on this map has been sourced from either the Mareeba Shire Council or the State of Queensland from the latest datasets available at the time of map compilation.

Map compilation date: August 2015.

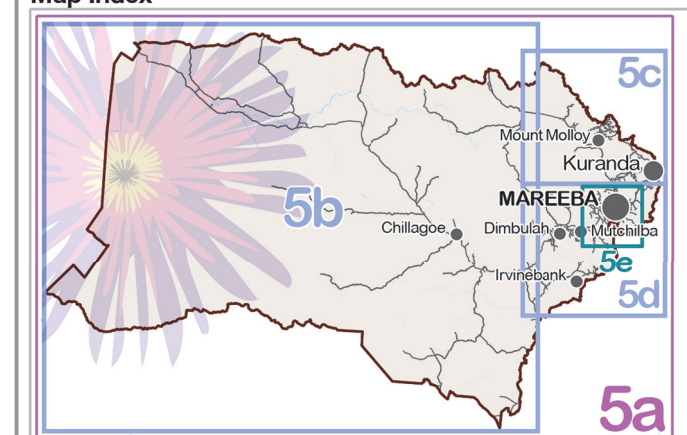
Crown & Council Copyright Reserved.

### Note

Where information on the map is obscured by text or other map elements contact Council for a determination.

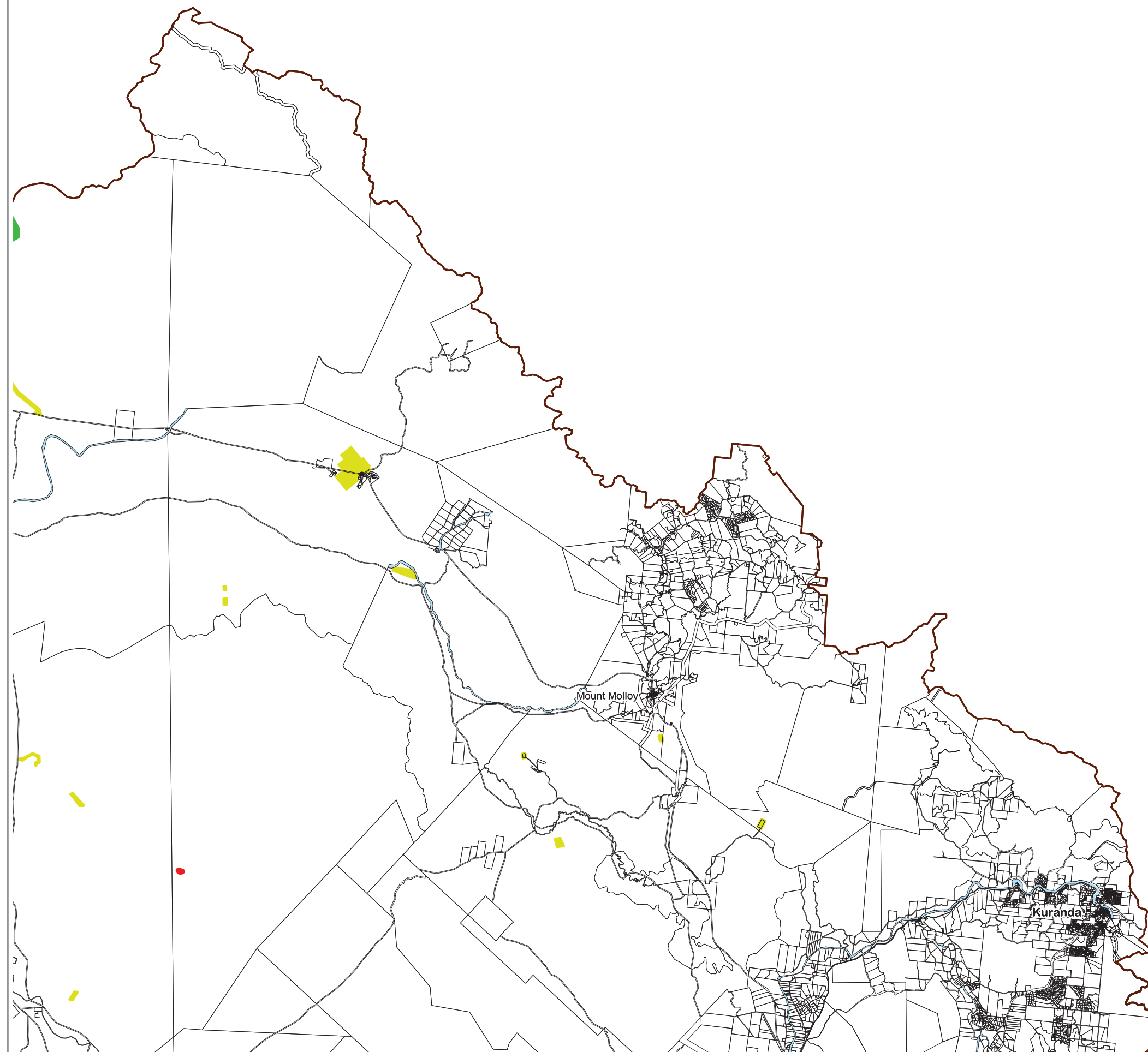


### Map Index








# Overlay Map Extractive Resources- Northeastern Region

OVERLAY MAP - OM005c



## LEGEND

### Extractive and Mineral Resources

-  Generalised location of a Key Resource Area - refer to Overlay Map OM005e for more detail
-  Generalised location of a Local Resource Area - refer to Overlay Map OM005e for more detail
-  Mining Claims (granted claims only)<sup>(1)</sup>
-  Mineral Development Licenses (granted licenses only)<sup>(1)</sup>
-  Mining Leases (granted leases only)<sup>(1)</sup>

<sup>(1)</sup> Mining tenements include mining claims or leases and mineral development licences. The Sustainable Planning Act 2009 does not apply to mining tenements authorised under the Mineral Resources Act 1989, other than for administering IDAS for the Queensland Heritage Act 1992, in relation to a Queensland heritage place under the Heritage Act. Interested persons may obtain details of the mining tenement from -

- for a mining claim or lease - the mining registrar for the land covered by the claim or lease; or
- for a mineral development licence - the chief executive of the department in which the Act is administered

### Other Elements

-  Cadastre
-  Mareeba Shire Council Boundary
-  Watercourse

### Information

Whilst every care is taken to ensure the accuracy of this product, neither the Mareeba Shire Council or the State of Queensland make any representations or warranties about its accuracy, reliability, completeness or suitability for any particular purpose and disclaims all responsibility and all liability (including without limitation, liability in negligence) for all expenses, losses, damages (including indirect or consequential damage) and costs that may occur as a result of the product being inaccurate or incomplete in any way or for any reason.

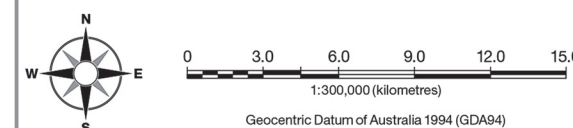
All data depicted on this map has been sourced from either the Mareeba Shire Council or the State of Queensland from the latest datasets available at the time of map compilation.

Map compilation date: August 2015.

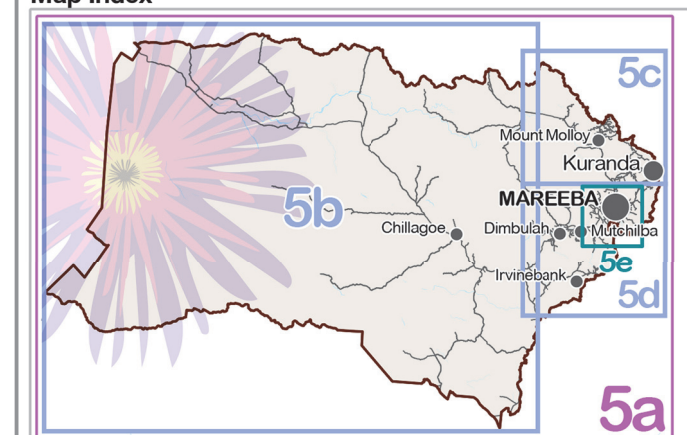
Crown & Council Copyright Reserved.

### Note

Where information on the map is obscured by text or other map elements contact Council for a determination.

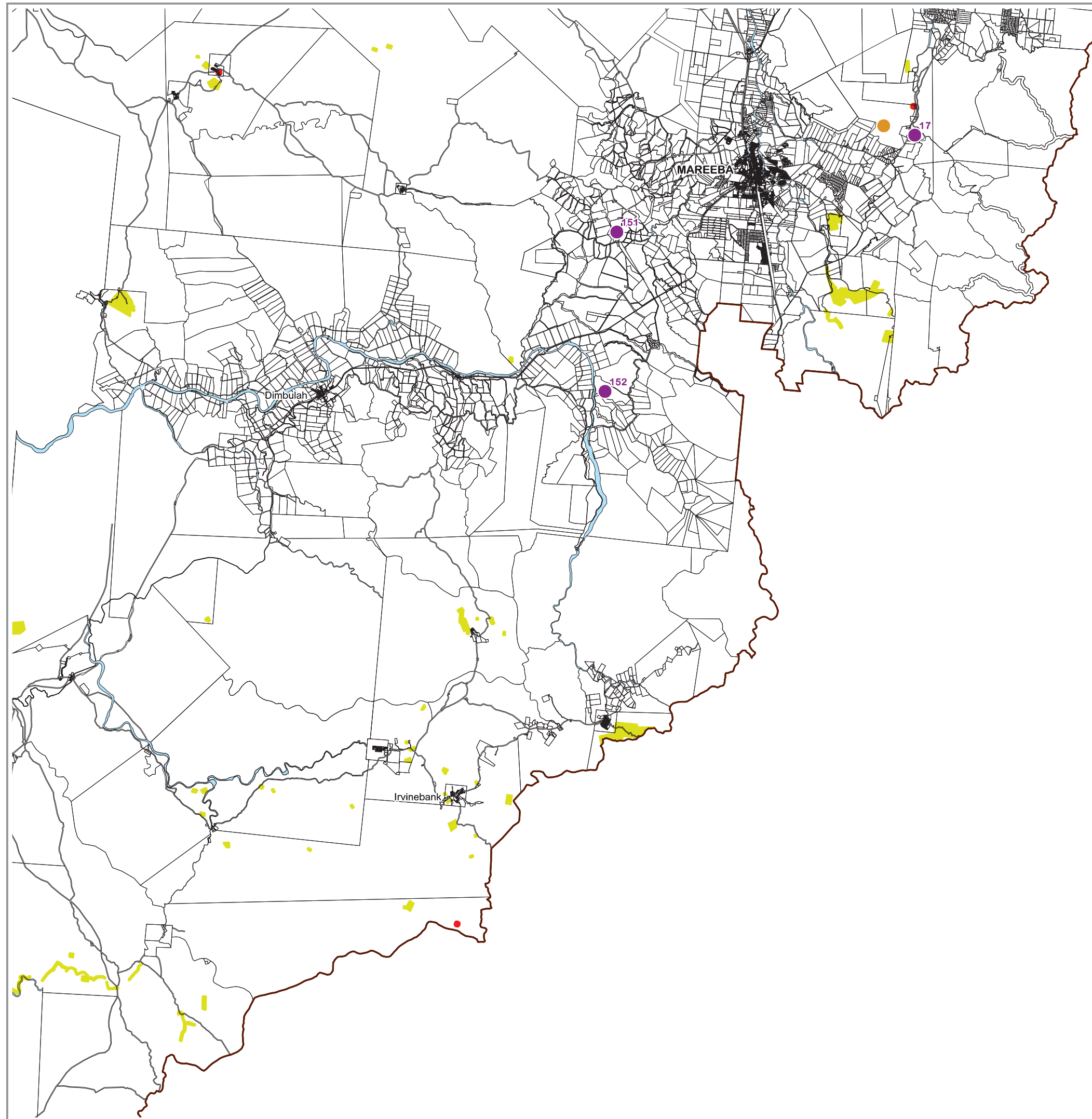


### Map Index

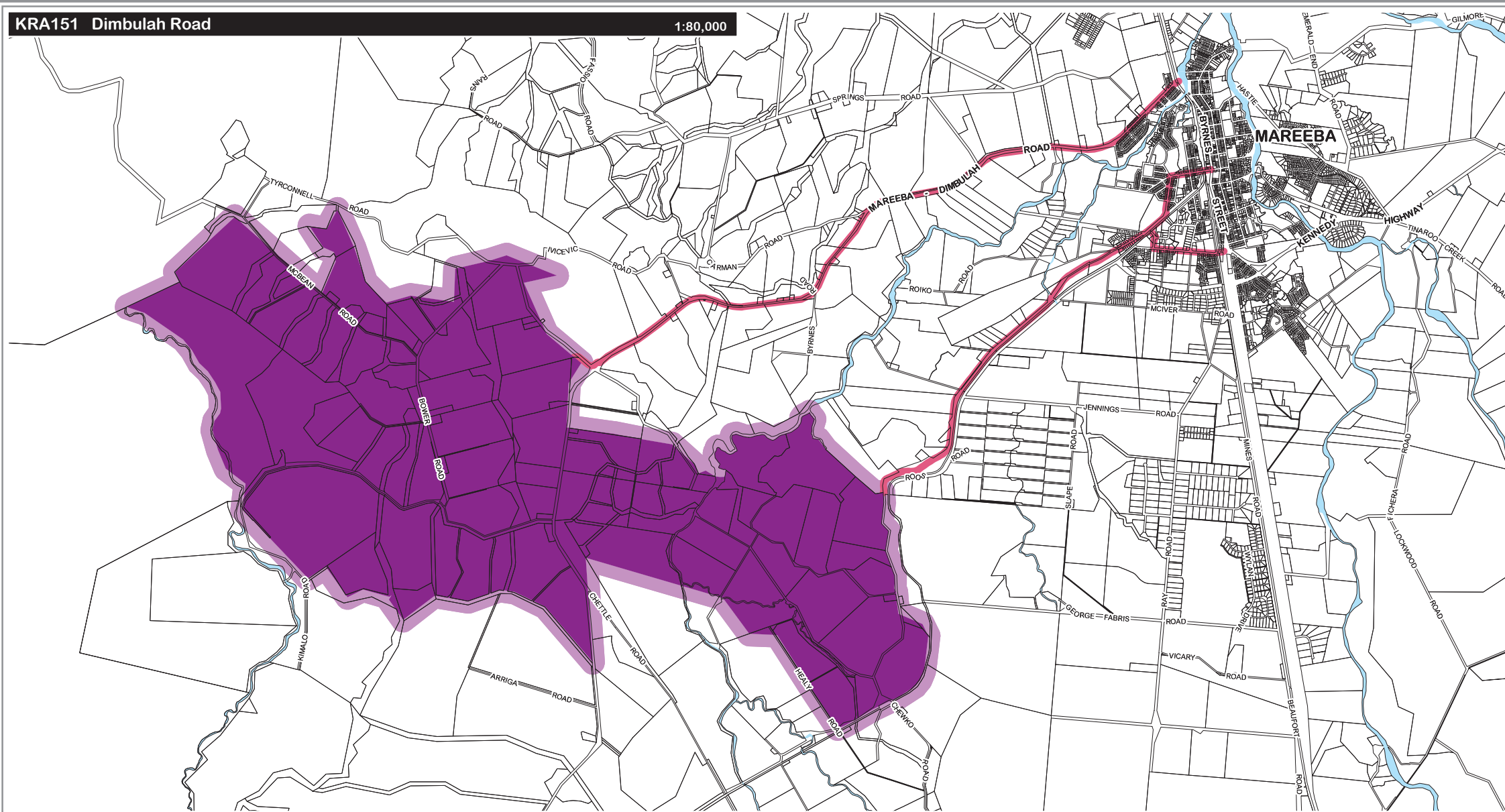


# Overlay Map Extractive Resources- Southeastern Region

OVERLAY MAP - OM005d





**LEGEND****Extractive and Mineral Resources**

- Key Resource Processing Area
- Key Resource Separation Area
- Key Resource Transport Route
- Local Resource Area
- Local Resource Separation Area
- Mining Claims (granted claims only)<sup>(1)</sup>
- Mineral Development Licenses (granted licenses only)<sup>(1)</sup>
- Mining Leases (granted leases only)<sup>(1)</sup>

<sup>(1)</sup> Mining tenements include mining claims or leases and mineral development licences.

The Sustainable Planning Act 2009 does not apply to mining tenements authorised under the Mineral Resources Act 1989, other than for administering IDAS for the Queensland Heritage Act 1992, in relation to a Queensland heritage place under the Heritage Act. Interested persons may obtain details of the mining tenement from -

- for a mining claim or lease - the mining registrar for the land covered by the claim or lease; or
- for a mineral development licence - the chief executive of the department in which the Act is administered

**Other Elements**

- Cadastre
- Mareeba Shire Council Boundary
- Watercourse

**Information**

Whilst every care is taken to ensure the accuracy of this product, neither the Mareeba Shire Council or the State of Queensland make any representations or warranties about its accuracy, reliability, completeness or suitability for any particular purpose and disclaims all responsibility and all liability (including without limitation, liability in negligence) for all expenses, losses, damages (including indirect or consequential damage) and costs that may occur as a result of the product being inaccurate or incomplete in any way or for any reason.

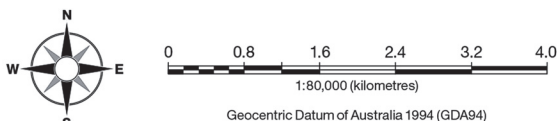
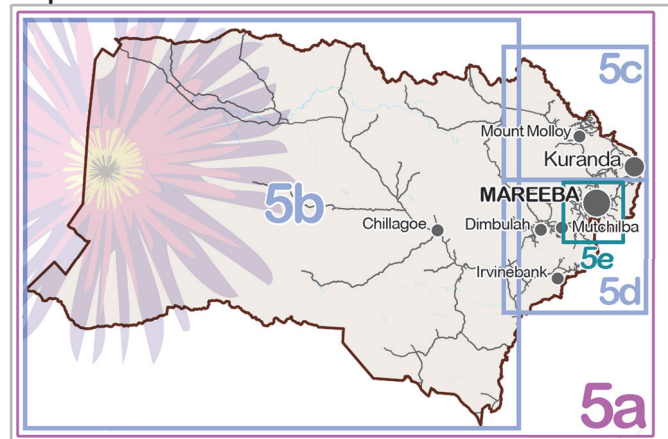
All data depicted on this map has been sourced from either the Mareeba Shire Council or the State of Queensland from the latest datasets available at the time of map compilation.

Map compilation date: August 2015.

Crown & Council Copyright Reserved.

**Note**

Where information on the map is obscured by text or other map elements contact Council for a determination.

**Map Index**

# Overlay Map Extractive Resources- Enlargements

OVERLAY MAP - OM005e

