









LEGEND

Bushfire Hazard

-  Very High Potential Bushfire Intensity
 High Potential Bushfire Intensity
 Medium Potential Bushfire Intensity
 Potential Impact Buffer (100 metres)

Other Elements

- Cadastre
 Mareeba Shire Council Boundary
 Watercourse

Information

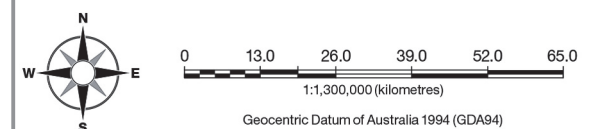
Whilst every care is taken to ensure the accuracy of this product, neither the Mareeba Shire Council or the State of Queensland make any representations or warranties about its accuracy, reliability, completeness or suitability for any particular purpose and disclaims all responsibility and all liability (including without limitation, liability in negligence) for all expenses, losses, damages (including indirect or consequential damage) and costs that may occur as a result of the product being inaccurate or incomplete in any way or for any reason.

All data depicted on this map has been sourced from either the Mareeba Shire Council or the State of Queensland from the latest datasets available at the time of map compilation.

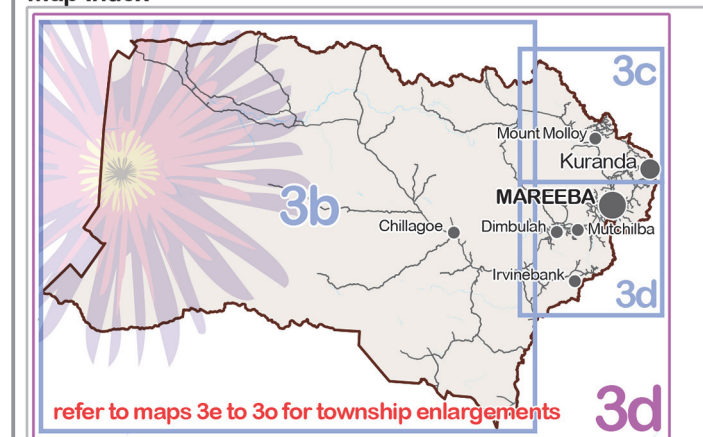
Map compilation date: August 2015.
Crown & Council Copyright Reserved

Note

Where information on the map is obscured by text or other map elements contact Council for a determination.

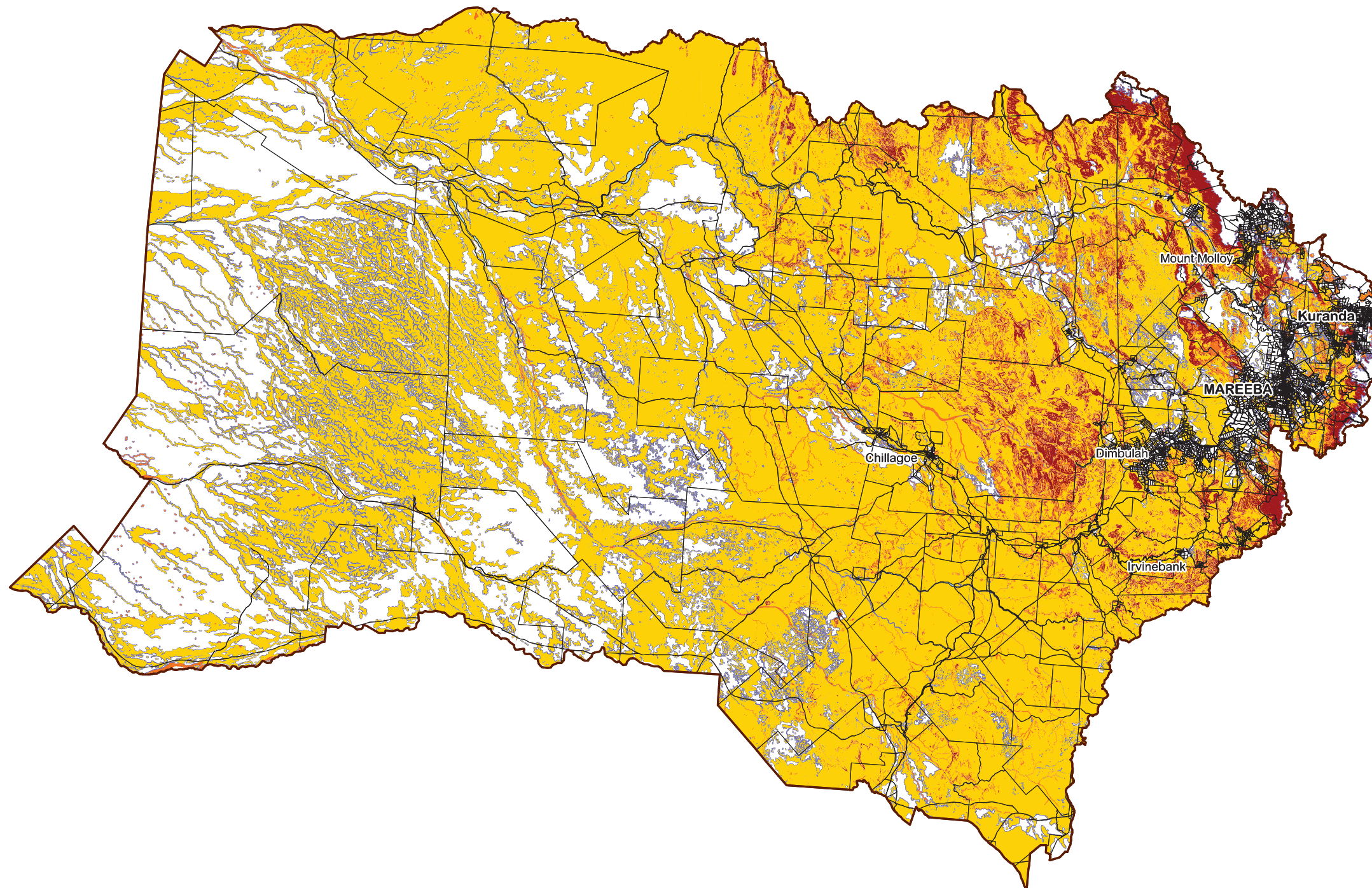


Map Index



Overlay Map Bushfire Hazard- Regionwide

OVERLAY MAP - OM003a



LEGEND

Bushfire Hazard

- Very High Potential Bushfire Intensity
- High Potential Bushfire Intensity
- Medium Potential Bushfire Intensity
- Potential Impact Buffer (100 metres)

Other Elements

- Cadastre
- Mareeba Shire Coucil Boundary
- Watercourse

Information

Whilst every care is taken to ensure the accuracy of this product, neither the Mareeba Shire Council or the State of Queensland make any representations or warranties about its accuracy, reliability, completeness or suitability for any particular purpose and disclaims all responsibility and all liability (including without limitation, liability in negligence) for all expenses, losses, damages (including indirect or consequential damage) and costs that may occur as a result of the product being inaccurate or incomplete in any way or for any reason.

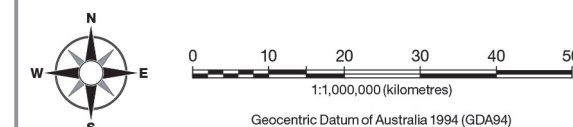
All data depicted on this map has been sourced from either the Mareeba Shire Council or the State of Queensland from the latest datasets available at the time of map compilation.

Map compilation date: August 2015.

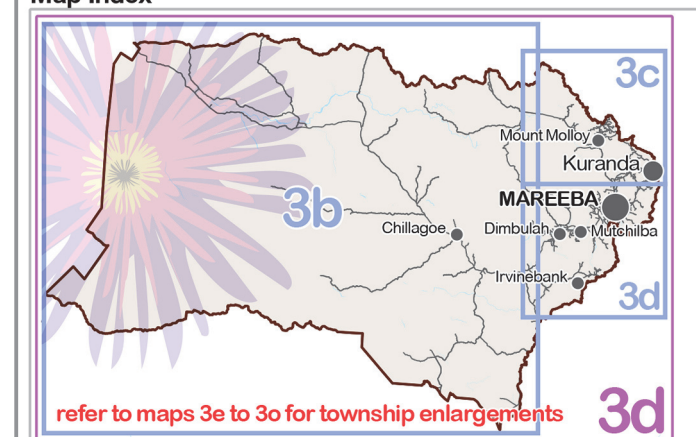
Crown & Council Copyright Reserved.

Note

Where information on the map is obscured by text or other map elements contact Council for a determination.

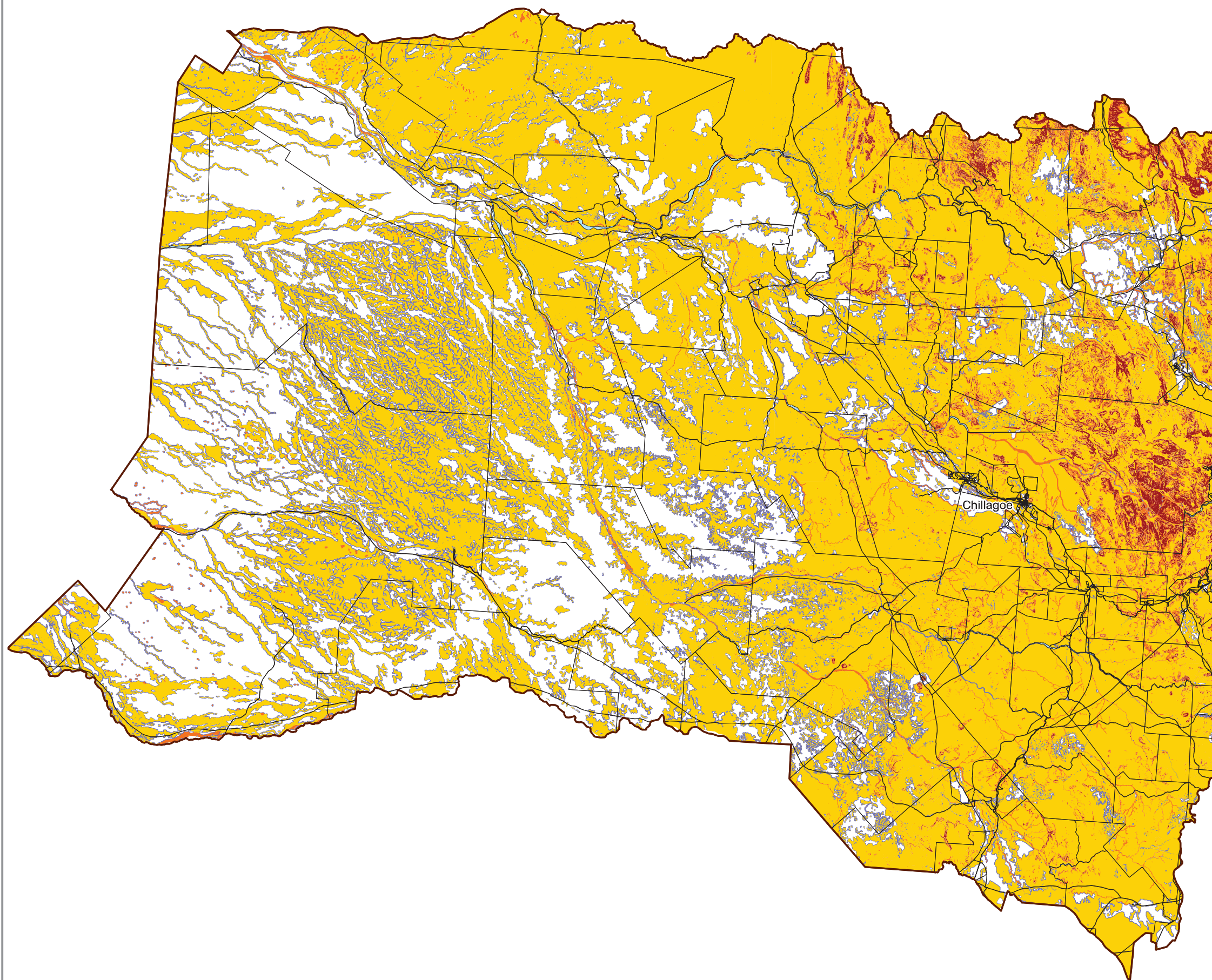


Map Index



Overlay Map Bushfire Hazard- Central and Western Region

OVERLAY MAP - OM003b



LEGEND

Bushfire Hazard

- Very High Potential Bushfire Intensity
- High Potential Bushfire Intensity
- Medium Potential Bushfire Intensity
- Potential Impact Buffer (100 metres)

Other Elements

- Cadastre
- Mareeba Shire Council Boundary
- Watercourse

Information

Whilst every care is taken to ensure the accuracy of this product, neither the Mareeba Shire Council or the State of Queensland make any representations or warranties about its accuracy, reliability, completeness or suitability for any particular purpose and disclaims all responsibility and all liability (including without limitation, liability in negligence) for all expenses, losses, damages (including indirect or consequential damage) and costs that may occur as a result of the product being inaccurate or incomplete in any way or for any reason.

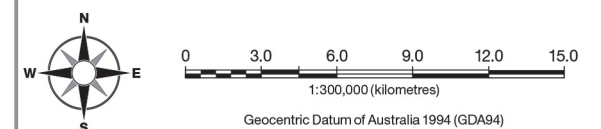
All data depicted on this map has been sourced from either the Mareeba Shire Council or the State of Queensland from the latest datasets available at the time of map compilation.

Map compilation date: August 2015.

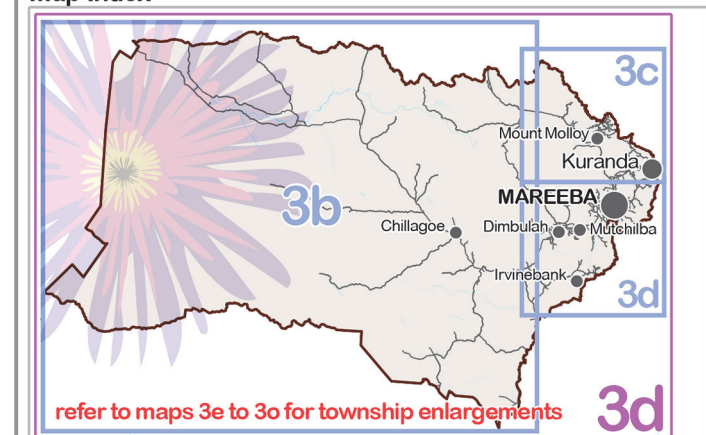
Crown & Council Copyright Reserved.

Note

Where information on the map is obscured by text or other map elements contact Council for a determination.

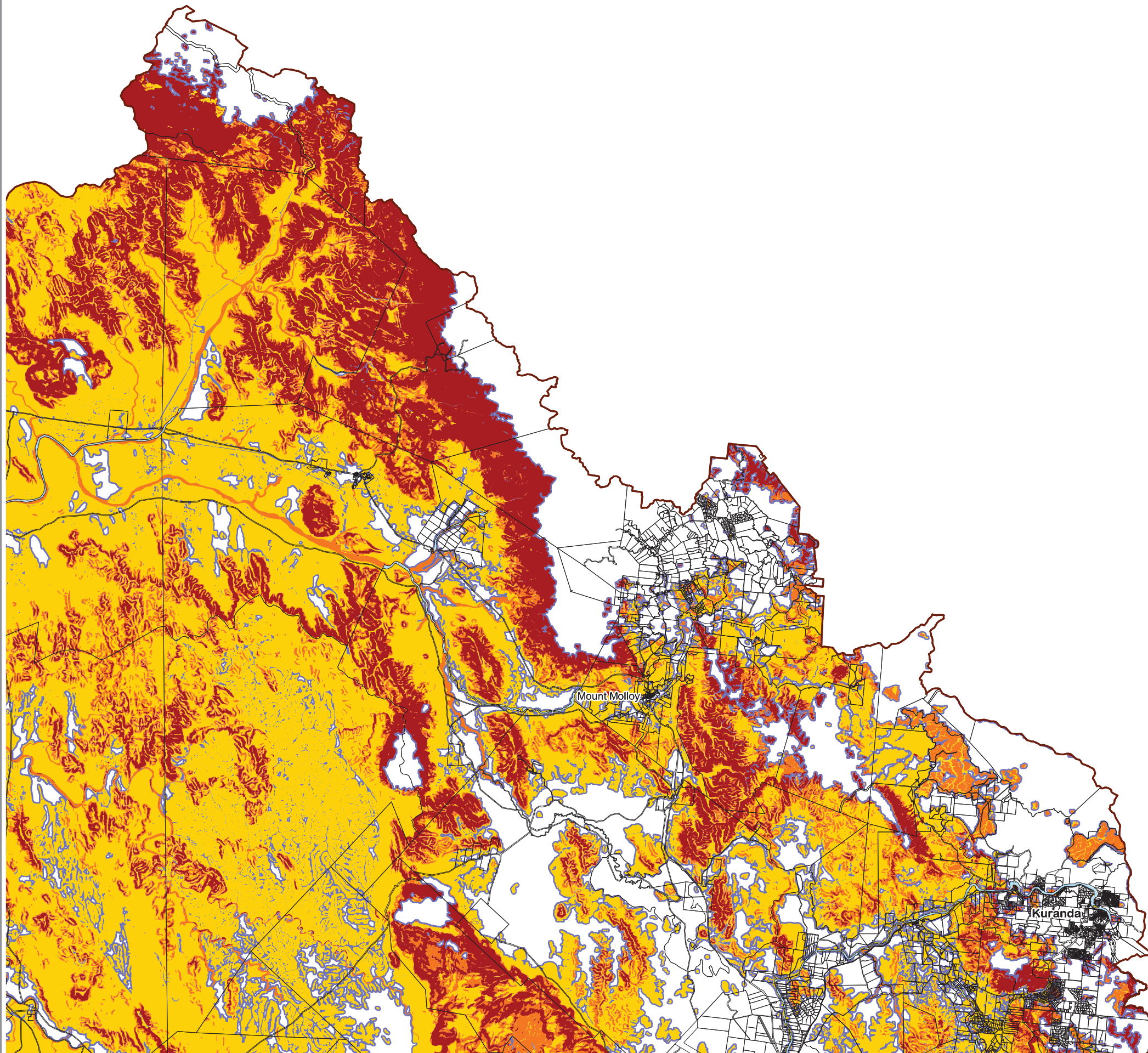


Map Index



Overlay Map Bushfire Hazard- Northeastern Region

OVERLAY MAP - OM003c



LEGEND

Bushfire Hazard

- Very High Potential Bushfire Intensity
- High Potential Bushfire Intensity
- Medium Potential Bushfire Intensity
- Potential Impact Buffer (100 metres)

Other Elements

- Cadastre
- Mareeba Shire Council Boundary
- Watercourse

Information

Whilst every care is taken to ensure the accuracy of this product, neither the Mareeba Shire Council or the State of Queensland make any representations or warranties about its accuracy, reliability, completeness or suitability for any particular purpose and disclaims all responsibility and all liability (including without limitation, liability in negligence) for all expenses, losses, damages (including indirect or consequential damage) and costs that may occur as a result of the product being inaccurate or incomplete in any way or for any reason.

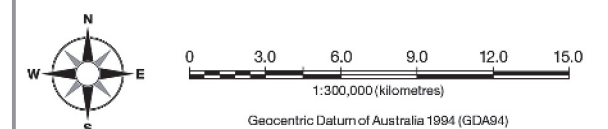
All data depicted on this map has been sourced from either the Mareeba Shire Council or the State of Queensland from the latest datasets available at the time of map compilation.

Map compilation date: August 2015.

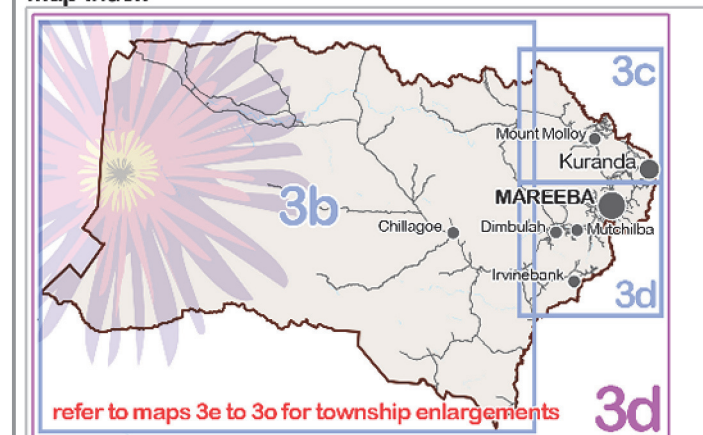
Crown & Council Copyright Reserved.

Note

Where information on the map is obscured by text or other map elements contact Council for a determination.

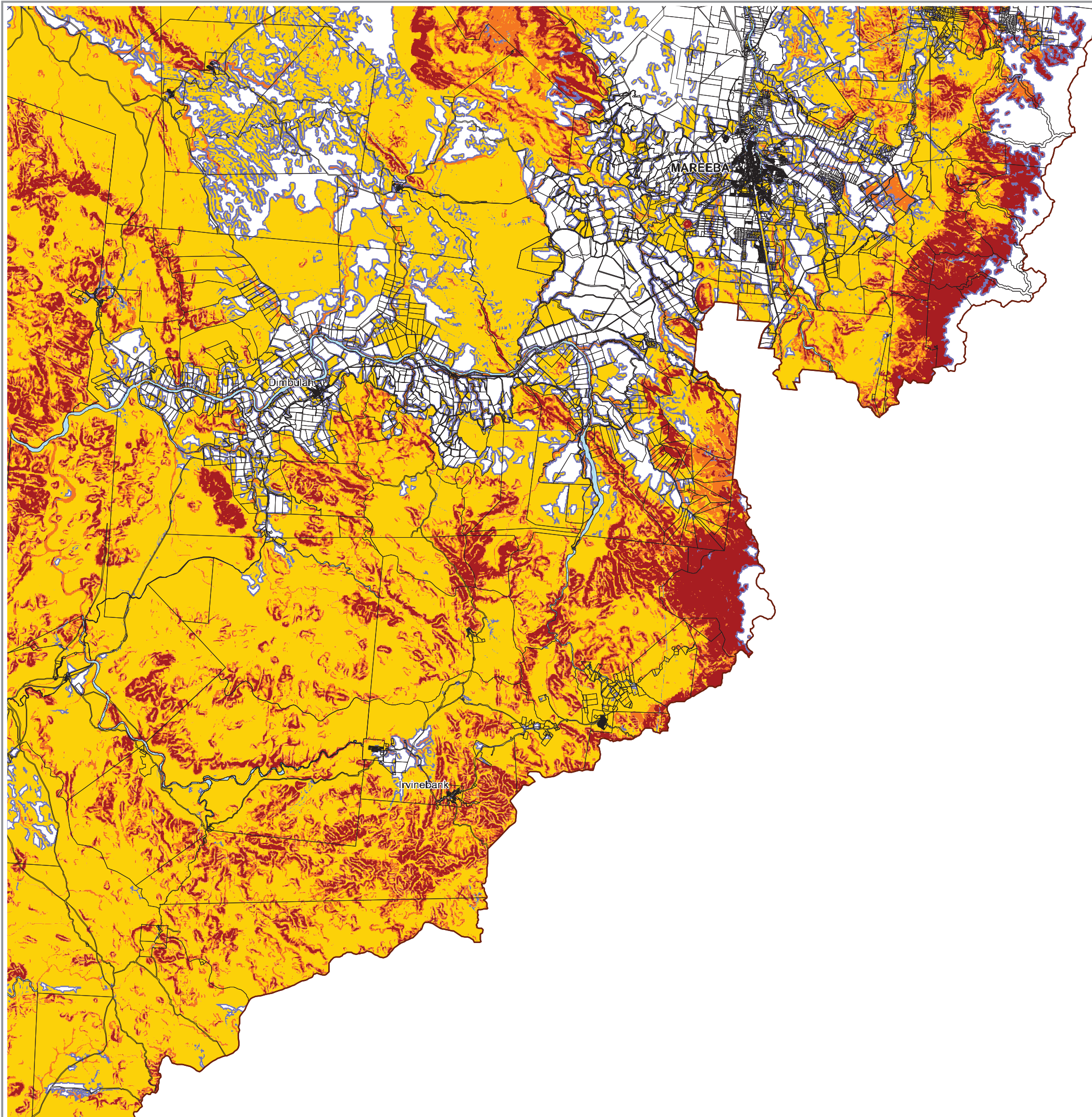


Map Index



Overlay Map Bushfire Hazard- Southeastern Region

OVERLAY MAP - OM003d



LEGEND

Bushfire Hazard

- Very High Potential Bushfire Intensity
- High Potential Bushfire Intensity
- Medium Potential Bushfire Intensity
- Potential Impact Buffer (100 metres)

Other Elements

- Cadastre
- Mareeba Shire Coucil Boundary
- Watercourse

Information

Whilst every care is taken to ensure the accuracy of this product, neither the Mareeba Shire Council or the State of Queensland make any representations or warranties about its accuracy, reliability, completeness or suitability for any particular purpose and disclaims all responsibility and all liability (including without limitation, liability in negligence) for all expenses, losses, damages (including indirect or consequential damage) and costs that may occur as a result of the product being inaccurate or incomplete in any way or for any reason.

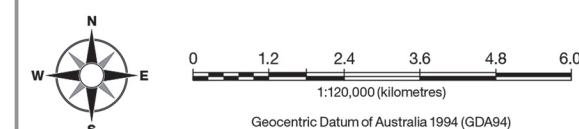
All data depicted on this map has been sourced from either the Mareeba Shire Council or the State of Queensland from the latest datasets available at the time of map compilation.

Map compilation date: August 2015.

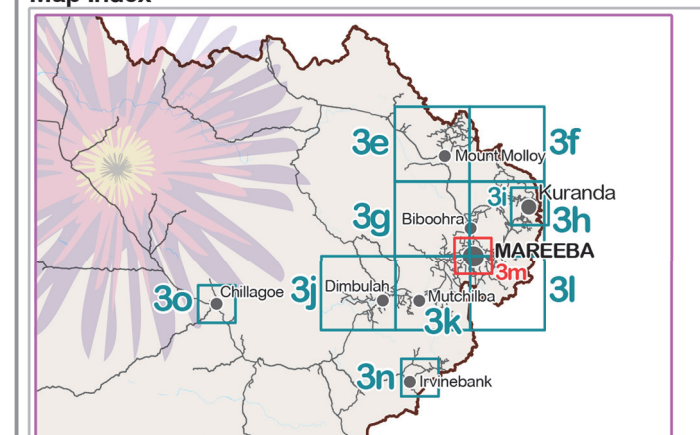
Crown & Council Copyright Reserved.

Note

Where information on the map is obscured by text or other map elements contact Council for a determination.

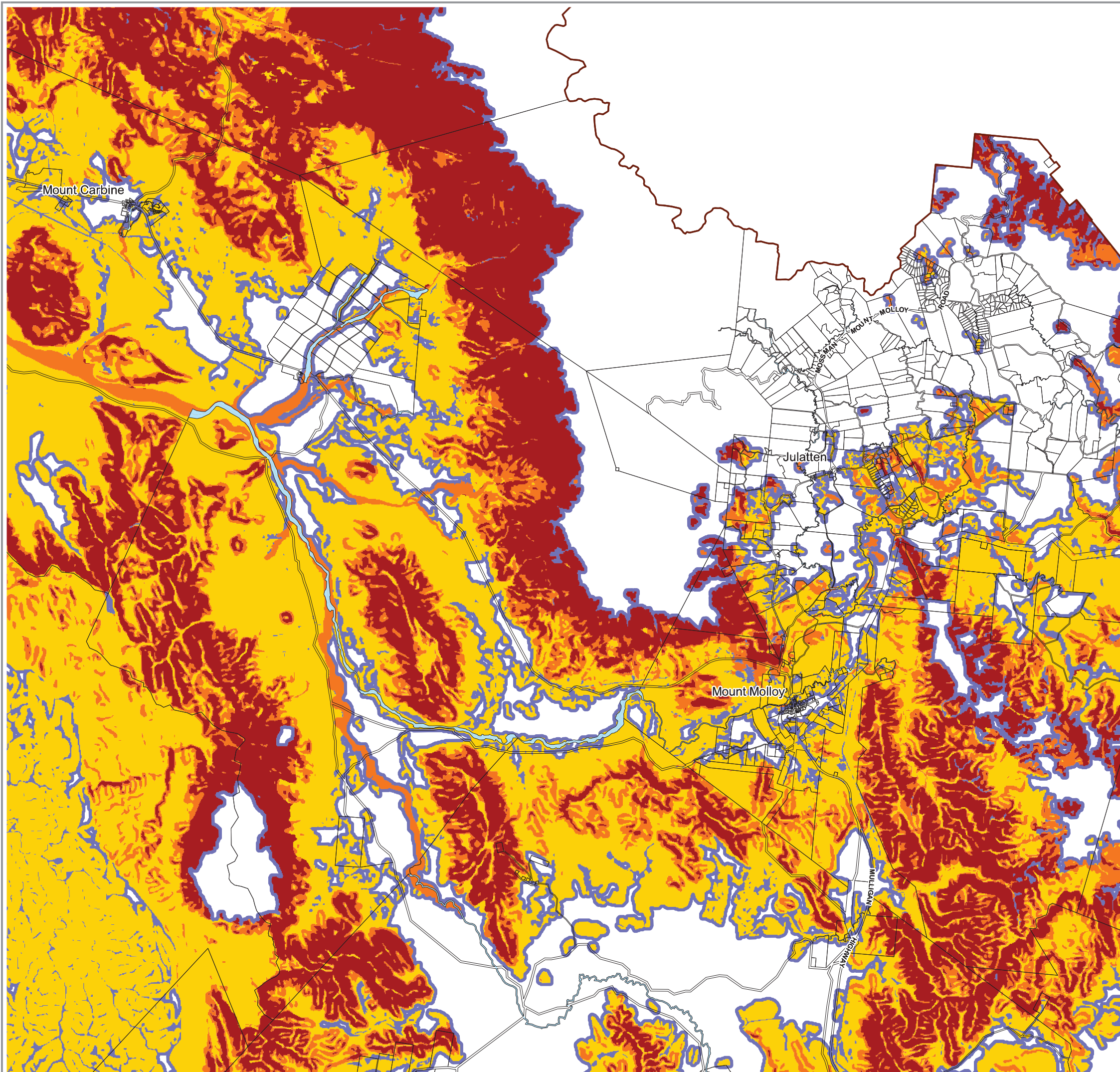


Map Index



Overlay Map Bushfire Hazard- Mount Molloy

OVERLAY MAP - OM003e



LEGEND

Bushfire Hazard

- Very High Potential Bushfire Intensity
- High Potential Bushfire Intensity
- Medium Potential Bushfire Intensity
- Potential Impact Buffer (100 metres)

Other Elements

- Cadastre
- Mareeba Shire Coucil Boundary
- Watercourse

Information

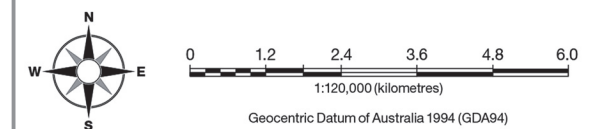
Whilst every care is taken to ensure the accuracy of this product, neither the Mareeba Shire Council or the State of Queensland make any representations or warranties about its accuracy, reliability, completeness or suitability for any particular purpose and disclaims all responsibility and all liability (including without limitation, liability in negligence) for all expenses, losses, damages (including indirect or consequential damage) and costs that may occur as a result of the product being inaccurate or incomplete in any way or for any reason.

All data depicted on this map has been sourced from either the Mareeba Shire Council or the State of Queensland from the latest datasets available at the time of map compilation.

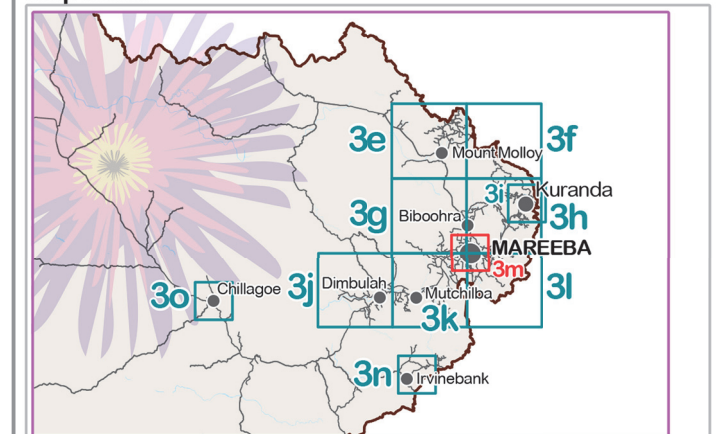
Map compilation date: August 2015.
Crown & Council Copyright Reserved.

Note

Where information on the map is obscured by text or other map elements contact Council for a determination.

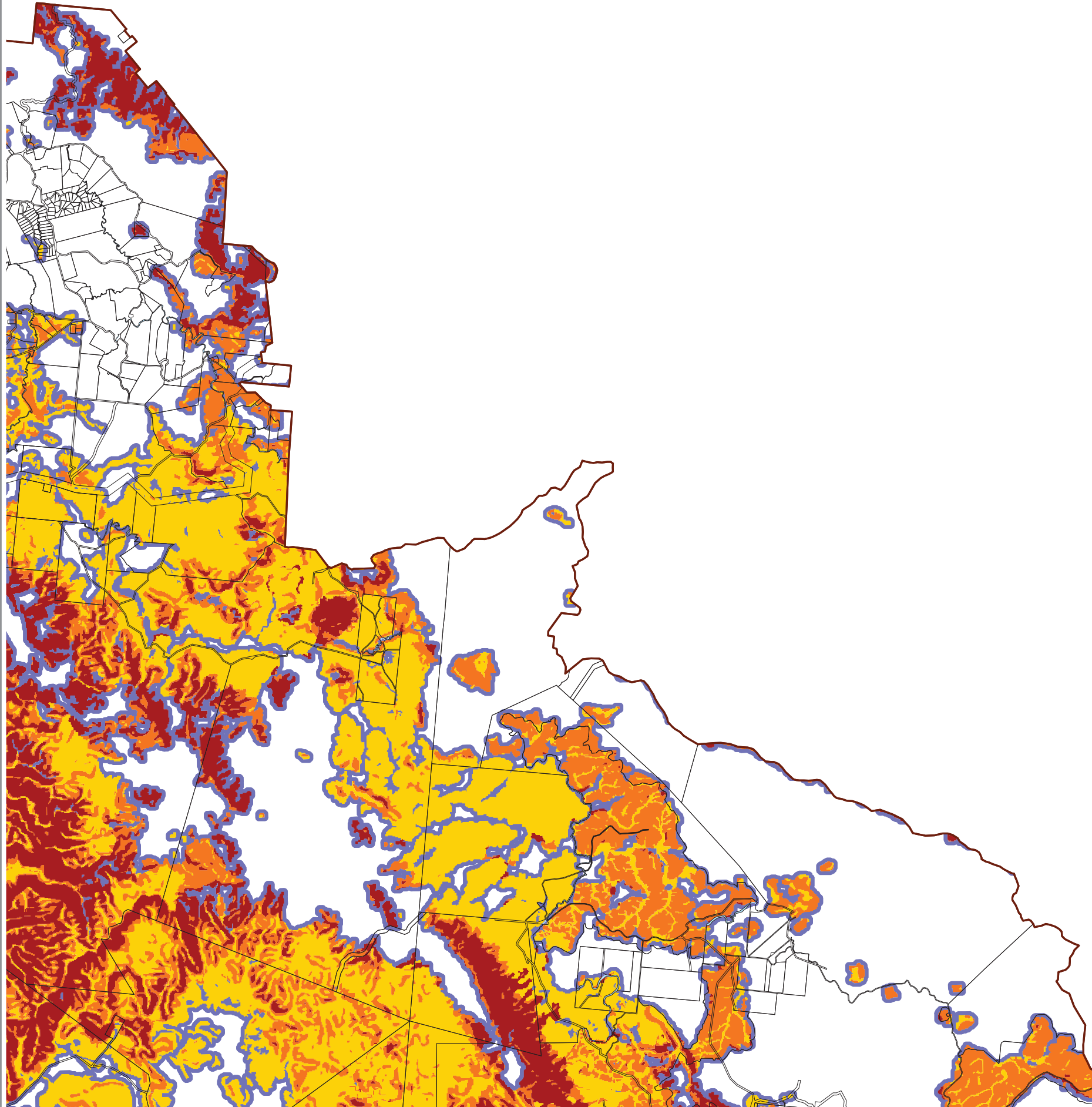


Map Index



Overlay Map Bushfire Hazard- Mona Mona

OVERLAY MAP - OM003f



LEGEND

Bushfire Hazard

- Very High Potential Bushfire Intensity
- High Potential Bushfire Intensity
- Medium Potential Bushfire Intensity
- Potential Impact Buffer (100 metres)

Other Elements

- Cadastre
- Mareeba Shire Coucil Boundary
- Watercourse

Information

Whilst every care is taken to ensure the accuracy of this product, neither the Mareeba Shire Council or the State of Queensland make any representations or warranties about its accuracy, reliability, completeness or suitability for any particular purpose and disclaims all responsibility and all liability (including without limitation, liability in negligence) for all expenses, losses, damages (including indirect or consequential damage) and costs that may occur as a result of the product being inaccurate or incomplete in any way or for any reason.

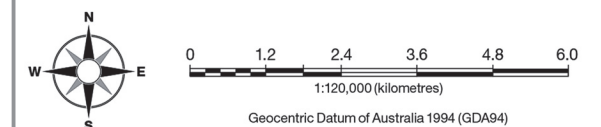
All data depicted on this map has been sourced from either the Mareeba Shire Council or the State of Queensland from the latest datasets available at the time of map compilation.

Map compilation date: August 2015.

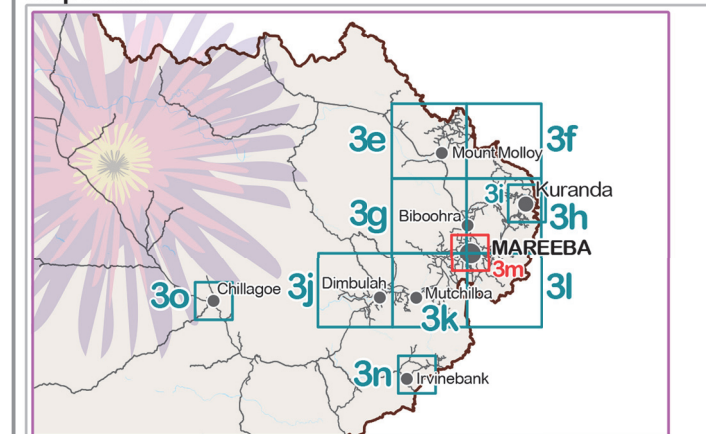
Crown & Council Copyright Reserved.

Note

Where information on the map is obscured by text or other map elements contact Council for a determination.

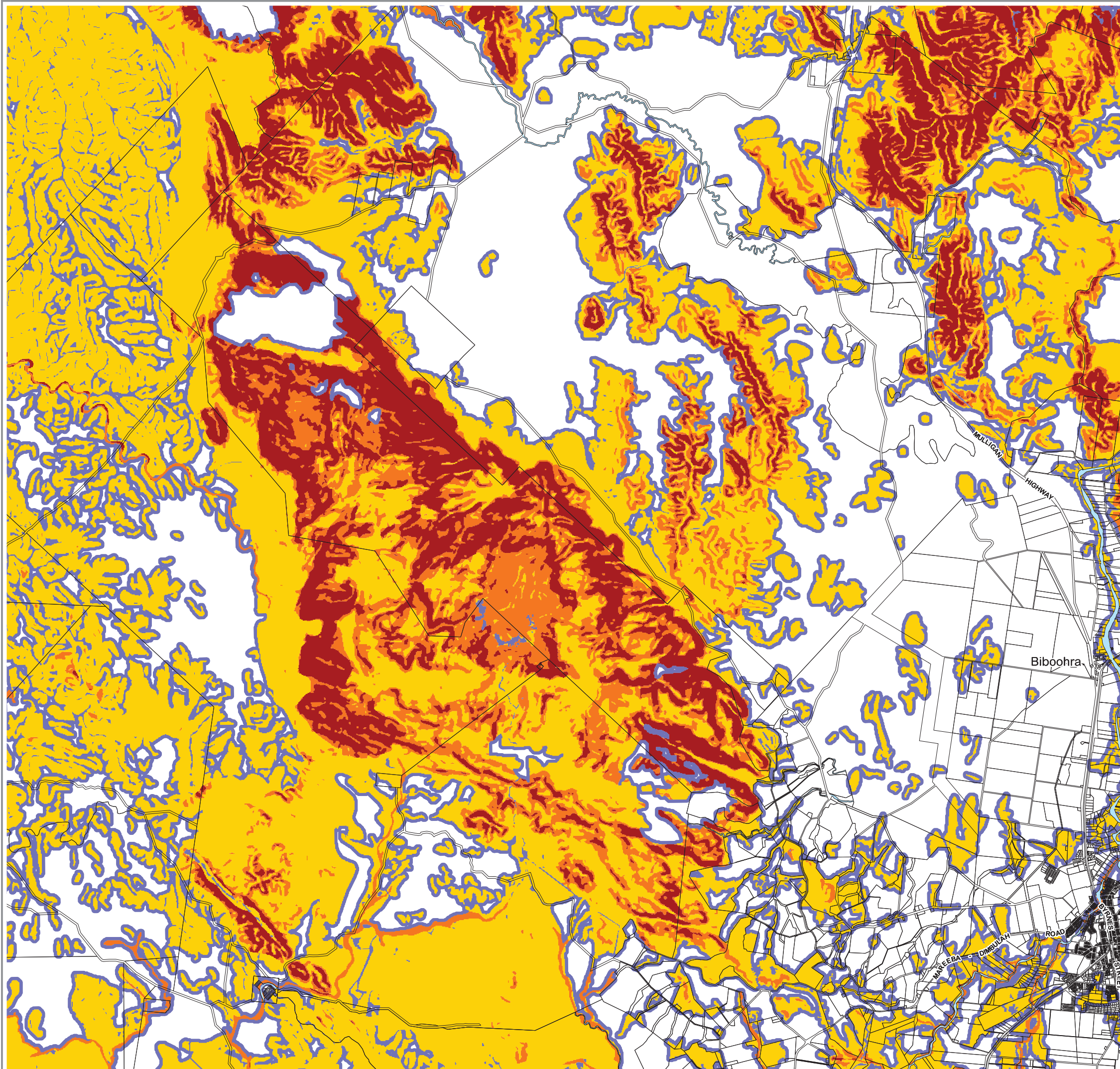


Map Index



Overlay Map Bushfire Hazard- Southedge

OVERLAY MAP - OM003g



LEGEND

Bushfire Hazard

- Very High Potential Bushfire Intensity
- High Potential Bushfire Intensity
- Medium Potential Bushfire Intensity
- Potential Impact Buffer (100 metres)

Other Elements

- Cadastre
- Mareeba Shire Coucil Boundary
- Watercourse

Information

Whilst every care is taken to ensure the accuracy of this product, neither the Mareeba Shire Council or the State of Queensland make any representations or warranties about its accuracy, reliability, completeness or suitability for any particular purpose and disclaims all responsibility and all liability (including without limitation, liability in negligence) for all expenses, losses, damages (including indirect or consequential damage) and costs that may occur as a result of the product being inaccurate or incomplete in any way or for any reason.

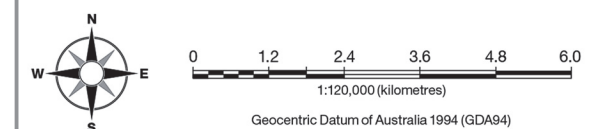
All data depicted on this map has been sourced from either the Mareeba Shire Council or the State of Queensland from the latest datasets available at the time of map compilation.

Map compilation date: August 2015.

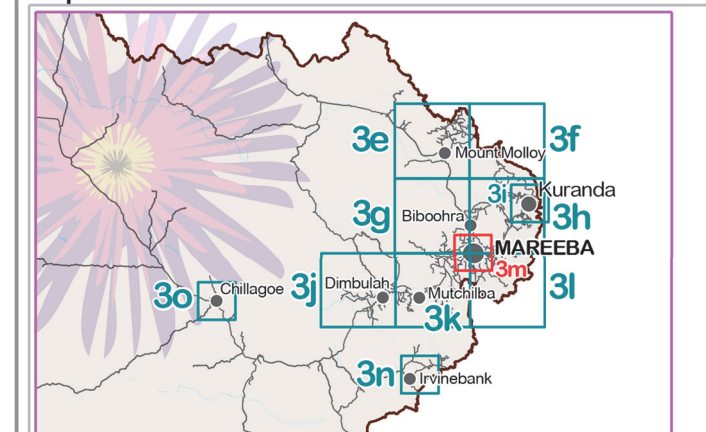
Crown & Council Copyright Reserved.

Note

Where information on the map is obscured by text or other map elements contact Council for a determination.

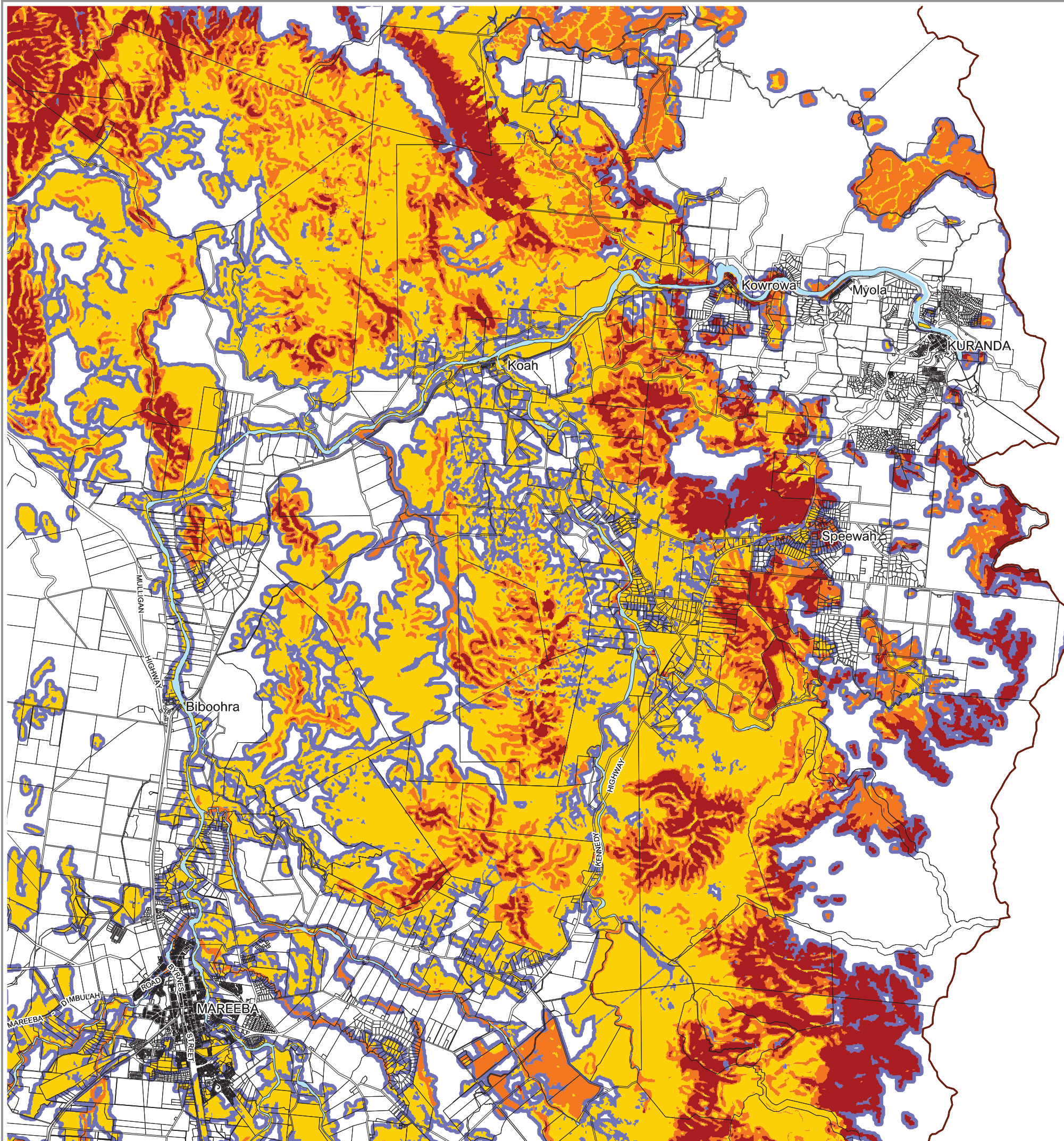


Map Index



Overlay Map Bushfire Hazard- Speewah

OVERLAY MAP - OM003h



LEGEND

Bushfire Hazard

- Very High Potential Bushfire Intensity
- High Potential Bushfire Intensity
- Medium Potential Bushfire Intensity
- Potential Impact Buffer (100 metres)

Other Elements

- Cadastre
- Mareeba Shire Coucil Boundary
- Watercourse

Information

Whilst every care is taken to ensure the accuracy of this product, neither the Mareeba Shire Council or the State of Queensland make any representations or warranties about its accuracy, reliability, completeness or suitability for any particular purpose and disclaims all responsibility and all liability (including without limitation, liability in negligence) for all expenses, losses, damages (including indirect or consequential damage) and costs that may occur as a result of the product being inaccurate or incomplete in any way or for any reason.

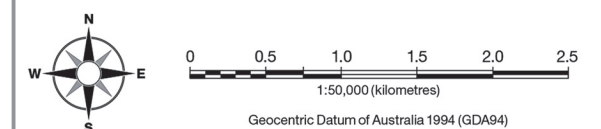
All data depicted on this map has been sourced from either the Mareeba Shire Council or the State of Queensland from the latest datasets available at the time of map compilation.

Map compilation date: August 2015.

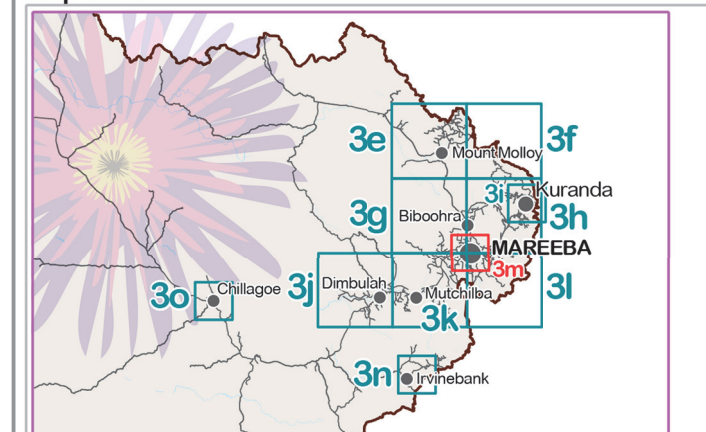
Crown & Council Copyright Reserved.

Note

Where information on the map is obscured by text or other map elements contact Council for a determination.

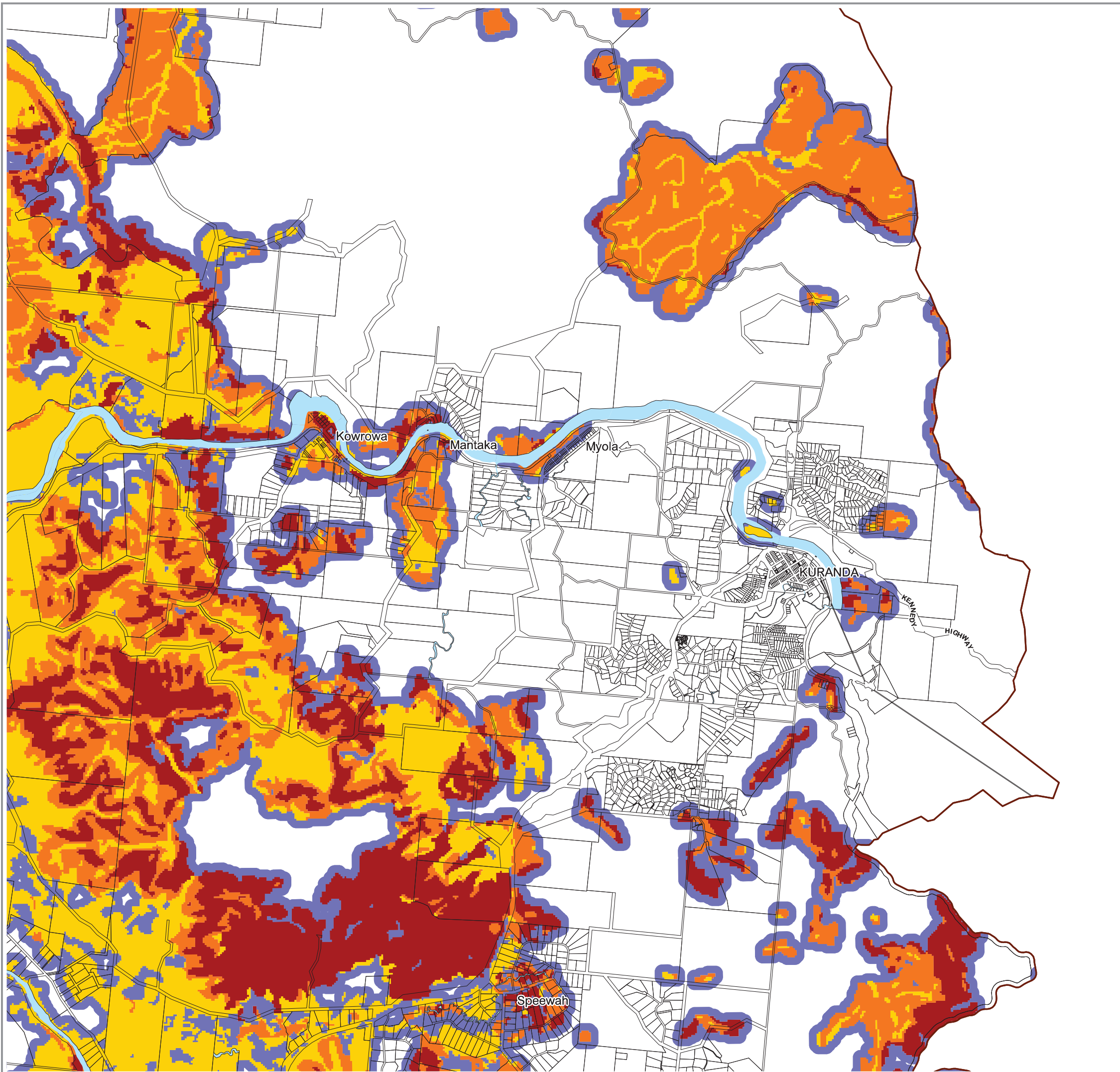


Map Index



Overlay Map Bushfire Hazard- Kuranda

OVERLAY MAP - OM003i



LEGEND

Bushfire Hazard

- Very High Potential Bushfire Intensity
- High Potential Bushfire Intensity
- Medium Potential Bushfire Intensity
- Potential Impact Buffer (100 metres)

Other Elements

- Cadastre
- Mareeba Shire Coucil Boundary
- Watercourse

Information

Whilst every care is taken to ensure the accuracy of this product, neither the Mareeba Shire Council or the State of Queensland make any representations or warranties about its accuracy, reliability, completeness or suitability for any particular purpose and disclaims all responsibility and all liability (including without limitation, liability in negligence) for all expenses, losses, damages (including indirect or consequential damage) and costs that may occur as a result of the product being inaccurate or incomplete in any way or for any reason.

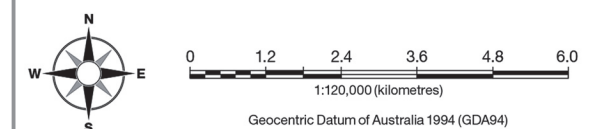
All data depicted on this map has been sourced from either the Mareeba Shire Council or the State of Queensland from the latest datasets available at the time of map compilation.

Map compilation date: August 2015.

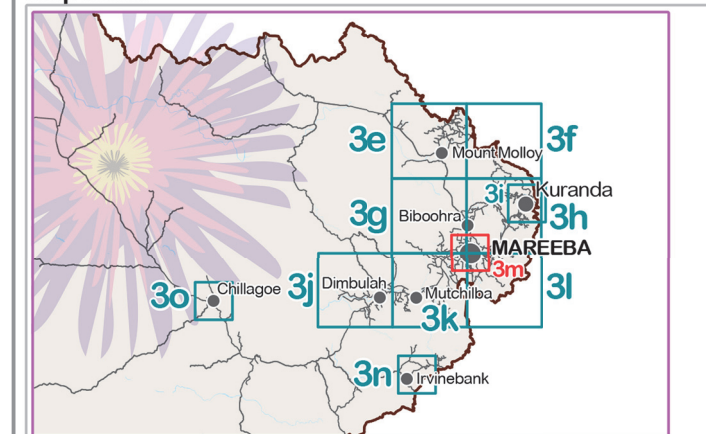
Crown & Council Copyright Reserved.

Note

Where information on the map is obscured by text or other map elements contact Council for a determination.

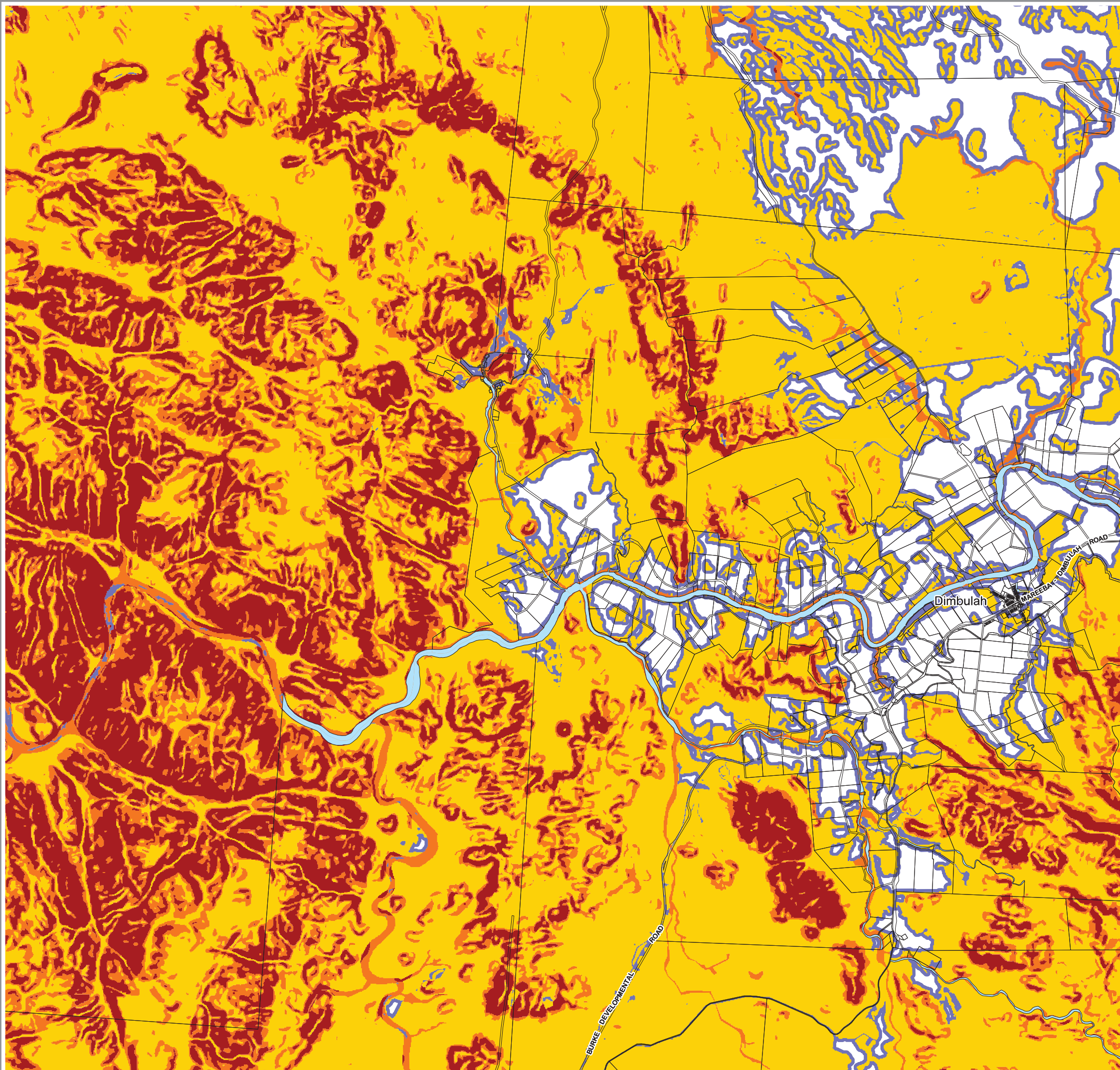


Map Index



Overlay Map Bushfire Hazard- Dimbulah

OVERLAY MAP - OM003j



LEGEND

Bushfire Hazard

- Very High Potential Bushfire Intensity
- High Potential Bushfire Intensity
- Medium Potential Bushfire Intensity
- Potential Impact Buffer (100 metres)

Other Elements

- Cadastre
- Mareeba Shire Coucil Boundary
- Watercourse

Information

Whilst every care is taken to ensure the accuracy of this product, neither the Mareeba Shire Council or the State of Queensland make any representations or warranties about its accuracy, reliability, completeness or suitability for any particular purpose and disclaims all responsibility and all liability (including without limitation, liability in negligence) for all expenses, losses, damages (including indirect or consequential damage) and costs that may occur as a result of the product being inaccurate or incomplete in any way or for any reason.

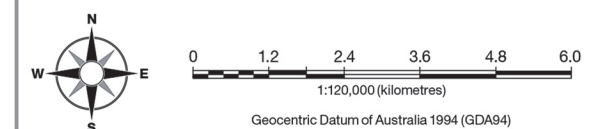
All data depicted on this map has been sourced from either the Mareeba Shire Council or the State of Queensland from the latest datasets available at the time of map compilation.

Map compilation date: August 2015.

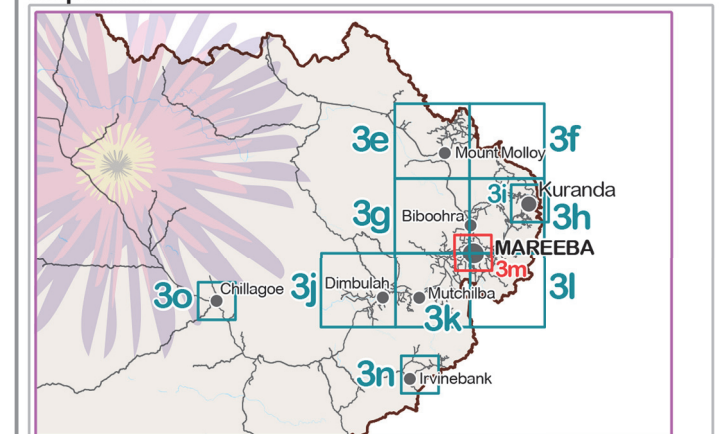
Crown & Council Copyright Reserved.

Note

Where information on the map is obscured by text or other map elements contact Council for a determination.

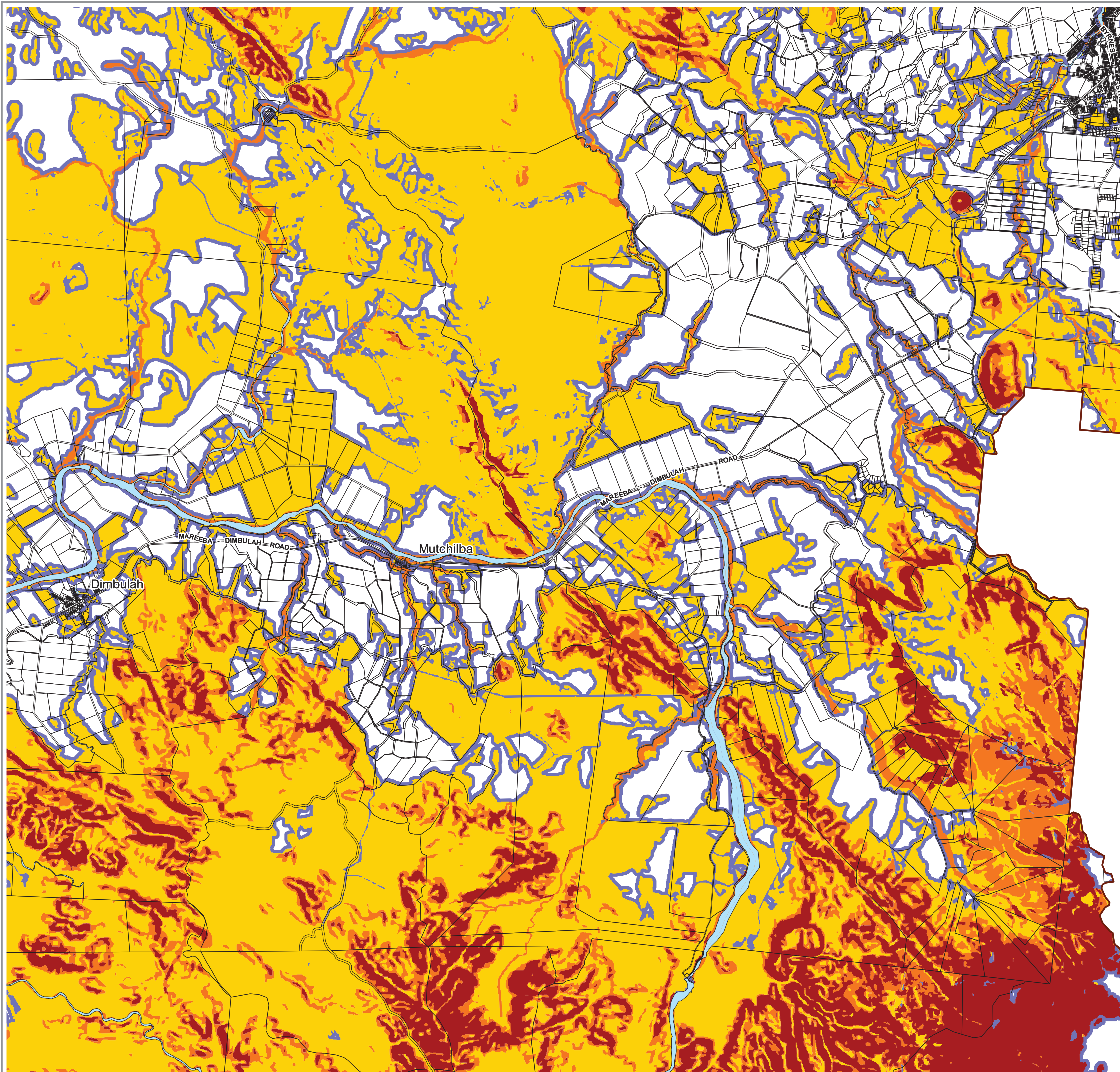


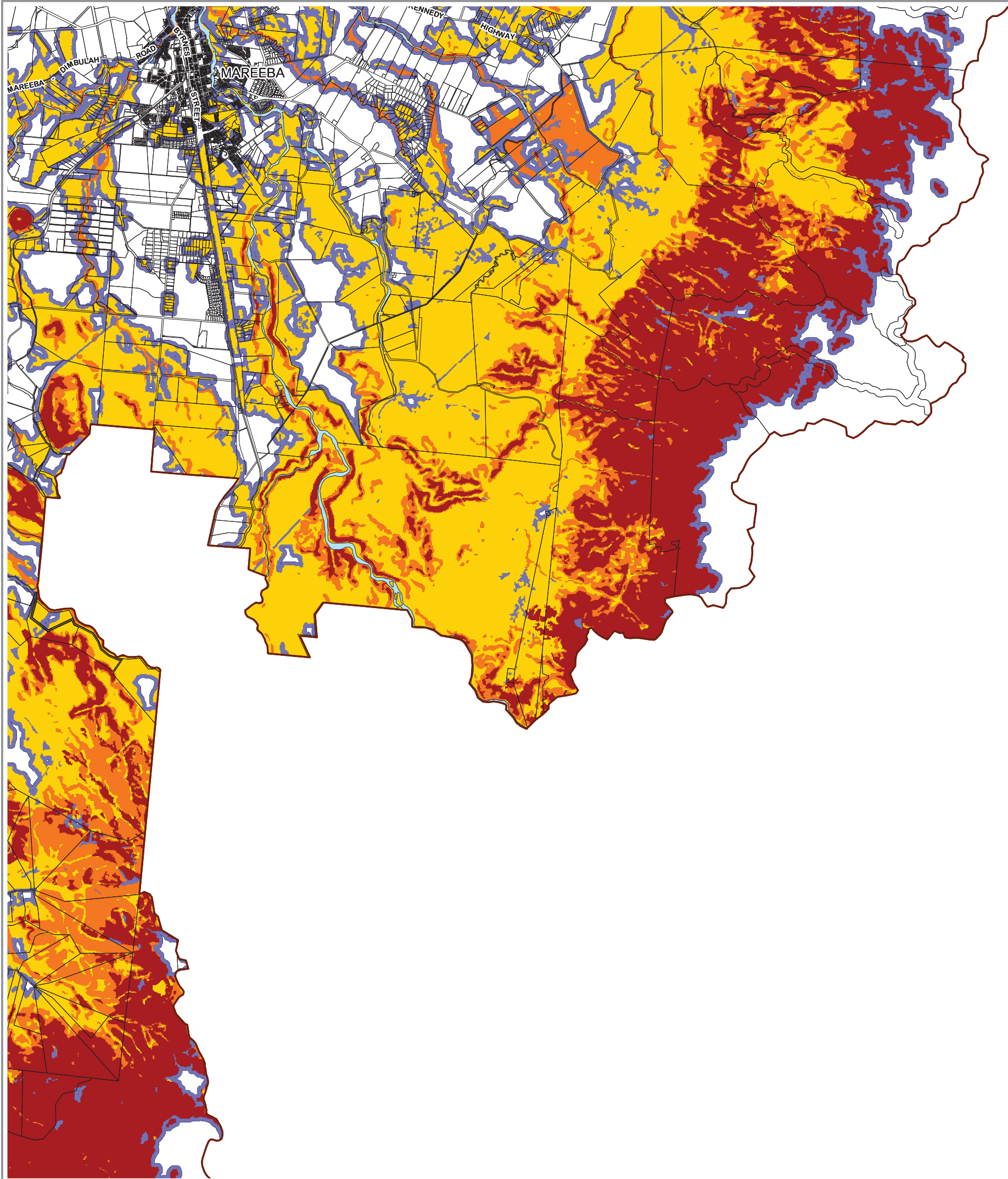
Map Index



Overlay Map Bushfire Hazard- Mutchilba

OVERLAY MAP - OM003k





LEGEND

Bushfire Hazard

- Very High Potential Bushfire Intensity
- High Potential Bushfire Intensity
- Medium Potential Bushfire Intensity
- Potential Impact Buffer (100 metres)

Other Elements

- Cadastral
- Mareeba Shire Council Boundary
- Watercourse

Information

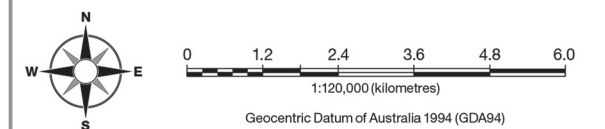
Whilst every care is taken to ensure the accuracy of this product, neither the Mareeba Shire Council or the State of Queensland make any representations or warranties about its accuracy, reliability, completeness or suitability for any particular purpose and disclaims all responsibility and all liability (including without limitation, liability in negligence) for all expenses, losses, damages (including indirect or consequential damage) and costs that may occur as a result of the product being inaccurate or incomplete in any way or for any reason.

All data depicted on this map has been sourced from either the Mareeba Shire Council or the State of Queensland from the latest datasets available at the time of map compilation.

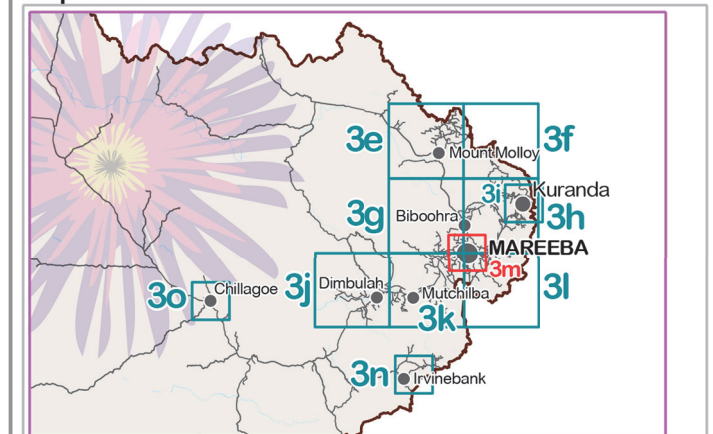
Map compilation date: August 2015.
Crown & Council Copyright Reserved.

Note

Where information on the map is obscured by text or other map elements contact Council for a determination.



Map Index



Overlay Map Bushfire Hazard- Mareeba Southeast

OVERLAY MAP - OM003I

LEGEND

Bushfire Hazard

- Very High Potential Bushfire Intensity
- High Potential Bushfire Intensity
- Medium Potential Bushfire Intensity
- Potential Impact Buffer (100 metres)

Other Elements

- Cadastre
- Mareeba Shire Coucil Boundary
- Watercourse

Information

Whilst every care is taken to ensure the accuracy of this product, neither the Mareeba Shire Council or the State of Queensland make any representations or warranties about its accuracy, reliability, completeness or suitability for any particular purpose and disclaims all responsibility and all liability (including without limitation, liability in negligence) for all expenses, losses, damages (including indirect or consequential damage) and costs that may occur as a result of the product being inaccurate or incomplete in any way or for any reason.

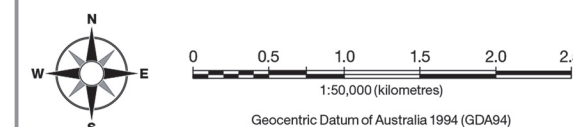
All data depicted on this map has been sourced from either the Mareeba Shire Council or the State of Queensland from the latest datasets available at the time of map compilation.

Map compilation date: August 2015.

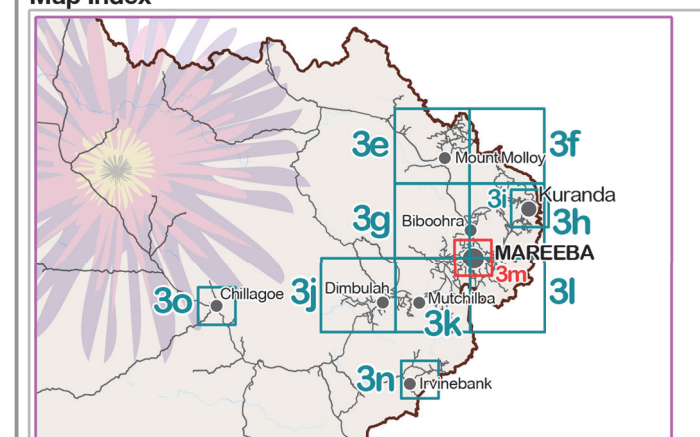
Crown & Council Copyright Reserved.

Note

Where information on the map is obscured by text or other map elements contact Council for a determination.

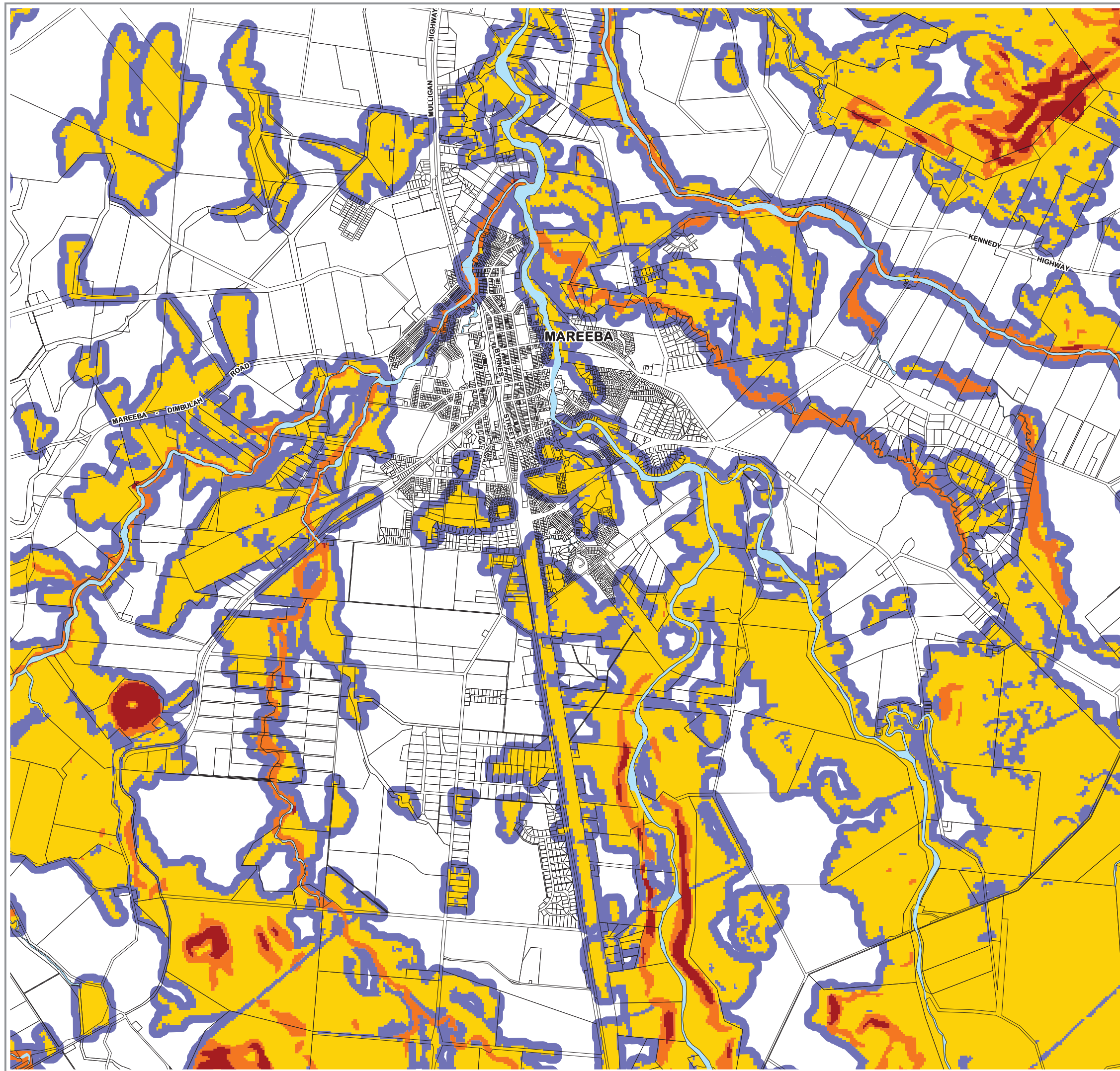


Map Index



Overlay Map Bushfire Hazard- Mareeba

OVERLAY MAP - OM003m



LEGEND

Bushfire Hazard

- Very High Potential Bushfire Intensity
- High Potential Bushfire Intensity
- Medium Potential Bushfire Intensity
- Potential Impact Buffer (100 metres)

Other Elements

- Cadastre
- Mareeba Shire Coucil Boundary
- Watercourse

Information

Whilst every care is taken to ensure the accuracy of this product, neither the Mareeba Shire Council or the State of Queensland make any representations or warranties about its accuracy, reliability, completeness or suitability for any particular purpose and disclaims all responsibility and all liability (including without limitation, liability in negligence) for all expenses, losses, damages (including indirect or consequential damage) and costs that may occur as a result of the product being inaccurate or incomplete in any way or for any reason.

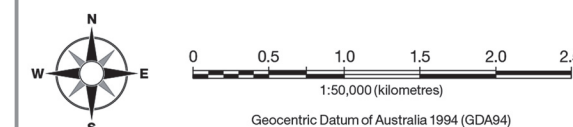
All data depicted on this map has been sourced from either the Mareeba Shire Council or the State of Queensland from the latest datasets available at the time of map compilation.

Map compilation date: August 2015.

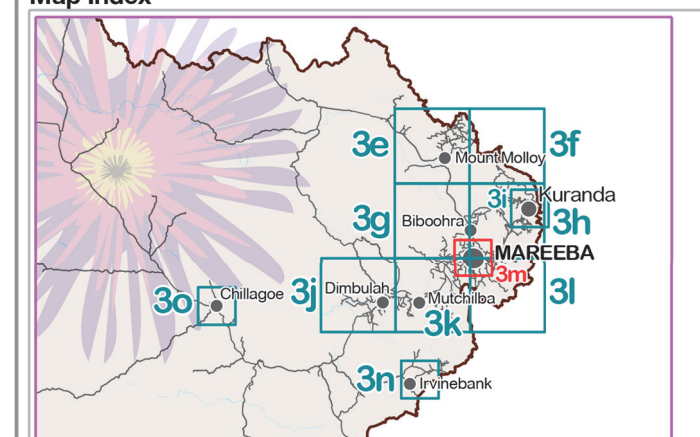
Crown & Council Copyright Reserved.

Note

Where information on the map is obscured by text or other map elements contact Council for a determination.

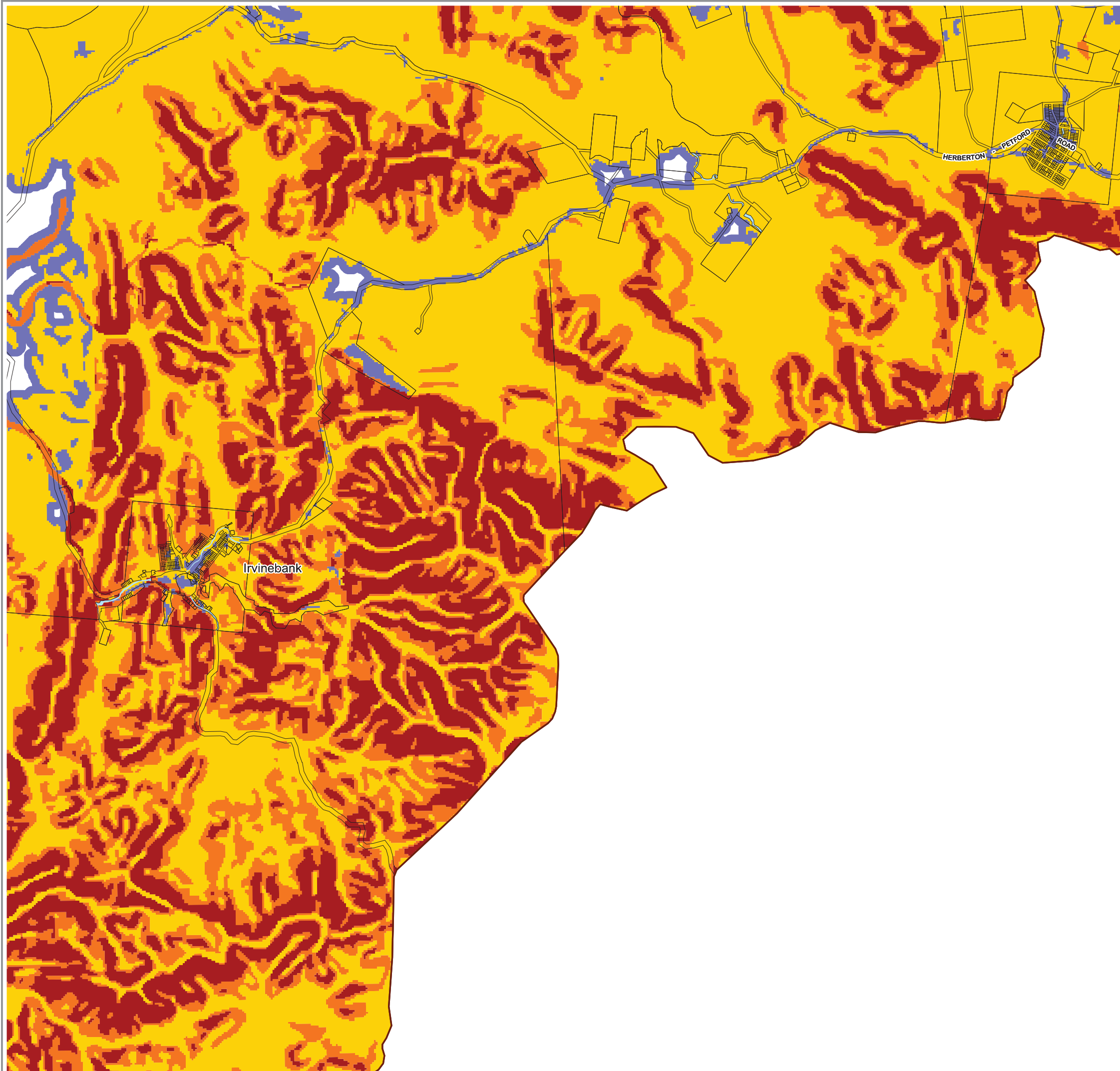


Map Index



Overlay Map Bushfire Hazard- Irvinebank

OVERLAY MAP - OM003n



LEGEND

Bushfire Hazard

- Very High Potential Bushfire Intensity
- High Potential Bushfire Intensity
- Medium Potential Bushfire Intensity
- Potential Impact Buffer (100 metres)

Other Elements

- Cadastre
- Mareeba Shire Coucil Boundary
- Watercourse

Information

Whilst every care is taken to ensure the accuracy of this product, neither the Mareeba Shire Council or the State of Queensland make any representations or warranties about its accuracy, reliability, completeness or suitability for any particular purpose and disclaims all responsibility and all liability (including without limitation, liability in negligence) for all expenses, losses, damages (including indirect or consequential damage) and costs that may occur as a result of the product being inaccurate or incomplete in any way or for any reason.

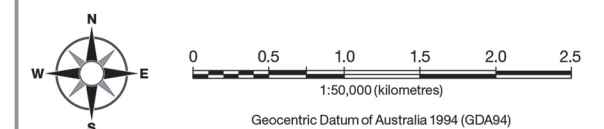
All data depicted on this map has been sourced from either the Mareeba Shire Council or the State of Queensland from the latest datasets available at the time of map compilation.

Map compilation date: August 2015.

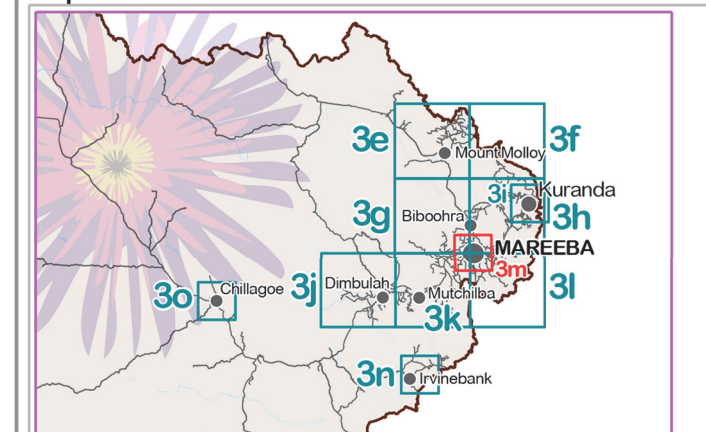
Crown & Council Copyright Reserved.

Note

Where information on the map is obscured by text or other map elements contact Council for a determination.



Map Index



Overlay Map Bushfire Hazard- Chillagoe

OVERLAY MAP - OM003o