

Welcome to the **Mareeba Shire**



**A GROWING, CONFIDENT &
SUSTAINABLE SHIRE**

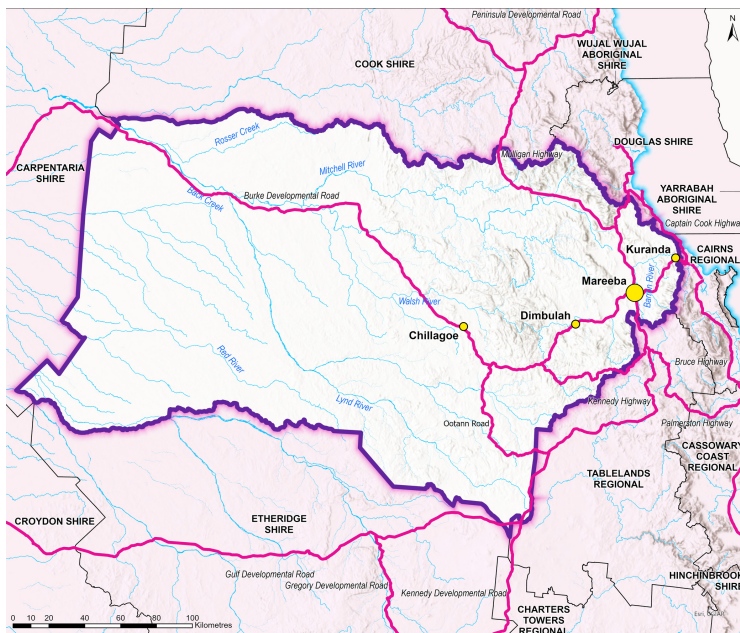


Mareeba
SHIRE COUNCIL

Move to Mareeba Shire

Located in the beautiful, tropical north of Australia, the Mareeba Shire is in proximity to two World Heritage Areas, the Great Barrier Reef, and Wet Tropics, and is less than an hour's drive to Cairns, with an International Airport, cafes, restaurants, theatres and tropical beaches. The Shire stretches across the base of Cape York Peninsula, and comprises rural and remote agricultural communities, Indigenous communities, and world class tourism destinations.

Tropical North Queensland is undeniably one of the most exciting and diverse regions in Australia, with Mareeba Shire welcoming residents and visitors as the Gateway to the Outback. The area boasts up to 300 sunny days a year and with something new and different to explore around every bend in the road, the Mareeba Shire is a unique blend of historic trails, paddock to plate dining experiences and natural wonders.



The Mareeba Shire is a food lovers' paradise, and the region is acknowledged by birding experts as the richest region for birdlife in Australia.

At the centre of the region is the township of Mareeba, a busy town with a population of just under 12,000 in the district (ABS 2021 Census), which acts as a vital services and transport hub for Northern Australia.



Affordable Living



There are a diverse range of housing options waiting for you to call home in the Mareeba Shire. From units and townhouses to country cottages, modern family homes and acreage land with panoramic views, you'll be surprised by the quality and variety of affordable housing. The median house price in Australia is \$709,130, but in the Mareeba Shire, it is significantly lower at \$448,947 while the median rent for a three-bedroom house in the region is just \$385 per week, compared to the Australian national average of \$499 per week.

For 94% of people who live and work in Mareeba, their journey to work is less than 10km, with 29% of Mareeba resident workers travelling less than 2.5km to work (ABS 2016 Census). Lack of congestion and less time spent travelling to and from work, means less traffic congestion, less noise and pollution, less travel expense, and more time to spend with family and leisure activities.



Food, Culture & Entertainment

From farm fresh produce, waterfalls, lakes, historic trails, breathtaking scenery, watersports, horse sports, fishing, mountain biking and cycling trails, bush walking and abundant wildlife, there is something new and different to discover at every opportunity. A Shire of diversity with a vibrant, multicultural population and landscapes that vary from World Heritage Rainforest and breathtaking waterfalls to productive agricultural farms and savannah cattle properties.

16.9% of the Mareeba Shire population were born overseas with over 75 nationalities represented in the community. Each year the Shire comes together to celebrate the diversity of the region with a Multicultural Festival (August) featuring a day of music, food and dance. Mareeba also plays host to annual events such as the Mareeba Rodeo (July) and Savannah in the Round music festival with performing musicians from around the world (October).

The Mareeba Shire is well served by an extensive network of beautiful parks, playgrounds and recreation areas just waiting to be discovered, so pack a picnic, grab some friends and family, and enjoy the region's countless natural areas. Mareeba also offers many sporting, cultural and historical clubs catering for all ages and interests.



Photo credit: Tourism & Events Queensland

Thriving Industry



The Mareeba Shire was recently ranked 6th in the top ten fastest growing regions in Queensland (QLD Government Statistician's Office, ABS 30 March 2021). The opportunities for workforce growth, innovation and variety of work abound in the Mareeba Shire.

The agricultural, forestry and fishing industry employs the highest proportion of the shire's workforce (16.9%) so it is not surprising that the most common occupations are labourers (16.2%) and managers (15.3%) (ABS 2021 Census). The other top industry subdivisions of employment are health care and social assistance (12.7%), education and training (8.3%), retail trade (8.1%), public administration and safety (7.3%), and construction (7.7%).



Mareeba Focus

The township of Mareeba is a terrific place for the whole family to live, work and play. There are 4 schools in Mareeba; St Thomas of Villanova Parish Primary School, Mareeba State Primary School, St Stephens Catholic College, and the Mareeba State High School, along with several regulated early childhood education and care services, and two universities, located only one hour away in Cairns.

Mareeba is also well served by both private and public health services including the hospital, several GP clinics and dental clinics, medical imaging, and a variety of allied health services. In addition, there are two aged care residential facilities located in the Shire.

Sport & Recreation clubs include:

Mareeba Golf Club

Mareeba Motor Racing Club (Mareeba Speedway)

Mareeba Cricket Club

Mareeba Pony Club

Mareeba Rugby League Club

Mareeba Netball Club

Mareeba Academy of Dance, Debbie's Dance Academy, Dance for Life – Ballroom & Latin Dancing

Tai Chi Mareeba

Springmount Raceway

Mareeba Mountain Goats Mountain Biking Club

Mareeba Historical Society

Mareeba & Memorial Bowls Club Inc.

Mareeba Scout Group & Girl Guides

Mareeba Touch Association

Mareeba Gymnastics Club

Mareeba Swimming Pool

PCYC Mareeba

Mareeba Turf Club

Mareeba United Football Club

Mareeba Yoga

Mareeba Rodeo

North QLD Aero Club

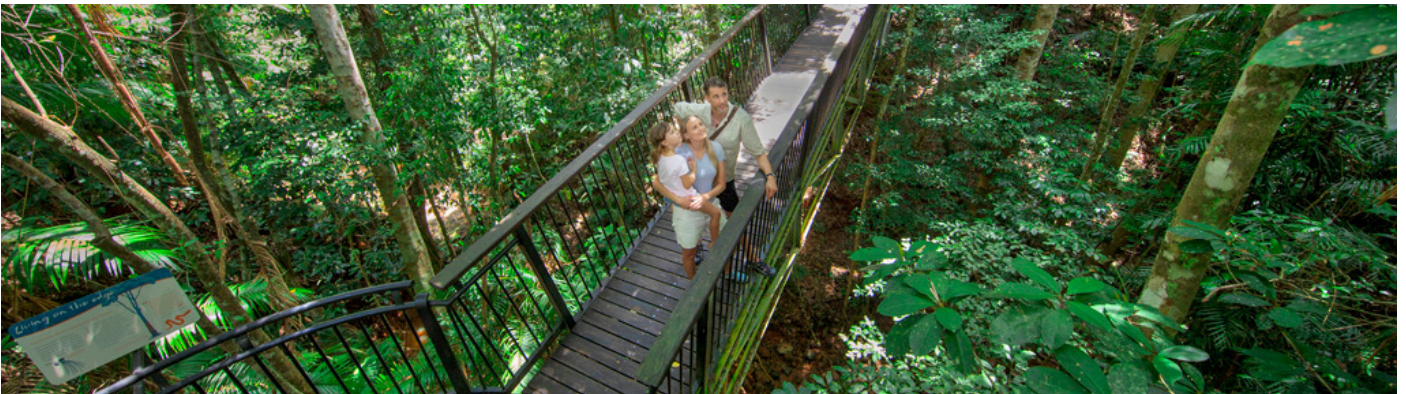
Mareeba Art Society

A variety of martial arts groups





Photo credit: Tourism & Events Queensland




Mareeba Shire is perfectly positioned, with the option to choose suburban or country life, and the city of Cairns with an international airport, only a short drive away.

Enjoy unrivalled access to nature, lower cost of living, less time commuting and a stronger connection with family, community, and the environment.

We can't wait to welcome you to the Shire!



Contact Us

1300 308 461 

info@msc.qld.gov.au 

www.msc.qld.gov.au 