

Mareeba – Dimbulah Road, Mareeba Heavy Vehicle Bypass, planning Survey

Previous planning studies have identified a proposed alignment for the Mareeba Heavy Vehicle Bypass on the western side of Mareeba.

The Department of Transport and Main Roads (TMR) started a new planning project to confirm the alignment of the bypass and identify a viable delivery strategy. This planning is necessary to allow TMR to seek funding for design and construction of the bypass.

TMR invites the Mareeba community and road users to provide input on traffic issues in Mareeba and feedback on the proposed bypass, which will be used to inform the project planning outcomes.

Submissions close 23 February 2023.

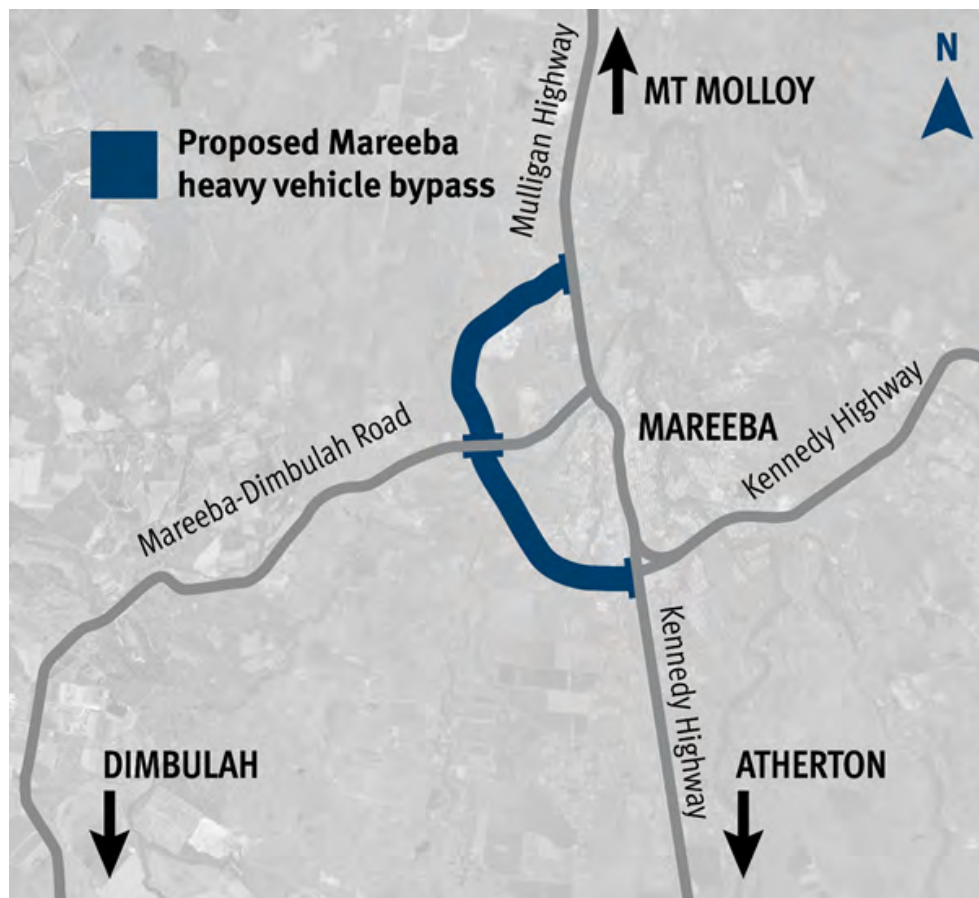
You can provide feedback by completing the survey below and return it to TMR at:

Department of Transport and Main Roads

Far North District,

PO Box 6185

CAIRNS QLD 4870



1. TMR is seeking input from people who live in, own a business in or regularly drive through Mareeba. Tell TMR about yourself.

Select all options that apply

- I live in Mareeba
- I operate a business in Mareeba's Central Business District (CBD)
- I operate a business in the Mareeba area (outside the Mareeba CBD)
- I regularly visit the Mareeba area
- I regularly visit businesses in Mareeba's CBD
- I drive a car
- I drive a truck
- I ride a bike
- I regularly travel through Mareeba
- When I drive through Mareeba, I rarely stop there
- When I drive through Mareeba, I regularly stop there

2. Mareeba's main street, Byrnes Street, is a state-controlled road. How do you feel about Byrnes Street?

Rate how much you agree or disagree with the following statements (please tick one).

I feel safe when I cross Byrnes Street as a pedestrian

- Strongly disagree
- Disagree
- Neither agree/ disagree
- Agree
- Strongly agree

I feel safe driving on Byrnes Street

- Strongly disagree
- Disagree
- Neither agree/ disagree
- Agree
- Strongly agree

I feel safe riding a bike on Byrnes Street

- Strongly disagree
- Disagree
- Neither agree/ disagree
- Agree
- Strongly agree

The signalised pedestrian crossing (Post Office) has improved safety

- Strongly disagree
- Disagree
- Neither agree/ disagree
- Agree
- Strongly agree

The raised pedestrian facilities have improved safety

- Strongly disagree
- Disagree
- Neither agree/ disagree
- Agree
- Strongly agree

There are too many heavy vehicles on Byrnes Street

- Strongly disagree
- Disagree
- Neither agree/ disagree
- Agree
- Strongly agree

There are too many cars on Byrnes Street

- Strongly disagree
- Disagree
- Neither agree/ disagree
- Agree
- Strongly agree

There are too many vehicles towing caravans and trailers on Byrnes Street

- Strongly disagree
- Disagree
- Neither agree/ disagree
- Agree
- Strongly agree

There are not enough car parks on Byrnes Street

- Strongly disagree
- Disagree
- Neither agree/ disagree
- Agree
- Strongly agree

Byrnes Street should be one lane in each direction

- Strongly disagree
- Disagree
- Neither agree/ disagree
- Agree
- Strongly agree

I try to avoid Byrnes Street if I can

- Strongly disagree
- Disagree
- Neither agree/ disagree
- Agree
- Strongly agree

There is not enough vegetation on Byrnes Street

- Strongly disagree
- Disagree
- Neither agree/ disagree
- Agree
- Strongly agree

Byrnes Street is an attractive main street

- Strongly disagree
- Disagree
- Neither agree/ disagree
- Agree
- Strongly agree

Byrnes Street is a bottleneck for heavy vehicles.

- Strongly disagree
- Disagree
- Neither agree/ disagree
- Agree
- Strongly agree

The intersections on Byrnes Street need improvement.

- Strongly disagree
- Disagree
- Neither agree/ disagree
- Agree
- Strongly agree

Are there any comments you would like to add about Byrnes Street?

3. Local roads in Mareeba are also affected by traffic from outside the town. What local roads or intersections are you concerned about?

4. How does heavy traffic in Mareeba affect residents and businesses?

5. Are there any comments you would like to add about Mareeba's road network?

6. Previous planning has identified a proposed alignment for a bypass on the western side of Mareeba.

**How do you feel about the proposed bypass?
Rate how much you agree or disagree with each of the following statements when completing this sentence, 'The proposed Mareeba Heavy Vehicle Bypass would...'**

Reduce the number of heavy vehicles on Byrnes Street

- Strongly disagree
- Disagree
- Neither agree/ disagree
- Agree
- Strongly agree

Improve safety on Byrnes Street

- Strongly disagree
- Disagree
- Neither agree/ disagree
- Agree
- Strongly agree

Provide opportunities to make Byrnes Street more appealing

- Strongly disagree
- Disagree
- Neither agree/ disagree
- Agree
- Strongly agree

Reduce travel time for through traffic

- Strongly disagree
- Disagree
- Neither agree/ disagree
- Agree
- Strongly agree

Negatively impact the trade of businesses in Mareeba's CBD

- Strongly disagree
- Disagree
- Neither agree/ disagree
- Agree
- Strongly agree

Reduce noise, vibration and air pollution on Byrnes Street

- Strongly disagree
- Disagree
- Neither agree/ disagree
- Agree
- Strongly agree

Attract more visitors to the Mareeba area

- Strongly disagree
- Disagree
- Neither agree/ disagree
- Agree
- Strongly agree

Improve economic opportunities for the Mareeba area

- Strongly disagree
- Disagree
- Neither agree/ disagree
- Agree
- Strongly agree

7. How supportive are you of the proposed Mareeba Heavy Vehicle Bypass on the western side of Mareeba?

- Strongly opposed
- Opposed
- Neutral
- Supportive
- Strongly supportive

8. Construction of the proposed bypass is currently unfunded. If funding becomes available and the bypass is constructed, how often do you expect to travel on the bypass?

- Every day
- Several times a week
- Several times a month
- Several times a year
- Once a year or less

9. If funding becomes available and the bypass is constructed, how often do you expect to continue to travel on Byrnes Street?

- Every day
- Several times a week
- Several times a month
- Several times a year
- Once a year or less

10. Do you have any other comments about the proposed Mareeba Heavy Vehicle Bypass

11. Are there other locations for a bypass that should be considered?

Please return the survey to:

**Department of Transport and Main Roads
Far North District
PO Box 6185 CAIRNS QLD 4870**

For project enquiries:

Phone: (07) 4045 7191

Email: cairns.office@tmr.qld.gov.au

Website: tmr.qld.gov.au/projects/Mareeba-Dimbulah-Road-Mareeba-Bypass

Post: PO Box 6185 Cairns QLD 4870