



9 November 2022

Planning Officer: Carl Ewin
Direct Phone: 4086 4656
Our Reference: MCU/22/0021
Your Reference: F22/22

Selena Carabot
C/- Freshwater Planning Pty Ltd
17 Barronview Drive
FRESHWATER QLD 4870

Dear Applicants,

Decision Notice

Planning Act 2016

I refer to your application and advise that on 8 November 2022 under delegated authority, Council decided to approve the application in full subject to conditions.

Details of the decision are as follows:

APPLICATION DETAILS

Application No:	MCU/22/0021
Street Address:	19 Herberton Street, Mareeba
Real Property Description:	Lot 16 on RP700549
Planning Scheme:	Mareeba Shire Council Planning Scheme 2016

DECISION DETAILS

Type of Decision:	Approval
Type of Approval:	Development Permit for Reconfiguring a Lot - Subdivision (1 into 2 Lots) and Material Change of Use - Dual Occupancy
Date of Decision:	8 November 2022

CURRENCY PERIOD OF APPROVAL

The currency periods for this development approval are as follows;

- Reconfiguring a Lot – four (4) years (starting the day the approval takes effect);
- Material Change of Use – six (6) years (starting the day the approval takes effect);

(Refer to Section 85 "Lapsing of approval at end of currency period" of the *Planning Act 2016*.)

INFRASTRUCTURE

Where conditions relate to the provision of infrastructure, these are non-trunk infrastructure conditions unless specifically nominated as a "*necessary infrastructure condition*" for the provision of trunk infrastructure as defined under Chapter 4 of the *Planning Act 2016*.

ASSESSMENT MANAGER CONDITIONS

(A) ASSESSMENT MANAGER'S CONDITIONS (COUNCIL)

(a) Development assessable against the Planning Scheme

Reconfiguring a Lot - Subdivision (1 into 2 Lots) Component

1. Development must be carried out substantially in accordance with the approved plans and the facts and circumstances of the use as submitted with the application, and subject to any alterations:
 - found necessary by the Council's delegated officer at the time of examination of the engineering plans or during construction of the development because of particular engineering requirements; and
 - to ensure compliance with the following conditions of approval.
2. Timing of Effect
 - 2.1 The conditions of the development permit must be complied with to the satisfaction of Council's delegated officer prior to the endorsement of the plan of survey, except where specified otherwise in these conditions of approval.
 - 2.2 The Reconfiguring a Lot - Subdivision (1 into 2 Lots) component of this approval must be acted upon and Lots 1 and 2 created before the Material Change of Use - Dual Occupancy component can be acted upon.
3. General
 - 3.1 The applicant/developer is responsible for the cost of necessary alterations to existing public utility mains, services or installations required by works in relation to the proposed development or any works required by condition(s) of this approval.
 - 3.2 All payments or bonds required to be made to the Council pursuant to any condition of this approval or the Adopted Infrastructure Charges Notice must be made prior to the endorsement of the plan of survey and at the rate applicable at the time of payment.

3.3 The developer must relocate (in accordance with FNQROC standards) any services such as water, sewer, drainage, telecommunications and electricity that are not wholly located within the lots that are being created/serviced where required by the relevant authority, unless approved by Council's delegated officer.

3.4 Where utilities (such as sewers on non-standard alignments) traverse lots to service another lot, easements must be created in favour of Council for access and maintenance purposes. The developer is to pay all costs (including Council's legal expenses) to prepare and register the easement documents.

The common boundary between the lots can be moved to the north within 800mm of the existing sewer main in order to avoid the need for an easement. If an easement is required, the easement must have a width of no less than 3 metres, with the sewer main positioned in the centre of the easement.

3.5 Where approved existing buildings and structures are to be retained, setbacks to any new property boundaries are to be in accordance with Planning Scheme requirements for the relevant structure and/or Queensland Development Code.

3.6 All works must be designed, constructed and carried out in accordance with FNQROC Development Manual requirements (as amended) and to the satisfaction of Council's delegated officer.

3.7 Charges

All outstanding rates, charges and expenses pertaining to the land are to be paid in full.

4. Infrastructure Services and Standards

4.1 Access

Both existing access crossovers servicing the existing duplex on Lot 1 must be upgraded (from the edge of the road pavement to the property boundary of the lot) in accordance with FNQROC Development Manual standards, to the satisfaction of Council's delegated officer.

An access crossover servicing Lot 2 must be installed (from the edge of the road pavement to the property boundary of the lot) in accordance with FNQROC Development Manual standards, to the satisfaction of Council's delegated officer. The access works for Lot 2 can be bonded (for a period of 1 year, or further period agreed to by Council officers) and at the rate of 150% of the cost of the access crossover works in order to allow the development of the dual occupancy component to occur. Quotations for the access works to determine the bond amount must be accepted by Council's delegated officer.

The applicant/developer is to make a single application for driveway access onto a Council road. The application is to be accompanied by the relevant fee

and will be required to certify or be assessed for compliance by Council's delegated officer.

4.2 Stormwater Drainage

4.2.1 The applicant/developer must take all necessary steps to ensure a non-worsening effect on surrounding land as a consequence of each stage of the development and must take all reasonable and practical measures to ensure discharge occurs in compliance with the Queensland Urban Drainage Manual (QUDM) and the FNQROC Development Manual, to the satisfaction of Council's delegated officer.

4.2.2 All stormwater drainage must be discharged to an approved legal point of discharge.

4.3 Water Supply

4.3.1 The developer must provide each proposed allotment with a water service connection in accordance with FNQROC Development Manual standards (as amended) to the satisfaction of Council's delegated officer.

4.3.2 Where the existing reticulated water supply does not currently service the site or is not at an adequate capacity, the developer is required to extend or upgrade the reticulated water supply infrastructure to connect the site to Council's existing infrastructure at a point that has sufficient capacity to service the development in accordance with FNQROC Development Manual standards (as amended).

4.4 Sewerage Connection

4.4.1 The developer must provide a connection for each proposed allotment to Council's reticulated sewerage system in accordance with FNQROC Development Manual standards (as amended) to the satisfaction of Council's delegated officer.

4.4.2 Where sewerage connections are not available to the site, or where existing connections are not satisfactory for the proposed development, the developer is required to extend or upgrade the reticulated sewerage infrastructure to connect the site to Council's existing infrastructure at a point that has sufficient capacity to service the development in accordance with FNQROC Development Manual standards (as amended).

4.5 Electricity provision/supply

The applicant/developer must ensure that an appropriate level of electricity supply is provided to each lot in accordance with FNQROC Development

Manual standards (as amended) to the satisfaction of Council's delegated officer.

Written advice from an Electricity Service Provider is to be provided to Council indicating that an agreement has been made for the provision of power reticulation.

4.6 Telecommunications

The applicant/developer must demonstrate that a connection to the national broadband network is available for each allotment, or alternatively, enter into an agreement with a telecommunication carrier to provide telecommunication services to each lot and arrange provision of necessary conduits and enveloping pipes.

Material Change of Use - Dual Occupancy Component

1. Development must be carried out substantially in accordance with the approved plans and the facts and circumstances of the use as submitted with the application, subject to any alterations:
 - found necessary by Council's delegated officer at the time of examination of the engineering plans or during construction of the development because of particular engineering requirements; and
 - to ensure compliance with the following conditions of approval.
2. Timing of Effect
 - 2.1 The conditions of the development permit must be complied with to the satisfaction of Council's delegated officer prior to the commencement of the use except where specified otherwise in these conditions of approval.
 - 2.2 Prior to the commencement of use, the applicant must notify Council that all the conditions of the development permit have been complied with, except where specified otherwise in these conditions of approval.
 - 2.3 The Reconfiguring a Lot - Subdivision (1 into 2 Lots) component of this approval must be acted upon and Lots 1 and 2 created before the Material Change of Use - Dual Occupancy component can be acted upon.
3. General
 - 3.1 The development approval would not have been issued if not for the conditions requiring the construction of infrastructure.
 - 3.2 The applicant/developer is responsible for the cost of necessary alterations to existing public utility mains, services or installations required by works in relation to the proposed development or any works required by condition(s) of this approval.

3.3 All payments or bonds required to be made to the Council pursuant to any condition of this approval must be made prior to commencement of the use and at the rate applicable at the time of payment.

3.4 All works must be designed, constructed and carried out in accordance with FNQROC Development Manual requirements (as amended) and to the satisfaction of Council's delegated officer.

3.5 Noise Nuisance

Refrigeration equipment, pumps, compressors and mechanical ventilation systems must be located, designed, installed and maintained to achieve a maximum noise level of 3dB(A) above background levels as measured from noise sensitive locations.

The applicant is required to install and maintain suitable screening to all air conditioning, lift motor rooms, plant and service facilities located at the top of or on the external face of the building. The screening structures must be constructed from materials that are consistent with materials used elsewhere on the facade of the building. There are to be no individual external unscreened air conditioning units attached to the exterior building facade.

3.6 Waste Management

On site refuse storage areas must be provided and be screened from view from adjoining properties, road reserve and the shared access driveway by 1 metre wide landscaped screening buffer, 1.8m high solid fence or building.

3.7 Letterbox

Each unit is to be provided with an individual letter box.

3.8 Clothes Drying area

Sufficient area for clothes drying is to be provided in addition to the open space requirements of the units and is to be appropriately screened from view of adjoining properties and Constance Street.

4. Infrastructure Services and Standards

4.1 Access

Two individual access crossovers must be constructed (from the edge of the road pavement to the property boundary of the subject lot) to service the two units in accordance with FNQROC Development Manual Standards, to the satisfaction of Council's delegated officer.

The applicant/developer is to make a single application for driveway access onto a Council road. The application is to be accompanied by the relevant fee and will be required to certify or be assessed for compliance by Council's delegated officer.

4.2 Stormwater Drainage/Water Quality

4.2.1 The applicant/developer must take all necessary steps to ensure a non-worsening effect on surrounding land as a consequence of the development.

4.2.2 All stormwater drainage must be collected from site and discharged to an approved legal point of discharge.

4.3 Car Parking/Internal Driveways

The applicant/developer must ensure the development is provided with 2 undercover car parking spaces (1 per unit) and 1 visitor parking space (covered or uncovered), which are available solely for the parking of vehicles associated with the use of the premises.

All car parking spaces and internal driveways must be concrete sealed and appropriately drained prior to the commencement of the use and to the satisfaction of Council's delegated officer.

4.4 Landscaping & Fencing

4.4.1 Prior to the commencement of the use, a landscape plan must be submitted to Council for review and approval. The landscape plan must include, at minimum, a 1.5m wide landscape strip along the entire frontage of Lot 2 (excluding access driveways), and include plant species selected from the Plant Schedule in the Planning Scheme Policy 6 - Landscaping and preferred plant species.

All landscaped areas must be mulched, irrigated and maintained for the life of the development, to the satisfaction of Council's delegated officer.

4.4.2 Prior to the commencement of the use, solid 1.8 metre high timber paling (no gaps) or 1.8 metre high colorbond fencing (of neutral colour) is to be erected along the entire length of the sites northern, southern and western boundaries, and between the party wall and western boundary of the site to separate each unit's area of private open space.

The abovementioned fencing is to be erected and maintained in good order for the life of the development, to the satisfaction of Council's delegated officer.

4.5 Lighting

Where outdoor lighting is required the developer shall locate, design and install lighting to operate from dusk to dawn within all areas where the public will be given access, which prevents the potential for light spillage to cause nuisance to neighbours and must be provided in accordance with Australian Standard 1158.1 – Lighting for Roads and Public Spaces.

Illumination resulting from direct, reflected or other incidental light emanating from the subject land does not exceed 8 lux when measured at any point 1.5m outside the property boundary of the subject site. The lighting fixtures installed on site must meet appropriate lux levels as documented within Australian Standard 4282 – Control of the Obtrusive Effects of Outdoor Lighting.

4.6 Water Supply

Where the existing reticulated water supply does not currently service the site or is not at an adequate capacity, the developer is required to extend or upgrade the reticulated water supply infrastructure to connect the site to Council's existing infrastructure at a point that has sufficient capacity to service the development in accordance with FNQROC Development Manual standards (as amended).

If a new or upgraded water service connection is required to service the development, it must be provided in accordance with FNQROC Development Manual standards (as amended) to the satisfaction of Council's delegated officer.

Each unit is required to be **separately metered**.

4.7 Sewerage Connection

The developer must connect the proposed development to Council's reticulated sewerage system in accordance with FNQROC Development Manual standards (as amended) to the satisfaction of Council's delegated officer.

Where sewerage connections are not available to the site, or where existing connections are not satisfactory for the proposed development, the developer is required to extend or upgrade the reticulated sewerage infrastructure to connect the site to Council's existing infrastructure at a point that has sufficient capacity to service the development in accordance with FNQROC Development Manual standards (as amended).

REFERRAL AGENCIES

Not Applicable.

APPROVED PLANS

The following plans are Approved plans for the development:

Plan/Document Number	Plan/Document Title	Prepared by	Dated
1682-A-01	Site Plan	HUMAC Design	-
1682-A-02	Floor Plan	HUMAC Design	-
1682-A-03	Elevations	HUMAC Design	-

ADVISORY NOTES

The following notes are included for guidance and information purposes only and do not form part of the assessment manager conditions:

(A) ASSESSMENT MANAGER'S ADVICE

- (a) An Adopted Infrastructure Charges Notice has been issued with respect to the approved development. The Adopted Infrastructure Charges Notice details the type of infrastructure charge/s, the amount of the charge/s and when the charge/s are payable.
- (b) The Adopted Infrastructure Charges Notice does not include all charges or payments that are payable with respect to the approved development. A number of other charges or payments may be payable as conditions of approval. The applicable fee is set out in Council's Fees & Charges Schedule for each respective financial year.
- (c) Water Meters/Water Service Connection

Prior to the water service connection works commencing, a Water Quotation, Connection, Disconnection Request must be lodged with Council. The cost of the required water connection will be determined based upon the assessment of the Water Quotation Request. The Water Quotation Request must be lodged and the required connection fee paid prior to the signing of the survey plan.
- (d) Property Connection to existing sewer main (house connection branch installation)

Prior to the property connection to the existing sewer main commencing, a request for a Property Connection Quotation must be lodged with Council. The cost of the required property connection will be determined based upon the assessment of the Property Connection Quotation Request. The Property Connection Quotation Request must be lodged and the required connection fee paid prior to the signing of the survey plan.

(e) Endorsement Fees

Council charges a fee for the endorsement of a Survey Plan, Community Management Statements, easement documents, and covenants. The fee is set out in Council's Fees & Charges Schedule applicable for each respective financial year.

(f) Compliance with applicable codes/policies

The development must be carried out to ensure compliance with the provisions of Council's Local Laws, Planning Scheme Policies, Planning Scheme and Planning Scheme Codes to the extent they have not been varied by a condition of this approval.

(g) Environmental Protection and Biodiversity Conservation Act 1999

The applicant is advised that referral may be required under the *Environmental Protection and Biodiversity Conservation Act 1999* if the proposed activities are likely to have a significant impact on a matter of national environmental significance. Further information on these matters can be obtained from www.environment.gov.au

(h) Cultural Heritage

In carrying out the activity the applicant must take all reasonable and practicable measures to ensure that no harm is done to Aboriginal cultural heritage (the "cultural heritage duty of care"). The applicant will comply with the cultural heritage duty of care if the applicant acts in accordance with gazetted cultural heritage duty of care guidelines. An assessment of the proposed activity against the duty of care guidelines will determine whether or to what extent Aboriginal cultural heritage may be harmed by the activity. Further information on cultural heritage, together with a copy of the duty of care guidelines and cultural heritage search forms, may be obtained from www.datsip.qld.gov.au

FURTHER DEVELOPMENT PERMITS REQUIRED

- Development Permit for Building Work
- Compliance Permit for Plumbing and Drainage Work
- Access approval arising from condition number 4.1 (Please contact Planning Section to obtain application form and applicable fee)

SUBMISSIONS

Not Applicable.

RIGHTS OF APPEAL

You are entitled to appeal against this decision. A copy of the relevant appeal provisions from the *Planning Act 2016* is attached.

During the appeal period, you as the applicant may suspend your appeal period and make written representations to council about the conditions contained within the development approval. If council agrees or agrees in part with the representations, a "negotiated decision notice" will be issued. Only one "negotiated decision notice" may be given. Taking this step will defer your appeal period, which will commence again from the start the day after you receive a "negotiated decision notice".

OTHER DETAILS

If you wish to obtain more information about Council's decision, electronic copies are available on line at www.msc.qld.gov.au, or at Council Offices.

Yours faithfully



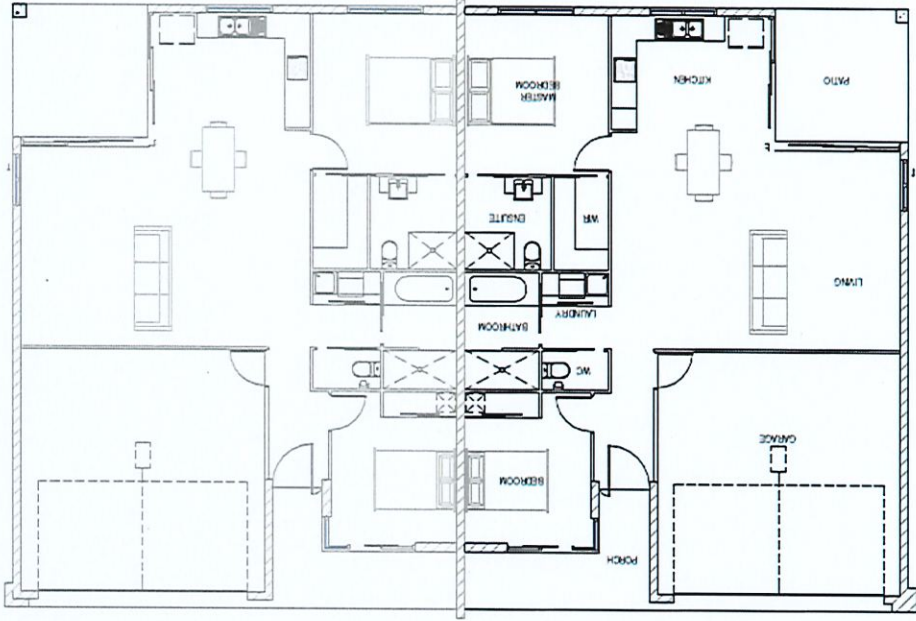
BRIAN MILLARD
SENIOR PLANNER

Enc: Approved Plans/Documents
Appeal Rights
Adopted Infrastructure Charge Notice

Project Set ID: 4147913
Version: 1, Version Date: 04/17/2022

ESIGN WIND CLASSIFICATION C2	
FLOOR AREA	
ROOM NAME	AREA (m ²)
F101	154.1 m ²
F102	154.1 m ²
308.2 m ²	

FLOOR PLAN
SCALE 1:100



PRELIMINARY ONLY

HUMAC DESIGN
HUMAC DESIGN | PO BOX 2727, CANBERRA Q.C. 2609
P: 07 4031 7057 | F: 05 6951
www.humacdesign.com.au | info@humacdesign.com.au | 07 4031 7057

Drawn By: SH
Checked By: SR
Scale: 1:100 AT A3
Sheet No.: 1682-A-02
Revision:

Project: PROPOSED DUPLEX
19 HERBERTON STREET, MAREEBA
Client Name: SIMON MIFSID
Drawing Title: FLOOR PLAN

THE DRAWING CONTRACTOR SHALL RETAIN THE PROPERTY OF HUMAC DESIGN UNLESS OTHERWISE STATED IN WRITING. HUMAC DESIGN DOES NOT ACCEPT LIABILITY FOR ANY DAMAGE TO OR LOSS OF ANYTHING CAUSED BY THE USE OF THIS DRAWING. THE CONTRACTOR SHALL BE RESPONSIBLE FOR OBTAINING ALL NECESSARY PERMITS AND APPROVALS FROM THE RELEVANT AUTHORITIES. THE CONTRACTOR SHALL BE RESPONSIBLE FOR THE PERFORMANCE OF THE DESIGN AND FOR THE PROVISION OF ALL MATERIALS AND SERVICES. THE CONTRACTOR SHALL BE RESPONSIBLE FOR THE PROVISION OF ALL MATERIALS AND SERVICES. THE CONTRACTOR SHALL BE RESPONSIBLE FOR THE PROVISION OF ALL MATERIALS AND SERVICES.

REVISIONS	DATE

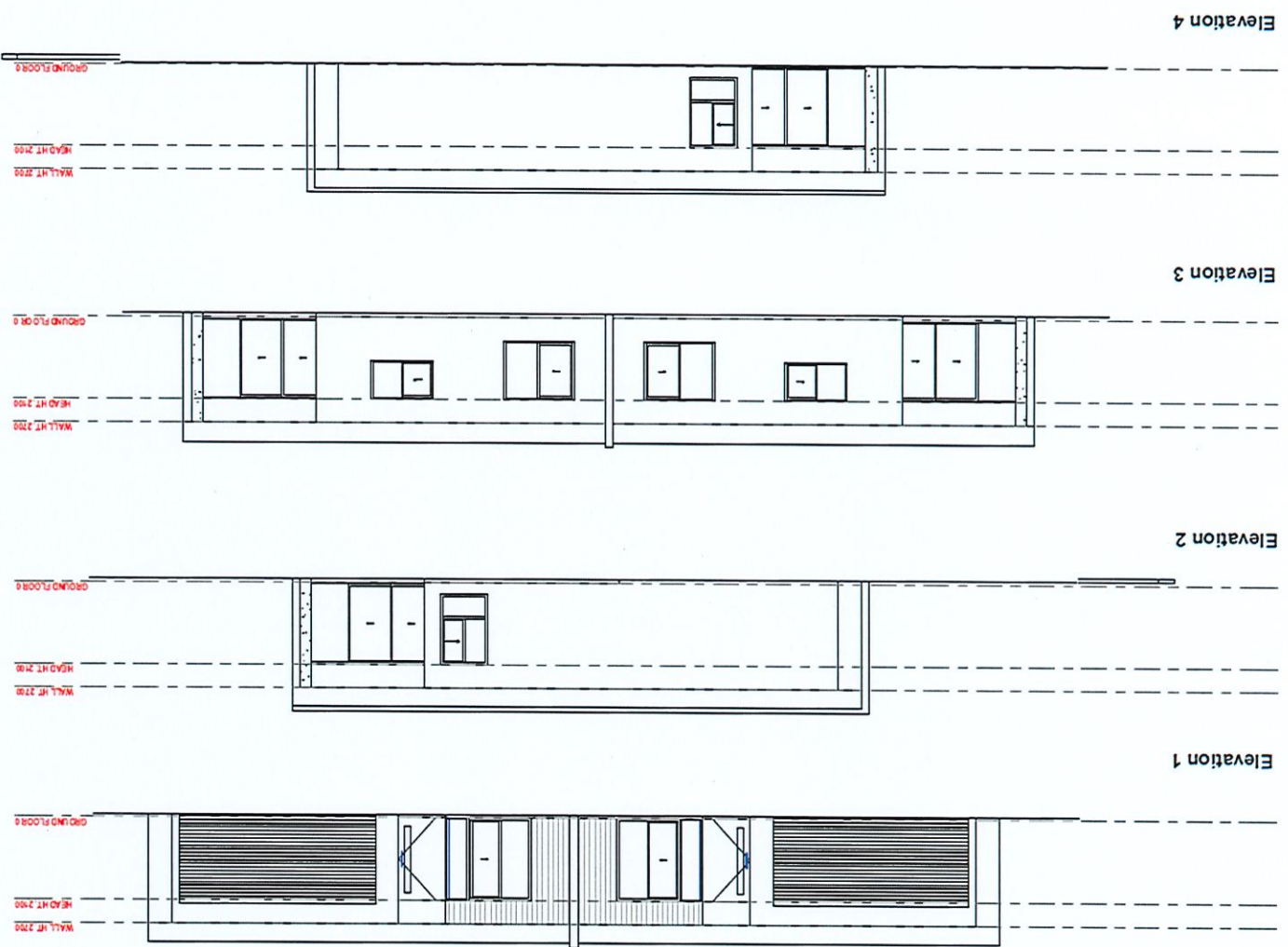
SCALE 1:100 AT ORIGINAL SIZE
0 1000 2000 3000mm

ELEVATION KEY

C:\Users\Sharon\OneDrive - Humac Design\01 - Humac Design\Jobs\1682\06 - WDI\1682 - Mifsid - Constance St.wrt 26/09/2022 2:04:53 PM

9/11/2022
B. Mifsid

Document Set ID: 4147913
Version: 1, Version Date: 04/10/2022



DESIGN WIND CLASSIFICATION C2

PRELIMINARY ONLY

Revision:	
Drawn By: SH	Checked By: SH
Scale: 1:100 AT A3	Sheet No.: 1682-A-03
<p>HUMAC DESIGN PO BOX 5272, CHINA GARDEN P 07 431 7057 F 07 431 6651 h@humacdesign.com.au www.humacdesign.com.au</p>	
Client Name:	SIMON MRS SUD
Project:	PROPOSED DUPLEX 19 HERBERTON STREET, MAREEBA
Drawing Title:	ELEVATIONS
DATE	
REVISIONS	



C:\Users\Sharon\OneDrive - Humac\Desktop\1682\1682 - WIND - Mareeba - Constance St.rvt 26/03/2022 9:04:53 PM

9/11/2022
B. W. [Signature]

Appeal Rights

PLANNING ACT 2016 & THE PLANNING REGULATION 2017

Chapter 6 Dispute resolution

Part 1 Appeal rights

229 Appeals to tribunal or P&E Court

- (1) Schedule 1 of the *Planning Act 2016* states –
- (a) Matters that may be appealed to –
 - (i) either a tribunal or the P&E Court; or
 - (ii) only a tribunal; or
 - (iii) only the P&E Court; and
 - (b) The person-
 - (i) who may appeal a matter (**the appellant**); and
 - (ii) who is a respondent in an appeal of the matter; and
 - (iii) who is a co-respondent in an appeal of the matter; and
 - (iv) who may elect to be a co-respondent in an appeal of the matter.

(Refer to Schedule 1 of the Planning Act 2016)

- (2) An appellant may start an appeal within the appeal period.
- (3) The **appeal period** is –
- (a) for an appeal by a building advisory agency – 10 business days after a decision notice for the decision is given to the agency; or
 - (b) for an appeal against a deemed refusal – at any time after the deemed refusal happens; or
 - (c) for an appeal against a decision of the Minister, under chapter 7, part 4, to register premises or to renew the registration of premises – 20 business days after a notice is published under section 269(3)(a) or (4); or
 - (d) for an appeal against an infrastructure charges notice – 20 business days after the infrastructure charges notice is given to the person; or
 - (e) for an appeal about a deemed approval of a development application for which a decision notice has not been given – 30 business days after the applicant gives the deemed approval notice to the assessment manager; or
 - (f) for any other appeal – 20 business days after a notice of the decision for the matter, including an enforcement notice, is given to the person.

Note –

See the P&E Court Act for the court's power to extend the appeal period.

- (4) Each respondent and co-respondent for an appeal may be heard in the appeal.
- (5) If an appeal is only about a referral agency's response, the assessment manager may apply to the tribunal or P&E Court to withdraw from the appeal.

-
- (6) To remove any doubt. It is declared that an appeal against an infrastructure charges notice must not be about-
- (a) the adopted charge itself; or
 - (b) for a decision about an offset or refund-
 - (i) the establishment cost of trunk infrastructure identified in a LGIP; or
 - (ii) the cost of infrastructure decided using the method included in the local government's charges resolution.

230 Notice of appeal

- (1) An appellant starts an appeal by lodging, with the registrar of the tribunal or P&E Court, a notice of appeal that-
 - (a) is in the approved form; and
 - (b) succinctly states the grounds of the appeal.
- (2) The notice of appeal must be accompanied by the required fee.
- (3) The appellant or, for an appeal to a tribunal, the registrar must, within the service period, give a copy of the notice of appeal to –
 - (a) the respondent for the appeal ; and
 - (b) each co-respondent for the appeal; and
 - (c) for an appeal about a development application under schedule 1, table 1, item 1 – each principal submitter for the development application; and
 - (d) for and appeal about a change application under schedule 1, table 1, item 2 – each principal submitter for the change application; and
 - (e) each person who may elect to become a co-respondent for the appeal, other than an eligible submitter who is not a principal submitter in an appeal under paragraph (c) or (d); and
 - (f) for an appeal to the P&E Court – the chief executive; and
 - (g) for an appeal to a tribunal under another Act – any other person who the registrar considers appropriate.
- (4) The *service period* is –
 - (a) if a submitter or advice agency started the appeal in the P&E Court – 2 business days after the appeal has started; or
 - (b) otherwise – 10 business days after the appeal is started.
- (5) A notice of appeal given to a person who may elect to be a co-respondent must state the effect of subsection (6).
- (6) A person elects to be a co-respondent by filing a notice of election, in the approved form, within 10 business days after the notice of appeal is given to the person.

231 Other appeals

- (1) Subject to this chapter, schedule 1 and the P&E Court Act, unless the Supreme Court decides a decision or other matter under this Act is affected by jurisdictional error, the decision or matter is non-appealable.
- (2) The *Judicial Review Act 1991*, part 5 applies to the decision or matter to the extent it is affected by jurisdictional error.
- (3) A person who, but for subsection (1) could have made an application under the *Judicial Review Act 1991* in relation to the decision or matter, may apply under part 4 of that Act for a statement of reasons in relation to the decision or matter.
- (4) In this section –

decision includes-

- (a) conduct engaged in for the purpose of making a decision; and
- (b) other conduct that relates to the making of a decision; and
- (c) the making of a decision or failure to make a decision; and
- (d) a purported decision ; and
- (e) a deemed refusal.

non-appealable, for a decision or matter, means the decision or matter-

- (a) is final and conclusive; and
- (b) may not be challenged, appealed against, reviewed, quashed, set aside or called into question in any other way under the Judicial Review Act 1991 or otherwise, whether by the Supreme Court, another court, a tribunal or another entity; and
- (c) is not subject to any declaratory, injunctive or other order of the Supreme Court, another court, a tribunal or another entity on any ground.

232 Rules of the P&E Court

- (1) A person who is appealing to the P&E Court must comply with the rules of the court that apply to the appeal.
- (2) However, the P&E Court may hear and decide an appeal even if the person has not complied with the rules of the P&E Court.